

LSA-PLUS® HD180 10-pair Connection Module for Back Mount Frame mounting

Product Classification

Regional Availability	EMEA
Product Type	Connection module
Product Brand	LSA-PLUS®
Product Series	LSA-PLUS HD180

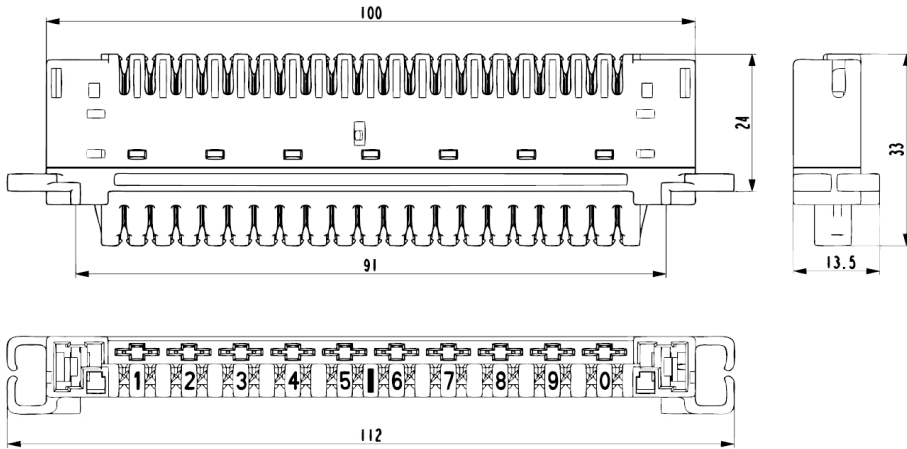
General Specifications

ANSI/TIA Category	3
Color	Gray
Mounting	Backmount frames
Pairs, quantity	10
Termination Tool	LSA-PLUS Punchdown tool
Termination Type	IDC

Dimensions

Width	112 mm 4.409 in
--------------	-------------------

Outline Drawing



Electrical Specifications

Contact Resistance, maximum 3 mOhm

Material Specifications

Contact Plating Material Silver

Material Type Polybutylene terephthalate (PBT)

Environmental Specifications

Environmental Space Indoor | Outdoor

Flammability Rating UL 94 V-0

Packaging and Weights

Packaging quantity 1

Regulatory Compliance/Certifications

Agency	Classification
CHINA-ROHS	Below maximum concentration value
REACH-SVHC	Compliant as per SVHC revision on www.commscope.com/ProductCompliance
ROHS	Compliant
UK-ROHS	Compliant



