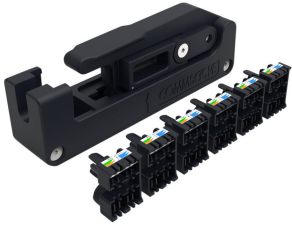


760248857



Jack Termination Tool (SL / KJ / UNJ)

Product Classification

Regional Availability	Asia EMEA North America
Portfolio	CommScope®
Product Type	Modular jack tooling

General Specifications

Application	For use with KJ Series outlets For use with M Series outlets For use with SL Series outlets
Color	Black

Environmental Specifications

Environmental Space	Indoor
----------------------------	--------

Packaging and Weights

Packaging quantity	1
Packaging Type	Carton Clam shell

Regulatory Compliance/Certifications

Agency	Classification
CHINA-ROHS	Below maximum concentration value
REACH-SVHC	Compliant as per SVHC revision on www.commscope.com/ProductCompliance
ROHS	Compliant
UK-ROHS	Compliant

