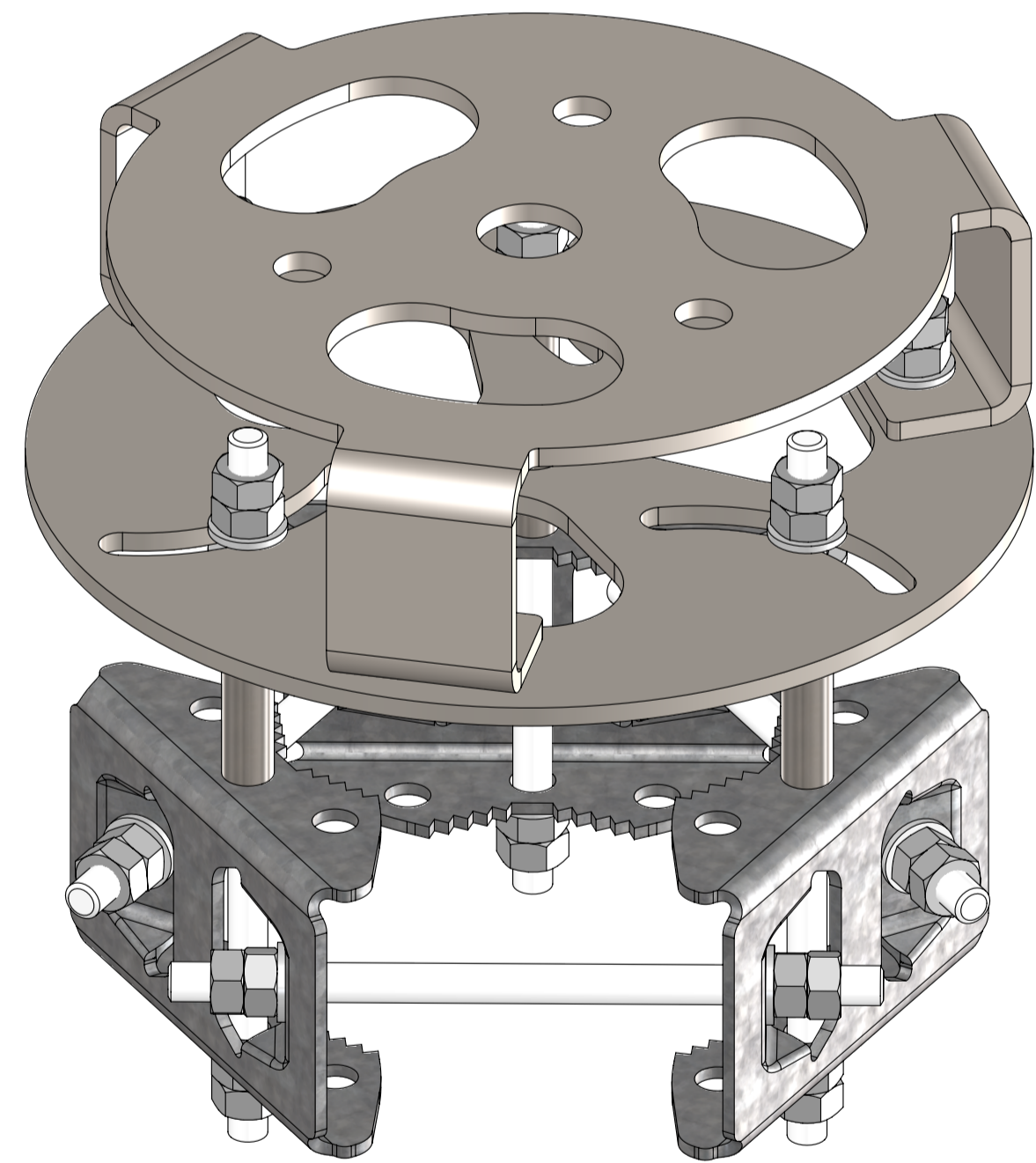


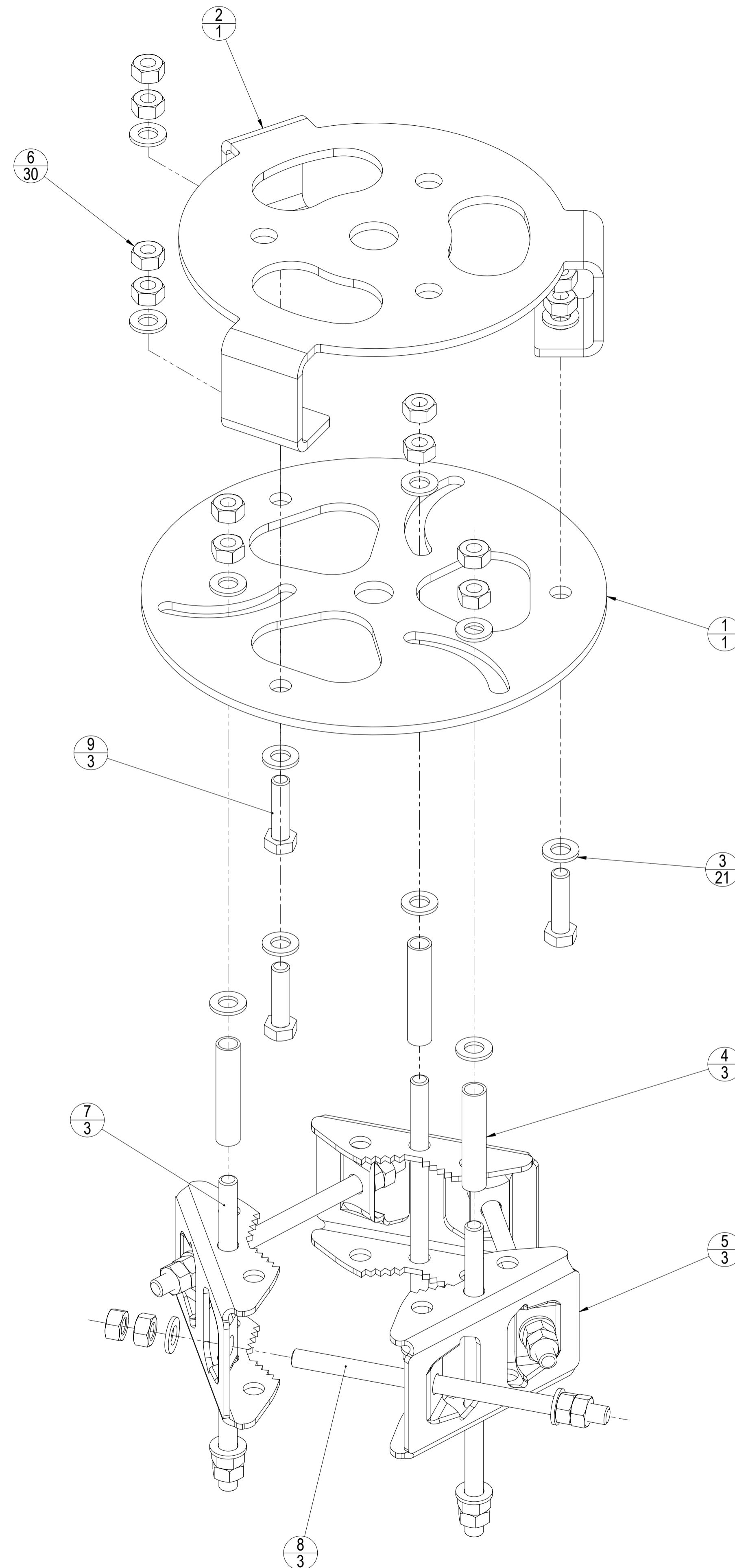
NOTES:

1. ALL DIMENSIONS ARE IN INCHES (MILLIMETERS).

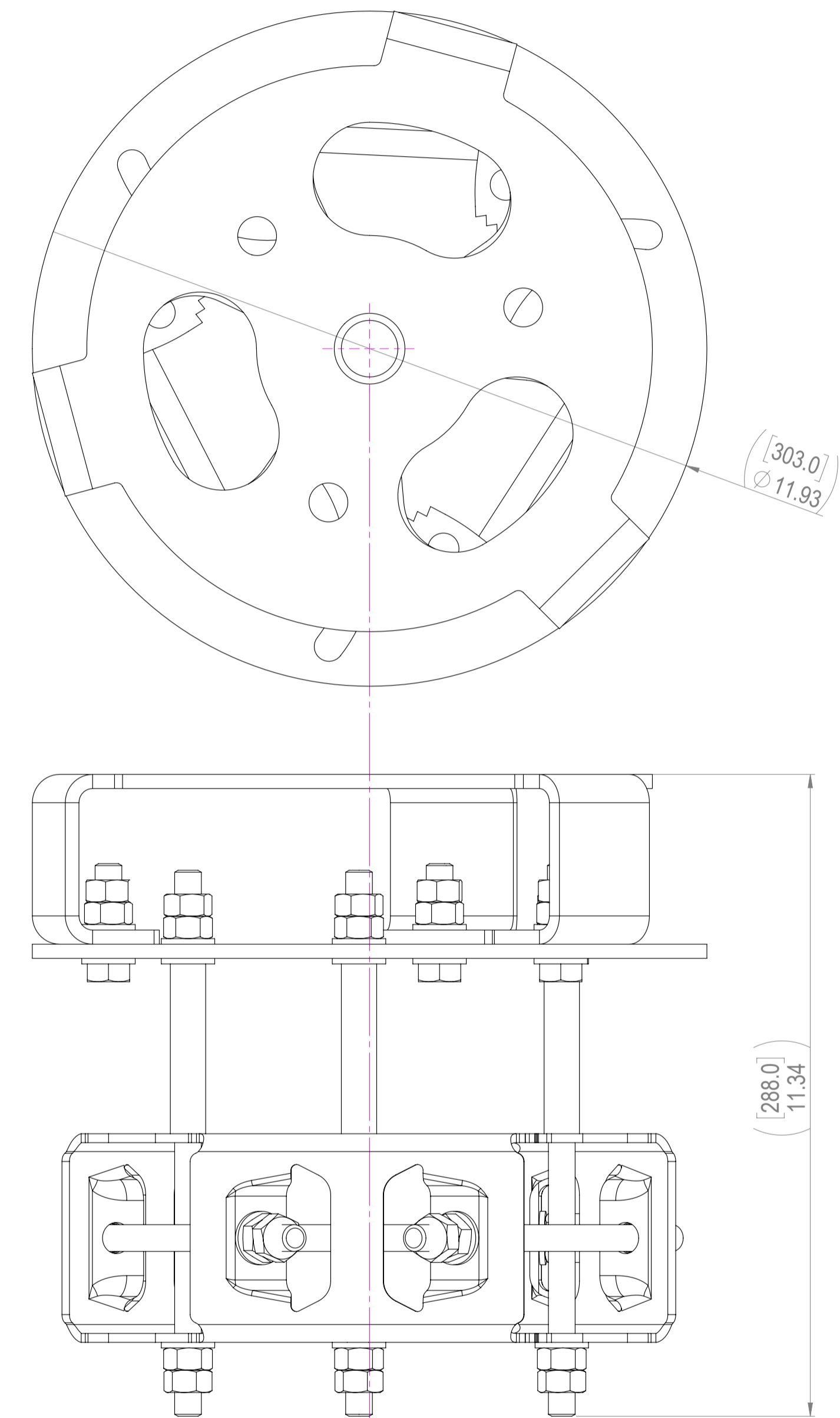
| REV. | ECN        | DESCRIPTION     | BY  | DATE        |
|------|------------|-----------------|-----|-------------|
| A    | 8000031061 | INITIAL RELEASE | WJW | 06-AUG-2018 |



**POLE TOP MOUNTING KIT - SHOWN FULLY ASSEMBLED**



**POLE TOP MOUNTING KIT - EXPLODED VIEW**



| ITEM NO. | PART NUMBER | DESCRIPTION                         | QTY |
|----------|-------------|-------------------------------------|-----|
| 1        | 860644741   | MC TOP MOUNTING PLATE               | 1   |
| 2        | 860644742   | ANTENNA MOUNT BRACKET, TRIPOD       | 1   |
| 3        | 100521-47   | WSHR,FLAT,M12,13X28X2.5,STL,GALV    | 21  |
| 4        | 600679-4    | SPACER TUBE                         | 3   |
| 5        | 626852-1    | PIPE CLAMP BRACKET,150X93.6X52MM    | 3   |
| 6        | 100526-45   | NUTS,HEX,M12,STL,GALV               | 30  |
| 7        | 100555-81   | STUD,THREADED,M12-1.75,245,STL,GALV | 3   |
| 8        | 100555-82   | STUD,THREADED,M12-1.75,215,STL,GALV | 3   |
| 9        | 100534-265  | SCR,HCS,HEX,M12X45,STL,GALV         | 3   |

| COMMSCOPE, INC. OF NORTH CAROLINA |                   |                     |  |
|-----------------------------------|-------------------|---------------------|--|
| TOLERANCES                        |                   | SAP MATERIAL MASTER |  |
| 0 PLACE X ±                       | 2 PLACE XX ±      | 860636779-1         |  |
| 1 PLACE X ±                       | ANGLES ±          |                     |  |
| FINISH                            | MATERIAL          |                     |  |
| N/A                               | SEE BOM           |                     |  |
| CE                                | WJW               | 07/23/2018          | TITLE                                  |
| RW                                | KM1068            | 08/29/2018          | POLE TOP MTG KIT, 3.5" - 6" METAL POLE |
| RV                                |                   |                     |  |
| AD                                | RD1048            | 10/05/2018          |  |
| RE                                | RD1048            | 10/05/2018          |  |
| ECN                               | 000007038412      |                     | SCALE                                  |
|                                   |                   |                     | 1:2                                    |
|                                   |                   |                     | DOCUMENT NO.                           |
|                                   |                   |                     | 860636779-1                            |
| DENSITY                           | g/mm <sup>3</sup> | SIZE                | WORK AREA                              |
| MASS                              | grams             | A1                  | 24                                     |
| VOLUME                            | mm <sup>3</sup>   | VERSION             | 00                                     |
| SURFACE AREA                      | mm <sup>2</sup>   | STATUS              | RE                                     |
| HEIGHT                            |                   | REVISION            | A                                      |
| LENGTH                            |                   | VERSION             | 00                                     |
| WIDTH                             |                   | STATUS              | RE                                     |
|                                   |                   | REVISION            | A                                      |
|                                   |                   | SHEET               | 1 OF 1                                 |