

# 2UPX210B-T2



4-port multibeam antenna, 4x 694–896 MHz, 2x 37° HPBW, 2x RET with manual override.

- Integrated Internal Remote Electrical Tilt (RET), with independent control of electrical tilt with manual override on both beams
- Each port has an integrated bias tee, and each beam has its own smart switch that automatically selects between bias tee or AISG inputs according to a predetermined priority table
- Single panel design supporting two separate beams perfectly optimized at horizontal pointing angles of +27 degrees and –27 degrees from boresight

## General Specifications

<b>Antenna Type</b>	Multibeam
<b>Band</b>	Single band
<b>Grounding Type</b>	RF connector body grounded to reflector and mounting bracket
<b>Performance Note</b>	Outdoor usage   Wind loading figures are validated by wind tunnel measurements described in white paper WP-112534-EN
<b>Radome Material</b>	Fiberglass, UV resistant
<b>Radiator Material</b>	Copper   Low loss circuit board
<b>Reflector Material</b>	Aluminum
<b>RF Connector Interface</b>	7-16 DIN Female
<b>RF Connector Location</b>	Bottom
<b>RF Connector Quantity, low band</b>	4
<b>RF Connector Quantity, total</b>	4

## Remote Electrical Tilt (RET) Information

<b>RET Interface</b>	8-pin DIN Female   8-pin DIN Male
<b>RET Interface, quantity</b>	1 female   2 male
<b>Input Voltage</b>	10–30 Vdc
<b>Internal Bias Tee</b>	Port 1   Port 2   Port 3   Port 4
<b>Internal RET</b>	Low band (2)
<b>Power Consumption, idle state, maximum</b>	2 W
<b>Power Consumption, normal conditions, maximum</b>	13 W
<b>Protocol</b>	3GPP/AISG 2.0 (Single RET)

# 2UPX210B-T2

## Dimensions

<b>Width</b>	640 mm   25.197 in
<b>Depth</b>	235 mm   9.252 in
<b>Length</b>	2533 mm   99.724 in
<b>Net Weight, without mounting kit</b>	47 kg   103.617 lb

## Electrical Specifications

<b>Impedance</b>	50 ohm
<b>Operating Frequency Band</b>	694 – 896 MHz
<b>Polarization</b>	±45°
<b>Total Input Power, maximum</b>	700 W @ 50 °C

## Electrical Specifications

<b>Frequency Band, MHz</b>	<b>694–806</b>	<b>806–896</b>
<b>Gain, dBi</b>	17.9	18.7
<b>Beam Centers, Horizontal, degrees</b>	±27	±27
<b>Beamwidth, Horizontal, degrees</b>	39	36
<b>Beamwidth, Vertical, degrees</b>	9.6	8.4
<b>Beam Tilt, degrees</b>	0–10	0–10
<b>USLS (First Lobe), dB</b>	21	21
<b>Front-to-Back Ratio at 180°, dB</b>	34	40
<b>Isolation, Cross Polarization, dB</b>	25	25
<b>Isolation, Inter-band, dB</b>	18	18
<b>VSWR   Return loss, dB</b>	1.43   15.0	1.43   15.0
<b>PIM, 3rd Order, 2 x 20 W, dBc</b>	-150	-150
<b>Input Power per Port at 50°C, maximum, watts</b>	200	200

## Electrical Specifications, BASTA

<b>Frequency Band, MHz</b>	<b>694–806</b>	<b>806–896</b>
<b>Gain by all Beam Tilts, average, dBi</b>	17.6	18.5
<b>Gain by all Beam Tilts Tolerance, dB</b>	±0.6	±0.3
<b>Gain by Beam Tilt, average, dBi</b>	0°   17.6 5°   17.6 10°   17.6	0°   18.5 5°   18.5 10°   18.4
<b>Beamwidth, Horizontal Tolerance, degrees</b>	±1.8	±1.6
<b>Beamwidth, Vertical Tolerance, degrees</b>	±0.7	±0.4

# 2UPX210B-T2

---

<b>USLS, beampeak to 20° above beampeak, dB</b>	21	19
<b>Front-to-Back Total Power at 180° ± 30°, dB</b>	25	29
<b>CPR at Boresight, dB</b>	20	19

## Mechanical Specifications

<b>Wind Loading @ Velocity, frontal</b>	1,102.0 N @ 150 km/h (247.7 lbf @ 150 km/h)
<b>Wind Loading @ Velocity, lateral</b>	372.0 N @ 150 km/h (83.6 lbf @ 150 km/h)
<b>Wind Loading @ Velocity, maximum</b>	1,497.0 N @ 150 km/h (336.5 lbf @ 150 km/h)
<b>Wind Loading @ Velocity, rear</b>	1,135.0 N @ 150 km/h (255.2 lbf @ 150 km/h)
<b>Wind Speed, maximum</b>	200 km/h (124 mph)

## Packaging and Weights

<b>Width, packed</b>	797 mm   31.378 in
<b>Depth, packed</b>	402 mm   15.827 in
<b>Length, packed</b>	2684 mm   105.669 in
<b>Weight, gross</b>	67 kg   147.71 lb

## Regulatory Compliance/Certifications

<b>Agency</b>	<b>Classification</b>
CHINA-ROHS	Above maximum concentration value
ISO 9001:2015	Designed, manufactured and/or distributed under this quality management system
ROHS	Compliant/Exempted
UK-ROHS	Compliant/Exempted



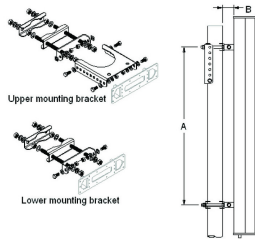
## Included Products

T-029-GL-E	-	Adjustable Tilt Pipe Mounting Kit for 2.362"-4.5" (60-115mm) OD round members for panel antennas. Includes 2 clamp sets.
------------	---	--

## \* Footnotes

<b>Performance Note</b>	Severe environmental conditions may degrade optimum performance
-------------------------	---

# T-029-GL-E



Adjustable Tilt Pipe Mounting Kit for 2.362"-4.5" (60-115mm) OD round members for panel antennas. Includes 2 clamp sets.

## Product Classification

**Product Type** Adjustable tilt mounting kit

## General Specifications

**Application** Outdoor

**Color** Silver

## Dimensions

**Compatible Length, maximum** 2850 mm | 112.205 in

**Compatible Length, minimum** 1500 mm | 59.055 in

**Compatible Diameter, maximum** 115 mm | 4.528 in

**Compatible Diameter, minimum** 60 mm | 2.362 in

**Antenna-to-Pipe Distance** 85 mm | 3.346 in

**Bracket-to-Bracket Distance** 1400 mm | 55.118 in

**Weight, net** 6 kg | 13.228 lb

## Material Specifications

**Material Type** Galvanized steel

## Mechanical Specifications

**Mechanical Tilt** 0°-8°

## Packaging and Weights

**Included** Brackets | Hardware

**Packaging quantity** 1

## Regulatory Compliance/Certifications

Agency	Classification
CE	Compliant with the relevant CE product directives

# T-029-GL-E

---

CHINA-ROHS	Below maximum concentration value
ISO 9001:2015	Designed, manufactured and/or distributed under this quality management system
REACH-SVHC	Compliant as per SVHC revision on <a href="http://www.commscope.com/ProductCompliance">www.commscope.com/ProductCompliance</a>
ROHS	Compliant
UK-ROHS	Compliant

