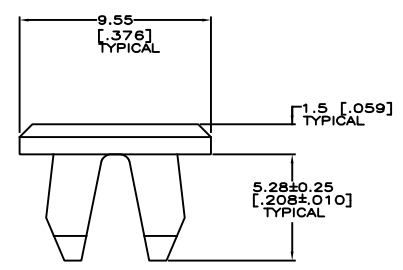
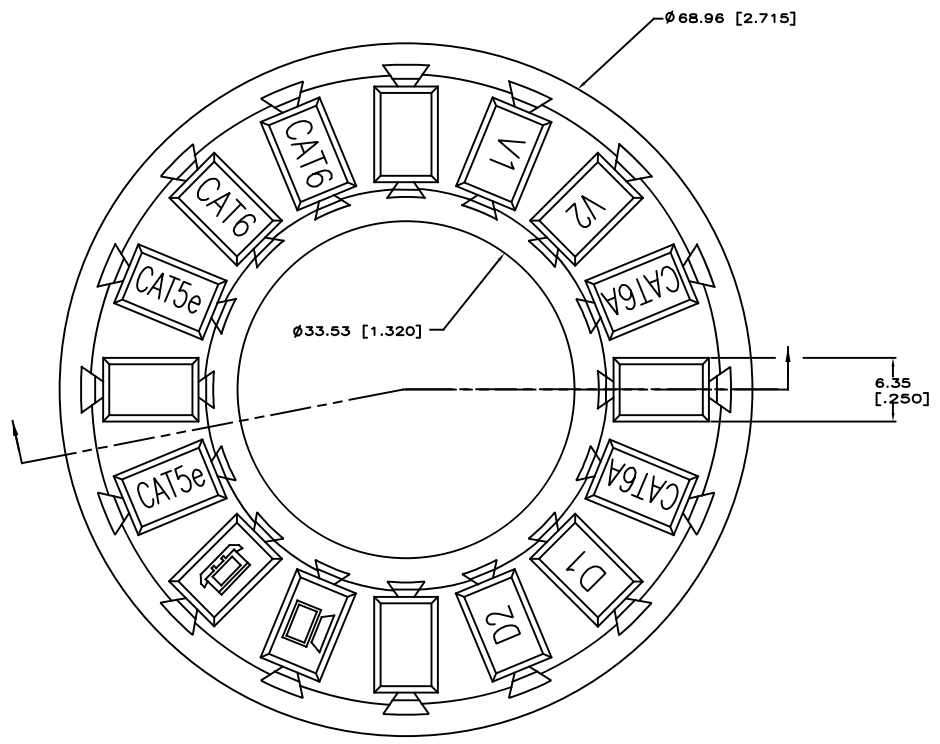


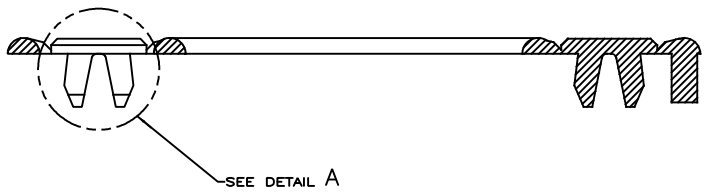
THIS DRAWING IS UNPUBLISHED
 500 Democracy, DC, Columbia

REV. NO.		REVISIONS			
DATE	BY	DESCRIPTION	DATE	BY	APP.
	HM	00			
E		REV EDO-11-C00219	18APR2011	LH	RA
F		REV ENL_CD_B0440	16MAY2017	GC	DC

- △ MATERIAL: POLYPHENYLENE OXIDE 94V-0 RATED. SEE TABLE FOR COLOR.
- △ MATERIAL: POLYCARBONATE MOLDING COMPOUND. SEE TABLE FOR COLOR.



DETAIL A
 SCALE 8:1



MATERIAL	COLOR	PART NO.
△ AQUA		1-1375092-5
BROWN		1-1375092-4
△ ALPINE WHITE		1-1375092-3
△ ROSE		1-1375092-2
△ ELECTRIC IVORY		1-1375092-1
NEMA GRAY		1-1375092-0
VIOLET		1375092-9
WHITE		1375092-8
ORANGE		1375092-7
△ BLACK		1375092-6
YELLOW		1375092-5
BLUE		1375092-4
GREEN		1375092-3
RED		1375092-2
LIGHT ALMOND		1375092-1

THIS DRAWING IS A CONTROLLED DOCUMENT. BY: G. GARRETT, DESIGNED; G. BOYMAN, CHECKED; G. BOYMAN, DRAWN.

DATE: 16MAY2017

APPLICATION SPEED: -

VERSION: -

DATE: 16MAY2017

CUSTOMER DRAWING

SCALE: 4:1

SHEET: 1 OF 1

REF: F

COMMSCOPE, INC.
 ICON WHEEL,
 VOICE, DATA, CATEGORY

SIZE: A1

CD: 1375092