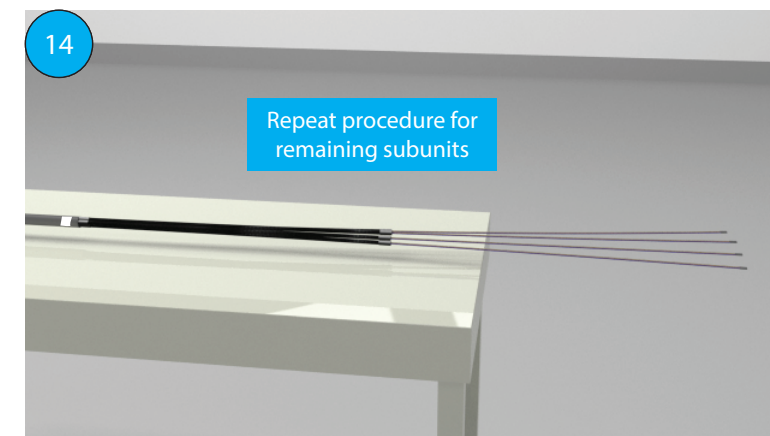
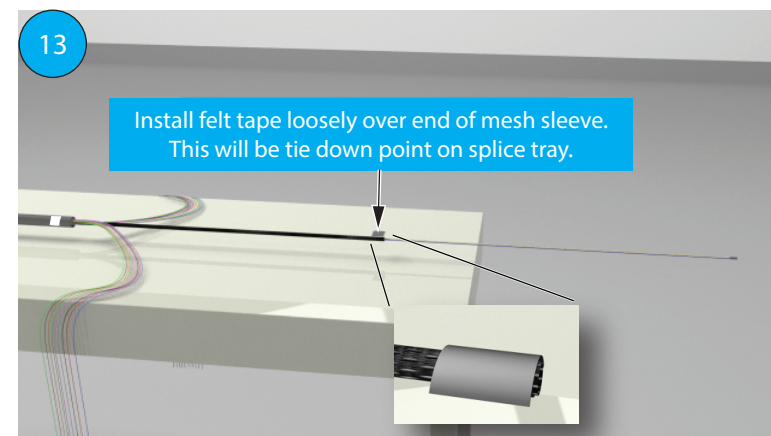
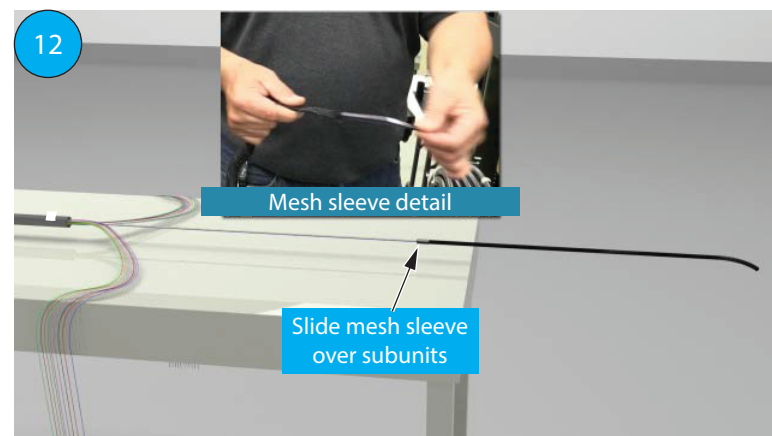
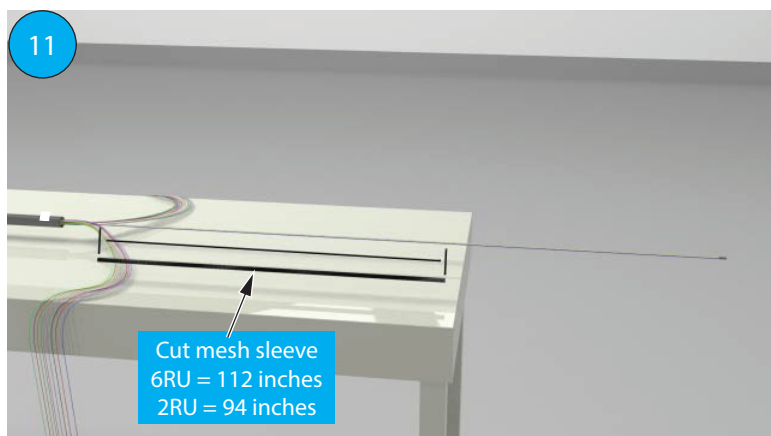
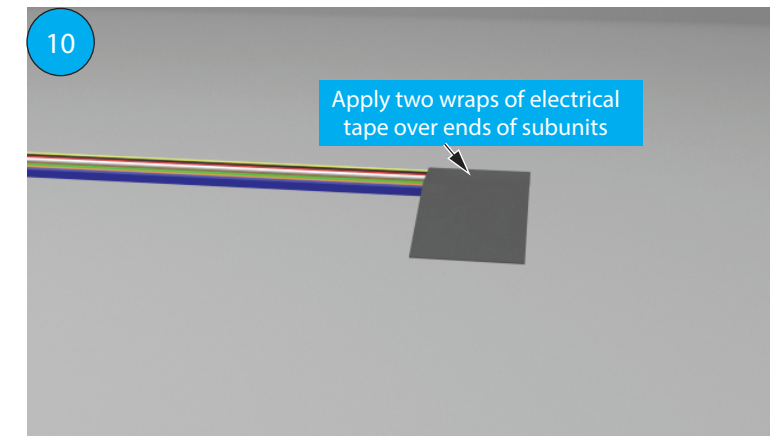
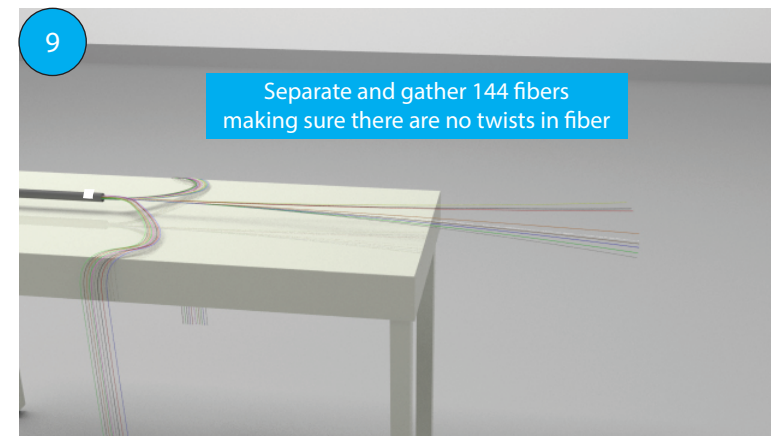
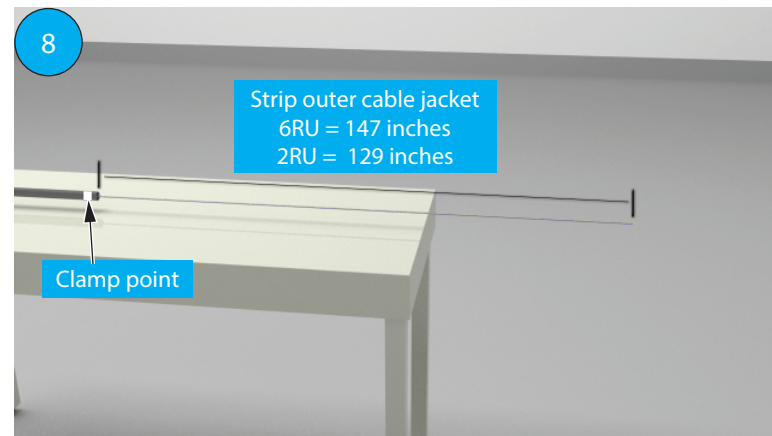
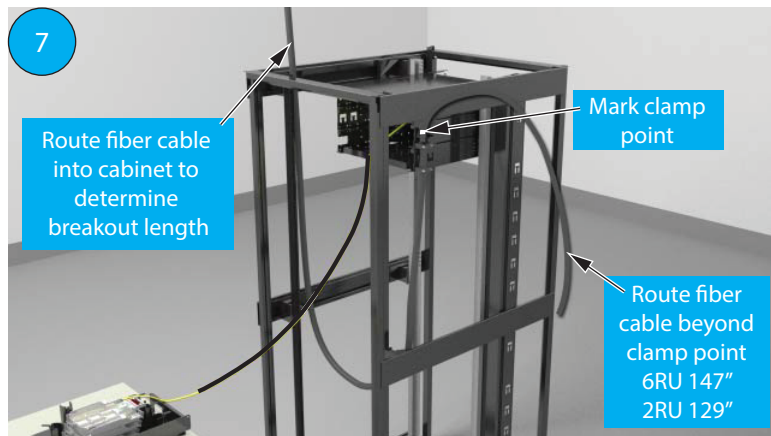
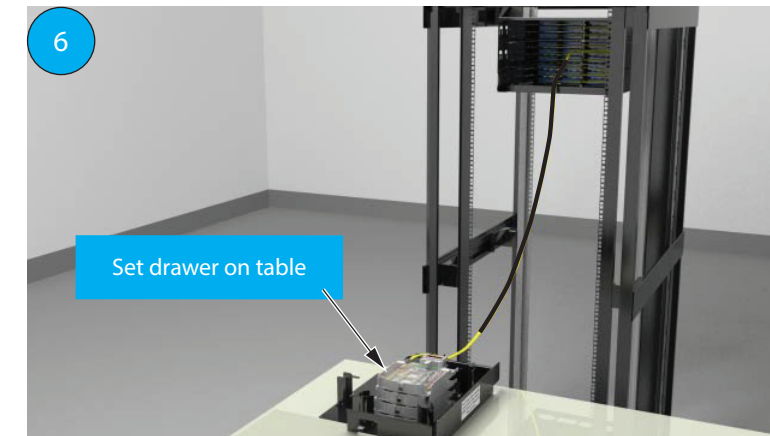
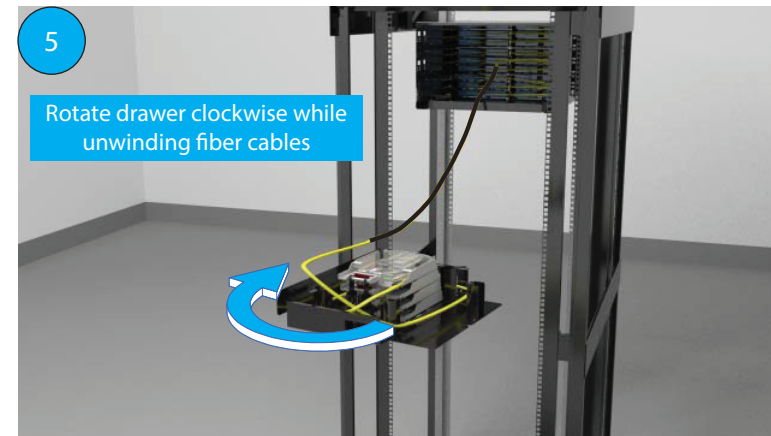
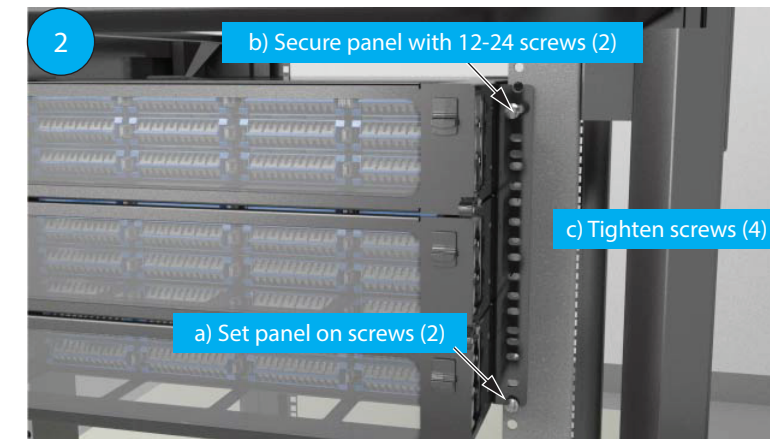
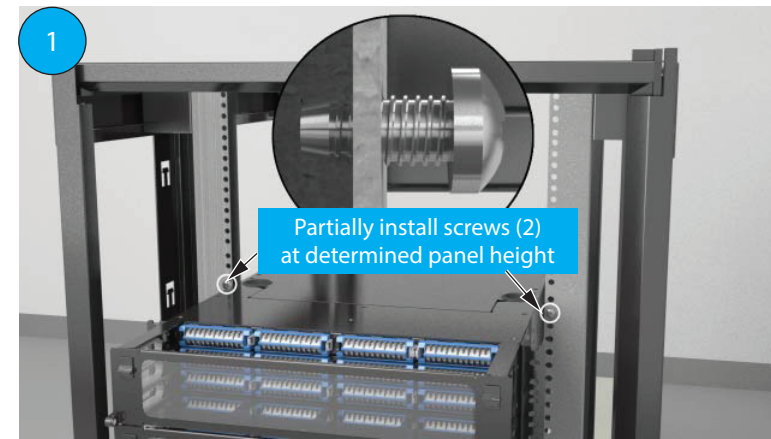


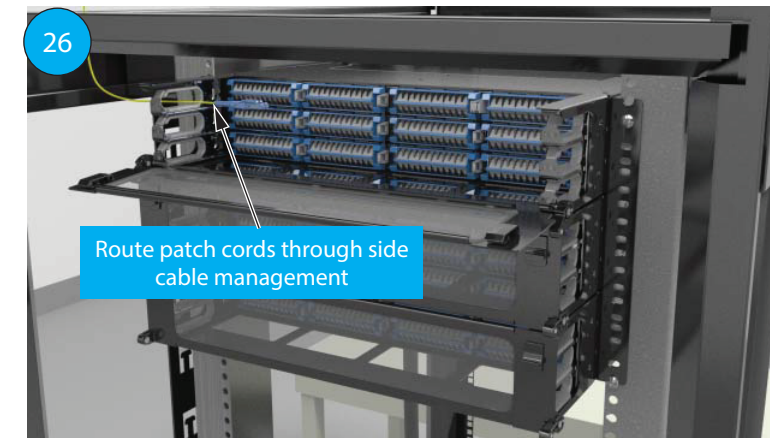
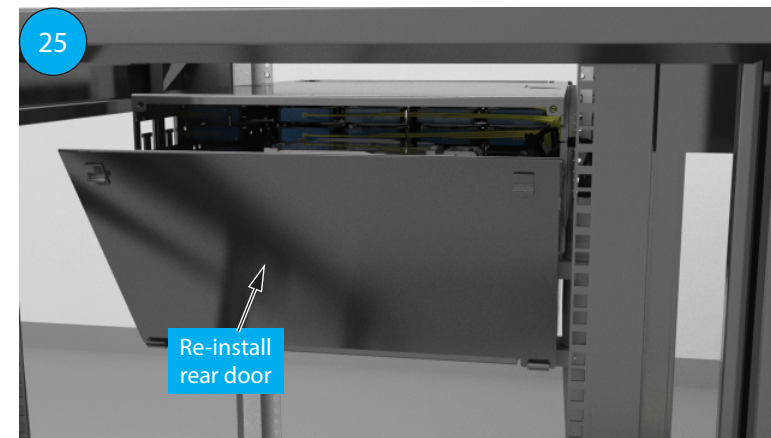
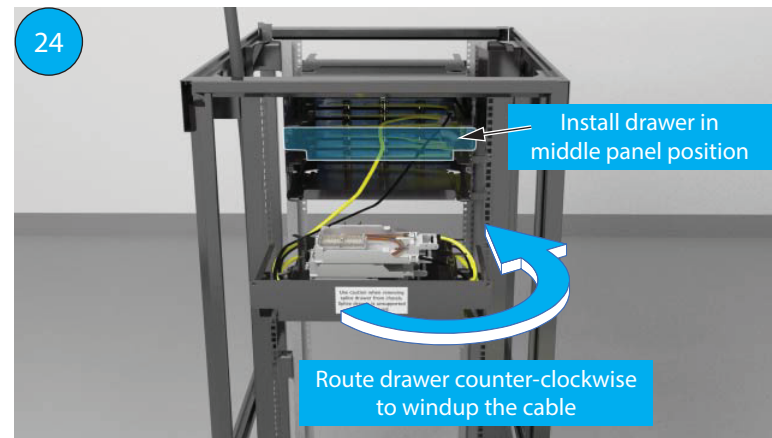
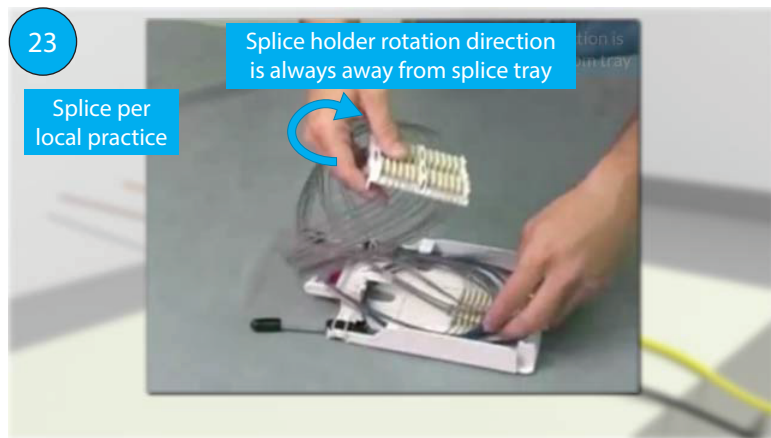
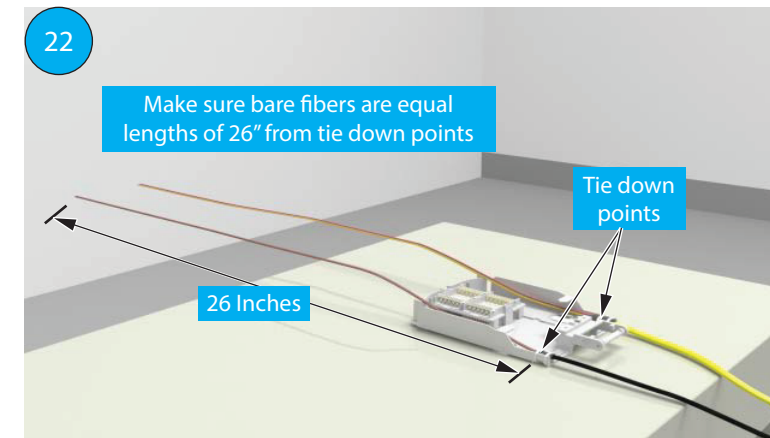
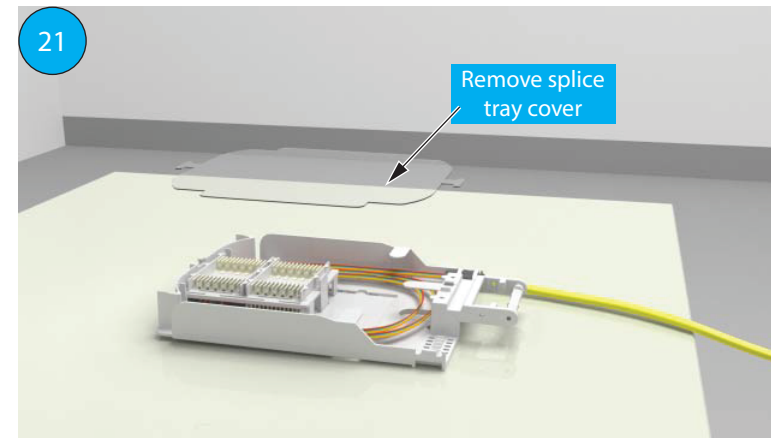
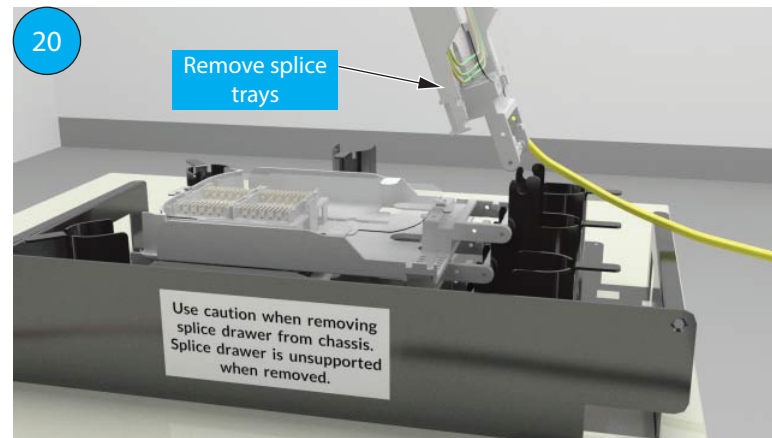
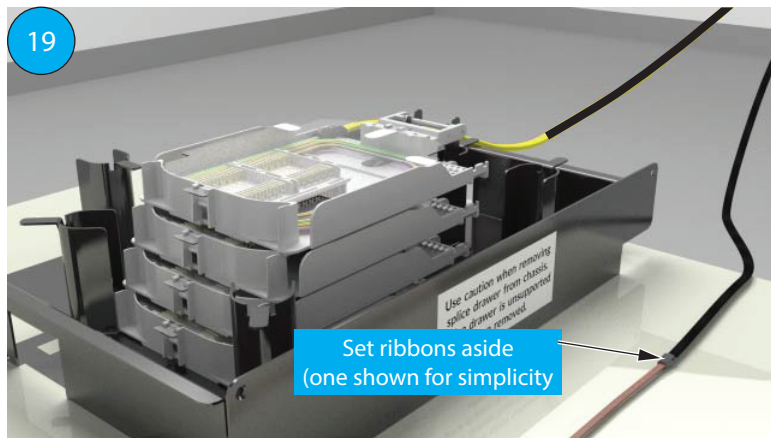
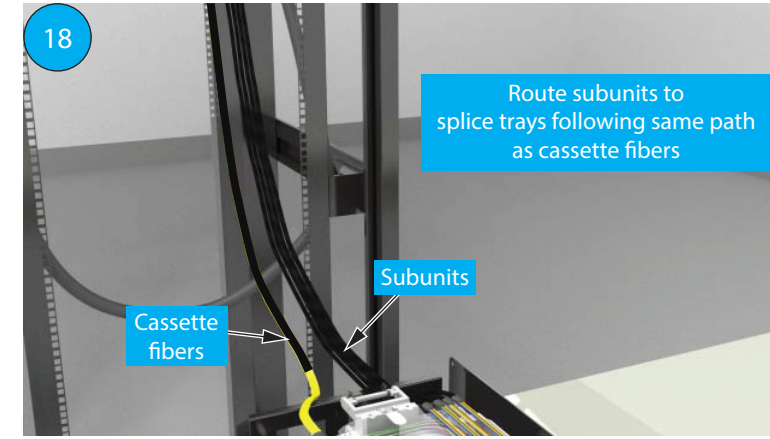
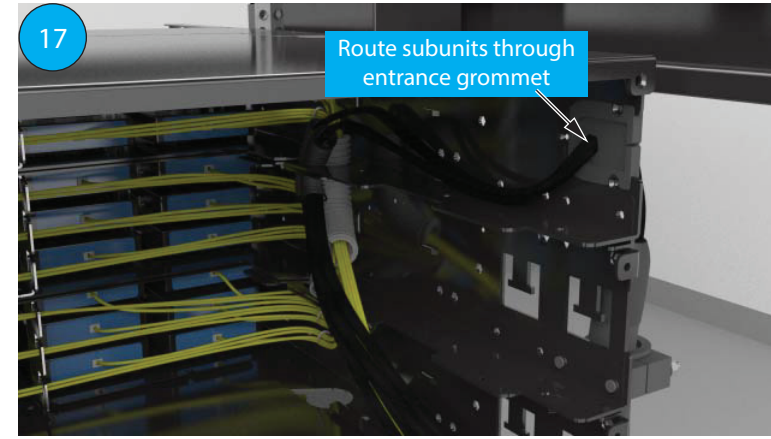
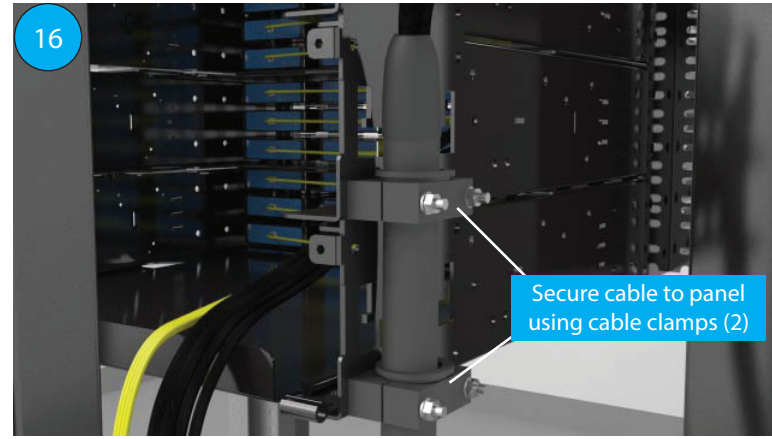
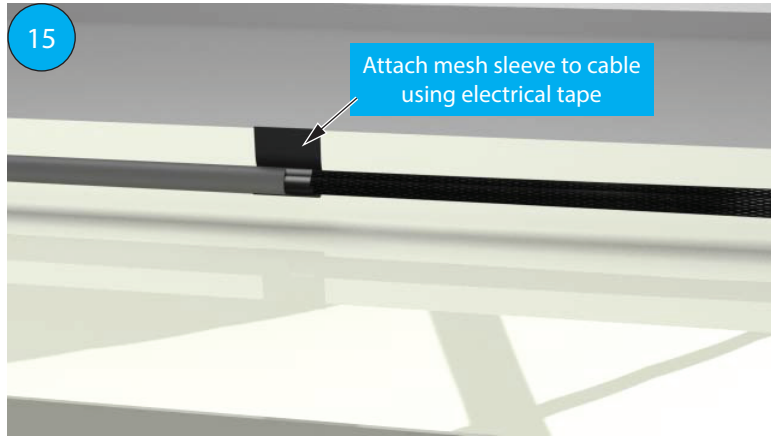
Ultra Density Splice (UDS) Panel

6RU: 864 Patch/Splice

2RU: 288 Patch/Splice

NOTE: This document shows the UDS being installed in a cabinet.





(CLICK)



(SCAN)



PRODUCT PATENTS: <http://www.commscope.com/ProductPatent/ProductPatent.aspx>
 PRODUCT SUPPORT: <http://www.commscope.com/SupportCenter>
 Copy and paste URL to view video:
 (<https://www.youtube.com/playlist?list=PLtNgUjhC9bF2rEAmgZUeZSWT4o3en3kVs>)