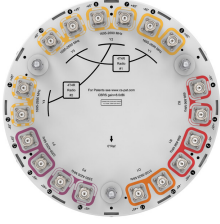


NNV4SSP-360S-F4-V4



18-port small cell antenna, 4x 698-896, 8x 1695-2690, 4x 3300- 4200 and 2x 5150-5925 MHz, 360° Horizontal Beamwidth, fixed tilt.

General Specifications

Antenna Type	Omni
Band	Multiband
Color	Light Gray (RAL 7035)
Grounding Type	RF connector inner conductor and body grounded to reflector and mounting bracket
Performance Note	Outdoor usage
Radome Material	ASA
Radiator Material	Aluminum Low loss circuit board
Reflector Material	Aluminum
RF Connector Interface	4.3-10 Female
RF Connector Location	Bottom
RF Connector Quantity, high band	14
RF Connector Quantity, low band	4
RF Connector Quantity, total	18

Dimensions

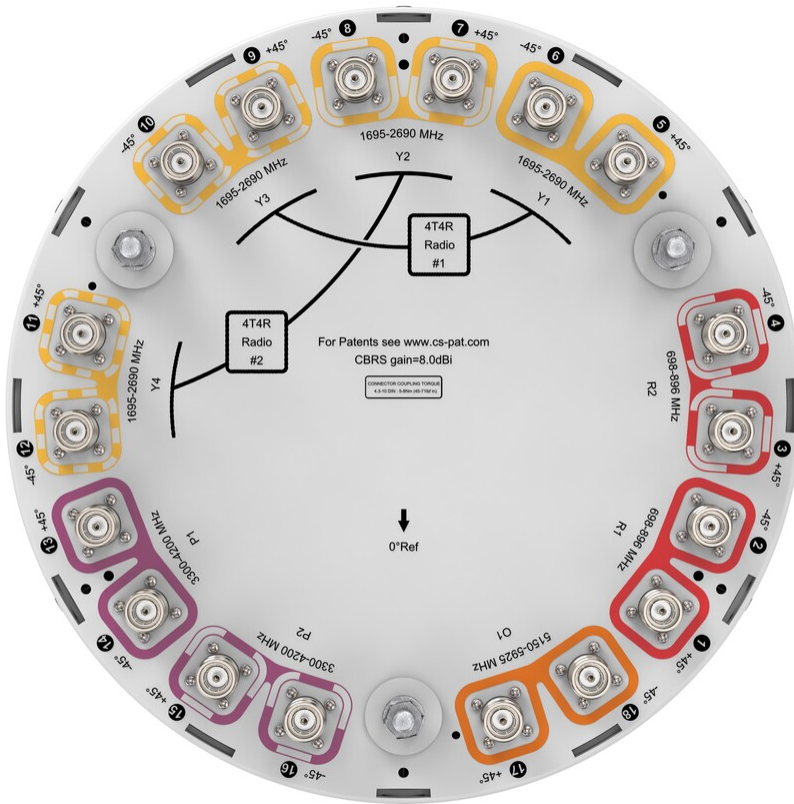
Width	370 mm 14.567 in
Depth	370 mm 14.567 in
Length	680 mm 26.772 in
Net Weight, antenna only	18.1 kg 39.904 lb

5 GHz Port Power Table

5 GHz FCC Power Requirements				
U-NII Band	U-NII 1	U-NII 2A	U-NII 2C	U-NII 3
Frequency (MHz)	5150 - 5250	5250 - 5350	5470 - 5725	5725 - 5850
Max Input power per port to align with FCC Title 47 Part 15 (Watts)	0.5	0.125	0.125	0.5

Port Configuration

NNV4SSP-360S-F4-V4



Electrical Specifications

Impedance	50 ohm
Operating Frequency Band	1695 – 2690 MHz 3300 – 4200 MHz 5150 – 5925 MHz 698 – 896 MHz
Polarization	±45°
Total Input Power, maximum	1,000 W

Electrical Specifications

Frequency Band, MHz	698–806	806–896	1695–1920	1920–2180	2300–2360	2360–2690	3300–3550	3550–3700	3700–4200	5150–5925
Gain, dBi	5.4	5.5	7.8	8.2	8	9.1	6.9	7.2	8.1	5.1
Beamwidth, Horizontal, degrees	360	360	360	360	360	360	360	360	360	360
Beamwidth, Vertical, degrees	39.4	36.7	20.1	16.8	14.7	14.3	32.8	33.6	29.5	21.8
Beam Tilt,	4	4	4	4	4	4	0	0	0	0

NNV4SSP-360S-F4-V4

degrees

USLS (First Lobe), dB	12	8	15	15	12	11	11	11	7	
Isolation, Cross Polarization, dB	25	25	25	25	25	25	25	25	25	25
Isolation, Inter-band, dB	25	25	25	25	25	25	25	25	25	25
VSWR Return loss, dB	1.5 14.0	1.5 14.0	1.5 14.0	1.5 14.0	1.5 14.0	1.5 14.0	1.5 14.0	1.5 14.0	1.5 14.0	1.5 14.0
PIM, 3rd Order, 2 x 20 W, dBc	-153	-153	-153	-153	-153	-153	-140	-140	-140	
Input Power per Port, maximum, watts	125	125	125	125	125	125	100	100	100	10
Input Power per Port at 50°C, maximum, watts	75	75	75	75	75	75	50	50	50	5

Electrical Specifications, BASTA

Frequency Band, MHz	698-806 806-896 1695-1920 1920-2180 2300-2360 2360-2690 3300-3550 3550-3700 3700-4200 5150-5925									
Gain by all Beam Tilts, average, dBi	5	5.2	7	7.3	7.5	8.6	6.2	6.7	7.3	4.1
Gain by all Beam Tilts Tolerance, dB	±0.9	±0.5	±1.2	±0.9	±0.9	±0.9	±0.8	±0.9	±1	±1.4
Beamwidth, Vertical Tolerance, degrees	±5	±5	±3.7	±1.5	±1.2	±1.8	±3.5	±3.5	±4.4	±4.6

Mechanical Specifications

Wind Loading @ Velocity, frontal	144.0 N @ 150 km/h (32.4 lbf @ 150 km/h)
Wind Loading @ Velocity, lateral	144.0 N @ 150 km/h (32.4 lbf @ 150 km/h)
Wind Loading @ Velocity, maximum	144.0 N @ 150 km/h (32.4 lbf @ 150 km/h)
Wind Loading @ Velocity, rear	144.0 N @ 150 km/h (32.4 lbf @ 150 km/h)
Wind Speed, maximum	241 km/h (150 mph)

Packaging and Weights

Width, packed	478 mm 18.819 in
----------------------	--------------------

NNV4SSP-360S-F4-V4

Depth, packed	464 mm 18.268 in
Length, packed	966 mm 38.032 in
Weight, gross	22.3 kg 49.163 lb

Regulatory Compliance/Certifications

Agency	Classification
ISO 9001:2015	Designed, manufactured and/or distributed under this quality management system



* Footnotes

Performance Note	Severe environmental conditions may degrade optimum performance
-------------------------	---