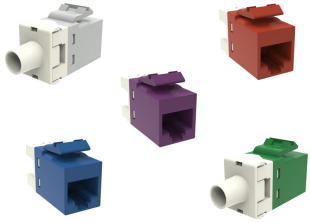


USL600

Base Product



SL-Series Modular Jack, RJ45, Cat6 Unshielded

Product Classification

Regional Availability	North America
Portfolio	Uniprise®
Product Type	Modular jack
Product Series	USL Series

General Specifications

ANSI/TIA Category	6
Cable Type	Unshielded
Conductor Type	Solid Stranded
Termination Type	IDC
Wiring	T568A T568B

Dimensions

Compatible Conductor Gauge, solid	24–22 AWG
Compatible Conductor Gauge, stranded	26–24 AWG

Electrical Specifications

Contact Resistance Variation, maximum	20 mOhm
Contact Resistance, maximum	100 mOhm
Current Rating at Temperature	1.5 A @ 20 °C 1.5 A @ 68 °F
Dielectric Withstand Voltage, RMS, conductive surface	1,500 Vac @ 60 Hz
Dielectric Withstand Voltage, RMS, contact-to-contact	1,000 Vac @ 60 Hz
Insulation Resistance, minimum	500 mOhm
Remote Powering	Fully supports the safe delivery of power over LAN cabling described by IEEE 802.3bt (Type 4) and complies with the unmating under electrical load requirements prescribed by IEC 60512-99-002

USL600

Material Specifications

Contact Plating Material

Precious metals

Material Type

Copper alloy | High-impact, flame retardant, thermoplastic

Termination Contact Plating

Nickel

Mechanical Specifications

Plug Insertion Life, minimum

750

Plug Insertion Life, test plug

IEC 60603-7 compliant plug

Plug Retention Force, minimum

133 N | 29.9 lbf

Environmental Specifications

Operating Temperature

-10 °C to +60 °C (+14 °F to +140 °F)

Storage Temperature

-40 °C to +70 °C (-40 °F to +158 °F)

Relative Humidity

Up to 95%, non-condensing

Flammability Rating

UL 94 V-0

Safety Standard

UL | cUL