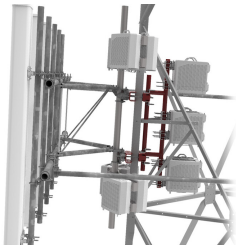


MTC4112 | CORE RRU MOUNT



Core RRU Mount with 12" Stand-off - Mounts to Spine on G2 Series Mounts

Designed for G2 RHD Series Mounts with or without Extended Spine • Internal tower RRU mount • Decreased PIM from radio relocation • Increased mount stability • Decreased face loading • Increased mount versatility without the need for a new RRU mount NOTE: Requires use of RR-FA2 RRU brackets

Product Classification

Product Type Remote radio head unit mount

General Specifications

Mounting Pipe, 88.9 mm (3-1/2 in) OD

Dimensions

Height 3,048 mm | 120 in

Length 419.1 mm | 16.5 in

Compatible Diameter 88.9 mm | 3.5 in

Mounting Diameter, maximum 88.9 mm | 3.5 in

Mounting Diameter, minimum 88.9 mm | 3.5 in

Stand-off Distance 304.8 mm | 12 in

Material Specifications

Material Type Hot dip galvanized steel

Mechanical Specifications

Wind Rating For Specifications, please contact steelproducts@commscope.com or call 800-255-1479

Packaging and Weights

Included Clamps | Hardware | Stand-off

Packaging quantity 1

Weight, net 50.476 kg | 111.28 lb

Regulatory Compliance/Certifications

MTC4112 | CORE RRU MOUNT

Agency

CHINA-ROHS

REACH-SVHC

ROHS

UK-ROHS



Classification

Below maximum concentration value

Compliant as per SVHC revision on www.commscope.com/ProductCompliance

Compliant

Compliant

* Footnotes

Wind Rating

BWS—Base Wind Speed; FBC—Florida Building Code