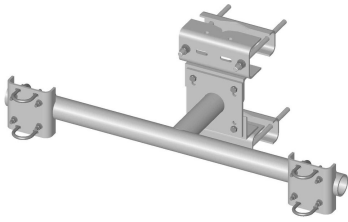


SF-DPM2-B



Co-location Dual Pipe Mount Base Kit; includes (2) 2-3/8 in pipe mounts
- pipes not included

Product Classification

Product Type Co-location dual pipe mount kit

General Specifications

Mounting Angle 60°, 203.2 mm (8 in) | Angle 90°, 152.4 mm (6 in) | Straight or tapered legs up to 203.2 mm (8 in) OD

Note Two 72 in x 8 in panel antenna per sector

Pipe, quantity 0

Tower Taper Non-tapered | Tapered

Dimensions

Height 254 mm | 10 in

Face Width 1.463 m | 4.8 ft

Width 1,447.8 mm | 57 in

Length 0.396 m | 1.3 ft

Face Support Pipe Diameter 88.9 mm | 3.5 in

Mounting Diameter, maximum 203.2 mm | 8 in

Mounting Diameter, minimum 0 mm | 0 in

Pipe Outer Diameter 60.96 mm | 2.4 in

Stand-off Distance 391.16 mm | 15.4 in

Material Specifications

Material Type Hot dip galvanized steel

Mechanical Specifications

Wind Rating 120 mph (BWS) at 150 ft AGL | 140 mph (3-second gust) at 150 ft AGL using Exposure D per FBC

SF-DPM2-B

Wind Rating Test Method TIA/EIA-222

Packaging and Weights

Included Clamps | Frame | Pipe mounts | Saddle mounts

Packaging quantity 1

Weight, net 95.6 kg | 210.762 lb

Regulatory Compliance/Certifications

Agency

ISO 9001:2015



Classification

Designed, manufactured and/or distributed under this quality management system

* Footnotes

Wind Rating BWS—Base Wind Speed; FBC—Florida Building Code