

Work Area Outlets

Faceplates, surface boxes, inserts
and more for the work area



25 Year System Performance Coverage*

We are confident that your AMP NETCONNECT cabling system will keep performing to current TIA/EIA industry standards. If the registered system ever fails to meet those standards within 25 years of the date of installation, we'll provide the reasonable parts and labor to replace or repair the AMP NETCONNECT product.

25 Year Component Coverage*

CommScope also offers a 25 Year Component Warranty to protect individual AMP NETCONNECT cabling system components. If a component fails within 25 years of the date of installation, we'll provide the reasonable parts to replace or repair the registered AMP NETCONNECT product.

It's Standard Equipment

This coverage is automatically part of the package when*:

- AMP NETCONNECT products are specified end-to-end
- A CommScope authorized NETCONNECT Design & Installation (ND&I) contractor registers the network project with CommScope
- That ND&I performs the actual installation in accordance with CommScope requirements

Who's Covered

Unlike most systems suppliers, CommScope provides warranty coverage directly to the end user. Many suppliers provide coverage to the installers, who then provide coverage to the customer. But with CommScope warranties, there are no middlemen. The warranties are between you and CommScope.

People & Products to Answer the Cabling Challenge.

Cabling a retail store, casino or office building can be complex. Yet the solution for productive connectivity and cable management can be as simple as talking to the right people - The AMP NETCONNECT business unit of CommScope.

The reason is what we bring to the building infrastructure challenges you face. In-depth technical knowledge and expertise from decades of experience. Innovative technologies from ongoing R&D. And quality products for every power, data, voice and video networking need. One of the broadest lines in the industry, in fact.

Additionally, it's what we do to answer the challenge: develop and deliver integrated, made-to-order solutions that optimize network performance, increase productivity and produce more immediate return-on-investment.

And it's not just providing technology. It's making sure solutions are efficiently and effectively installed: working with distributors and customers so products are delivered when and where you need them. And maintaining a global network of certified installation contractors. It all means, simply, that AMP NETCONNECT cabling systems provide the answers you're looking for: the whole solution for any cabling challenge. From the ground up.

*Some conditions may apply. AMP NETCONNECT Home Net-Works Systems qualify for a 25 year component warranty only. For more information, please visit www.amernetconnect.com or call 1-800-553-0938. Outside the U.S., please contact your local AMP NETCONNECT product sales office.

Contents

Faceplate/Outlet, Jack and Insert Twisted Pair Compatibility List	2 - 3
Faceplates and Accessories	4
SL Series Faceplates	5
SL Series Modules	5 - 6
Wall Phone Faceplate	7
Angled Faceplates	7
Stainless Steel Faceplates from Semtron	8
Mounting Straps	9
Faceplates for Mounting Straps	9
HIDEOUT Outlets	10
HIDEAWAY Multimedia Outlets	11
HIDEAWAY Multimedia Outlet Accessories	11
SL Series Multimedia Inserts	12 - 13
MT-RJ SL Series Multimedia Housing	14
Multimedia Modules for Work Area Outlets	15
Multimedia Security Outlet	16
Surface Mount Outlet and Accessories	16
Surface Mount Modules	17
12-Port Universal Surface Mount Outlet	17
Surface Boxes	18
Modular Jack Boxes	18
Faceplates for WIREMOLD Raceways	18
WIREMOLD 2A Inserts	19
Access Floor Workstation Modules	20
AFWM Flush Faceplates	21
Concrete Form Boxes from Barthelmes Mfg. Co.	22
Desktop Monuments	22
FLEX-MODE Modular Furniture Faceplate Kits	23
SL Series Furniture Outlets	23
Faceplates for HERMAN MILLER Furniture	24
Extenders & Adapters for Furniture Faceplates	24
FLEX-MODE Modular Furniture Faceplate Accessories	25

Faceplate/Outlet, Jack and Insert Twisted Pair Compatibility List

		SL Series Unshielded Modular Jacks	SL Series Shielded Modular Jacks	XG Category 6 AMP- TWIST Modular Jack	SL Series Multimedia Jacks	SL Series Multimedia Inserts	SL Series Multimedia Modules	SL Series Modules	110Connect Unshielded Modular Jacks	110Connect Shielded Modular Jacks
SL Series Modules	1116409	X	X	X	X	X	—	—	X	—
	1116406	X	X	X	X	X	—	—	X	—
	1116408	X	—	—	X	X	—	—	—	—
SL Series Faceplates	1339118	—	—	—	—	—	X	X	—	—
	1339119	—	—	—	—	—	X	X	—	—
	1479486	—	—	—	—	—	X	X	—	—
Faceplates	2111008	X	X	X	X	X	—	—	X	X
	2111009	X	X	X	X	X	—	—	X	X
	2111010	X	X	X	X	X	—	—	X	X
	2111011	X	X	X	X	X	—	—	X	X
	2111203	X	X	X	X	X	—	—	X	X
	2111012	X	X	X	X	X	—	—	X	X
	2111013	X	X	X	X	X	—	—	X	X
	2111014	X	X	X	X	X	—	—	X	X
	2111015	X	X	X	X	X	—	—	X	X
	2111021	X	X	X	X	X	—	—	X	X
	2111022	X	X	X	X	X	—	—	X	X
	2111023	X	X	X	X	X	—	—	X	X
	2111024	X	X	X	X	X	—	—	X	X
2111025	X	X	X	X	X	—	—	X	X	
Angled Faceplates	1375155	X	X	X	X	X	—	—	X	X
	406185	X	X	X	X	X	—	—	X	X
Wall Mount Telephone Faceplate	1479152	X	X	X	X	X	—	—	X	X

Faceplate/Outlet, Jack and Insert Twisted Pair Compatibility List (continued)

		SL Series Unshielded Modular Jacks	SL Series Shielded Modular Jacks	XG Category 6 AMP-TWIST Modular Jack	SL Series Multimedia Jacks	SL Series Multimedia Inserts	SL Series Multimedia Modules	SL Series Modules	110Connect Unshielded Modular Jacks	110Connect Shielded Modular Jacks
HIDEOUT Outlet	503999	X	X	X	X	X	—	—	X	—
	503997	X	X	X	X	X	—	—	X	—
	503998	X	X	X	X	X	—	—	X	—
HIDEAWAY Multimedia Outlets	1479815	X	—	—	X	X	—	—	—	—
	1479946	X	X	X	X	X	—	—	—	—
Multimedia Security Outlet	1116535	X	X	X	X	X	—	—	X	X
12-Port Universal Office Box	1479358	X	X	X	X	X	—	—	X	X
Modular Jack Boxes	1116697	X	—	—	—	—	—	—	X	—
	1116698	X	—	—	—	—	—	—	X	—
Surface Mount Modules	1933668	X	X	X	X	X	—	—	X	X
	1933671	X	X	X	X	X	—	—	X	X
	1933674	X	X	X	X	X	—	—	—	—
WIREMOLD Raceway Faceplates	1375050	X	X	X	X	X	—	—	X	X
	1375049	X	X	X	X	X	—	—	—	—
WIREMOLD 2A Inserts	CM2-U2AMP-XX	X	X	X	X	—	—	—	—	—
AFWM Flush Faceplates	569916	X	X	—	X	—	—	—	X	—
	569917	X	X	—	X	—	—	—	X	X
	1116695	X	X	—	X	—	—	—	X	X
FLEX-MODE Modular Furniture Faceplates Kits	1933134	X	X	X	X	X	—	—	—	—
	558106	X	X	X	X	X	—	—	X	X
	558107	X	X	X	X	X	—	—	X	X
SL Series Furniture Outlets	1375005	X	—	—	X	X	—	—	—	—
	1375006	X	—	—	X	X	—	—	—	—
Flush Faceplate for Herman Miller Furniture	558357	X	X	X	X	X	—	—	X	—

Faceplates and Accessories

- Accepts all AMP-TWIST jacks, SL Series jacks, 110Connect jacks, MTRJ outlet jacks and SL Series inserts

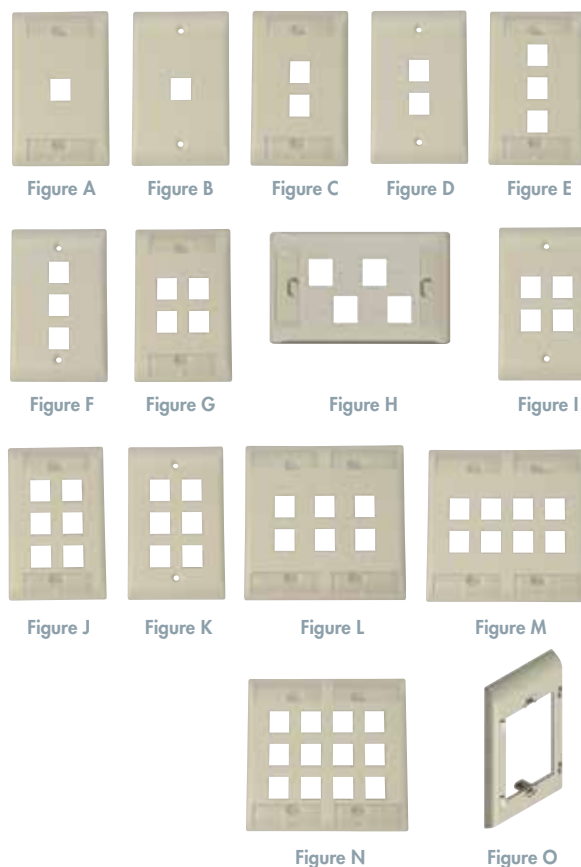
Single gang dimensions:

- 2.75" [69.85 mm] x
- 4.5" [114.30 mm] x
- 0.22" [5.59 mm]

Double gang dimensions:

- 4.56" [115.82 mm] x
- 4.5" [114.30 mm] x
- 0.22" [5.59 mm]

- Models available with and without labeling options
- Label areas with integrated, hinged covers
- Mold-over icon and leveling (for icons see Chapter 17)
- Improved label viewing area is larger with integrated, convex label covers that flip down and snap in place
- Larger radius on the faceplate edge and the convex shape of the label covers allow labels to be more easily viewed from above when faceplates are behind furniture
- Extender kits are used to add 0.5 inches [12.7 mm] of space between the mounting surface and the faceplate
 - Extender kit dimensions:
 - 5.21" [132.33 mm] x
 - 2.89" [73.50 mm] x
 - 0.50" [12.70 mm]

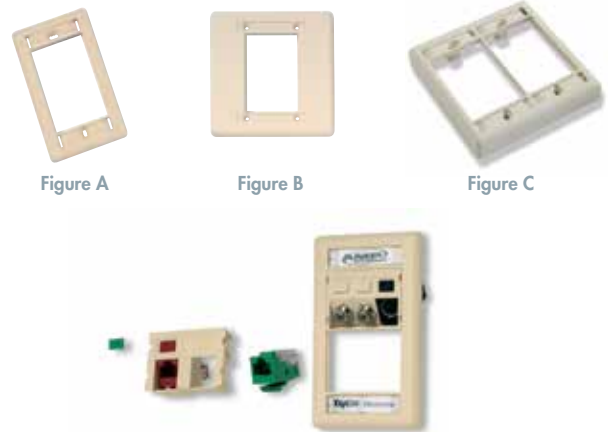


Ordering Information

Port Count	Footprint	Integrated Labeling Options	Orientation	Figure	Part Number					
					Almond	Black	White	Gray	Electrical Ivory	Alpine White
1	Single Gang	Label Covers and Icons	Vertical	A	2111008-1	2111008-2	2111008-3	2111008-4	1-2111008-1	1-2111008-3
		None	Vertical	B	2111021-1	2111021-2	2111021-3	2111021-4	1-2111021-1	1-2111021-3
2	Single Gang	Label Covers and Icons	Vertical	C	2111009-1	2111009-2	2111009-3	2111009-4	1-2111009-1	1-2111009-3
		None	Vertical	D	2111022-1	2111022-2	2111022-3	2111022-4	1-2111022-1	1-2111022-3
3	Single Gang	Label Covers and Icons	Vertical	E	2111010-1	2111010-2	2111010-3	2111010-4	1-2111010-1	1-2111010-3
		None	Vertical	F	2111023-1	2111023-2	2111023-3	2111023-4	1-2111023-1	1-2111023-3
4	Single Gang	Label Covers and Icons	Vertical	G	2111011-1	2111011-2	2111011-3	2111011-4	1-2111011-1	1-2111011-3
			Horizontal	H	2111203-1	2111203-2	2111203-3	2111203-4	1-2111203-1	1-2111203-3
		None	Vertical	I	2111024-1	2111024-2	2111024-3	2111024-4	1-2111024-1	1-2111024-3
6	Single Gang	Label Covers and Icons	Vertical	J	2111012-1	2111012-2	2111012-3	2111012-4	1-2111012-1	1-2111012-3
		None	Vertical	K	2111025-1	2111025-2	2111025-3	2111025-4	1-2111025-1	1-2111025-3
	Double Gang	Label Covers and Icons	Vertical	L	2111013-1	2111013-2	2111013-3	2111013-4	1-2111013-1	1-2111013-3
		None	Vertical	M	2111014-1	2111014-2	2111014-3	2111014-4	1-2111014-1	1-2111014-3
12	Double Gang	Label Covers and Icons	Vertical	N	2111015-1	2111015-2	2111015-3	2111015-4	1-2111015-1	1-2111015-3
Extender Kit				O	2111201-1	2111201-2	2111201-3	2111201-4	1-2111201-1	1-2111201-3

SL Series Faceplates

- Single gang and double gang, single-sided faceplates accept three 1 Unit or two 1.5 Unit SL Series Modules
- Double gang, double-sided faceplates accept three 1 Unit or two 1.5 Unit SL Series Modules on each side
- Front-loading modules eliminate need to remove faceplates from wall for changes or repairs
- Double gang, double-sided SL Series faceplates:
 - Dimensions: 0.675" D x 4.490" W x 4.540" H
 - For use with openings a minimum of 2.81" x 3.59" (not suitable for mud rings/device covers)



Description	Width		Figure	Almond	Black	White	Gray	Electrical Ivory	Alpine White
SL Series Faceplates	Single Gang	Single-sided	A	1339118-1	1339118-2	1339118-3	1339118-4	1-1339118-1	1-1339118-3
	Double Gang	Single-sided	B	1339119-1	1339119-2	1339119-3	1339119-4	1-1339119-1	1-1339119-3
		Double-sided	C	1479486-1	1479486-2	1479486-3	1479486-4	1-1479486-1	1-1339119-3

SL Series Modules

- Modules fit SL Series faceplates
- Front loading
- 2-Port Modules are suitable for use with all SL Series jacks, MTRJ outlet jacks and SL Series inserts
- 3-Port Module is suitable for use with unshielded SL Series Jacks, MTRJ Outlet Jacks and SL Series Multimedia Inserts
- 2- and 3-Port Modules feature patented "invisible" icon holes which stay hidden until used
- SVGA Multimedia Modules are available loaded with a SVGA 110 Termination Module or unloaded for use with 15 position subminiature D connectors (sold separately)
- SVGA - 110 Termination Module
 - Suitable for use with Category 5e or 6 UTP or FTP (recommended) cables
 - Supported Resolutions:
 - VGA (640 x 480)
 - SVGA (800 x 600)
 - XGA (1024 x 768)
 - For use where distances between video device and source device do not exceed:
 - 20 ft (Cat 5e or 6 UTP cable)
 - 35 ft (Cat 5e or 6 FTP cables)
 - Recommended for use with FTP cables to utilize drain wire as a 9th conductor
- SVGA - Screw terminal
 - Allows field termination of SVGA cable
 - For distances up to 150 feet
 - Supported Resolutions:
 - 800 x 600
 - Recommended for use with 5 conductor, 26 AWG stranded coaxial video cable

SL Series Modules (continued)



Figure A



Figure B



Figure C



Figure D



Figure E



Figure F



Figure G



Figure H

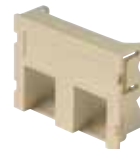


Figure I



Figure J



Figure K



Figure L



Figure M

Ordering Information

Description		Units	Figure	Almond	Black	White	Gray	Electrical Ivory	Alpine White
Blank		1	A	1116410-1	1116410-2	1116410-3	1116410-4	1-1116410-1	1-1116410-3
		1.5	B	1116407-1	1116407-2	1116407-3	1116407-4	1-1116407-1	1-1116407-3
SC Duplex	Single-mode, Blue Coupler	1		1375306-1	1375306-2	1375306-3	1375306-4	1-1375306-1	1-1375306-3
	Multimode, Beige Coupler	1	C	1375123-1	1375123-2	1375123-3	1375123-4	1-1375123-1	1-1375123-3
SC Duplex to Dual ST	Multimode, Beige Coupler	1	D	1375241-1	1375241-2	1375241-3	1375241-4	1-1375241-1	1-1375241-3
SVGA	Loaded with SVGA 110 Punch Down Module	1	E	1479288-1	1479288-2	1479288-3	1479288-4	1-1479288-1	1-1479288-3
	Unloaded	1	F	1479079-1	1479079-2	1479079-3	1479079-4	1-1479079-1	1-1479079-3
	Loaded with SVGA Screw Terminal Module	1	G	1933423-1	1933423-2	1933423-3	1933423-4	1-1933423-1	1-1933423-3
2-Port	Straight	1	H	1116409-1	1116409-2	1116409-3	1116409-4	1-1116409-1	1-1116409-3
	Angled	1.5	I	1116406-1	1116406-2	1116406-3	1116406-4	1-1116406-1	1-1116406-3
3-Port	Angled	1.5	J	1116408-1	1116408-2	1116408-3	1116408-4	1-1116408-1	1-1116408-3
HDMI	Type A Module with Cable	1	K	1933800-1	1933800-2	1933800-3	1933800-4	1-1933800-1	1-1933800-3
	Type A Module Adapter	1	L	1933801-1	1933801-2	1933801-3	1933801-4	1-1933801-1	1-1933801-3
	Unloaded	1	M	1933686-1	1933686-2	1933686-3	1933686-4	1-1933686-1	1-1933686-3

Wall Phone Faceplate

- For use with 110Connect or SL Series Modular Jacks
- Features studs used to mount standard wall mount telephones



Ordering Information

Description	Almond	Black	White	Gray	Electrical Ivory
Wall Phone Faceplate	1479152-1	1479152-2	1479152-3	1479152-4	1-1479152-1

Angled Faceplates

- Accept all AMP-TWIST jacks, SL Series jacks, MTRJ outlet jacks and SL Series inserts
- Angled connector exits
- Protects connections
- Allows closer furniture placement
- Icons in Chapter 17



Figure A

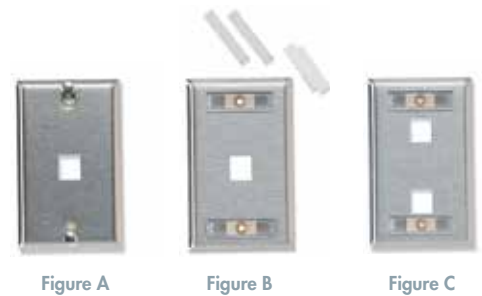
Figure B

Ordering Information

Description	Port Count	Figure	Almond	Black	White	Gray	Electrical Ivory	Alpine White
Angled Faceplates	2	A	1375155-1	1375155-2	1375155-3	1375155-4	1-1375155-1	1-1375155-3
	4	B	406185-1	406185-2	406185-3	406185-4	1-406185-1	1-406185-3

Stainless Steel Faceplates from Semtron

- Flush mount installation
- 1FM-ØE-AMP-PHONE is for use with 110Connect or SL Series Modular Jacks and features studs used to mount standard wall mount telephones
- 2-, 4- and 6-Port Faceplates accept SL Series jacks, AMP-TWIST jacks, MTRJ outlet jacks, and SL Series inserts
- Double Gang Stainless Steel Faceplates with Power additionally accept one duplex power receptacle (sold separately)
- These faceplates are available directly from:
Semtron, Inc.
 6465 Corunna Rd.
 Flint, MI 48532
 Phone: 1-800-732-9080
 Fax: 810-732-9665
 Email: semtron@semtron.com
 Web: www.semtron.com

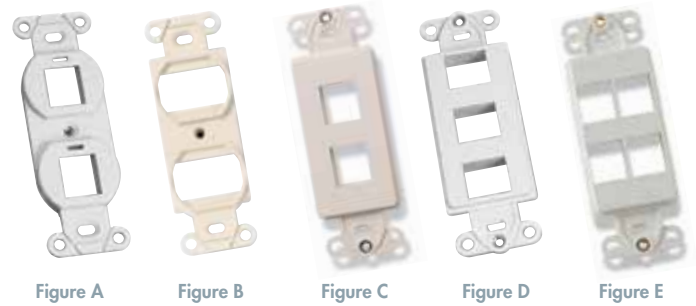


Ordering Information

Description	Port Count	Foot Print	Duplex Power	Labeling	Figure	Semtron Part Number
SEMTRON Stainless Steel Wall Phone Faceplate	1	Single Gang	-	-	A	1FM-ØE-AMP-PHONE
SEMTRON Stainless Steel Faceplates	1	Single Gang	-	-	B	1FM-ØE-AMP-LAB
			-	-		1FM-ØØE-AMP
	2	Single Gang	-	with Labels and Label Covers	C	1FM-ØØE-AMP-LAB
			with Duplex Opening	-		2FM-DØØE-AMP
	3	Single Gang	-	with Labels and Label Covers		1FM-(3)ØE-AMP-LAB
			-	-		1FM-(4)ØE-AMP
	4	Single Gang	-	with Labels and Label Covers	D	1FM-(4)ØE-AMP-LAB
			with Duplex Opening	-		2FM-D(4)ØE-AMP
	6	Single Gang	-	-		1FM-(6)ØE-AMP
			-	with Labels and Label Covers		1FM-(6)ØE-AMP-LAB
	6	Double Gang	with Duplex Opening	-	E	2FM-D(6)ØE-AMP
			-	with Labels and Label Covers	F	2FM-(6)ØE-AMP-LAB
12	Double Gang	-	with Labels and Label Covers		2FM-(12)ØE-AMP-LAB	

Mounting Straps

- Accept SL Series jacks, MTRJ outlet jacks, and SL Series inserts
- Duplex Mounting Straps fit standard duplex faceplates
- Decorator Mounting Straps fit standard decorator faceplates
- Allow easy mounting of communications outlets in power poles and floor pedestals
- Accommodates icons for port identification, see Chapter 17



Ordering Information

Description	Port Count	Figure	Almond	Black	White	Gray	Electrical Ivory
Duplex Mounting Strap	2	A	1116618-1	1116618-2	1116618-3	1116618-4	1-1116618-1
	4	B	1339120-1	1339120-2	1339120-3	1339120-4	1-1339120-1
Decorator Mounting Strap	2	C	1479784-1	1479784-2	1479784-3	1479784-4	1-1479784-1
	3	D	1116616-1	1116616-2	1116616-3	1116616-4	1-1116616-1
	4	E	1479504-1	1479504-2	1479504-3	1479504-4	1-1479504-1

Faceplates for Mounting Straps

- Duplex Faceplates accept 2 and 4-Port Duplex Mounting Straps
- Decorator Faceplates accept 2, 3 and 4-Port Decorator Mounting Straps



Ordering Information

Description	Footprint	Figure	Almond	Black	White	Gray	Electrical Ivory
Decorator Faceplate	Single Gang	A	1479159-1	1479159-2	1479159-3	1479159-4	1-1479159-1
	Double Gang	B	1479625-1	1479625-2	1479625-3	1479625-4	1-1479625-1
Duplex Faceplate	Single Gang	C	1479160-1	1479160-2	1479160-3	1479160-4	1-1479160-1

HIDEOUT Outlets

- Double gang box with single gang cover recommended.
- May not fit all single gang boxes
- Hides and protects cable connections
- Feeds from bottom to allow flush furniture placement
- Fits standard electrical boxes
- Icons in Chapter 17
- Each kit includes sub-plate, faceplate, adhesive labels, cable ties, and mounting screws. Media modules and icons must be ordered separately. Faceplates are plastic except for the stainless steel version
- Accepts the following (see table for detailed load information):
 - Shielded or unshielded SL Series jacks
 - Unshielded 110Connect jacks
 - MTRJ outlet jacks
 - Duplex fiber optic adapters
 - MTRJ parallel dress clips
 - SL Series inserts
- Shielded SL Series jacks work in bottom row of faceplate only



Snap-on Cover



Screw-on Cover

Accepted Connectivity	Maximum Load Capacity			
	Option 1	Option 2	Option 3	Option 4
Unshielded SL Series, 110Connect Jacks, MTRJ Outlet Jacks, or SL Series Inserts	4	2	0	0
Shielded SL Series Jacks	0	2	2	0
Duplex Fiber Optic Adapters, or MTRJ Parallel Dress Clips	1	1	1	2

Ordering Information

Description	Included Faceplate	Faceplate Color		
		Almond	White	Stainless Steel
HIDEOUT Outlet Kit	Screw-on	503997-1	503997-3	503998-1
	Snap-on	503999-1	503999-3	–

HIDEAWAY Multimedia Outlets

- Accepts the following (see table for detailed load information):
 - Shielded and unshielded SL Series jacks
 - AMP-TWIST jacks
 - MTRJ outlet jacks
 - Duplex couplers
 - MTRJ parallel dress clips
 - SL Series inserts
- Fit single and double gang electrical J-boxes
- Feature “invisible” icon holes which remain hidden until used
- Feature integral tabs for easy fiber loop management
- Breakaway tabs in duplex fiber coupler cut outs allow HIDEAWAY outlets to accept “flangless” SECURE LC duplex, standard LC duplex, or hybrid LC duplex couplers with retention clips (break out the tabs when using standard duplex couplers)

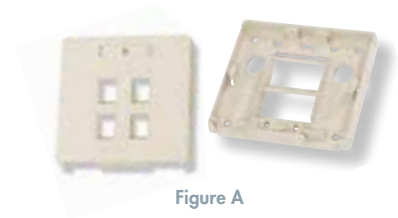


Figure A

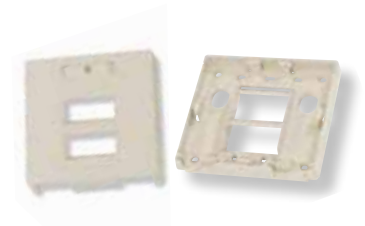


Figure B

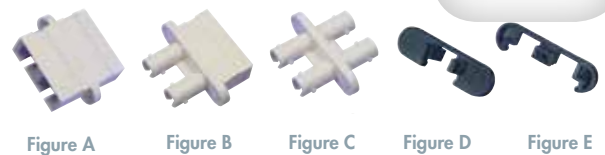
Accepted Connectivity	Maximum Load Capacity	
	4-Port	6-Port
Unshielded SL Series, MTRJ Outlet Jacks, or SL Series Inserts	4	6
Shielded SL Series Jacks, AMP-TWIST Jacks	4	4
Duplex Fiber Optic Adapters, or MTRJ Parallel Dress Clips	2	2

Ordering Information

Port Count	Figure	Almond	Black	White	Gray	Electrical Ivory
4	A	1479946-1	1479946-2	1479946-3	1479946-4	1-1479946-1
6	B	1479815-1	1479815-2	1479815-3	1479815-4	1-1479815-1

HIDEAWAY Multimedia Outlet Accessories

- 1-Port MTRJ Parallel Dress Clip holds one MTRJ Jack sold separately
- 2-Port MTRJ Parallel Dress Clip holds two MTRJ Jacks sold separately
- Optical Fiber Couplers for other fiber types are available



Ordering Information

Description			Figure	Part Number
Optical Fiber Adapters	Multimode (Beige)	SC Duplex	A	5504640-3
		SC Duplex to Dual ST	B	5504663-1
		Dual ST	C	504662-1
		LC Duplex (without Mounting Flanges)		6457567-2
MTRJ Parallel Dress Clips	1-Port (Holds 1 MTRJ Jack)	Package of 6	D	1374206-1
	2-Port (Holds 2 MTRJ Jacks)	Package of 3	E	1374205-1

SL Series Multimedia Inserts

- May be used in straight or angled faceplates, SL Series faceplate modules, surface mount modules, mounting straps and SL Series patch panels
- Inserts easily snap into place
- RCA 110 termination multimedia jack:
 - Use where distances are less than 130 ft
 - For audio and video signals
 - Uses one pair of twisted-pair cable
 - White, red or yellow dielectrics to match home theater equipment
 - Not recommended for component DVD connections
- S-Video 110 termination multimedia jack:
 - Use where distances are less than 130 ft
 - For S-Video Y/C (Luminance/Chrominance Black and White/Color) signals
 - Uses two pairs of a standard twisted-pair cable



Figure A



Figure B



Figure C



Figure D



Figure E



Figure F



Figure G



Figure H



Figure I



Figure J



Figure K



Figure L



Figure M



Figure N



Figure O



Figure P



Figure Q



Figure R



Figure S



Figure T

SL Series Multimedia Inserts (continued)

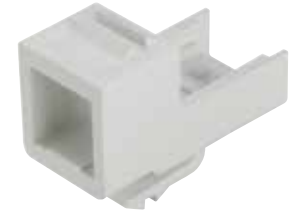
Ordering Information

Insert Type		Figure	Almond	Black	White	Gray	Electrical Ivory	Alpine White
3.5 mm Stereo, Mini-Headphone	Solder Termination	A	1479086-1	1479086-2	1479086-3	1479086-4	1-1479086-1	1-1479086-3
	Screw Terminal	B	1933582-1	1933582-2	1933582-3	1933582-4	1-1933582-1	1-1933582-3
Blank		C	1116412-1	1116412-2	1116412-3	1116412-4	1-1116412-1	1-1116412-3
BNC Coupler		D	1339124-1	1339124-2	1339124-3	1339124-4	1-1339124-1	1-1339124-3
F-Connector Coupler	2 GHz	E	1499855-1	1499855-2	1499855-3	1499855-4	1-1499855-1	1-1499855-3
RCA to 110 Punch Down	Red Dielectric	F	1479230-1	1479230-2	1479230-3	1479230-4	1-1479230-1	1-1479230-3
	White Dielectric		1479231-1	1479231-2	1479231-3	1479231-4	1-1479231-1	1-1479231-3
	Yellow Dielectric		1479232-1	1479232-2	1479232-3	1479232-4	1-1479232-1	1-1479232-3
RCA Coupler	Red Dielectric	G	1375361-1	1375361-2	1375361-3	1375361-4	1-1375361-1	1-1375361-3
	White Dielectric	H	1375362-1	1375362-2	1375362-3	1375362-4	1-1375362-1	1-1375362-3
	Yellow Dielectric		1375363-1	1375363-2	1375363-3	1375363-4	1-1375363-1	1-1375363-3
	Green Dielectric		1933192-1	1933192-2	1933192-3	1933192-4	1-1933192-1	1-1933192-3
	Blue Dielectric		1933193-1	1933193-2	1933193-3	1933193-4	1-1933193-1	1-1933193-3
	Orange Dielectric		1933194-1	1933194-2	1933194-3	1933194-4	1-1933194-1	1-1933194-3
RCA to F-Connector		I	1933096-1	1933096-2	1933096-3	1933096-4	1-1933096-1	1-1933096-3
RCA to Solder Termination	Red Dielectric	J	1375364-1	1375364-2	1375364-3	1375364-4	1-1375364-1	1-1375364-3
	White Dielectric	K	1375365-1	1375365-2	1375365-3	1375365-4	1-1375365-1	1-1375365-3
	Yellow Dielectric		1375366-1	1375366-2	1375366-3	1375366-4	1-1375366-1	1-1375366-3
ST Coupler	Multimode	L	1339123-1	1339123-2	1339123-3	1339123-4	1-1339123-1	1-1339123-3
	Single-mode	L	1479181-1	1479181-2	1479181-3	1479181-4	1-1479181-1	1-1479181-3
Speaker Post	Black Stripe	M	1479190-1	1479190-2	1479190-3	1479190-4	1-1479190-1	1-1479190-3
	Red Stripe	N	1479191-1	1479191-2	1479191-3	1479191-4	1-1479191-1	1-1479191-3
SC Simplex Coupler	Single-mode/ Multimode	O	1499836-1	1499836-2	1499836-3	1499836-4	1-1499836-1	1-1499836-3
S-Video		P	-	1375149-2	-	-	-	-
USB A to A Coupler		Q	1933659-1	1933659-2	1933659-3	-	-	-
USB B to A Coupler		R	1933661-1	1933661-2	1933661-3	-	-	-
HDMI Coupler			-	2111500-2	-	-	-	-
LC Duplex Coupler	Beige, OM1 (62.5 μm) Multimode	S	1-1933286-2					
	Black, OM2 (50 μm) Multimode		1-1933286-1					
	Aqua, OM3 and OM4 (XG 50 μm) Multimode		1933286-6					
	Green, Single-mode APC		1933286-3					
	Blue, Single-mode	T	1933286-4					

Note: APC (Angle Polish Connector) couplers are for use with angle polished connectors.

MT-RJ SL Series Multimedia Housing

- Easily snap into place
- MT-RJ SL Series housing accepts one MT-RJ Jack sold separately



Ordering Information

Description	Color	Part Number
MT-RJ SL Series Housing	Almond	1374416-1
	Black	1374416-2
	White	1374416-3
	Gray	1374416-4
	Orange	1374416-5
	Blue	1374416-6
	Red	1374416-7
	Yellow	1374416-8
	Green	1374416-9
	Violet	1-1374416-0
	Electrical Ivory	1-1374416-1
	Rose	2-1374416-3
	Aqua	2-1374416-4
	Brown	2-1374416-5
	Slate	2-1374416-6

Multimedia Modules for Work Area Outlets

- SVGA 110 termination modules:
 - Supported resolutions:
 - VGA (640 x 480)
 - SVGA (800 x 600)
 - XGA (1024 x 760)
- Features 110-Style termination for easy installation
- Is suitable for use with standard Category 5e or 6 UTP or F/UTP (recommended) cables
 - Can be used where distances between monitor and computer do not exceed:
 - 20 ft with Cat 5e or 6 UTP cable
 - 35 ft with Cat 5e or 6 FTP cable
- Utilizing drain wire for 9th conductor is recommended for use with FTP cables
- Dimensions: 1.180" D x 1.480" W x 0.875" H
- Stuffer caps and hex head stand-off screws included
- Fits SVGA blank SL Series Module, P/N: 1479079
- SVGA screw terminal termination module:
 - Works with VGA and SVGA signals
 - Allows field termination of SVGA cable
 - For distances of up to 150 feet at a resolution of 800 x 600 using standard 5 conductor 26 AWG coaxial video cable
 - Fits SVGA blank SL Series Module, P/N: 1479079
- SVGA - Screw terminal
 - Allows field termination of SVGA cable
 - For distances up to 150 feet
 - Supported Resolutions:
 - 800 x 600
 - Recommended for use with 5 conductor, 26 AWG stranded coaxial video cable
- HDMI modules fit into HDMI blank SL Series module, P/N: 1933686



Figure A



Figure B

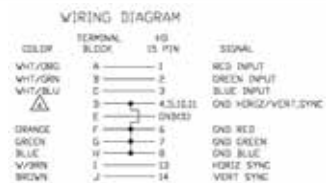
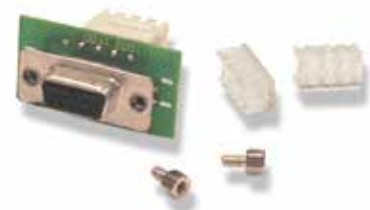


Figure C

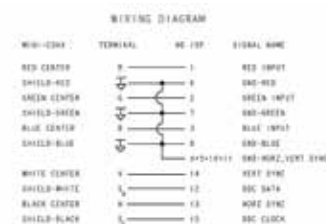


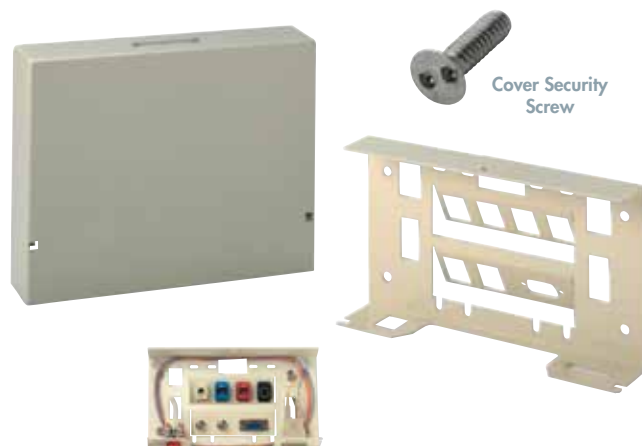
Figure D

Ordering Information

Description	Figure	Part Number
HDMI Adapter, Type A	A	1933635-2
HDMI Adapter Cable Assembly, Type A	B	1933636-2
SVGA Assembly, 110 Termination	C	1479287-2
SVGA Assembly, Screw Terminal Termination	D	1933424-2

Multimedia Security Outlet

- High-capacity outlet
- Accommodates a wide assortment of multimedia inserts
- Well suited for “high-low” (remote monitor) outlet applications in classrooms and training facilities
- Supports up to nine ports of twisted-pair, coax and/or optical fiber connectivity as well as an SVGA or serial module and a duplex optical fiber adapter
- Accepts:
 - All SL Series jacks and MTRJ outlet jacks
 - Duplex optical fiber adapters
 - All multimedia inserts
 - RJ45 SECURE jacks and SECURE optical fiber inserts



Ordering Information

Description	Part Number
Multimedia Security Outlet	1116535-1

Surface Mount Outlet and Accessories

- Provides a convenient and aesthetically pleasing workstation outlet for virtually all network needs
- Capability to install mixed media: coax, fiber and twisted pair
- Simply select the adapter kits for the media being used and install them in the Surface Mount Outlet
- The kit is shipped with matching icons. Additional icons in Chapter 17
- Surface Mount Outlet is available in Almond only.



Ordering Information

Description	Part Number
Surface Mount Outlet Assembly - Top, bottom, label, cover, hardware, 8 blank inserts	557366-1
Blank Insert	557361-1
Surface Raceway Adapter	557685-1
Duplex ST or Duplex SC Insert (Fiber receptacles not included)	1116111-1
Dual ST Bulkhead Adapter Insert (Receptacle included)	557350-1
AMP Communications Outlet Adapter Insert (Requires single-port installation kit and connector insert)	557364-1
Single 110Connect Jack, SL Series or MTRJ Insert (Jack not included)	1116098-1
Dual 110Connect Jack, SL Series or MTRJ Insert (Jacks not included)	557775-1

Suggested Loading Pattern for the Surface Mount Outlet

The application chart is a suggested loading pattern for the Surface Mount Outlet. The Surface Mount Outlet inserts can be configured according to network requirements. The size of the connectors, however, limits some applications. In particular, the corner slots present some loading problems when using larger connectors. Therefore, this application chart was developed to assist in adjacent corner connector configuration. The “X” denotes the suggested loading patterns for the corner slots of the Surface Mount Outlet.

	Dual ST or SC	110Connect, SL Series, or MT-RJ Jacks	Dual 110Connect, SL Series, or MT-RJ Jacks
Dual ST or SC		X	
110Connect, SL Series, or MT-RJ Jacks	X	X	X
Dual 110Connect, SL Series, or MT-RJ Jacks		X	

Surface Mount Modules

- Provide flexible surface mounting of 2, 4 or 6-ports
- Accept AMP-TWIST, SL Series jacks, MTRJ outlet jacks, and SL Series inserts
- Compatible with surface raceway systems and modular furniture raceways
- Modules include label, clear label cover, double-sided foam tape, self-tapping screws, and cable ties
- Modules can be mounted with magnets (purchased separately)
- Dimensions:
 - 2-port: 1.5" H x 3.0" W x 4.0" D
 - 4-port: 1.5" H x 5.6" W x 4.6" D
 - 6-port: 1.5" H x 5.6" W x 4.6" D



Figure A



Figure B

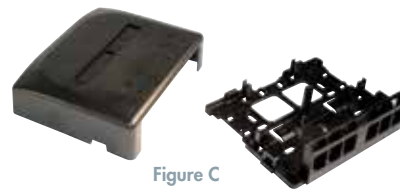


Figure C



Figure D

Ordering Information

Description	Port Count	Figure	Almond	Black	White	Gray	Electrical Ivory	Alpine White
Surface Mount Modules	2	A	1933668-1	1933668-2	1933668-3	1933668-4	1-1933668-1	1-1933668-3
	4	B	1933671-1	1933671-2	1933671-3	1933671-4	1-1933671-1	1-1933671-3
	6	C	1933674-1	1933674-2	1933674-3	1933674-4	1-1933674-1	1-1933674-3
Surface Mount Module Magnets	Pack of 4	D	1933677-1					

12-Port Universal Surface Mount Outlet

- Accepts all SL Series jacks, 110Connect jacks, MTRJ outlet jacks, and SL Series inserts
- Molded numbering for each port
- Uses same labeling and label covers as standard faceplates
- Low profile design
- Features fiber loop storage
- Compatible with most surface raceways
- Mounts to standard NEMA single and double gang surface boxes
- Integrated modular jack holder for terminations
- "Invisible" Icon holes stay hidden until used
- Accommodates up to twelve 4-pair cables



Ordering Information

Description	Almond	Black	White	Gray	Electrical Ivory	Alpine White
12-Port Universal Surface Mount Outlet	1479358-1	1479358-2	1479358-3	1479358-4	1-1479358-1	1-1479358-3
Surface Mount Module Magnets, Pack of 4	1479398-1					

Surface Boxes

- One-piece construction simplifies installation
- Single gang surface box is 1 3/4" deep
- Double gang surface box is 2" deep



Figure A



Figure B

Ordering Information

Footprint	Figure	Almond	Black	White	Gray	Electrical Ivory	Alpine White
Single Gang	A	558251-1	558251-2	558251-3	558251-4	1-558251-1	1-558251-3
Double Gang	B	569499-1	569499-2	569499-3	569499-4	1-569499-1	1-569499-3

Modular Jack Boxes

- Accepts unshielded SL Series jacks, 110Connect jacks and MTRJ outlet jacks
- "Invisible" icon holes remain hidden when not used



Figure A



Figure B



Ordering Information

Description	Port Count	Figure	Almond	Black	White	Gray	Electrical Ivory
Modular Jack Boxes	1-Port	A	1116697-1	1116697-2	1116697-3	1116697-4	1-1116697-1
	2-Port	B	1116698-1	1116698-2	1116698-3	1116698-4	1-1116698-1
Blank Insert for Modular Jack Boxes			1933172-1	1933172-2	1933172-3	1933172-4	1-1933172-1

NOTE: Modular jack boxes do not accept Multimedia inserts. Blank Insert only works with these boxes.

Faceplates for WIREMOLD Raceways

- Designed to be identical to Wiremold 5507 Series Faceplates and will mount in 4049, 5400, and 5500 series device plates and brackets
- Accept all SL Series jacks and multimedia inserts
- "Invisible" icon holes remain hidden if not used



Figure A

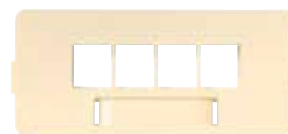


Figure B

Ordering Information

Description	Port Count	Figure	Almond	Gray
Faceplates for WIREMOLD Raceways	3	A	1375050-1	1375050-4
	4	B	1375049-1	1375049-4

WIREMOLD 2A Inserts

- Allows the use of SL Series jacks and inserts in Wiremold raceways, poke-thru service fittings, and power poles
- Accepts up to two SL Series jacks or inserts
- Installation and configuration ease
- Modules feature a front load snap-in design for ease of installation and allowing outlet configuration changes to be made quickly

- To order contact:

The Wiremold Company
60 Woodlawn Street
West Hartford, CT 06110
1-800-621-0049
Fax: 860-232-2062
Web: www.wiremold.com



Ordering Information

Description	Color	Part Number
Wiremold 2A, 2-Port Inserts	Ivory	CM2-U2AMP
	White	CM2-U2AMP-WH
	Black	CM2-U2AMP-BK
	Gray - Steel Raceway	CM2-U2AMP-G
	Light Gray - Aluminum Raceway	CM2-U2AMP-GY

Access Floor Workstation Modules

- Provide power and communications connectivity in raised flooring
- 2, 3, 4, and 5 gang sizes available
- For use with carpet squares
- Load bearing exceeds UL and agency requirements:
 - UL listed, CSA certified
 - UL 514A metallic outlet boxes
 - UL 183 manufactured wiring system
 - CSA C22-2 No. 18-M1987 outlet boxes, conduit boxes and fittings
- Access Floor Workstation Modules shown loaded for reference only
- AFWMs Comply with NEC 300-22(c) requirements for use in environmental air spaces
- Replacement Lids can be easily field changed and are shipped fully assembled
- Five Gang AFWM:
 - Accepts any combination of power and communications
 - Accepts all standard AFWM Faceplates
 - Outlets flip up above floor for easy access
 - Large cable opening enables disassembly and relocation without re-termination of communications connectors
 - Suitable for use in non-environmental air spaces
 - Requires the use of enclosure kit 1479449 to comply with NEC 300-22(c)
- Four Gang AFWM:
 - Accepts two duplex power receptacles or duplex mounting straps, and two standard FLEX-MODE faceplates
 - Shallow profile provides easy access to connections
- Three Gang AFWM:
 - Accepts any combination of power and communications
 - Accepts all standard AFWM Faceplates
- Two Gang AFWM:
 - Accepts any combination of power and communications
 - Each gang accepts a duplex electrical receptacle or duplex mounting strap for communications connectors



Figure A



Figure B



Figure C

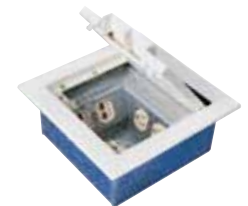


Figure D

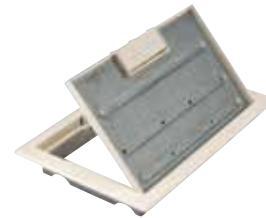


Figure E



Figure F

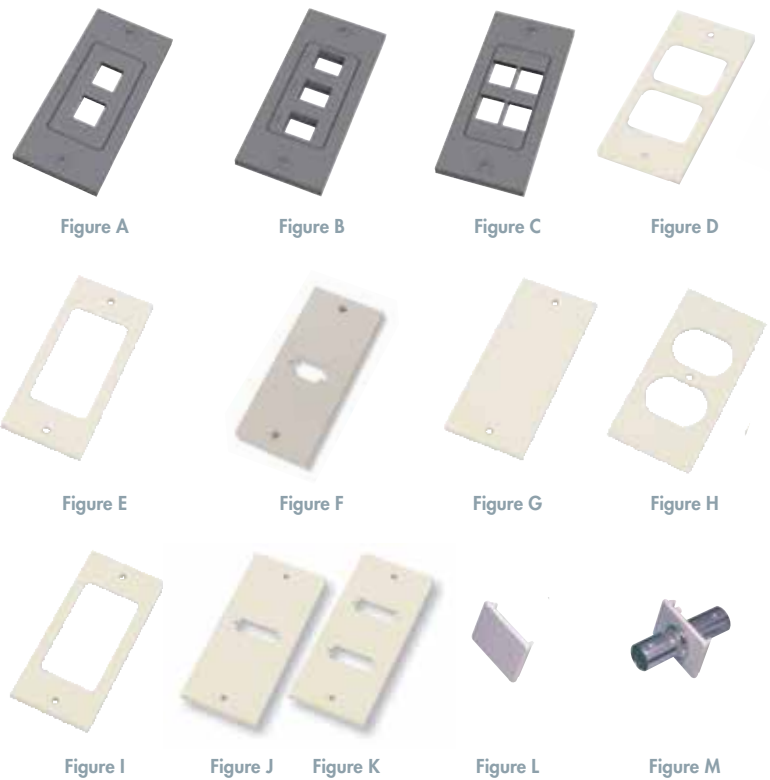


Ordering Information

Description	Footprint	Height	Width	Raised Floor Depth (Floor Height Measured From Top of Raised Floor to Top of Main Floor Surface)	Figure	Almond	Black	Gray
Access Floor Workstation Modules	5 Gang	8 in	12 in	5.5 in	A	557601-1	557601-3	557601-4
	4 Gang	8 in	12 in	2.6 in	B	406376-1	406376-3	406376-4
	3 Gang	7.375 in	7.375 in	5.5 in	C	558716-1	558716-3	558716-4
	2 Gang	7.375 in	7.375 in	3.5 in	D	558718-1	558718-3	558718-4
Replacement Lid for AFWMs	2 and 3 Gang	–	–	–		558717-1	558717-3	558717-4
	4 Gang	–	–	–	E	406861-1	406861-3	406861-4
Replacement Bezel for AFWMs	4 and 5 Gang	–	–	–		769046-1	769046-3	769046-4
						Galvanized Steel		
Enclosure Kit for AFWMs	5 Gang	–	–	6.0 in	F	1479499-1		

AFWM Flush Faceplates

- Include faceplate and mounting hardware
- For 3 and 5 Gang Access Floor Workstation Modules only
- 2, 3, and 4-port faceplates accept:
 - Inserts for modular jack panels and standard FLEX-MODE faceplates
 - 110Connect or SL Series modular jacks
 - MTRJ outlet jacks
- Blank AFWM faceplates may also be cut or punched for custom mounting options



Ordering Information

Description		For Use With	Figure	Almond	Black	White	Gray
Communications Outlet Faceplates	2-Port	1 110Connect, SL Series or MTRJ Outlet Jacks	A	1375126-1	–	1375126-5	1375126-4
	3-Port	1 110Connect, SL Series or MTRJ Outlet Jacks	B	1375127-1	–	1375127-5	1375127-4
	4-Port	SL Series or MTRJ Outlet Jacks	C	1375128-1	–	1375128-5	1375128-4
	ACO	One Dual-port Low Profile ACO Installation Kit	D	769021-1	–	769021-5	769021-4
	FLEX-MODE	One Standard FLEX-MODE Faceplate	E	769020-1	–	769020-5	769020-4
	SVGA	Accepts one SVGA assembly (not included)	F	1499720-1	–	1499720-5	1499720-4
	Blank		G	557655-1	–	557655-5	557655-4
	Duplex Optical Fiber Adapter	One SC Duplex or Dual ST Two SC Duplex or Dual ST	J K	569646-1 569648-1	– –	569646-5 569648-5	569646-4 569648-4
Power Outlet Faceplates	Duplex Power Faceplate	One "Double D" Duplex Receptacle or Duplex Mounting Strap	H	769028-1	–	769028-5	769028-4
	Decorator Receptacle	One Decorator-Style Receptacle or Decorator Mounting Strap	I	769016-1	–	769016-5	769016-4
Inserts	Blank Insert		L	558856-2	558856-1	–	–
	BNC		M	558861-2	558861-1	–	–

Concrete Form Boxes from Barthelmes Mfg. Co.

- Accept Access Floor Workstation Modules as listed
- Allows for installation of Access Floor Workstation Module in slab-on grade applications
- AFWM boxes are purchased separately
- Ordering Contact:
Barthelmes Mfg. Co.
 15 Cairn Street
 Rochester, NY 14611-2491
 Telephone: 585-328-8140
 Web: www.barthelmes.com



Ordering Information

Accepts	OD (in Inches)	Barthelmes Part Number
4 & 5 Gang AFWMs	18" W x 18" D x 6.3" H	U135806
2 & 3 Gang AFWMs	18" W x 18" D x 6.3" H	U135820
4 Gang AFWMs	18" W x 18" D x 3.5" H	U135830
	18" W x 18" D x 2.75" H	U135840

NOTE: AFWM boxes are purchased separately.

Desktop Monuments

- Power Monuments:
 - Provide access to duplex power outlet at the desktop
 - Eliminates the need to feed power cables behind or through desks
 - Supplied with an 8' (2.4 m), 3-prong power cord for connection to existing electrical outlets
- Voice/Data Monuments:
 - Accepts standard FLEX-MODE faceplates
 - Horizontal cabling can be connected directly to SL Series Modular Jacks (recommended for Category 5e applications)
- Attach to any desktop from 0.90" - 1.78" (22.9 mm - 45.2 mm)
- No special tools required to attach, simply place the monument onto the edge of the desktop and tighten the integrated thumb screw
- UL Listed and CSA Certified



Figure A



Figure B

Ordering Information

Description/Color	Color	Figure	Part Number
Power Monument, 15 Amp	Black	A	556222-3
Voice/Data Monument Empty Housing (requires FLEX-MODE Faceplate)	Black	B	1116360-3

FLEX-MODE Modular Furniture Faceplate Kits

- FLEX-MODE faceplates:
 - Accept all SL Series jacks, MTRJ outlet jacks, 110Connect jacks, or SL Series inserts
 - Compatible with Telecommunications furniture outlet openings as specified in TIA/EIA-569-B standard
- 110Connect 4-port modules:
 - Printed circuit board assemblies include 4 jacks
 - Ideal for thin panels
- SL Series faceplates:
 - Accepts unshielded SL Series jacks, MTRJ outlet jacks and SL Series inserts
 - "Invisible" icon holes stay hidden till used



Figure A



Figure B



Figure C



Figure D

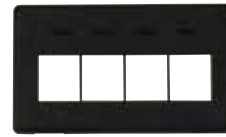
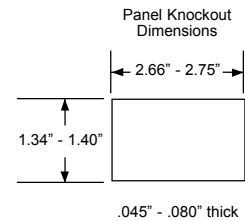


Figure E



Ordering Information

Description	Port Count	Wiring	Figure	Almond	Black	Gray
Blank Plate	–	–	A	558471-2	558471-1	558471-4
FLEX-MODE Flush Faceplate	2	–	B	558106-2	558106-1	558106-4
	3	–	C	558107-2	558107-1	558107-4
Category 5e, 110 Connect 4-Port Module	4	T568A/T568B	D	1116580-2	1116580-1	1116580-4
SL Series	4	–	E	1933134-2	1933134-1	1933134-4

SL Series Furniture Outlets

- Accept up to 4 unshielded SL Series jacks, MTRJ outlet jacks and SL Series multimedia inserts
- Two bases adapt to a wide range of hole sizes
- Tabs on base fold over and crimp to furniture raceway cover
- "Invisible" icon holes stay hidden until used

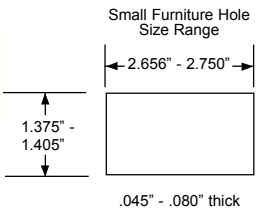


Figure A

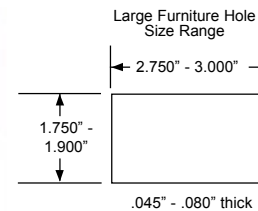


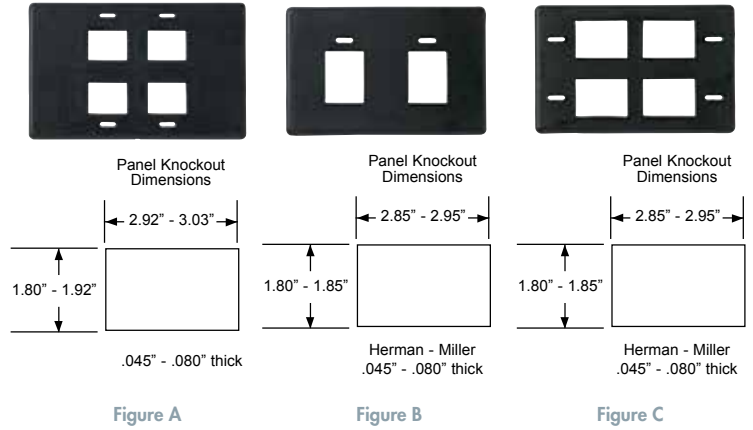
Figure B

Ordering Information

Description		Figure	Almond	Black	White	Gray
SL Series Furniture Outlet	Small opening	A	1375005-1	1375005-2	1375005-3	1375005-4
	Large opening	B	1375006-1	1375006-2	1375006-3	1375006-4

Faceplates for HERMAN MILLER Furniture

- Flush faceplates:
 - Accepts unshielded 110Connect jacks, all SL Series jacks and MTRJ outlet jacks
 - Jacks fit flush with front of faceplate
 - No backup plate required
- Standard faceplates:
 - Accepts unshielded 110Connect Jacks, all SL Series Jacks, MTRJ Outlet Jacks, and 110Connect and SL Series Multimedia Inserts
 - May require backup plates depending on furniture style

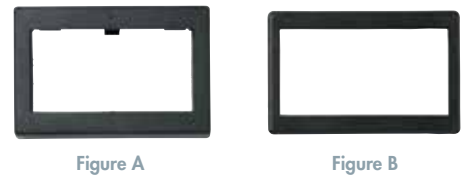


Ordering Information

Description		Port Count	Figure	Almond	Black	Gray
Faceplate for HERMAN MILLER Furniture	Flush	4	A	558357-2	558357-1	558357-4
	Standard	2	B	569127-2	569127-1	569127-4
		4	C	558191-2	558191-1	558191-4

Extenders & Adapters for Furniture Faceplates

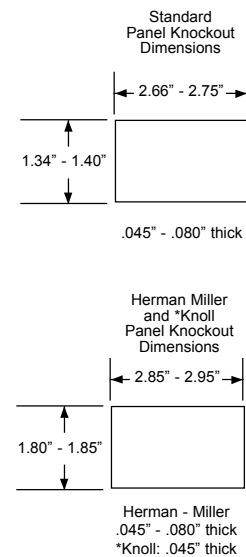
- Extenders:
 - Use when depth of furniture panel is limited
 - Raise outlet face approximately 3/4" above surface of raceway
- Adapters are used to adapt standard FLEX-MODE Electrical Faceplates to other hole sizes



Ordering Information

Description		Figure	Almond	Black	Gray
HERMAN MILLER	Standard Extender	A	1933468-2	1933468-1	1933468-4
	Extender	A	558488-2	558488-1	558488-4
	Adapter	B	558493-2	558493-1	558493-4
KNOLL (Prior to 1992)	Extender	A	558489-2*	558489-1*	558489-4*
	Adapter	B	558492-2*	558492-1*	558492-4*

* Note: Used to adapt standard FLEX-MODE Electrical faceplates to Knoll furniture manufactured prior to 1992.



FLEX-MODE Modular Furniture Faceplate Accessories



Figure A



Figure B



Figure C



Figure D

Ordering Information

Description	For use with	Figure	Part Number
Backup Plate	WESTINGHOUSE Furniture	A	608046-1
	HERMAN MILLER ACTION OFFICE 2 and ETHOSPACE Furniture (1991 or later)	B	608440-1
Accessory Clip	HERMAN MILLER SERIES 3 power opening	C	557751-1
	HERMAN MILLER Furniture (before 1991)	D	608441-1



www.commscope.com

Visit our website or contact your local CommScope representative for more information.

© 2015 CommScope, Inc. All rights reserved.

All trademarks identified by ® or ™ are registered trademarks or trademarks, respectively, of CommScope, Inc.

This document is for planning purposes only and is not intended to modify or supplement any specifications or warranties relating to CommScope products or services.

CA-310254.1-AE (10/15)