

COMMSCOPE®

## XDS Cabinet and Rack System

Featuring AMP NETCONNECT® and KRONE® product portfolios



2015 PRODUCT CATALOG | 3RD EDITION

# XDS Cabinet and Rack System

## XDS Server Racks

### XDS Server Racks

CommScope's XDS Server Racks are designed for high density data centers with advanced cooling, cable management and power distribution features that keep critical servers and network equipment operating nonstop.

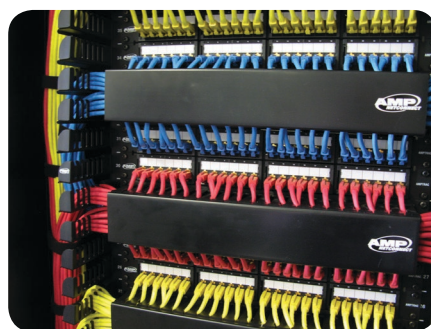
#### Features

- Integrated Vertical Cable Managers for 800 Series Racks – help to maintain the proper bend radius of the patch cords.
- Material: cold rolled steel, compliant with RoHS standard. The frame is made of 2mm powder coated steel, ensuring a strong, rigid, durable and rustproof cabinet.
- Front door: Curved steel door with 70% perforation, 4.8mm diameter perforation. Lockable for security.
- Rear doors: 2 flat panes perforated steel doors, 4.8mm diameter perforation. Lockable turn lock.
- Adjustable mounting rails. Front and rear mounting rails adjustable in quarter-inch increments.
- Removable and reversible front door; allow the door to open from either the left or the right.
- Removable side panels.
- Heavy duty casters to help position the rack to final position. Adjustable leveling feet to secure the position.
- Cable routing from top and bottom. Cable entries covered with removable blanking plates.
- Static load up to 1000 Kg.
- Grounding system: all metallic parts are bonded with grounding cable kits.
- Modular knocked-down/flat-packed units. To be assembled on-site to save storage space and ease of transportation.
- Accessory: 50 pcs of M6 screws, cage nuts and plastic washers.
- Color: Black powder coated (RAL9005).



#### Ordering Information

Description	UH	Standard Rack 600 Series (W x D)			Standard Rack 800 Series (W x D)	
		600x600	600x800	600x1100	800x800	800x1100
Standard Rack 42U	42	1427543-1	1427490-1	1427560-1	1427491-1	1427561-1
Standard Rack 42U, w/o Side Panels	42	1427543-2	1427490-2	1427560-2	1427491-2	1427561-2

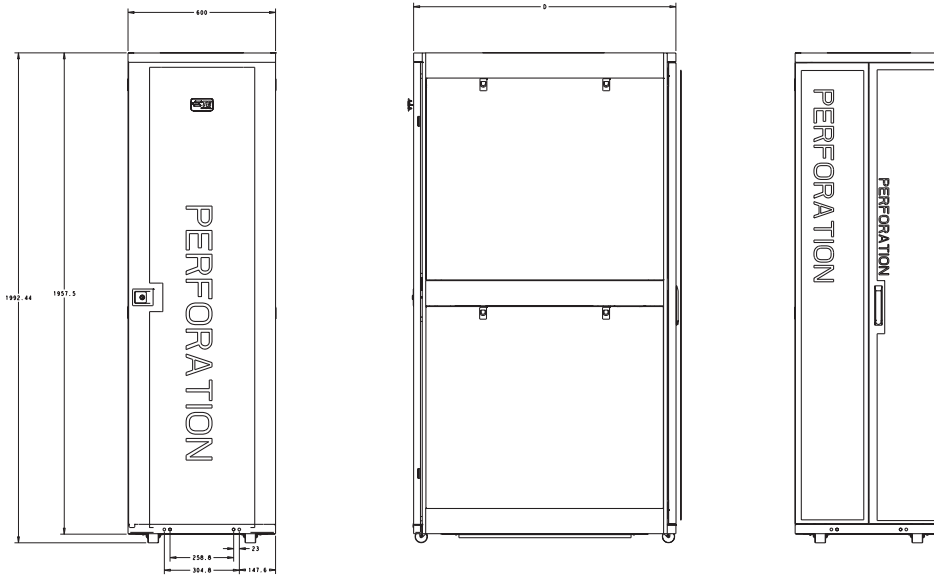


Vertical Cable Managers

# XDS Cabinet and Rack System

## XDS Server Racks

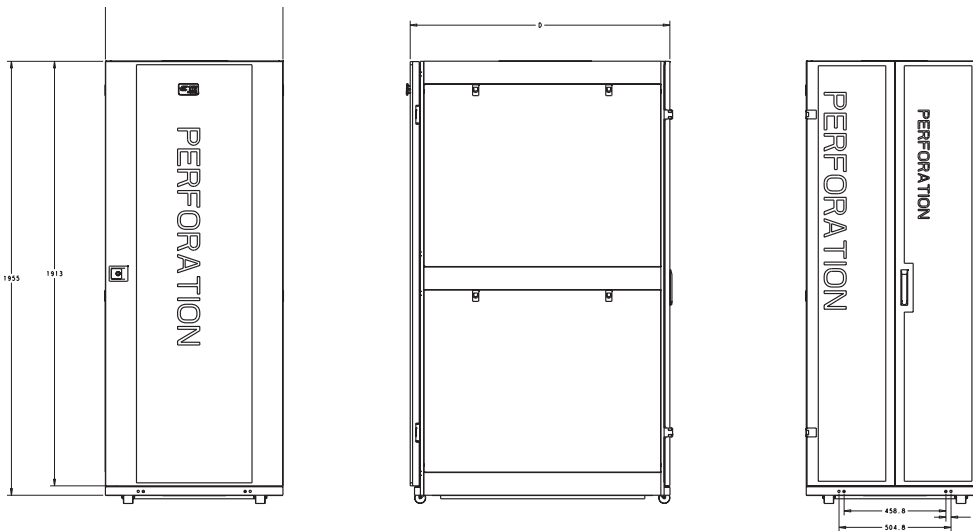
### Curved Perforated Door, 600 Series



#### Product Selection

Description	Standard Rack 600 Series (Width x Depth)		
	600 x 600	600 x 800	600 x 1100
Net Weight (with side panels) - Kg	101	118	135
Net Weight (without side panels) - Kg	82	90	105
Dimension (W x D x H) - mm	600 x 600 x 1992	600 x 800 x 1992	600 x 1100 x 1992

### Curved Perforated Door, 800 Series



#### Product Selection

Description	Standard Rack 800 Series (Width x Depth)	
	800 x 800	800 x 1100
Net Weight (with side panels) - Kg	125	150
Net Weight (without side panels) - Kg	95	110
Dimension (W x D x H) - mm	800 x 800 x 1992	800 x 1100 x 1992

### Thermal Kit

#### Features

- Extractor fans to improve removal of warm air from the rack
- Material: cold rolled steel plate, 1.5mm. Complies with RoHS standard.
- UL compliant fan units
- Reliable AC Motor Construction.
- Air flow 10 cubic meter / min
- 1.5 m power cord plug. Other lengths available on request
- 110/115V or 220/240VAC, 50-60 Hz

#### Ordering Information

Description	Part Number
Ventilating Fan Set 4x4" Dia. for 600x1100 XDS Rack	1427575-1
Ventilating Fan Set 4x4" Dia. for 800x1100 XDS Rack	1427575-2

### Vented Shelf 400mm Deep

#### Features

- Supports equipment up to 400mm deep, with 1U height
- Compatible with 19" Racks. Mounting hardware included
- Material: cold rolled steel plate, 1.5mm complies with RoHS standard
- Up to 15 kg load capacity, able to take the weight of equipment such as Modem, Power Adapter etc

#### Ordering Information

Description	Part Number
Vented Shelf 400 mm Depth	1427509-1





## Fixed Shelf

### Features

- Fixed and Heavy Duty Shelves are ideal for heavy equipment
- Compatible with 19" Racks, 1U height. Mounting hardware included
- Material: cold rolled steel plate, complies with RoHS standard
- 80 Kg load capacity for Fixed Shelf series, 1.5mm thickness
- Compatible with 800 and 1100 deep cabinets



### Ordering Information

Description	Part Number
Fixed Shelf, for 1100mm Depth Racks	1427573-1
Fixed Shelf, for 800mm Depth Racks	1427493-1

## Sliding Shelf

### Features

- Slides out for easy access to equipment
- Compatible with 19" Racks, 1U height. Mounting hardware included
- Material: cold rolled steel plate, 1.5mm complies with RoHS standard
- 40 Kg load capacity
- Compatible with 800 and 1100 deep cabinets



### Ordering Information

Description	Part Number
Sliding Shelf, for 1100mm Depth Racks	1427574-1
Sliding Shelf, for 800mm Depth Racks	1427494-1

### Cable Management

#### Features

- Mounted on the top of XDS Racks to manage cable routing between racks
- Material: cold rolled steel plate, 1.5mm complies with RoHS standard
- Black powder coated

#### Ordering Information

Description	Part Number
Rack Top Cable Trough	1427578-1



### Brush Panels

#### Features

- Blank panels with brushed opening
- Allow cable to route to the rear of the rack while reducing by-pass cold air
- Material: cold rolled steel plate, 1.5mm compliant with RoHS standard.
- Made from black powder coated steel

#### Ordering Information

Description	Part Number
Brush Panel – 1U	1427577-1



### 1U Cable Management Module

#### Features

- Cable Manager to facilitate proper patch cord management
- Material: cold rolled steel plate, 1.5mm compliant with RoHS standard
- Made from black powder coated steel

#### Ordering Information

Description	Part Number
1U Cable Management Module	1427632-1



## Mounting Hardware

### Features

- Hardware to attach panels and equipment to racks and cabinets
- M6 screws, Cage nuts and Washer kits
- Package quantity: 50 sets

### Ordering Information

Description	Part Number
M6 Screws, cage nuts and washers, (50 sets per pack)	1427495-1



## CommScope Enterprise Networks Regional Sales Headquarters:

### North America

Greensboro, NC, USA  
Ph: +1-800-553-0938  
Fx: +1-717-986-7406

### Latin America

Buenos Aires, Argentina  
Ph: +54-11-4733-2200  
Fx: +54-11-4733-2282

### EMEA

KesselLo, Belgium  
Ph: +32-16-35-1321  
Fx: +32-16-35-2188

### SAARC

Bangalore, India  
Ph: +91-80-4011-5000  
Fx: +91-80-4011-5030

### Asia

Hong Kong, China  
Ph: +852-2735-1628  
Fx: +852-2735-1625

### Pacific

Sydney, Australia  
Ph: +61-2-8748-9500  
Fx: +61-2-9748-8487

## CommScope Enterprise Networks in ASIA:

### China

Ph: +86-400-820-6015

### Hong Kong

Ph: +852-2735-1628  
Fx: +852-2735-1625

### Indonesia

Ph: +62-21-2929-3800  
Fx: +62-21-2929-3899

### Japan

Ph: +81-44-844-8071  
Fx: +81-44-844-8732

### Korea

Ph: +82-2-3415-4551  
Fx: +82-2-3486-1787

### Malaysia

Ph: +603-7806-3055  
Fx: +603-7805-2831

### Philippines

Ph: +63-2-988-9400  
Fx: +63-2-846-6180

### Singapore

Ph: +65-6590-5049  
Fx: +65-6482-1012

### Taiwan

Ph: +886-2-8768-2788  
Fx: +886-2-8768-3469

### Thailand

Ph: +66-2-834-6200  
Fx: +66-2-955-0513

### Vietnam - HCMC

Ph: +84-8-3823-8473  
Fx: +84-8-3823-8533

### Vietnam - Hanoi

Ph: +84-4-6277-9651  
Fx: +84-4-6277-9655



[www.commscope.com](http://www.commscope.com)

Visit our website or contact your local CommScope representative for more information.

© 2015 CommScope, Inc. All rights reserved.

All trademarks identified by ® or ™ are registered trademarks or trademarks, respectively, of CommScope, Inc.

This document is for planning purposes only and is not intended to modify or supplement any specifications or warranties relating to CommScope products or services.

CAT-314966.4-HK (12/15)