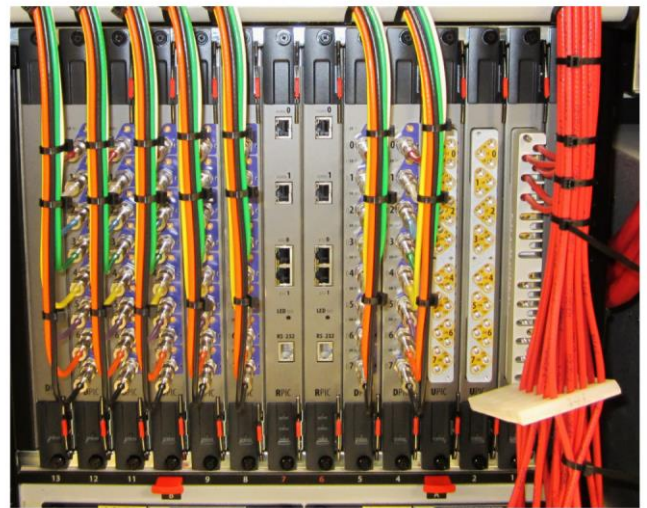


CER CMTS Deployment Services ARRIS Global Services

SERVICE BENEFITS:

To ensure top quality Converged Edge Router (CER) or CMTS deployment, the people who design, engineer, and install these systems need to be at the top of their game and on top of best practices and industry standards. ARRIS Global Services maintains a global network of highly educated and experienced designers, drafters, engineers and technicians who can ensure the full potential of the CER or CMTS deployment.

- **Modular Services** – Customize a deployment from a complete turnkey engagement to individual services that complement your in-house skill sets.
- **Experience and Expertise** - Quickly launch new services with confidence.
- **Reduced Overhead** - Minimize the number of fulltime employees required and associated benefits, space and other overhead.
- **Professional Program Management** – Ensures multi-market, national or global projects are completed consistently, on time and in budget.
- **Seamless Integration** – Deployed CER and CMTS systems are not just “plugged in” but optimized to work with upstream and downstream network elements.



SERVICE OVERVIEW:

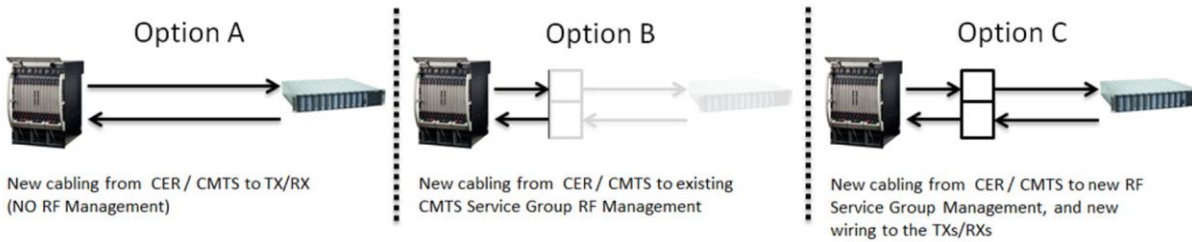
ARRIS is the global leader when it comes to DOCSIS edge platform deployments. No other company in the world has more deployment experience than ARRIS Global Services. ARRIS CER and CMTS Deployment Services provide service providers the assurance that installation of their CER or CMTS will be on time and to the highest standards in the industry. These services cover:

- **Planning and Design** – The physical layer plan of what ports are assigned and how they are wired.
 - **Configuration** – Development of site-specific configuration of network elements.
 - **Installation** – Physical tasks like rack, stack and wiring, at the deployment site.
 - **Commissioning and Testing** – Powering up and verifying the systems.
 - **Service Group Testing** – Verify services delivery through the deployed unit.
 - **Migration Services** – Engineering and technicians to execute the migration Methods of Procedure (MOP).
 - **Wreck out and Decommissioning** – Removal of abandoned materials and testing, packing and storage or redeployment of replaced elements.
-

Assumptions and Prerequisites

- Customer will provide contact and deployment information.
- Orders which total over \$50,000 USD will require a signed statement of work, prior to work being scheduled.

Installation Options for Wiring



CER CMTS Deployment Services

To order these services, contact your sales representative.

ORDERING INFORMATION

Part Number	Description
Plan and Design	
782241	Per Site CER CMTS Physical Site Survey
782242	Per CER CER RF Service Group Design
782243	Per CMTS CMTS RF Service Group Design
782244	Per CER CER Site Specific Configuration
782245	Per CMTS CMTS Site Specific Configuration
Implement	
782248	Per CER / CMTS - Rack Stack and Wire / Option A - 24 nodes or less
782249	Per CER / CMTS - Rack Stack and Wire / Option B - 24 nodes or less
782250	Per CER / CMTS - Rack Stack and Wire / Option C - 24 nodes or less
782251	Per CER / CMTS - Rack Stack and Wire / Option A - 25 to 48 nodes
782252	Per CER / CMTS - Rack Stack and Wire / Option B - 25 to 48 nodes
782253	Per CER / CMTS - Rack Stack and Wire / Option C - 25 to 48 nodes
782254	Per CER / CMTS - Rack Stack and Wire / Option A - 49 to 72 nodes
782255	Per CER / CMTS - Rack Stack and Wire / Option B - 49 to 72 nodes
782256	Per CER / CMTS - Rack Stack and Wire / Option C - 49 to 72 nodes
782257	Per CER / CMTS - Rack Stack and Wire / Option A - 73 nodes or more
782258	Per CER / CMTS - Rack Stack and Wire / Option B - 73 nodes or more
782259	Per CER / CMTS - Rack Stack and Wire / Option C - 73 nodes or more
782260	Per CER / CMTS - Run and Land DC Cables on BDFB
782261	Per CER - CER Commissioning and Service Group Testing
782262	Per CMTS - CMTS Commissioning and Service Group Testing
782263	Per CER / CMTS - CER CMTS Migration Support - CMTS Technician
782264	Per CER / CMTS - CER CMTS Migration Support - Wire Technician
782265	Per CMTS - CMTS - Decomm Cable Mining
782266	Per CMTS - CMTS - Decomm Equipment Recovery

Other product/region performance improvement programs available upon request.

IMPORTANT NOTICE: THIS DATA SHEET IS FOR INFORMATION PURPOSES ONLY AND REMAINS SUBJECT TO CHANGE BY ARRIS UNLESS AND UNTIL A FIRM ORDER FOR SERVICES IS ACKNOWLEDGED AND ACCEPTED BY ARRIS SUBJECT TO ARRIS STANDARD TERMS AND CONDITIONS WHICH WOULD FORM THE BASIS OF AGREEMENT BETWEEN THE PARTIES.

©ARRIS Enterprises, Inc. 2014 All rights reserved. No part of this publication may be reproduced in any form or by any means or used to make any derivative work (such as translation, transformation, or adaptation) without written permission from ARRIS Enterprises, Inc. ("ARRIS"). ARRIS reserves the right to revise this publication and to make changes in content from time to time without obligation on the part of ARRIS to provide notification of such revision or change. ARRIS and the ARRIS logo are all trademarks of ARRIS Enterprises, Inc. Other trademarks and trade names may be used in this document to refer to either the entities claiming the marks and the names of their products. ARRIS disclaims proprietary interest in the marks and names of others.

©ARRIS Enterprises, Inc. 2014 All rights reserved. No part of this publication may be reproduced