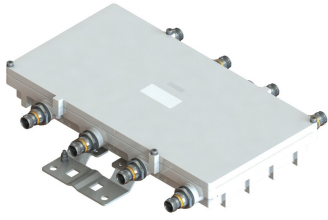


E14V00P58



Interference Mitigation Filter with pass band 2575-2615 MHz

- New 4.3-10 connectors for improved PIM performance and size reduction

Product Classification

Product Type Interference mitigation filter

General Specifications

Modularity 4-Quad

Mounting Pipe Hardware Band clamps (2)

RF Connector Interface 4.3-10 Female

RF Inputs, quantity 4

RF Outputs, quantity 4

Dimensions

Height 52 mm | 2.047 in

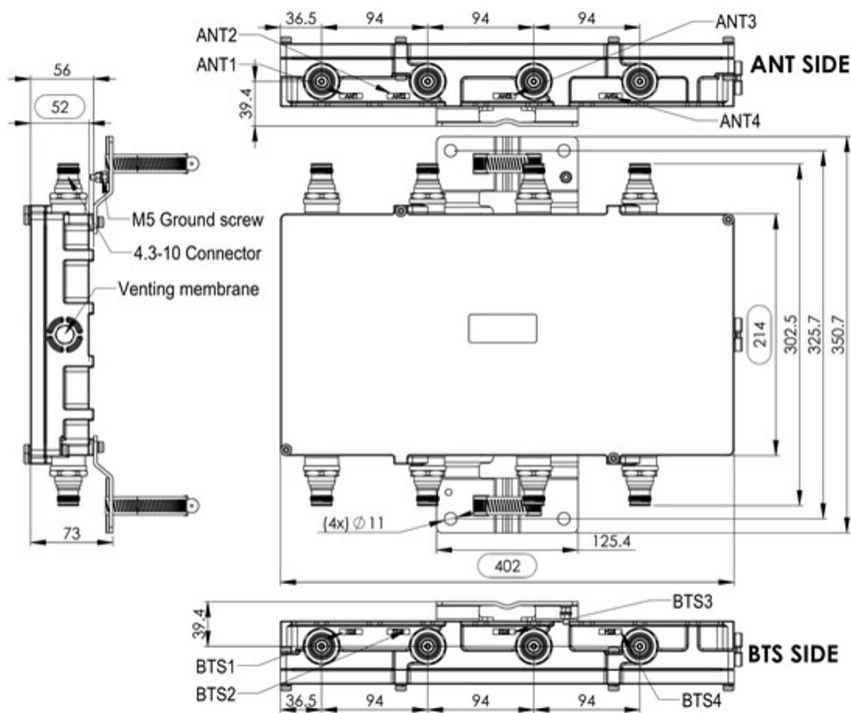
Width 214 mm | 8.425 in

Depth 402 mm | 15.827 in

Ground Screw Diameter 5 mm | 0.197 in

Outline Drawing

E14V00P58



Electrical Specifications, dc Power/Alarm

dc/AISG Pass-through Path	No dc/AISG pass-through
Lightning Surge Current	5 kA
Lightning Surge Current Waveform	8/20 waveform

Electrical Specifications, Band Pass

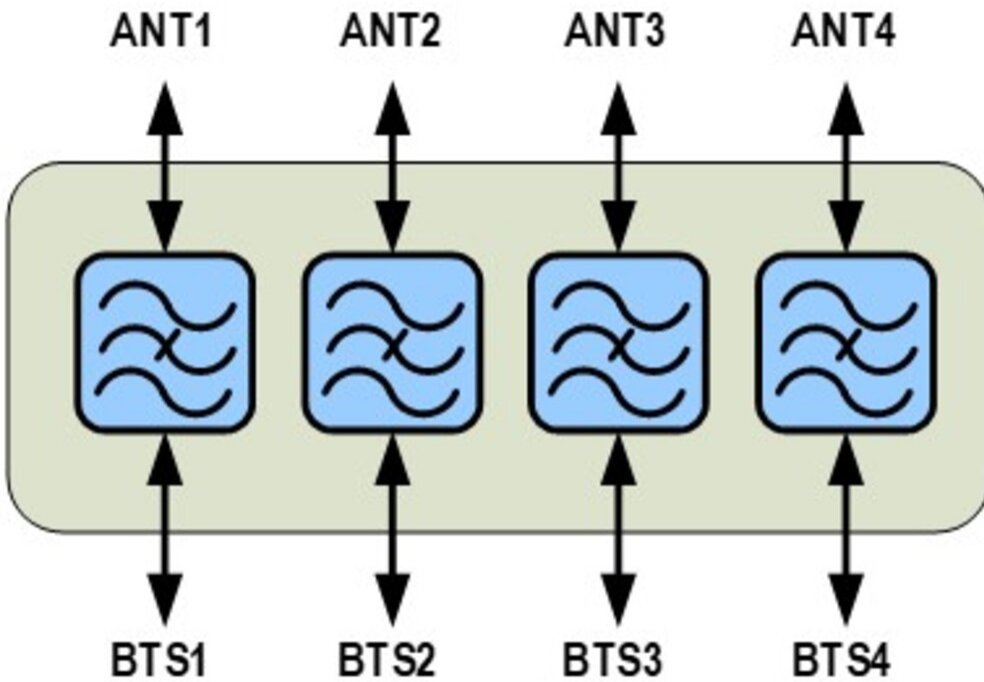
Frequency Range, MHz	2575–2615
Insertion Loss, typical, dB	0.5
Return Loss, typical, dB	20
Input Power, RMS, maximum, W	250
Input Power, PEP, maximum, W	1000
3rd Order PIM, typical, dBc	-150
3rd Order PIM Test Method	2 x 20 W CW tones

Electrical Specifications, Band Reject

Frequency Range, MHz	2500–2570	2620–2690
Attenuation, minimum, dB	38	38

Block Diagram

E14V00P58



Environmental Specifications

Operating Temperature	-40 °C to +55 °C (-40 °F to +131 °F)
Ingress Protection Test Method	IEC 60529:2001, IP67

Packaging and Weights

Volume	4.5
Weight, net	6.8 kg 14.991 lb
Weight, without mounting hardware	6.3 kg 13.889 lb