



FTTH Façade Solution

A complete solution for FTTH façade applications

COMMSCOPE®

Making formerly impossible deployments possible

CommScope's new Facade Solution technology speeds network rollouts in areas where underground work is difficult or impossible. Using cables and terminals installed on facades, our Facade Solution allows low-impact deployments in historic or protected urban environments. In low-density or rural areas, Facade Solution allows providers to defer CAPEX and invest gradually as the take rate grows.

Effective FTTH deployment alternatives

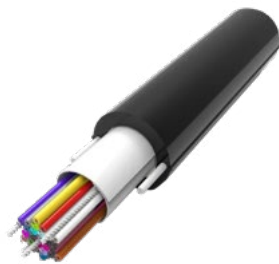
- Villages and low-density urban areas where facade installations are allowed
- Historic areas where civil work is forbidden
- Areas with low take rates and preferred low initial CAPEX and deferred investments

CommScope's complete FTTH facade solution brings together advanced, patented technologies and proven, high performance standards.



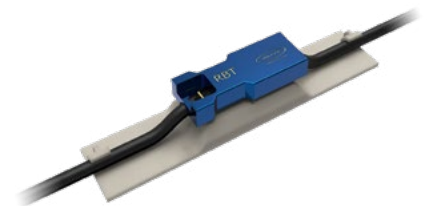
The new NOVUX™ SEC closure

- Design optimized for building façade applications
- Connects as many as six customers and two branches
- Agnostic to connectivity technologies (splice, connector, field-installable connector) for agility and flexibility



New retractable façade cable solution

- Advanced cable stripping technology
- Innovative water blocked cable with fiber pull-back option



New cable-stripping wedge

- Designed for simplicity and full fiber protection
- Easy, fast, controlled stripping of retractable cable



Bringing agility and flexibility to FTTH deployments

[Click on a product to learn more...](#) ↩



1

Tenio



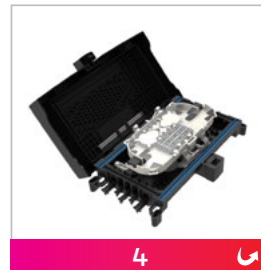
2

SCILA and B



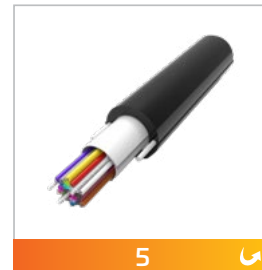
3

Compact drop closure



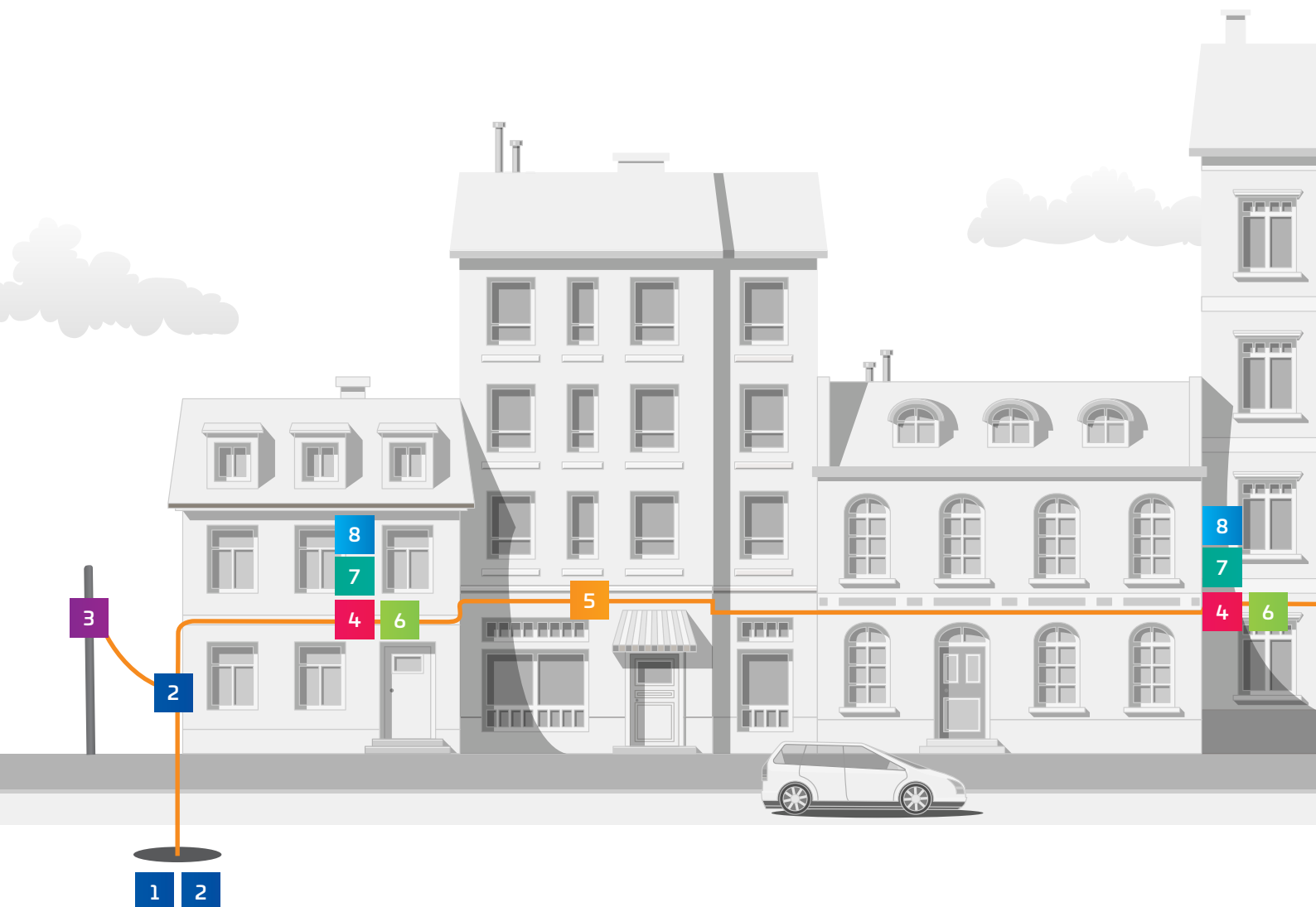
4

NOVUX™ SEC



5

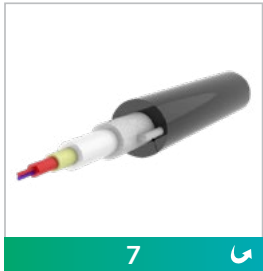
Retractable cable and cable stripping wedge





6 ↻

Window cut protection clip



7 ↻

Indoor/outdoor drop



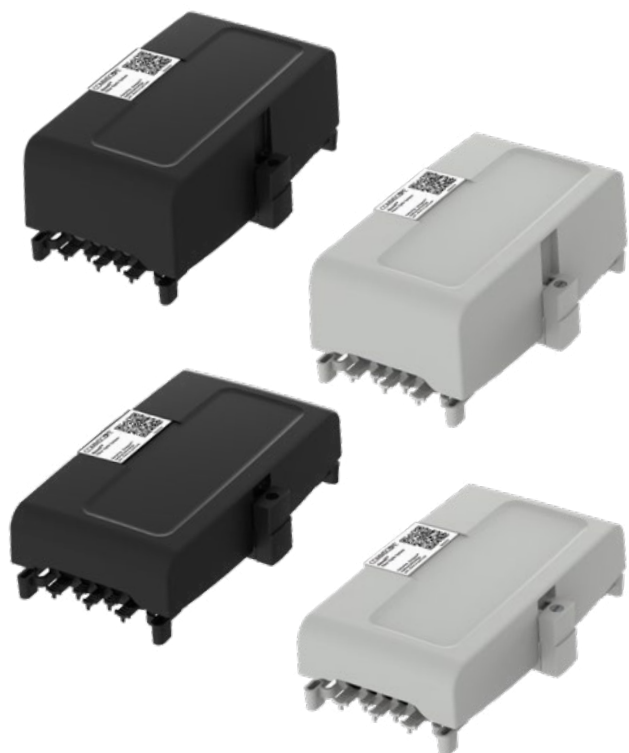
8 ↻

HFTP wall outlet





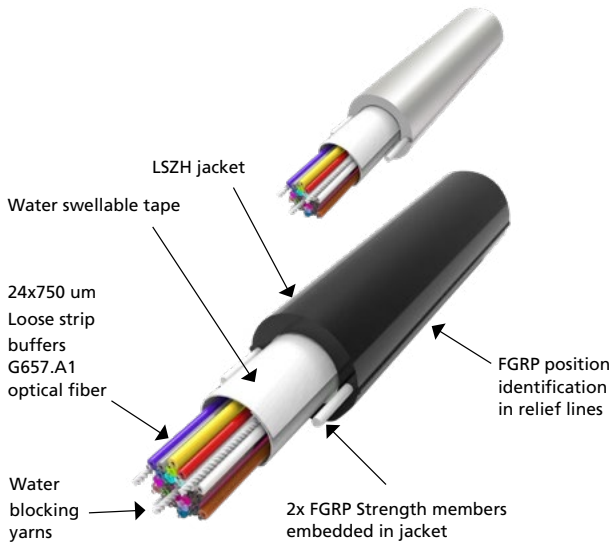
New CommScope technology—for a complete Façade Solution



The new NOVUX™ SEC closure— optimized design for façade applications

- Brings agility and flexibility to deployments
- Concealment with gray and black colors
- Identification plate for either QR code or customer logo
- QR code links installers to CommScope cTrak® app for one-click access to all product information

New retractable façade cable— purpose built for horizontal mounting on a building’s outer façade



760248049 | C-024-RD-8F-M24BK-08D

- Cable may be partially opened and single fibers retracted
- Fibers can be spliced in the NOVUX SEC closure, or routed to the indoor fiber wall outlet
- Dielectric indoor/outdoor distribution cable with loose buffer construction
- 24 fiber, G657.A1 and 750 µm loose strip buffers
- Outer jacket—black or white, designed for outdoor use
- Outer diameter: 9.2 mm

Tools and accessories

760243422 | SEC-CABLE-CLIP-01
NOVUX SEC closure, window-cut protection clip



- Wrap-around design for easy installation with snap-fit and living hinge
- May be reused with rubber sealing technology
- Black and gray colors
- UV-resistant material
- IP55 and IK07 ratings



760249086 | SEC-WINDOW-CUT-TOOL-01
NOVUX SEC closure, cable stripping wedge

- Provide easy, fast, controlled stripping of retractable cable
- Fully optimized for Ripley RBT riser tool #81315
- Proven technology in actual deployment and environmental situations

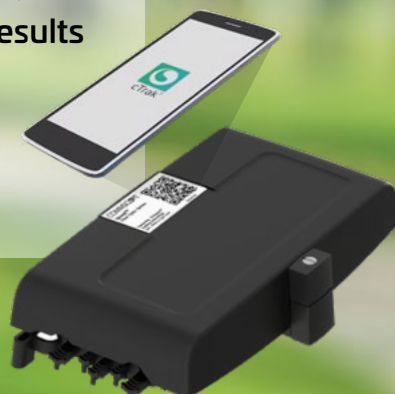
[Watch video](#)

CommScope's cTrak® app

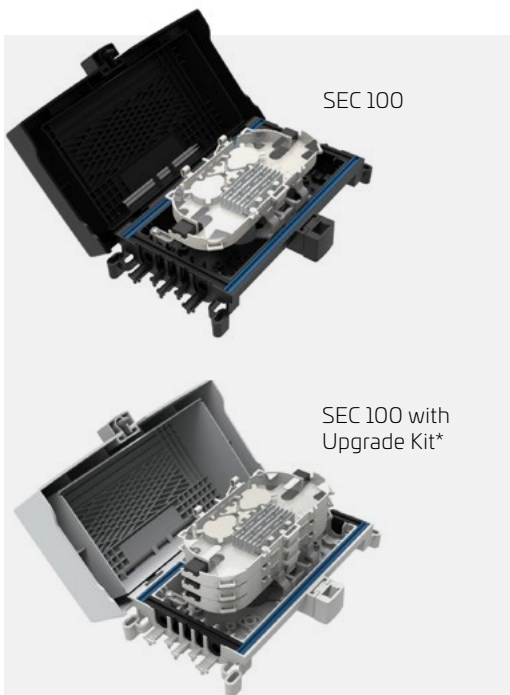
cTrak® provides product specifications, installation instructions and videos, schematics, and test results

[Get the app](#)

[Watch video](#)



NOVUX™ SEC closure specifications and ordering information



Specifications	
Orientation	In-line
Connectivity technology	Splice/Patch
Splice capacity (SMOUV 45 type)	18-54 splices
Adapters	4x SC/APC or 2x LC/APC Duplex
Splitter quantity	As many as 1 per tray
Feeder cable type	Retractable cable
Feeder port size	8-12 mm (rubber), 0.32 - 0.47 inch
Feeder port quantity	2
Branch port size	8-12 mm (rubber), 0.32 - 0.47 inch
Branch port quantity	2
Drop port size, Single	3-7 mm (0.12 - 0.28 inch) pre-connectorized cables 3-6 mm (0.12 - 0.24 inch)
Drop port quantity, Single	6
Dimensions	216(W) x 130 (D)x 62(H) mm (8.5 X 5.1 X 2.4 inches) 216(W) x 130 (D)x 87(H) (8.5 X 5.1 X 3.4 inches)*
Sealing level	IP 55
Color	Black RAL9005 or gray RAL7035

(*Upgrade kit includes one cover and two additional trays, and increases splice capacity from 18-54 splices.)

Ordering information

SEC -B A

Size and color

3	100 Black
4	100 Gray

Sealing

B	Aerial, IP55
---	--------------

Connector type

1	SC/UPC
2	LC/UPC
3	SC/APC
4	LC/APC
5	Splice only

Number of adapters

A	None
B	2
C	4

Mounting

A	None
---	------

Splice protector

B	SMOUV 45
C	ANT

Number of splices

G	18
H	54

Number of pigtails

1	None
3	4

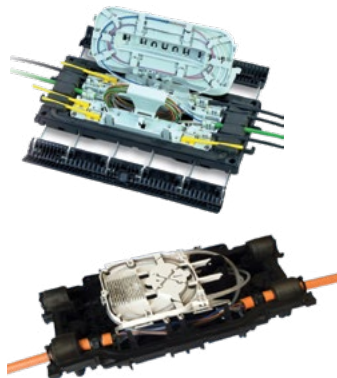
Splitters

1	None
2	1:2
3	1:4

Visit www.commscope.com product catalog for configuration availability

Distribution closures

Whatever your application needs, CommScope has a fiber distribution closure that will speed your deployment and bring future flexibility to your network.



TENIO closures

Feature modular building blocks and combine proven fiber management hardware with a superior sealing system to simplify training and reduce inventory.

- Single-ended closure for splicing feeder, access, and drop cables
- As many as 144 (12 x 12 fibers), 192 (8 x 24 fibers), or 288 (12 x 24 fibers) fiber splices
- Modular closure platform allows phased network deployment, lower initial CapEx
- 100 percent mechanical, tool-less, intuitive design assures rapid installation and easy on-going maintenance by less technical workforce
- Industry-renowned FIST fiber management system leading up to 30% faster and more intuitive fiber routing and installation
- Gel cable sealing technology allows easy adding or removing of a wide size range of cables
- Compatible with most common cable types: e.g., loose tube, central core, ribbon fiber

[Go to Fiber splice closures brochure](#) ↪

Splice closure in-line (SCIL) series

Configured to be in-line with the network feeder cable; suitable for many locations.

- Suitable for hand holes below ground, on the side of a building, or hung on a strand between poles
- Superior gel technology that seals a wide range of cable sizes to help prevent water and contaminant ingress; IP68 rated
- Cable termination and retention system fits any cable type from traditional loose tube buffered to small micro-sheath cables
- Maximum number of cables supported from 10 (SCIL-A), to 24 (SCIL-B)
- Fiber splice capacity from 48 (SCIL-A) to 288 (SCIL-C)
- Storage baskets for looped fiber cable
- Closure opens and closes with side latches for quick re-entry

[Go to Fiber splice closures brochure](#) ↪

NOVUX CSC150 Compact Closure

Optimized for new builds, expansions and upgrades in FTTH last-mile drop applications

- Connectivity independent – splice only, pre-connectorized drop or field-installable connector choices
- Up to 72 splices (patch or splice) or up to 96 splices
- Up to 3 splitters
- 8 X SC/APC or 16 X LC/APC duplex
- Advanced Octopus™ silicone gel sealing technology for reliable reuse and re-entry
- Integrated in-tray optical technology (splitter, optical tap)
- Optimized fiber management, storage and cable retention
- P68 2-meter water head
- Optimized accessibility with removable inner body and innovative hinge design for left, right or top entry
- Easy out-of-closure cable prep and termination with cable termination units

[Go to optical fiber distribution closures brochure](#) ↪

A complete range of fiber cables for any urban FTTH deployment

CommScope's outside plant fiber cables are made with high-performance, standards-compliant materials. Their standard jacket material is polyethylene, which provides a rugged, durable finish. Our cable portfolio includes both armored and dielectric designs, available with dry or gel-filled tubes. Whichever cable you choose, our design and construction techniques mean every cable we ship delivers:

- **Superior mechanical and optical performance**
- **Rapid deployment and operational efficiency**
- **Unmatched stability and quality**

[Go to fiber cables portfolio](#)



C-001-DN-8G-M01BK/20G/V6/D
810009884/DB



C-001-DN-8G-M01BK/15G/V6/D
760243202

Outdoor drop cable, gel-filled loose tube

- 1 fiber G657 A2—green inked
- 900 μ semi-tight buffer (strip >100 mm)
- Water-blocking yarns and E-Glass strength members
- Tube diameter—2 mm
- Outer diameter—5.05 mm, black, CPR rated Dca

Outdoor drop cable, gel-filled loose tube

- 1 fiber G657 A2—green inked – 250 μ
- Water-blocking yarns and E-Glass strength members
- Tube diameter—1.5 mm
- Outer diameter—4.50 mm, black, CPR rated Dca



R-001-SP-8G-29IV/WB/RNB
900003177/DB



D-001-DD-8G-M01BK/GY/20/AY/C
810009819/DB

D-002-DD-8G-M02BK/GY/20/AY/D
810009820/DB



Outdoor drop with indoor subunit

- Non-armored for aerial, underground (duct), and façade application
- 1-, 2-, or 4-fiber version G657A2
- Sub-unit: 2 mm, white, indoor with 900 μ buffer
- Outer diameter—5 mm
- Black color, UV stabilized
- Tensile load, long term: 400 N

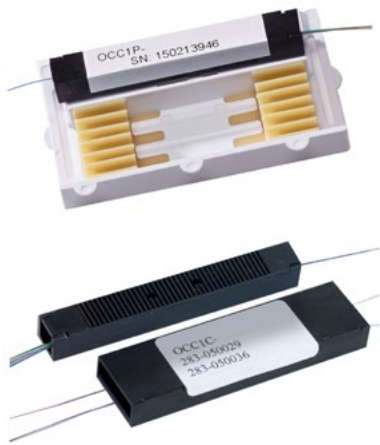
All-dielectric indoor/outdoor cable

- Dual jacket cable HDPE, inner jacket LSZH
- 1 fiber G657A2/B2
- 900 μ m semi-tight buffer
- Gel free
- Water-blocking and aramid yarn
- Outer jacket diameter 5 mm; inner jacket 2.9 mm
- Ivory color, UV stabilized
- Tensile load, long term: 30 N

Fiber Optic Indoor Drop Cable Assembly

- Can be stapled, allowing for fast and easy installations, (with CommScope stapling system)
- Rugged, flexible, and durable—for the most demanding applications

The ideal optical splitters for façade applications



CommScope OCC1P series optical splitters are perfect for urban façades

- Wideband, planar lightwave circuit (PLC)
- Singlemode, 1:2, 1:4, or 1:8 symmetrical split ratio
- 250 µm cable, unterminated

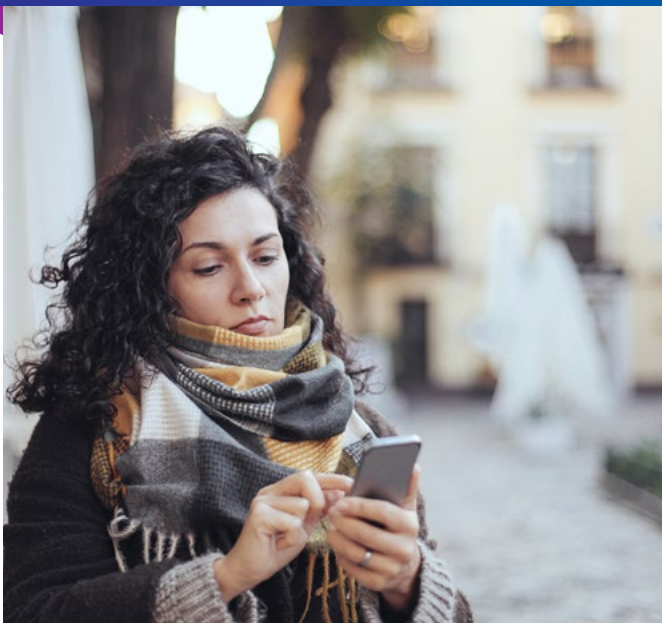
[Go to fiber splitters portfolio](#)

Fiber wall outlets—the final fiber termination point in the customer premises



- Can be wall mounted or mounted on wall boxes with fixation points of 60 mm
- Direct termination with field-installable connectors
- Laser safe, with in-built individual shutters
- Dimensions:
 - Height: 105.156 mm (4.14 in)
 - Width: 83.058 mm (3.27 in)
 - Depth: 25.146 mm (0.99 in)

[CK7246-000 | HFTP-NO-NN00-E](#)



A legacy of technical innovation, bringing agility and flexibility to your network

We're proud to introduce our new FTTH Façade Solution, patented technology giving our provider partners a powerful alternative for deploying FTTH to villages and low-density urban areas. For deployments where underground work is cost prohibitive, our Façade Solution allows providers to respond quickly to subscriber demand with fast and easy installations. Our FTTH Façade Solution is simply part of the evolution of network technology that CommScope has led for more than four decades. So, when it's time for new builds, upgrades, or expansion, you can trust CommScope to deliver the design excellence your network needs.

CommScope pushes the boundaries of communications technology with game-changing ideas and ground-breaking discoveries that spark profound human achievement.

We collaborate with our customers and partners to design, create and build the world's most advanced networks. It is our passion and commitment to identify the next opportunity and realize a better tomorrow. Discover more at commscope.com.

COMMSCOPE®

commscope.com

Visit our website or contact your local CommScope representative for more information.

© 2023 CommScope, Inc. All rights reserved. CommScope and the CommScope logo are registered trademarks of CommScope and/or its affiliates in the U.S. and other countries. For additional trademark information see <https://www.commscope.com/trademarks>. All product names, trademarks and registered trademarks are property of their respective owners.

BR-1144572-EN.GB (06/23)