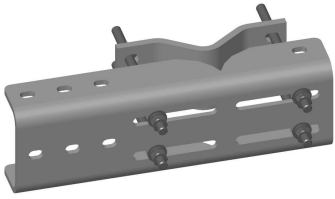


# MD-CS-B

---



Face Mounted Microwave Strut Support for up to 3-1/2 in face pipes

## Product Classification

**Product Type** Microwave strut support

## General Specifications

**Mounting** Straight or tapered legs up to 203.2 mm (8 in) OD

**Pipe, quantity** 0

**Tower Taper** Non-tapered | Tapered

## Dimensions

**Height** 152.4 mm | 6 in

**Width** 304.8 mm | 12 in

**Length** 203.2 mm | 8 in

**Mounting Diameter, maximum** 203.2 mm | 8 in

## Material Specifications

**Material Type** Hot dip galvanized steel

## Mechanical Specifications

**Wind Rating** For Specifications, please contact [steelproducts@commscope.com](mailto:steelproducts@commscope.com) or call 800-255-1479

## Packaging and Weights

**Included** Attachment hardware | Clamps

**Packaging quantity** 1

**Weight, net** 24.5 kg | 54.013 lb

## Regulatory Compliance/Certifications

# MD-CS-B

---

## Agency

CHINA-ROHS

ISO 9001:2015

ROHS

UK-ROHS



## Classification

Above maximum concentration value

Designed, manufactured and/or distributed under this quality management system

Compliant/Exempted

Compliant

## \* Footnotes

### Wind Rating

BWS—Base Wind Speed; FBC—Florida Building Code