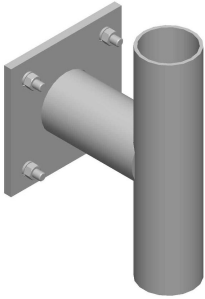


# MT-197-12

---



Single Support Arm, 12 in, includes pipe

## Product Classification

**Product Type** Support arms for ring mount

## General Specifications

**Mounting** Ring mount

**Pipe, quantity** 1

## Dimensions

**Height** 457.2 mm | 18 in

**Width** 254 mm | 10 in

**Length** 304.8 mm | 12 in

**Pipe Length** 457.2 mm | 18 in

**Pipe Outer Diameter** 114.3 mm | 4.5 in

**Stand-off Distance** 304.8 mm | 12 in

## Material Specifications

**Material Type** Hot dip galvanized steel

## Mechanical Specifications

**Wind Rating** 120 mph (BWS) at 150 ft AGL | 140 mph (3-second gust) at 150 ft AGL using Exposure D per FBC

**Wind Rating Criteria** Four 72 in x 8 in panel antennas per sector

**Wind Rating Test Method** TIA/EIA-222-G

## Packaging and Weights

**Included** Hardware | Stand-off arms

# MT-197-12

---

**Packaging quantity** 1  
**Weight, net** 22.7 kg | 50.045 lb

## Regulatory Compliance/Certifications

<b>Agency</b>	<b>Classification</b>
ISO 9001:2015	Designed, manufactured and/or distributed under this quality management system

## \* Footnotes

**Wind Rating** BWS—Base Wind Speed; FBC—Florida Building Code