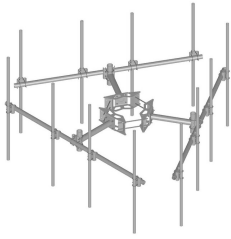


# MC-K12M-12-96

---



Monopole Co-location T-Frame kit, 12 in to 50 in OD, 12 ft 6 in face, includes pipe

## Product Classification

**Product Type** Monopole T-frame kit

## General Specifications

**Mounting** Monopole, 304.8–1270 mm (12–50 in) OD

**Pipe, quantity** 12

**Sectors, quantity** 3

## Dimensions

**Height** 2,438.4 mm | 96 in

**Face Width** 3.81 m | 12.5 ft

**Width** 3810 mm | 150 in

**Length** 914.4 mm | 36 in

**Pipe Length** 2,438.4 mm | 96 in

**Mounting Diameter, maximum** 1270 mm | 50 in

**Mounting Diameter, minimum** 304.8 mm | 12 in

**Pipe Outer Diameter** 60.96 mm | 2.4 in

**Stand-off Distance** 914.4 mm | 36 in

**Mounting Circumference, maximum** 3,990.34 mm | 157.1 in

**Mounting Circumference, minimum** 1,196.34 mm | 47.1 in

## Material Specifications

**Material Type** Hot dip galvanized steel

## Mechanical Specifications

**Wind Rating** 120 mph (BWS) at 150 ft AGL | 140 mph (3-second gust) at 150 ft AGL using Exposure D per FBC

**Wind Rating Criteria** Four 72 in x 8 in panel antennas per sector

# MC-K12M-12-96

---

**Wind Rating Test Method**

TIA/EIA-222-G

## Packaging and Weights

**Included**

Cellular pipe frames | Pipe mounts | Ring mount | Stand-off arms

**Packaging quantity**

1

**Weight, net**

598.787 kg | 1,320.1 lb

## Regulatory Compliance/Certifications

**Agency**

ISO 9001:2015

**Classification**

Designed, manufactured and/or distributed under this quality management system

## \* Footnotes

**Wind Rating**

BWS—Base Wind Speed; FBC—Florida Building Code