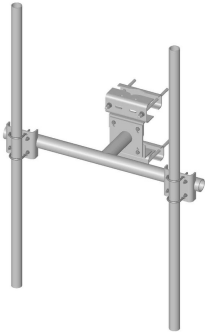


# SF-DPM3-84

---



Co-location Dual Pipe Mount Kit; includes (2) 2-7/8 in OD x 84 in pipes

## Product Classification

**Product Type** Co-location dual pipe mount kit

## General Specifications

**Mounting** Angle 60°, 203.2 mm (8 in) | Angle 90°, 152.4 mm (6 in) | Straight or tapered legs up to 203.2 mm (8 in) OD

**Note** Two 72 in x 8 in panel antenna per sector

**Pipe, quantity** 2

**Tower Taper** Non-tapered | Tapered

## Dimensions

**Height** 2,133.6 mm | 84 in

**Face Width** 1.463 m | 4.8 ft

**Width** 1,447.8 mm | 57 in

**Length** 0.396 m | 1.3 ft

**Pipe Length** 2,133.6 mm | 84 in

**Face Support Pipe Diameter** 88.9 mm | 3.5 in

**Mounting Diameter, maximum** 203.2 mm | 8 in

**Mounting Diameter, minimum** 0 mm | 0 in

**Pipe Outer Diameter** 73.66 mm | 2.9 in

**Stand-off Distance** 391.16 mm | 15.4 in

## Material Specifications

**Material Type** Hot dip galvanized steel

## Mechanical Specifications

# SF-DPM3-84

---

<b>Wind Rating</b>	120 mph (BWS) at 150 ft AGL   140 mph (3-second gust) at 150 ft AGL using Exposure D per FBC
<b>Wind Rating Test Method</b>	TIA/EIA-222

## Packaging and Weights

<b>Included</b>	Clamps   Frame   Pipe mounts   Pipes   Saddle mounts
<b>Packaging quantity</b>	1
<b>Weight, net</b>	133.8 kg   294.978 lb

## Regulatory Compliance/Certifications

<b>Agency</b>	<b>Classification</b>
ISO 9001:2015	Designed, manufactured and/or distributed under this quality management system

## \* Footnotes

<b>Wind Rating</b>	BWS—Base Wind Speed; FBC—Florida Building Code
--------------------	--