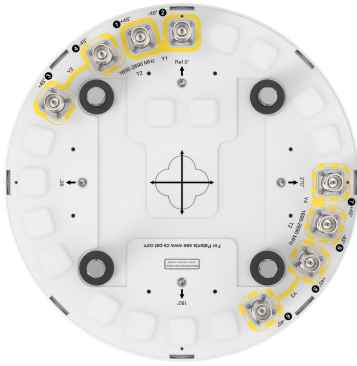


V4-360S-F2



8-port small cell antenna, 8x 1695–2690MHz, 360° Horizontal Beamwidth, fixed tilt.

- Broadband Mid Band arrays (AWS/PCS/WCS/Band 41) with 4T4R (4X MIMO) capability

General Specifications

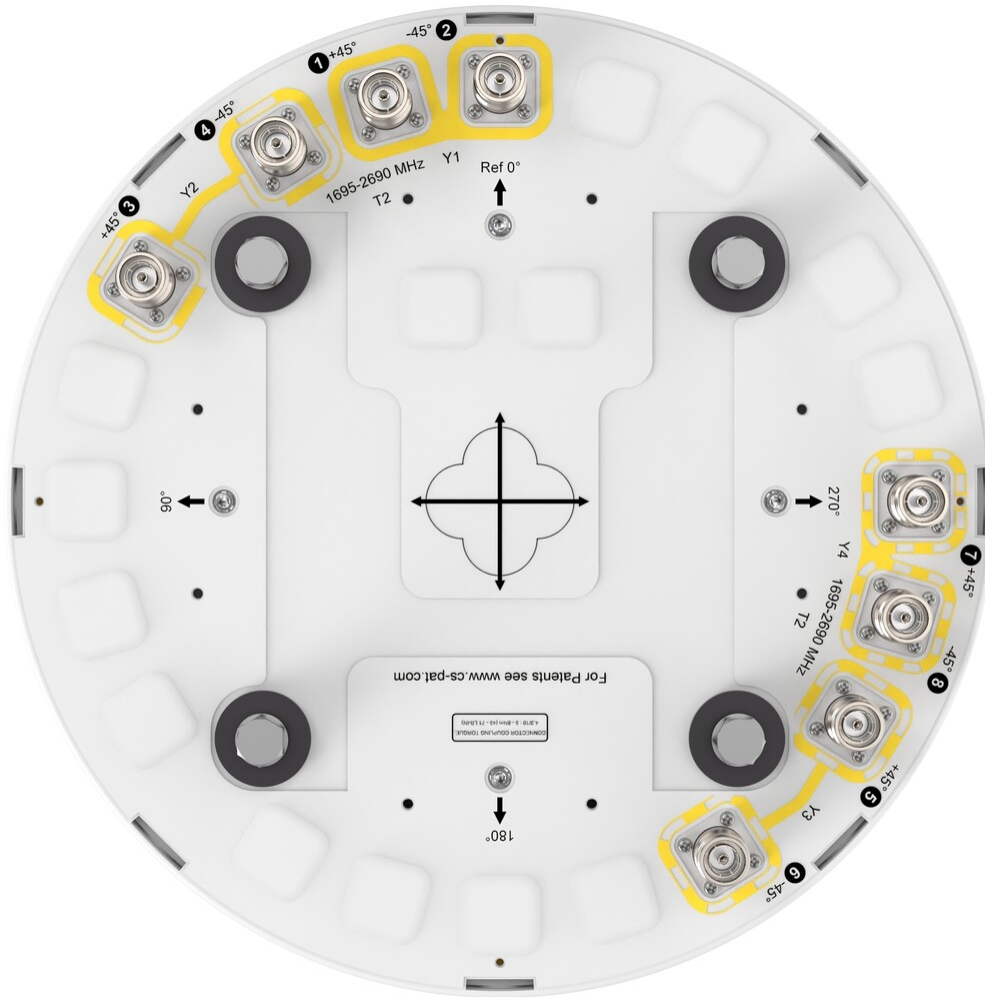
Antenna Type	Small Cell
Band	Single band
Color	Light Gray (RAL 7035)
Grounding Type	RF connector inner conductor and body grounded to reflector and mounting bracket
Performance Note	Outdoor usage
Radome Material	ASA, UV stabilized
Radiator Material	Low loss circuit board
Reflector Material	Aluminum
RF Connector Interface	4.3-10 Female
RF Connector Location	Bottom
RF Connector Quantity, high band	8
RF Connector Quantity, low band	0
RF Connector Quantity, total	8

Dimensions

Width	370 mm 14.567 in
Depth	370 mm 14.567 in
Length	610 mm 24.016 in
Net Weight, antenna only	14.8 kg 32.628 lb

Port Configuration

V4-360S-F2



Electrical Specifications

Impedance	50 ohm
Operating Frequency Band	1695 – 2690 MHz
Polarization	±45°
Total Input Power, maximum	480 W

Electrical Specifications

	Y1-Y4	Y1-Y4	Y1-Y4
Frequency Band, MHz	1695–1920	1920–2200	2300–2690
RF Port	1-8	1-8	1-8
Gain, dBi	8	9.3	8.7
Beamwidth, Horizontal, degrees	360	360	360

V4-360S-F2

Beamwidth, Vertical, degrees	21.9	19.5	16
Beam Tilt, degrees	2	2	2
Isolation, Cross Polarization, dB	25	25	25
Isolation, Inter-band, dB	28	28	28
VSWR Return loss, dB	1.5 14.0	1.5 14.0	1.5 14.0
PIM, 3rd Order, 2 x 20 W, dBc	-153	-153	-153
Input Power per Port, maximum, watts	200	200	200
Input Power per Port at 50°C, maximum, watts	150	150	150

Electrical Specifications, BASTA

Frequency Band, MHz	1695–1920	1920–2200	2300–2690
Gain by all Beam Tilts, average, dBi	7.4	8.3	8
Gain by all Beam Tilts Tolerance, dB	±0.8	±1.2	±1.1
Beamwidth, Vertical Tolerance, degrees	±2.5	±2	±1.7

Mechanical Specifications

Wind Loading @ Velocity, frontal	129.0 N @ 150 km/h (29.0 lbf @ 150 km/h)
Wind Loading @ Velocity, lateral	129.0 N @ 150 km/h (29.0 lbf @ 150 km/h)
Wind Loading @ Velocity, maximum	129.0 N @ 150 km/h (29.0 lbf @ 150 km/h)
Wind Loading @ Velocity, rear	129.0 N @ 150 km/h (29.0 lbf @ 150 km/h)
Wind Speed, maximum	241 km/h (150 mph)

Packaging and Weights

Width, packed	478 mm 18.819 in
Depth, packed	464 mm 18.268 in
Length, packed	894 mm 35.197 in
Weight, gross	19.2 kg 42.329 lb

Regulatory Compliance/Certifications

Agency	Classification
ISO 9001:2015	Designed, manufactured and/or distributed under this quality management system

* Footnotes

Performance Note	Severe environmental conditions may degrade optimum performance
-------------------------	---