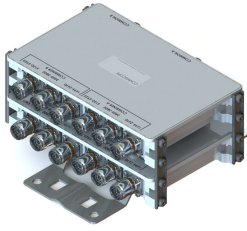


CBC173558Q-43 | E14F60P02



Quad Triplexer 1695-2690/3400-3800/5150-5925 MHz

- New Combining Solution for 3.5 and 5.8 GHz unlicensed Bands
- New 4.3-10 connectors for improved PIM performance and size reduction
- Quad configuration, 4x4 MIMO ready
- dc/AISG pass-through on low frequency ports

Product Classification

Product Type Triplexer

General Specifications

Color Gray

Modularity 4-Quad

Mounting Pipe Hardware Band clamps (2)

RF Connector Interface 4.3-10 Female

RF Connector Interface Body Style Long neck

Dimensions

Height 225 mm | 8.858 in

Width 145 mm | 5.709 in

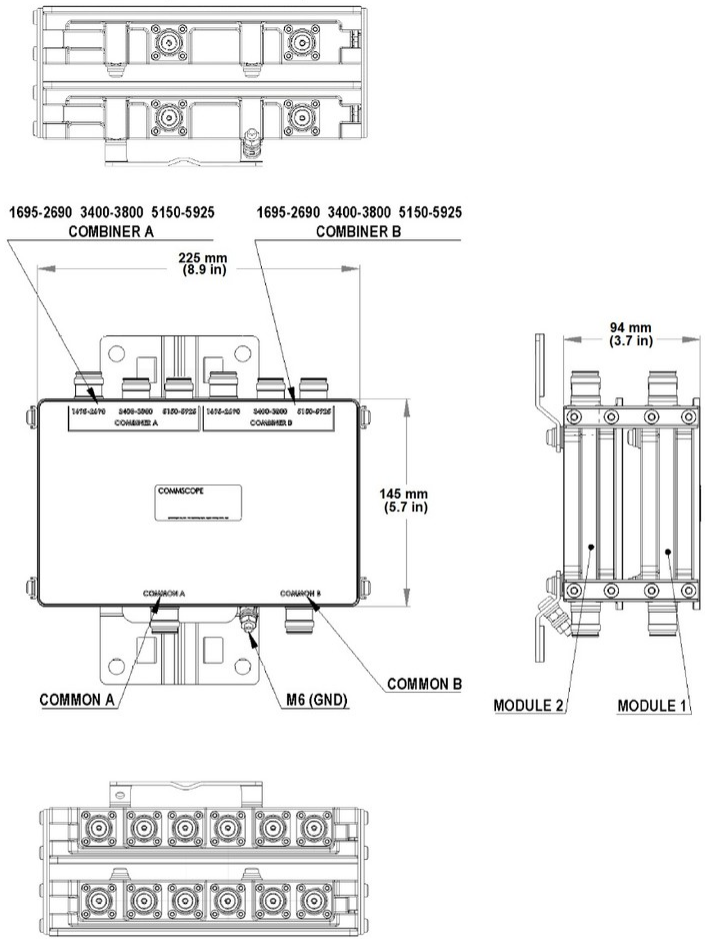
Depth 94 mm | 3.701 in

Ground Screw Diameter 6 mm | 0.236 in

Mounting Pipe Diameter Range 40–160 mm

Outline Drawing

CBC173558Q-43 | E14F60P02



Electrical Specifications

Impedance	50 ohm
License Band, Band Pass	AWS 2000 DCS 1800 IMT 2100 IMT 2600 LAA 5000 PCS 1900 TDD 1900 TDD 2000 TDD 2300 TDD 2600 TDD 3500 TDD 5000 WCS 2300

Electrical Specifications, Common Port

Composite Power, RMS	150 W
-----------------------------	-------

Electrical Specifications, dc Power/Alarm

dc/AISG Pass-through Method	Factory set
dc/AISG Pass-through Path	Branch 1
Lightning Surge Current	5 kA

CBC173558Q-43 | E14F60P02

Lightning Surge Current Waveform

8/20 waveform

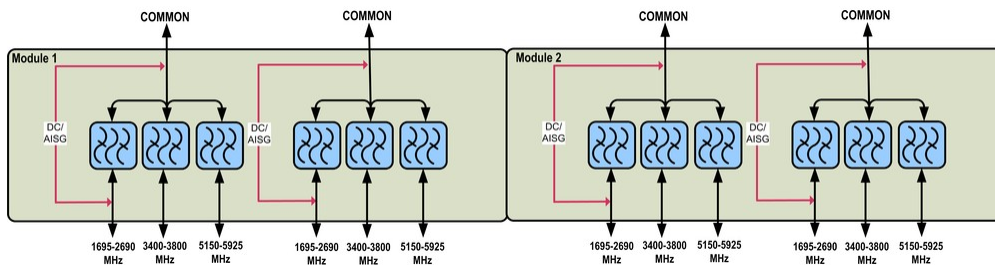
Electrical Specifications

Sub-module	1 2 3 4	1 2 3 4	1 2 3 4
Branch	1	2	3
Port Designation	1695-2690MHz	3400-3800MHz	5150-5925MHz
License Band	AWS 1700, Band Pass AWS 2000, Band Pass DCS 1800, Band Pass IMT 2100, Band Pass IMT 2600, Band Pass PCS 1900, Band Pass WCS 2300, Band Pass TDD 2000, Band Pass TDD 2300, Band Pass TDD 2600, Band Pass	TDD 3500, Band Pass	TDD 5000, Band Pass LAA 5000, Band Pass

Electrical Specifications, Band Pass

Frequency Range, MHz	1695–2690	3400–3800	5150–5925
Insertion Loss, typical, dB	0.2	0.2	0.2
Total Group Delay, maximum, ns	2	4	4
Return Loss, typical, dB	20	20	20
Isolation, typical, dB	40	40	40
Input Power, RMS, maximum, W	100	10	10
Input Power, PEP, maximum, W	1000	100	100
3rd Order PIM, typical, dBc	-161	-161	-161
3rd Order PIM Test Method	2 x 20 W CW tones	2 x 20 W CW tones	2 x 20 W CW tones

Block Diagram



Environmental Specifications

Operating Temperature	-40 °C to +65 °C (-40 °F to +149 °F)
Relative Humidity	5%–100%

CBC173558Q-43 | E14F60P02

Corrosion Test Method IEC 60068-2-11, 30 days

Ingress Protection Test Method IEC 60529:2001, IP67

Packaging and Weights

Included Mounting hardware

Mounting Hardware Weight 0.6 kg | 1.323 lb

Volume 3.2 L

Weight, without mounting hardware 5.4 kg | 11.905 lb

Regulatory Compliance/Certifications

Agency	Classification
ISO 9001:2015	Designed, manufactured and/or distributed under this quality management system