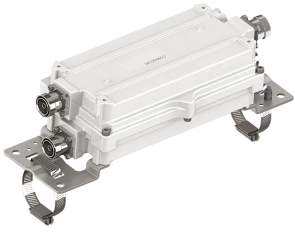


# E15V87P63

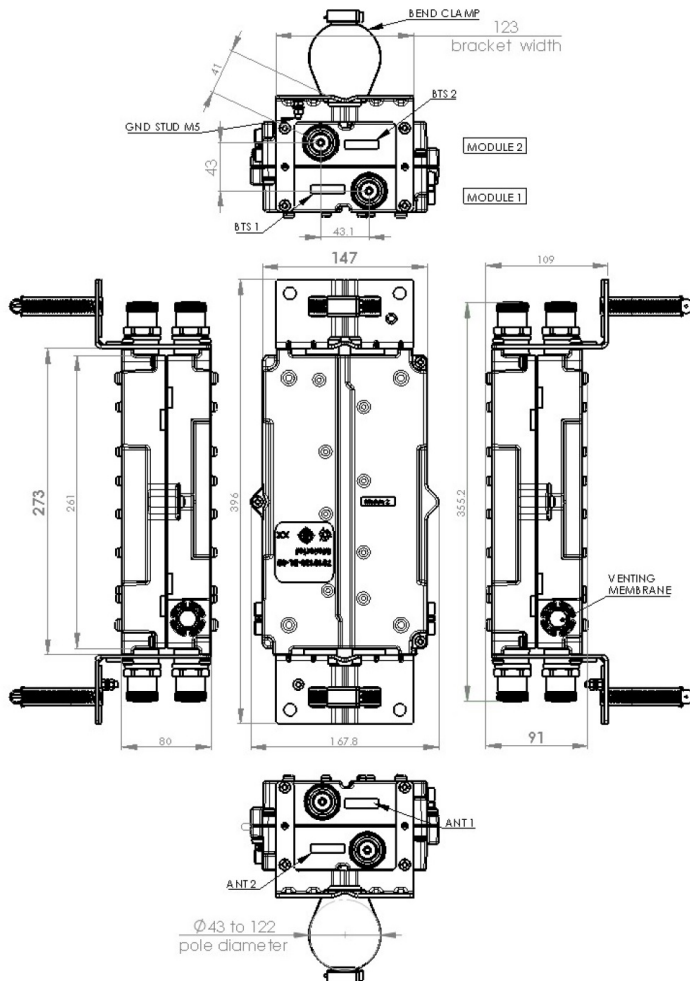


Interference Mitigation Filter for 2600 band with rejection 46dB in 2575-2615 MHz band, DC Pass

## Product Classification

**Product Type** Interference mitigation filter

## Outline Drawing



## Electrical Specifications

# E15V87P63

---

<b>Sub-module</b>	<b>1   2</b>
<b>Branch</b>	1
<b>License Band</b>	IMT 2600, Band Pass

## Electrical Specifications, Band Pass

<b>Frequency Range, MHz</b>	<b>2500–2570</b> <b>2620–2690</b>
<b>Insertion Loss, maximum, dB</b>	1.9
<b>Insertion Loss, typical, dB</b>	0.3
<b>Total Group Delay, maximum, ns</b>	130
<b>Total Group Delay, typical, ns</b>	10
<b>Return Loss, minimum, dB</b>	18
<b>Return Loss, typical, dB</b>	20
<b>Input Power, RMS, maximum, W</b>	100
<b>Input Power, PEP, maximum, W</b>	1000
<b>3rd Order PIM, maximum, dBc</b>	-150
<b>3rd Order PIM Test Method</b>	Two +43 dBm carriers

## Electrical Specifications, Band Reject

<b>Frequency Range, MHz</b>	<b>2575–2615</b>
<b>Attenuation, minimum, dB</b>	46

## Block Diagram

# E15V87P63

---

