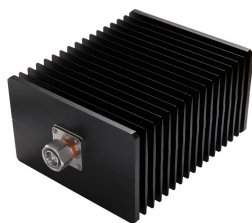


# T-100-UW-43-M

---



Termination Load, 0–6000 MHz

## Product Classification

|                              |   |
|------------------------------|---|
| <b>Regional Availability</b> | Asia   Australia/New Zealand   EMEA   Latin America   North America |
| <b>Product Type</b>          | Termination Load  |

## General Specifications

|                              |                  |
|------------------------------|------------------|
| <b>Device Type</b>           | Termination Load |
| <b>Application</b>           | Indoor/Outdoor   |
| <b>Color</b>                 | Black            |
| <b>Inner Contact Plating</b> | Silver           |
| <b>Interface</b>             | 4.3-10 Male      |
| <b>Outer Contact Plating</b> | Trimetal         |

## Dimensions

|               |                   |
|---------------|-------------------|
| <b>Height</b> | 89 mm   3.504 in  |
| <b>Width</b>  | 140 mm   5.512 in |
| <b>Length</b> | 190 mm   7.48 in  |

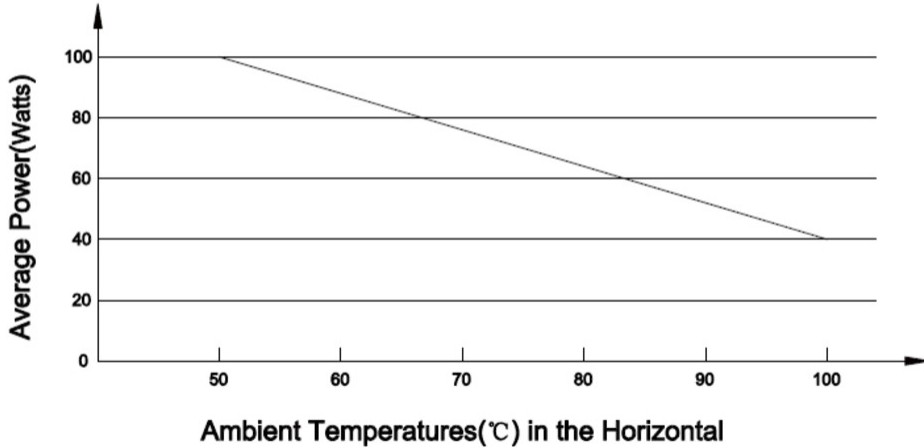
## Electrical Specifications

|                                 |              |
|---------------------------------|--------------|
| <b>Average Power, maximum</b>   | 100 W        |
| <b>Impedance</b>                | 50 ohm       |
| <b>Operating Frequency Band</b> | 0 – 6000 MHz |
| <b>VSWR</b>                     | 1.2          |

## Derating Curve

# T-100-UW-43-M

T-100 Power Derating for ambient temperatures above 50°C



## Environmental Specifications

|                                       |                                      |
|---------------------------------------|--------------------------------------|
| <b>Operating Temperature</b>          | -25 °C to +50 °C (-13 °F to +122 °F) |
| <b>Relative Humidity</b>              | Up to 100%                           |
| <b>Ingress Protection Test Method</b> | IEC 60529:2001, IP65                 |

## Packaging and Weights

|                       |                    |
|-----------------------|--------------------|
| <b>Height, packed</b> | 160 mm   6.299 in  |
| <b>Width, packed</b>  | 235 mm   9.252 in  |
| <b>Length, packed</b> | 380 mm   14.961 in |
| <b>Weight, gross</b>  | 2.45 kg   5.401 lb |
| <b>Weight, net</b>    | 2 kg   4.409 lb    |

## Regulatory Compliance/Certifications

| Agency        | Classification   |
|---------------|--|
| CHINA-ROHS    | Above maximum concentration value  |
| ISO 9001:2015 | Designed, manufactured and/or distributed under this quality management system |
| ROHS          | Compliant/Exempted   |
| UK-ROHS       | Compliant/Exempted   |

# T-100-UW-43-M

---

