

Light up the site!

CommScope's CellSign delivers 5G-ready outdoor small cell performance that really stands out.



Conceal small cells in plain sight with CellSign

4G and 5G networks need more outdoor sites than ever, and it may seem like you're running out of places to conceal them. CommScope's out-of-the-box thinking has delivered a new option—an outdoor small cell solution that provides 5G-ready performance IN THE BOX that hides in plain sight, almost anywhere there's signage space.

The all-in-one solution, all in one box.

CellSign takes outdoor small cells to the next level.



How it Looks

- Minimum form factor is 0.8 meters square, 0.25 meters deep, plus optional external antenna mount
- Can be sized to suit customer specifications, allowing it to blend with existing signage
- RF-transparent panels can be customized with any logo or design
- Available with or without integration illumination

What it does:

- Houses a wide range of 5-watt radios and BBUs, plus integrated power, fiber and cooling
- Supports both radio-imbedded and optional external (but concealed) antennas
- Features hinged panels that allow easy maintenance access
- Delivers coverage and capacity where they are needed most—in dense urban areas

CommScope's CellSign empowers your network to deploy 5G-ready outdoor small cell sites that blend and brand at the same time. Light up your next site deployment with a message that matters—with CommScope.

CellSign opens up a world of network and branding possibilities

Built to blend, CellSign is right at home anywhere signage is used. Consider the possibilities:

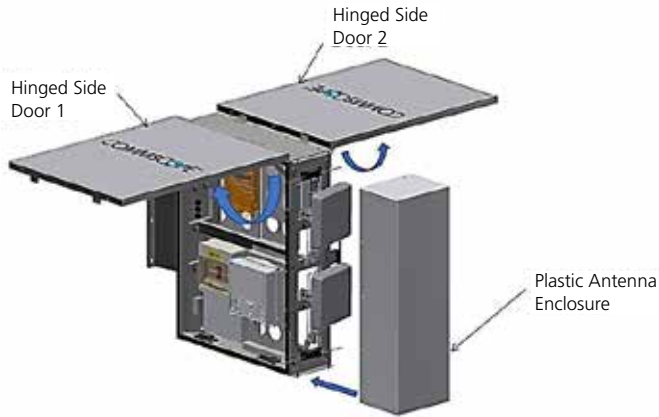
- Branded partnerships with property owners
- Promotion of your own network's brand
- Announcing the presence of 5G coverage to customers
- More sites in more places, covering more users than ever



Offload you Macro sites

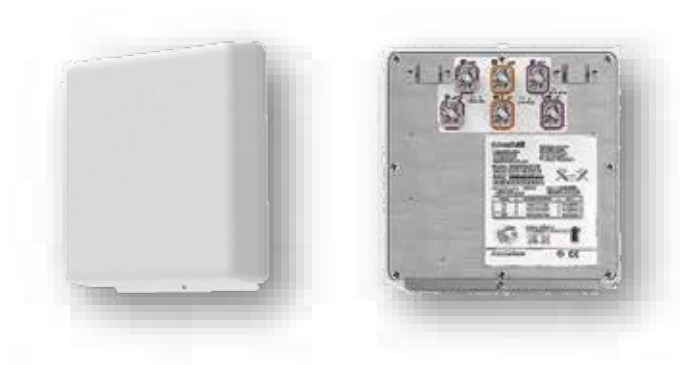
Gull-wing doors

Designed to host up to 3x 5W radios, the two hinged doors design allows easy equipment access in a reasonable dimension (800x 800x 250mm).



Choose from a wide CommScope Antennas Portfolio

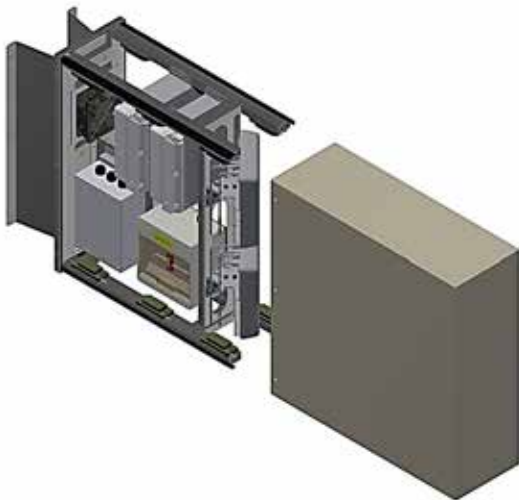
Designed with RF performance in mind, mix and match antennas from CommScope portfolio, including 5G bands, and our compatible Ruckus Wifi Access Points.



To learn more about CellSign, including custom sizes, graphics and other options, contact your CommScope representative today.

Sliding Sleeve

For compact applications, the sliding sleeve design can host up to 2x 5W radios, in just 600x 600x 220mm.



CommScope pushes the boundaries of communications technology with game-changing ideas and ground-breaking discoveries that spark profound human achievement. We collaborate with our customers and partners to design, create and build the world's most advanced networks. It is our passion and commitment to identify the next opportunity and realize a better tomorrow. Discover more at commscope.com

commscope.com Visit our website or contact your local CommScope representative for more information.

© 2020 CommScope, Inc. All rights reserved. Unless otherwise noted, all trademarks identified by ® or ™ are registered trademarks or trademarks, respectively, of CommScope, Inc. This document is for planning purposes only and is not intended to modify or supplement any specifications or warranties relating to CommScope products or services. CommScope is committed to the highest standards of business integrity and environmental sustainability, with a number of CommScope's facilities across the globe certified in accordance with international standards, including ISO 9001, TL 9000, and ISO 14001. Further information regarding CommScope's commitment can be found at www.commscope.com/corporate-responsibility-and-sustainability.