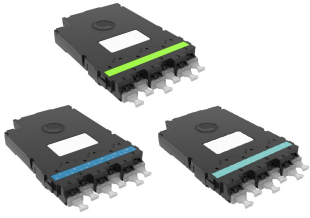


# CHD-MODULES

---



CHD modules are 12 fiber modules for use with CHD panels

## Product Classification

<b>Regional Availability</b>	Asia   Australia/New Zealand   EMEA   Latin America   North America
<b>Portfolio</b>	CommScope®
<b>Product Type</b>	Breakout module
<b>Product Series</b>	CHD

## General Specifications

<b>Polarity</b>	Method B Enhanced (ULL)
<b>Total Fibers, quantity</b>	12