

# 2UPX210B-T2



4-port multibeam antenna, 4x 694–896 MHz, 2x 37° HPBW, 2x RET with manual override.

- Integrated Internal Remote Electrical Tilt (RET), with independent control of electrical tilt with manual override on both beams
- Each port has an integrated bias tee, and each beam has its own smart switch that automatically selects between bias tee or AISG inputs according to a predetermined priority table
- Single panel design supporting two separate beams perfectly optimized at horizontal pointing angles of +27 degrees and –27 degrees from boresight

## General Specifications

|  |  |
|--|--|
| <b>Antenna Type</b>                    | Multibeam  |
| <b>Band</b>                            | Single band  |
| <b>Grounding Type</b>                  | RF connector body grounded to reflector and mounting bracket   |
| <b>Performance Note</b>                | Outdoor usage   Wind loading figures are validated by wind tunnel measurements described in white paper WP-112534-EN |
| <b>Radome Material</b>                 | Fiberglass, UV resistant   |
| <b>Radiator Material</b>               | Copper   Low loss circuit board  |
| <b>Reflector Material</b>              | Aluminum   |
| <b>RF Connector Interface</b>          | 7-16 DIN Female  |
| <b>RF Connector Location</b>           | Bottom   |
| <b>RF Connector Quantity, low band</b> | 4  |
| <b>RF Connector Quantity, total</b>    | 4  |

## Remote Electrical Tilt (RET) Information

|  |                                   |
|--|-----------------------------------|
| <b>RET Interface</b>                                 | 8-pin DIN Female   8-pin DIN Male |
| <b>RET Interface, quantity</b>                       | 1 female   2 male                 |
| <b>Input Voltage</b>                                 | 10–30 Vdc                         |
| <b>Internal Bias Tee</b>                             | Port 1   Port 2   Port 3   Port 4 |
| <b>Internal RET</b>                                  | Low band (2)                      |
| <b>Power Consumption, idle state, maximum</b>        | 2 W                               |
| <b>Power Consumption, normal conditions, maximum</b> | 13 W                              |
| <b>Protocol</b>                                      | 3GPP/AISG 2.0 (Single RET)        |

# 2UPX210B-T2

## Dimensions

|   |                     |
|---|---------------------|
| <b>Width</b>                            | 640 mm   25.197 in  |
| <b>Depth</b>                            | 235 mm   9.252 in   |
| <b>Length</b>                           | 2533 mm   99.724 in |
| <b>Net Weight, without mounting kit</b> | 47 kg   103.617 lb  |

## Electrical Specifications

|                                   |               |
|-----------------------------------|---------------|
| <b>Impedance</b>                  | 50 ohm        |
| <b>Operating Frequency Band</b>   | 694 – 896 MHz |
| <b>Polarization</b>               | ±45°          |
| <b>Total Input Power, maximum</b> | 700 W @ 50 °C |

## Electrical Specifications

| <b>Frequency Band, MHz</b>                          | <b>694–806</b> | <b>806–896</b> |
|---|----------------|----------------|
| <b>Gain, dBi</b>                                    | 17.9           | 18.7           |
| <b>Beam Centers, Horizontal, degrees</b>            | ±27            | ±27            |
| <b>Beamwidth, Horizontal, degrees</b>               | 39             | 36             |
| <b>Beamwidth, Vertical, degrees</b>                 | 9.6            | 8.4            |
| <b>Beam Tilt, degrees</b>                           | 0–10           | 0–10           |
| <b>USLS (First Lobe), dB</b>                        | 21             | 21             |
| <b>Front-to-Back Ratio at 180°, dB</b>              | 34             | 40             |
| <b>Isolation, Cross Polarization, dB</b>            | 25             | 25             |
| <b>Isolation, Inter-band, dB</b>                    | 18             | 18             |
| <b>VSWR   Return loss, dB</b>                       | 1.43   15.0    | 1.43   15.0    |
| <b>PIM, 3rd Order, 2 x 20 W, dBc</b>                | -150           | -150           |
| <b>Input Power per Port at 50°C, maximum, watts</b> | 200            | 200            |

## Electrical Specifications, BASTA

| <b>Frequency Band, MHz</b>                      | <b>694–806</b>                       | <b>806–896</b>                       |
|---|--------------------------------------|--------------------------------------|
| <b>Gain by all Beam Tilts, average, dBi</b>     | 17.6                                 | 18.5                                 |
| <b>Gain by all Beam Tilts Tolerance, dB</b>     | ±0.6                                 | ±0.3                                 |
| <b>Gain by Beam Tilt, average, dBi</b>          | 0°   17.6<br>5°   17.6<br>10°   17.6 | 0°   18.5<br>5°   18.5<br>10°   18.4 |
| <b>Beamwidth, Horizontal Tolerance, degrees</b> | ±1.8                                 | ±1.6                                 |
| <b>Beamwidth, Vertical Tolerance, degrees</b>   | ±0.7                                 | ±0.4                                 |

# 2UPX210B-T2

---

|  |    |    |
|--|----|----|
| <b>USLS, beampeak to 20° above beampeak, dB</b>    | 21 | 19 |
| <b>Front-to-Back Total Power at 180° ± 30°, dB</b> | 25 | 29 |
| <b>CPR at Boresight, dB</b>                        | 20 | 19 |

## Mechanical Specifications

|   |   |
|---|---|
| <b>Wind Loading @ Velocity, frontal</b> | 1,102.0 N @ 150 km/h (247.7 lbf @ 150 km/h) |
| <b>Wind Loading @ Velocity, lateral</b> | 372.0 N @ 150 km/h (83.6 lbf @ 150 km/h)    |
| <b>Wind Loading @ Velocity, maximum</b> | 1,497.0 N @ 150 km/h (336.5 lbf @ 150 km/h) |
| <b>Wind Loading @ Velocity, rear</b>    | 1,135.0 N @ 150 km/h (255.2 lbf @ 150 km/h) |
| <b>Wind Speed, maximum</b>              | 200 km/h (124 mph)                          |

## Packaging and Weights

|                       |                      |
|-----------------------|----------------------|
| <b>Width, packed</b>  | 797 mm   31.378 in   |
| <b>Depth, packed</b>  | 402 mm   15.827 in   |
| <b>Length, packed</b> | 2684 mm   105.669 in |
| <b>Weight, gross</b>  | 67 kg   147.71 lb    |

## Regulatory Compliance/Certifications

| <b>Agency</b> | <b>Classification</b>  |
|---------------|--|
| CHINA-ROHS    | Above maximum concentration value  |
| ISO 9001:2015 | Designed, manufactured and/or distributed under this quality management system |
| ROHS          | Compliant/Exempted   |
| UK-ROHS       | Compliant/Exempted   |



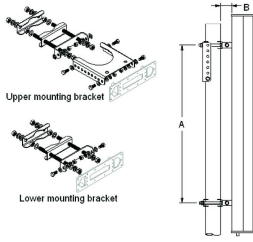
## Included Products

|            |   |  |
|------------|---|--|
| T-029-GL-E | – | Adjustable Tilt Pipe Mounting Kit for 2.362"-4.5" (60-115mm) OD round members for panel antennas. Includes 2 clamp sets. |
|------------|---|--|

## \* Footnotes

|                         |   |
|-------------------------|---|
| <b>Performance Note</b> | Severe environmental conditions may degrade optimum performance |
|-------------------------|---|

# T-029-GL-E



Adjustable Tilt Pipe Mounting Kit for 2.362"-4.5" (60-115mm) OD round members for panel antennas. Includes 2 clamp sets.

## Product Classification

**Product Type** Adjustable tilt mounting kit

## General Specifications

**Application** Outdoor

**Color** Silver

## Dimensions

**Compatible Length, maximum** 2850 mm | 112.205 in

**Compatible Length, minimum** 1500 mm | 59.055 in

**Compatible Diameter, maximum** 115 mm | 4.528 in

**Compatible Diameter, minimum** 60 mm | 2.362 in

**Antenna-to-Pipe Distance** 85 mm | 3.346 in

**Bracket-to-Bracket Distance** 1400 mm | 55.118 in

**Weight, net** 6 kg | 13.228 lb

## Material Specifications

**Material Type** Galvanized steel

## Mechanical Specifications

**Mechanical Tilt** 0°-8°

## Packaging and Weights

**Included** Brackets | Hardware

**Packaging quantity** 1

## Regulatory Compliance/Certifications

| Agency | Classification                                    |
|--------|---|
| CE     | Compliant with the relevant CE product directives |

# T-029-GL-E

---

|               |  |
|---------------|--|
| CHINA-ROHS    | Below maximum concentration value  |
| ISO 9001:2015 | Designed, manufactured and/or distributed under this quality management system   |
| REACH-SVHC    | Compliant as per SVHC revision on <a href="http://www.commscope.com/ProductCompliance">www.commscope.com/ProductCompliance</a> |
| ROHS          | Compliant  |
| UK-ROHS       | Compliant  |

