

# NNH4-65B-R6H4



12-port sector antenna, 4x 698–896 and 8x 1695–2360 MHz, 65° HPBW, 6x RET

- Features broadband Low Band (698-896 MHz) and High Band (1695-2360 MHz) arrays for 4T4R (4X MIMO) capability for Band 14, AWS, PCS and WCS applications
- Non-stacked high band array design provides higher gain and narrower vertical beamwidth than traditional antenna designs
- Independent tilt for all arrays
- Array configuration provides capability for 4T4R (4x MIMO) on Low band and Dual 4T4R (4x MIMO) on High band
- Optimized SPR performance across all operating bands
- Excellent wind loading characteristics
- Supports re-configurable antenna sharing capability enabling control of the internal RET system using up to two separate RET compatible OEM radios

## General Specifications

<b>Antenna Type</b>	Sector
<b>Band</b>	Multiband
<b>Color</b>	Light Gray (RAL 7035)
<b>Grounding Type</b>	RF connector inner conductor and body grounded to reflector and mounting bracket
<b>Performance Note</b>	Outdoor usage   Wind loading figures are validated by wind tunnel measurements described in white paper WP-112534-EN
<b>Radome Material</b>	Fiberglass, UV resistant
<b>Radiator Material</b>	Low loss circuit board
<b>Reflector Material</b>	Aluminum
<b>RF Connector Interface</b>	4.3-10 Female
<b>RF Connector Location</b>	Bottom
<b>RF Connector Quantity, high band</b>	8
<b>RF Connector Quantity, low band</b>	4
<b>RF Connector Quantity, total</b>	12

## Remote Electrical Tilt (RET) Information

<b>RET Hardware</b>	CommRET v2
<b>RET Interface</b>	8-pin DIN Female   8-pin DIN Male
<b>RET Interface, quantity</b>	2 female   2 male


# NNH4-65B-R6H4

<b>Input Voltage</b>	10–30 Vdc
<b>Internal RET</b>	High band (4)   Low band (2)
<b>Power Consumption, active state, maximum</b>	8 W
<b>Power Consumption, idle state, maximum</b>	1 W
<b>Protocol</b>	3GPP/AISG 2.0 (Multi-RET)

## Dimensions

<b>Width</b>	498 mm   19.606 in
<b>Depth</b>	197 mm   7.756 in
<b>Length</b>	1828 mm   71.969 in
<b>Net Weight, antenna only</b>	34 kg   74.957 lb

## Array Layout

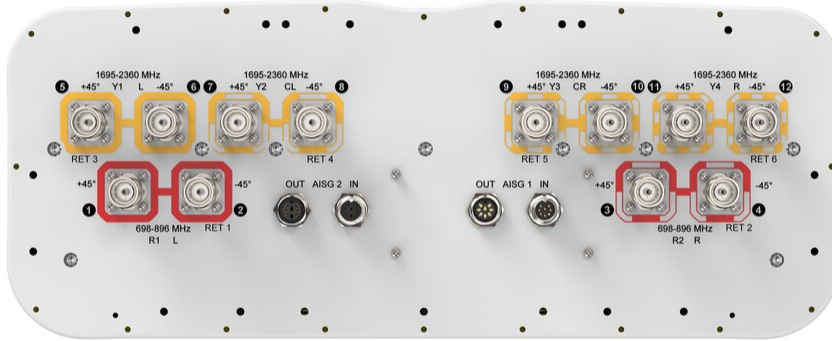


Array	Freq (MHz)	Conns	RET (MRET)	AISG RET UID
R1	698-896	1-2	1	CPxxxxxxxxxxxxxxxxmm.1
R2	698-896	3-4	2	CPxxxxxxxxxxxxxxxxmm.2
Y1	1695-2360	5-6	3	CPxxxxxxxxxxxxxxxxmm.3
Y2	1695-2360	7-8	4	CPxxxxxxxxxxxxxxxxmm.4
Y3	1695-2360	9-10	5	CPxxxxxxxxxxxxxxxxmm.5
Y4	1695-2360	11-12	6	CPxxxxxxxxxxxxxxxxmm.6

(Sizes of colored boxes are not true depictions of array sizes)

## Port Configuration

# NNH4-65B-R6H4



## Electrical Specifications

<b>Impedance</b>	50 ohm
<b>Operating Frequency Band</b>	1695 – 2360 MHz   698 – 896 MHz
<b>Polarization</b>	±45°
<b>Total Input Power, maximum</b>	900 W @ 50 °C

## Electrical Specifications

	<b>R1-R2</b>	<b>R1-R2</b>	<b>Y1-Y4</b>	<b>Y1-Y4</b>	<b>Y1-Y4</b>	<b>Y1-Y4</b>
<b>Frequency Band, MHz</b>	<b>698–806</b>	<b>806–896</b>	<b>1695–1880</b>	<b>1850–1990</b>	<b>1920–2180</b>	<b>2300–2360</b>
<b>RF Port</b>	1-4	1-4	5-12	5-12	5-12	5-12
<b>Gain, dBi</b>	14.2	14.8	16.7	17.3	17.9	18.4
<b>Beamwidth, Horizontal, degrees</b>	68	64	70	67	61	59
<b>Beamwidth, Vertical, degrees</b>	11.5	10.2	6.9	6.5	6	5.4
<b>Beam Tilt, degrees</b>	2–14	2–14	2–12	2–12	2–12	2–12
<b>USLS (First Lobe), dB</b>	16	18	16	19	19	19
<b>Front-to-Back Ratio at 180°, dB</b>	30	30	33	34	34	34
<b>Isolation, Cross Polarization, dB</b>	25	25	25	25	25	25

# NNH4-65B-R6H4

<b>Isolation, Inter-band, dB</b>	25	25	25	25	25	25
<b>VSWR   Return loss, dB</b>	1.5 14.0	1.5 14.0	1.5 14.0	1.5 14.0	1.5 14.0	1.5 14.0
<b>PIM, 3rd Order, 2 x 20 W, dBc</b>	-150	-150	-150	-150	-150	-150
<b>Input Power per Port at 50°C, maximum, watts</b>	300	300	250	250	250	200

## Electrical Specifications, BASTA

	<b>698–806</b>	<b>806–896</b>	<b>1695–1880</b>	<b>1850–1990</b>	<b>1920–2180</b>	<b>2300–2360</b>
<b>Frequency Band, MHz</b>						
<b>Gain by all Beam Tilts, average, dBi</b>	13.8	14.5	16.1	16.9	17.5	18
<b>Gain by all Beam Tilts Tolerance, dB</b>	±0.6	±0.5	±0.7	±0.6	±0.6	±0.5
<b>Beamwidth, Horizontal Tolerance, degrees</b>	±6	±3	±6	±8	±6	±4
<b>Beamwidth, Vertical Tolerance, degrees</b>	±0.9	±0.7	±0.5	±0.3	±0.4	±0.2
<b>USLS, beampeak to 20° above beampeak, dB</b>	16	15	12	15	15	16
<b>Front-to-Back Total Power at 180° ± 30°, dB</b>	20	21	27	26	27	28
<b>CPR at Boresight, dB</b>	24	23	19	19	20	17
<b>CPR at Sector, dB</b>	12	10	7	5	6	8

## Mechanical Specifications

<b>Effective Projective Area (EPA), frontal</b>	0.65 m <sup>2</sup>   6.997 ft <sup>2</sup>
<b>Effective Projective Area (EPA), lateral</b>	0.22 m <sup>2</sup>   2.368 ft <sup>2</sup>
<b>Wind Loading @ Velocity, frontal</b>	694.0 N @ 150 km/h (156.0 lbf @ 150 km/h)
<b>Wind Loading @ Velocity, lateral</b>	235.0 N @ 150 km/h (52.8 lbf @ 150 km/h)
<b>Wind Loading @ Velocity, maximum</b>	900.0 N @ 150 km/h (202.3 lbf @ 150 km/h)
<b>Wind Loading @ Velocity, rear</b>	571.0 N @ 150 km/h (128.4 lbf @ 150 km/h)
<b>Wind Speed, maximum</b>	241.4 km/h (150 mph)

## Packaging and Weights

<b>Width, packed</b>	565 mm   22.244 in
<b>Depth, packed</b>	309 mm   12.165 in
<b>Length, packed</b>	2035 mm   80.118 in
<b>Weight, gross</b>	45.2 kg   99.649 lb

# NNH4-65B-R6H4

---

## Regulatory Compliance/Certifications

Agency	Classification
CHINA-ROHS	Above maximum concentration value
ISO 9001:2015	Designed, manufactured and/or distributed under this quality management system
ROHS	Compliant/Exempted
UK-ROHS	Compliant/Exempted



## Included Products

BSAMNT-2F	–	Mounting bracket for cylindrical pipe installations (60-115mm pipe diameter) for fix mechanical tilt applications.
-----------	---	--

## \* Footnotes

<b>Performance Note</b>	Severe environmental conditions may degrade optimum performance
-------------------------	---