



SYSTIMAX® Splice Wallet Instructions

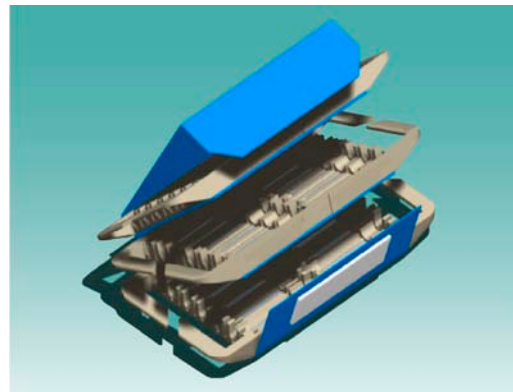
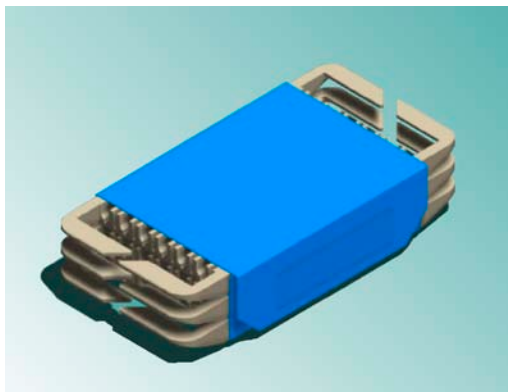
General

This instruction sheet provides procedures for installing the **SYSTIMAX®** splice wallet, multiple splice organizer management system and is intended for indoor use or can be used outdoors in a suitable protective enclosure.

The splice wallet is available in several different kits, both with and without splice trays, including (but not limited to) the following:

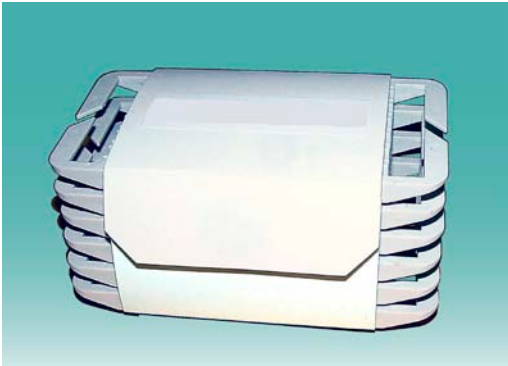
Material ID	Description
760027342	6X splice wallet
760031047	6X splice wallet with 6 mechanical (rotary) splice trays
760031054	6X splice wallet with 6 fusion splice trays
760057059	3X splice wallet
760057067	3X splice wallet with 3 mechanical (rotary) splice trays
760057075	3X splice wallet with 3 fusion splice trays

3X Splice Wallet



This product is covered by one or more of the following U.S. patents or their foreign equivalents: 7,113,687 B2.

6X Splice Wallet



How to Contact Us

- To find out more about **CommScope**® products, visit us on the web at <http://www.commscope.com/>
- For technical assistance:
 - Within the United States, contact your local account representative or technical support at 1-800-344-0223. Outside the United States, contact your local account representative or Authorized Business Partner.
 - Within the United States, report any missing/damaged parts or any other issues to **CommScope** Customer Claims at 1-866-539-2795. Outside the United States, contact your local account representative or Authorized Business Partner.

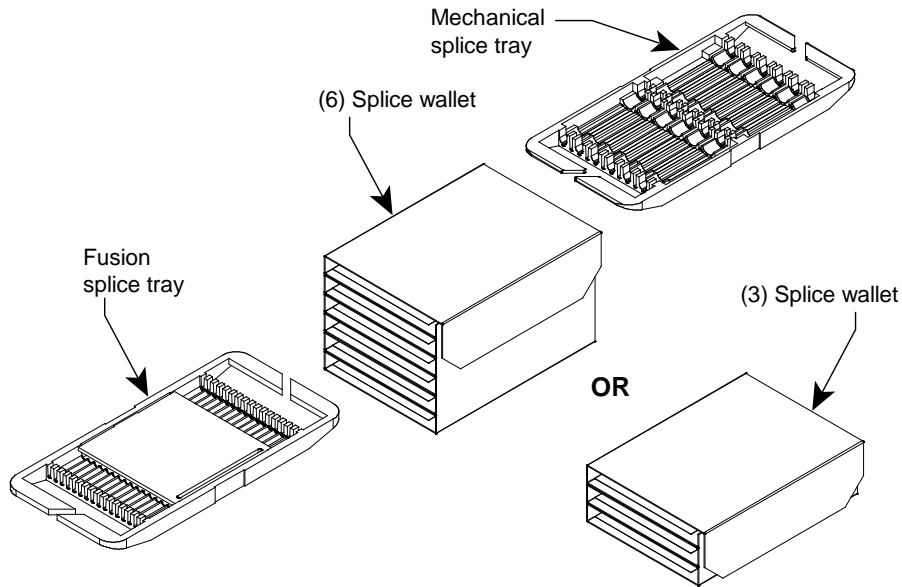
Materials Required

- Isopropyl alcohol
- Lint-free cloth or tissue

CAUTION:

- Isopropyl alcohol is flammable, and can cause eye irritation on contact. If eye contact occurs, flush with water for at least 15 minutes. In case of ingestion, consult a physician. Use only in well ventilated areas.

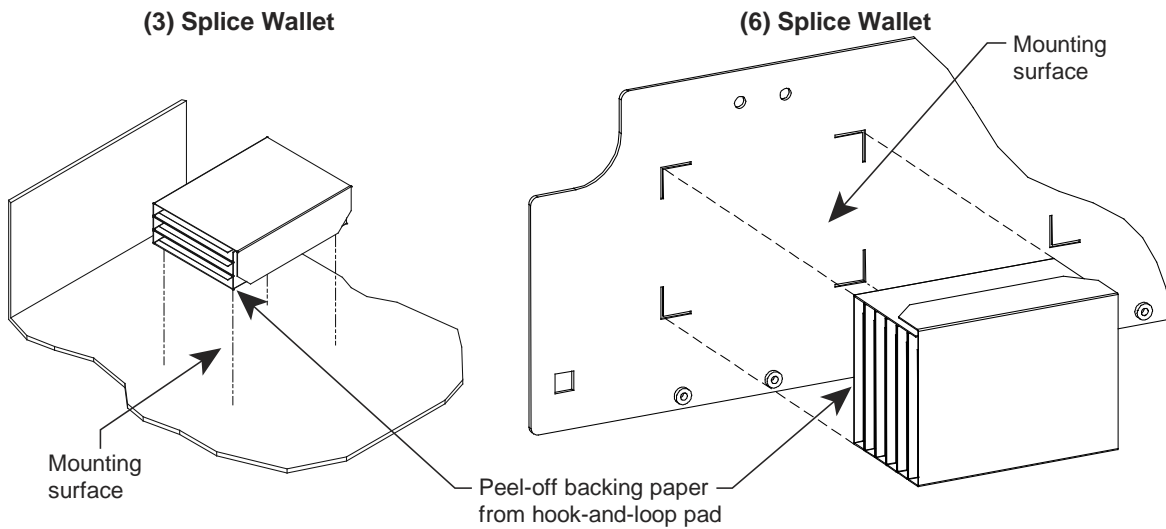
Step 1 – Verify Kit Number and Contents



1. Verify parts in kit against those listed in Ordering Information section on previous page.

Step 2 – Mount Splice Wallet

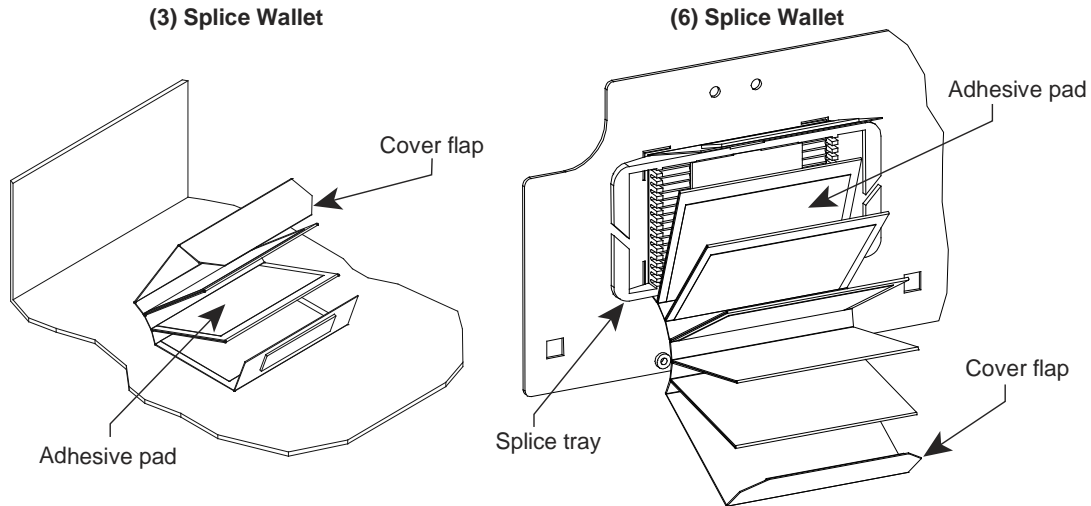
Note: Splice wallet shall be mounted on a smooth, flat surface only. Orient as required for accessibility and easy fiber routing.



1. Wipe mounting surface with isopropyl alcohol and a lint-free cloth or tissue to clean and degrease.
2. Peel-off paper backing from hook-and-loop pad on base of splice wallet. Press splice wallet firmly into place and apply pressure for several seconds to assure that adhesive makes good contact.

Step 3 – Mount Splice Trays

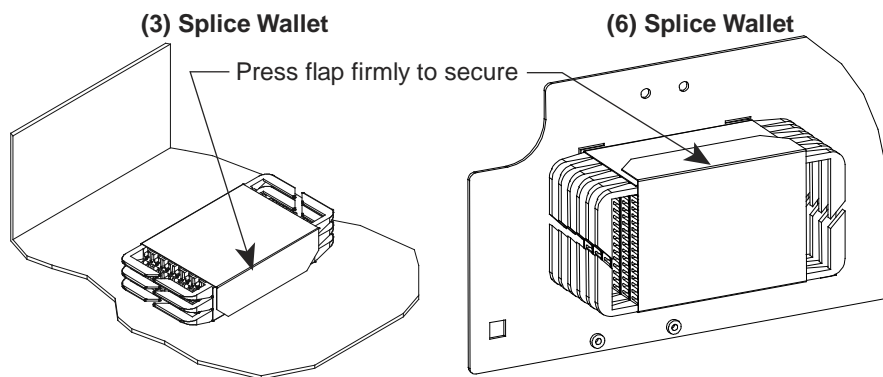
Note: In order to function properly, all positions of the splice wallet must be populated with splice trays, whether or not they are to be used. Splice trays are mounted with adhesive pads provided on leaves of splice wallet.



1. Wipe rear of splice tray with isopropyl alcohol and a lint-free cloth or tissue to clean and degrease.
2. Open cover flap of splice wallet and peel-off paper backing from an adhesive pad. Press splice tray firmly onto pad and apply pressure for several seconds to assure that adhesive makes good contact.
3. Repeat above items for each remaining position in splice wallet.

Note: Installer may wish to populate splice tray before attaching to splice wallet. Alternatively, splice wallet may be temporarily removed from mounting surface (by releasing the hook-and-loop fastener) for splicing operations.

Step 4 – Close Splice Wallet and Secure



1. Close splice wallet cover and align hook-and-loop fasteners before pressing cover flap firmly to secure.