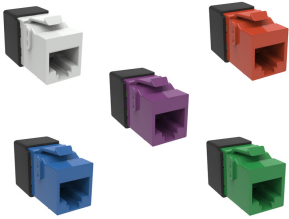


KJ10G

Base Product



KJ-Series Modular Jack, RJ45, Cat6A Unshielded

Product Classification

Regional Availability

Asia | Australia/New Zealand | EMEA | Latin America

Portfolio

NETCONNECT®

Product Type

Modular jack

Product Series

KJ Series

General Specifications

ANSI/TIA Category

6A

Cable Type

Unshielded

Conductor Type

Solid | Stranded

Mounting

Keystone faceplates and panels

Outlet Type

Standard

Termination Tool

SL Termination tool

Termination Type

IDC

Transmission Standards

ANSI/TIA-568.2-D | ISO/IEC 11801 Class EA

Wiring

T568A | T568B

Dimensions

Panel Cutout, recommended

14.78 x 19.30 mm (0.58 x 0.76 in)

Panel Thickness, recommended

1.6 mm | 0.063 in

Height

16.13 mm | 0.635 in

Width

16.48 mm | 0.649 in

Depth

30.48 mm | 1.2 in

Compatible Cable Diameter, maximum

7.24 mm | 0.285 in

Compatible Insulated Conductor Diameter, maximum

1.45 mm | 0.057 in

Contact Plating Thickness

1.27 µm

KJ10G

Compatible Conductor Gauge, solid 24–22 AWG

Compatible Conductor Gauge, stranded 26–24 AWG

Electrical Specifications

Remote Powering Fully supports the safe delivery of power over LAN cabling described by IEEE 802.3bt (Type 4) and complies with the unmating under electrical load requirements prescribed by IEC 60512-99-002

PoE Durability Supports IEEE 802.3bt Type 4 (90 W) applications after 3000 plug to jack mating cycles

Material Specifications

Contact Base Material Beryllium copper

Contact Plating Material Gold

Material Type Copper alloy | High-impact, flame retardant, thermoplastic | Polycarbonate

Mechanical Specifications

Plug to Jack Mating Cycles Complies to IEC 60603-7 series

Environmental Specifications

Operating Temperature -10 °C to +60 °C (+14 °F to +140 °F)

Storage Temperature -40 °C to +70 °C (-40 °F to +158 °F)

Flammability Rating UL 94 V-0