

# 860674607-048 | HG ANCHOR,GUYED-TOWER, 48" FACE

---



## Cable Support Mount for Guyed Towers to Support Cable, 48" Face

-The 860674607-048 is a purpose built tower face bracket that is designed to support 1000 pounds of cable per eye up to 2000 pounds in combination. Ideal for Hybrid cable. Includes mounting eye bolt for attachment.

-Product is designed to be field installed as needed on tower legs and across the tower face to provide an engineered attachment point for the support of cables.

-Can be installed inside or outside of tower face.  
-Stands off tower to allow other cables to pass.

-Supports towers with a 48" face width (center to center of leg) and 1.5"-3" Diameter Legs.

-Additional units can be installed along the tower face as needed to support additional cables.

-Not to be used for hoisting.  
-Competent person to make determination of usage on the structure.

## Product Classification

<b>Portfolio</b>	CommScope®
<b>Product Type</b>	Hoisting Grip Anchor
<b>Ordering Note</b>	CommScope® standard product with terms
<b>Warranty</b>	One year

## General Specifications

<b>Cable Runs, quantity</b>	3
<b>Mounting</b>	Round member

## Material Specifications

<b>Material Type</b>	Hot dip galvanized steel
----------------------	--------------------------

## Packaging and Weights

<b>Included</b>	Attachment kits
<b>Packaging quantity</b>	1

# 860674607-048 | HG ANCHOR,GUYED-TOWER, 48" FACE

---

## Included Products

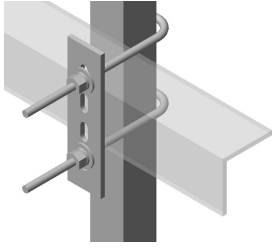
- HK-CL-U – Universal Cable Ladder Hardware Kit for 1 in to 4-1/2 in round or angle members

## \* Footnotes

### **Warranty**

For more information, please consult our Product Warranty guidelines

# HK-CL-U



Universal Cable Ladder Hardware Kit for 1 in to 4-1/2 in round or angle members

## Product Classification

<b>Portfolio</b>	CommScope®
<b>Product Type</b>	Ladder kit
<b>Ordering Note</b>	CommScope® standard product (Global)

## General Specifications

<b>Cable Runs, quantity</b>	0
<b>Mounting</b>	Round and angle legs

## Dimensions

<b>Height</b>	203.2 mm   8 in
<b>Width</b>	127 mm   5 in
<b>Length</b>	203.2 mm   8 in
<b>Mounting Diameter, maximum</b>	114.3 mm   4.5 in
<b>Mounting Diameter, minimum</b>	25.4 mm   1 in

## Material Specifications

<b>Material Type</b>	Hot dip galvanized steel
----------------------	--------------------------

## Packaging and Weights

<b>Included</b>	J-bolts   Plates
<b>Packaging quantity</b>	1
<b>Weight, net</b>	1.7 kg   3.748 lb

## Regulatory Compliance/Certifications

<b>Agency</b>	<b>Classification</b>
CHINA-ROHS	Above maximum concentration value
ISO 9001:2015	Designed, manufactured and/or distributed under this quality management system

# HK-CL-U

---

ROHS Compliant/Exempted

UK-ROHS Compliant/Exempted

