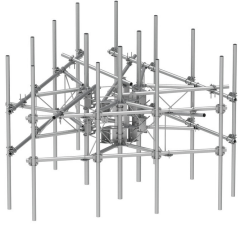


# MCG22RHDX-15M15120



G22RHDX Monopole Sector Frame with spine extension for RRU Mounting, 15 ft x 2.88 in OD face pipes. includes fifteen 2.88 OD x 120 in antenna pipes

- Extended spine for MCG22 RHDX mounts that decrease PIM from radio relocation
- Increased versatility and stability
- Updated frame provides higher loading
- More RRU mounting available, reducing need for additional mounts
- Better load management
- Less structure stress
- Can be used in combination with APEX RRU mounts

## Product Classification

|                       |                                     |
|-----------------------|-------------------------------------|
| <b>Product Type</b>   | High capacity monopole sector frame |
| <b>Product Brand</b>  | PIM-guard                           |
| <b>Product Series</b> | G2                                  |

## General Specifications

|                          |                                     |
|--------------------------|-------------------------------------|
| <b>Mounting</b>          | Monopole, 381–1270 mm (15–50 in) OD |
| <b>Pipe, quantity</b>    | 15                                  |
| <b>Sectors, quantity</b> | 3                                   |

## Dimensions

|                                   |                      |
|-----------------------------------|----------------------|
| <b>Face Width</b>                 | 4,572 mm   15 ft     |
| <b>Platform Width</b>             | 4,572 mm   180 in    |
| <b>Pipe Length</b>                | 3,048 mm   120 in    |
| <b>Face Support Pipe Diameter</b> | 73.025 mm   2.875 in |
| <b>Mounting Diameter, maximum</b> | 1270 mm   50 in      |
| <b>Mounting Diameter, minimum</b> | 381 mm   15 in       |
| <b>Pipe Outer Diameter</b>        | 73.025 mm   2.875 in |
| <b>Stand-off Distance</b>         | 1,066.8 mm   42 in   |

## Material Specifications

|                      |                          |
|----------------------|--------------------------|
| <b>Material Type</b> | Hot dip galvanized steel |
|----------------------|--------------------------|

# MCG22RHDX-15M15120

---

## Mechanical Specifications

|                                |  |
|--------------------------------|--|
| <b>Wind Rating</b>             | For Specifications, please contact <a href="mailto:steelproducts@commscope.com">steelproducts@commscope.com</a> or call 800-255-1479 |
| <b>Wind Rating Test Method</b> | TIA/EIA-222  |

## Packaging and Weights

|                           |   |
|---------------------------|---|
| <b>Included</b>           | Mounting hardware   Plain end pipes   Ring mounts (2)   Sector frames (3)   Stiff arm |
| <b>Packaging quantity</b> | 1   |
| <b>Weight, net</b>        | 1,446.715 kg   3,189.46 lb  |

## \* Footnotes

|                    |  |
|--------------------|--|
| <b>Wind Rating</b> | BWS—Base Wind Speed; FBC—Florida Building Code |
|--------------------|--|