

4

3

2

1

- 1.0 GENERAL NOTES
 1.1 ALL METRIC DIMENSIONS ARE IN BRACKETS [X.X]
 1.2 FOR PATENT INFO: <https://www.cs-pat.com>
 2.0 DESIGN NOTES
 3.0 MANUFACTURING/SPECIAL REQUIREMENTS
 3.1 TIGHTEN ALL BOLTS SECURING FLAT PLATES BY THE TURN-OF-NUT METHOD. TIGHTEN ALL U-BOLTS USING TURN-OF-NUT METHOD WITH ATTENTION TO LEAVE EQUAL DISTANCE AND EQUAL FORCE ON EACH LEG OF THE U-BOLT.
 3.2 3 BOLTS AT EACH PANEL CONNECTION.
 3.3 MINIMUM 45 FT-LBS OF TORQUE ON CABLE CLIPS.
 3.4 MUST HAVE ALL 7 GUY CABLE LOCATIONS.
 3.5 BRACKETS ARE MODEL DEPENDENT. BRACKETS CAN BE MOUNTED TO SIDES OR REAR.
 4.0 TEST
 5.0 PACKAGING
 5.1 PACKAGING SHALL MEET COMMSCOPE REQUIREMENTS PER DOCUMENT IS-PL-3005
 5.2 PRINTED DOCUMENT TO BE PLACED INSIDE POLYBAG AND THEN IN SHIPPING CONTAINER
 5.3 EXTRA HARDWARE MAY BE SUPPLIED, BAGGED AND SHIPPED

REVISIONS			
REV.	DESCRIPTION	DATE	APPROVED
A	INITIAL RELEASE	YX1027 09AUG24	BA1025 40202084CMO

D

D

C

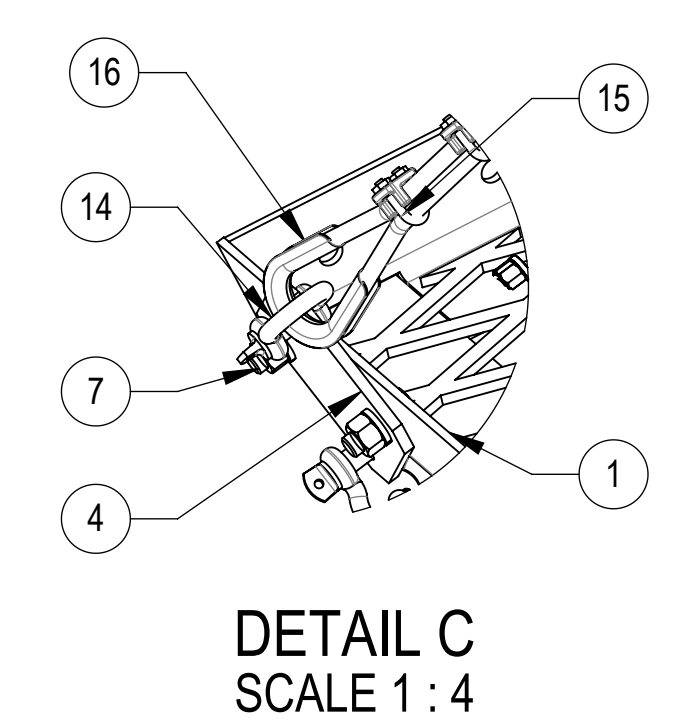
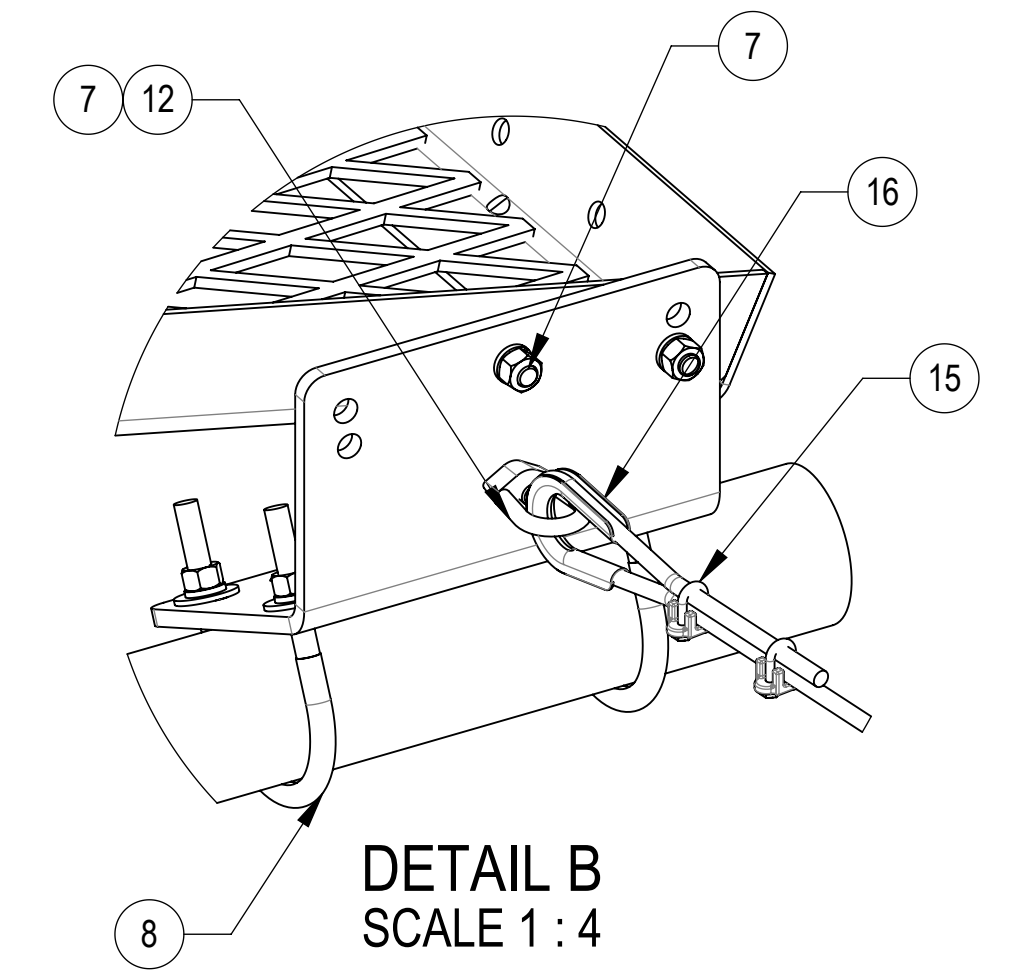
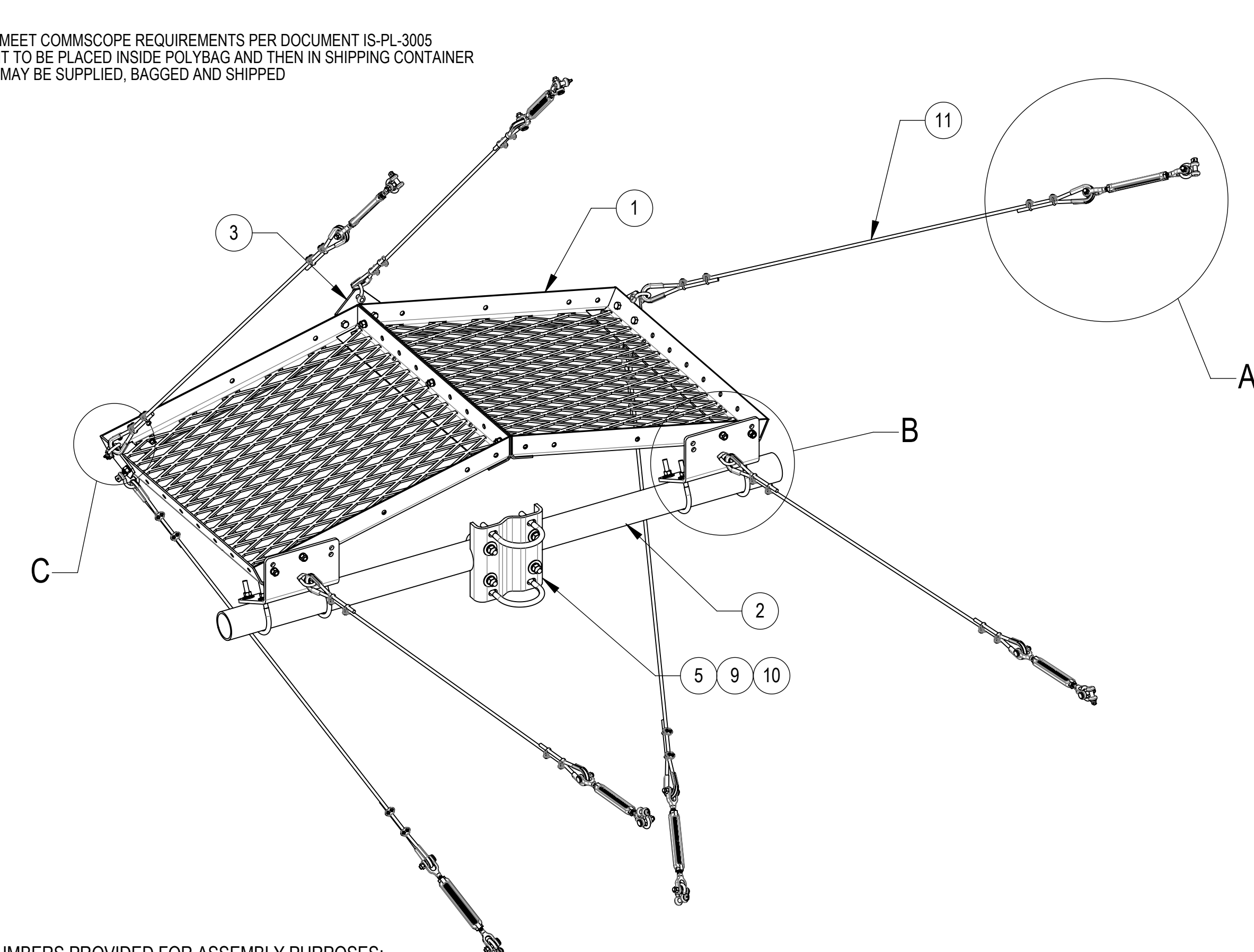
C

B

B

A

A



COMPONENT PART NUMBERS PROVIDED FOR ASSEMBLY PURPOSES;
 INDIVIDUAL COMPONENTS MAY BE SHIPPED AS PARTS WITHIN AN INCLUDED KIT.

ITEM	PART NO.	DESCRIPTION	QTY.	WEIGHT	NOTE NO.
1	MDS01	3' X 3' PANEL	2	69.40 LBS	
2	MT54775	3 1/2" O.D. X 6'-3" GALV. PIPE	1	47.10 LBS	
3	MDS15	CENTER PLATE	1	1.58 LBS	
4	MDS17	SHACKLE PLATE	2	1.32 LBS	
5	MT21613	CENTER BRACKET	1	11.80 LBS	
6	MDS20	SIDE BRACKET	2	13.15 LBS	3.5
7	GB-04125	1/2" X 1-1/4" GALV BOLT KIT	15	0.12 LBS	
8	GUB-4356	1/2" X 3-5/8" X 6" GALV U-BOLT KIT	4	0.88 LBS	
9	GUB-53560	5/8" X 3-5/8" X 6" GALV U-BOLT	2	1.30 LBS	
10	GUB-5456	5/8" X 4-5/8" X 6 1/2" GALV U-BOLT	2	1.43 LBS	
11	MT-297	7 X 19 3/8 (200 FOOT) WIRE ROPE	1	2.46 LBS	
12	MT-309	EYE NUT 3/8" WITH 1/2" THREAD	2	0.26 LBS	
13	MT-320	1/2" X 6" LONG JAW-JAW TURNBUCKLE	7	1.79 LBS	
14	MT-345	3/8 SHACKLE	12	0.33 LBS	
15	MT-326	3/8" CABLE CLIP	28	0.08 LBS	
16	MT-303	3/8" OPEN THIMBLE GALV	14	0.12 LBS	

DENSITY	lbs/in ³
MASS	lbs
VOLUME	in ³
SURFACE AREA	in ²
HEIGHT	112"
LENGTH	126"
WIDTH	97"

© 2024 CommScope, Inc. Confidential

COMMSCOPE, INC. OF NORTH CAROLINA

TOLERANCES		SAP MATERIAL MASTER	
1 PLACE .X[X] ± 0.2[6.3]	3 PLACE .XXX[X] ± 0.060[1.5]	MD-S3	
2 PLACE .XX[X] ± 0.12[3.0]	ANGLES ± 2°		
FINISH		MATERIAL	
UNLESS OTHERWISE SPECIFIED DIMENSIONS ARE IN INCHES INTERPRET PER ANSI Y 14.5M-1994		TITLE	
CE	YX1027	09AUG24	MICROWAVE DISH SHIELD, 3' ANTENNA
RW	YMENG	08/15/2024	
AD	BA1025	08/16/2024	
RE	YX1027	08/16/2024	
ECN 40202084CMO		SCALE	DOCUMENT NO.
		1:24	MD-S3
SIZE	Auth Group	INSL	MODEL
C			
VERSION		STATUS	REVISION
01		RE	M
DRAWING		VERSION	STATUS
		00	RE
SHEET		REVISION	
1 OF 3		A	

4

3

2

1

4

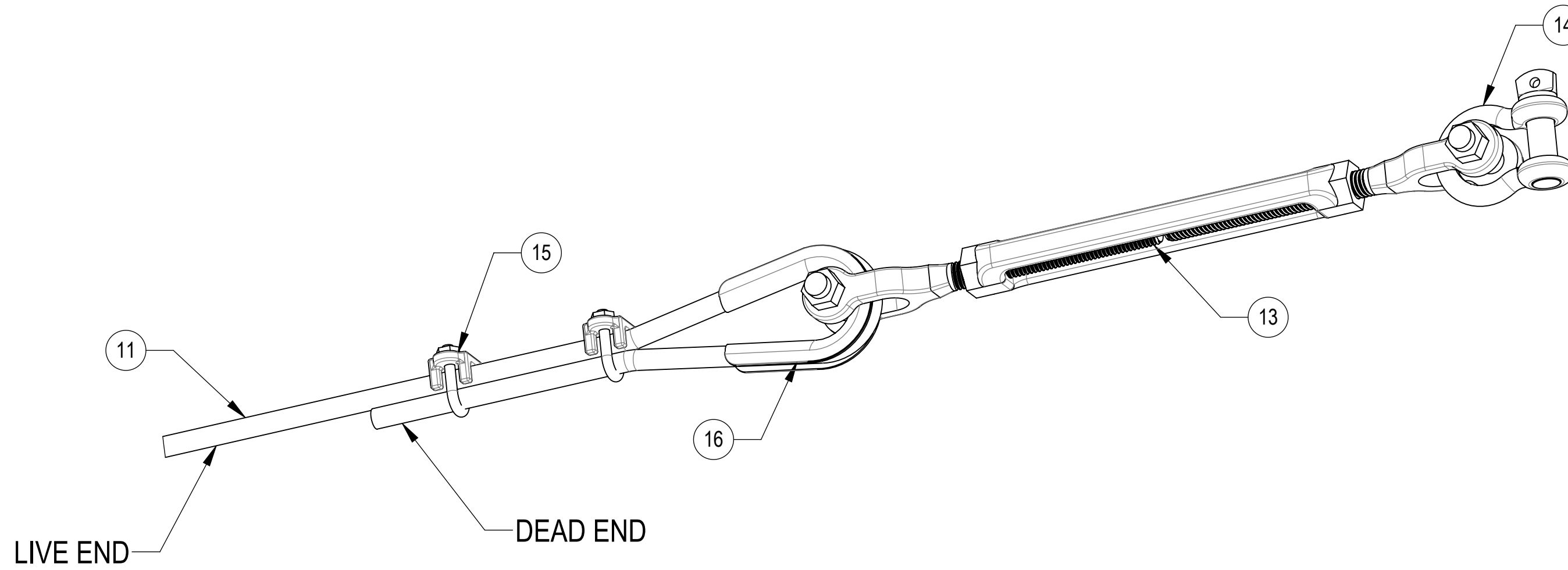
3

2

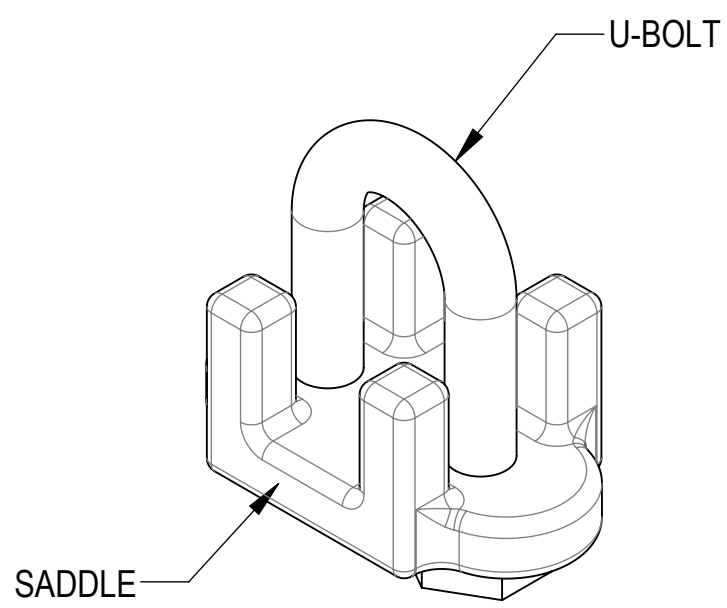
1


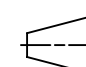
NOTES:

- 1. WIRE ROPE TURN-BACK SHOULD BE 6 1/2" MINIMUM
- 2. APPLY CABLE CLAMP AS SHOWN (SADDLE ON LIVE END OF CABLE)
- 3. USE TORQUE WRENCH TO TIGHTEN U-BOLT EVENLY TO 45LB/FT.
- 4. CABLE CLIPS SHOULD BE 1" FROM END AND 1" FROM THIMBLE.



DETAIL A
SCALE 1 : 2



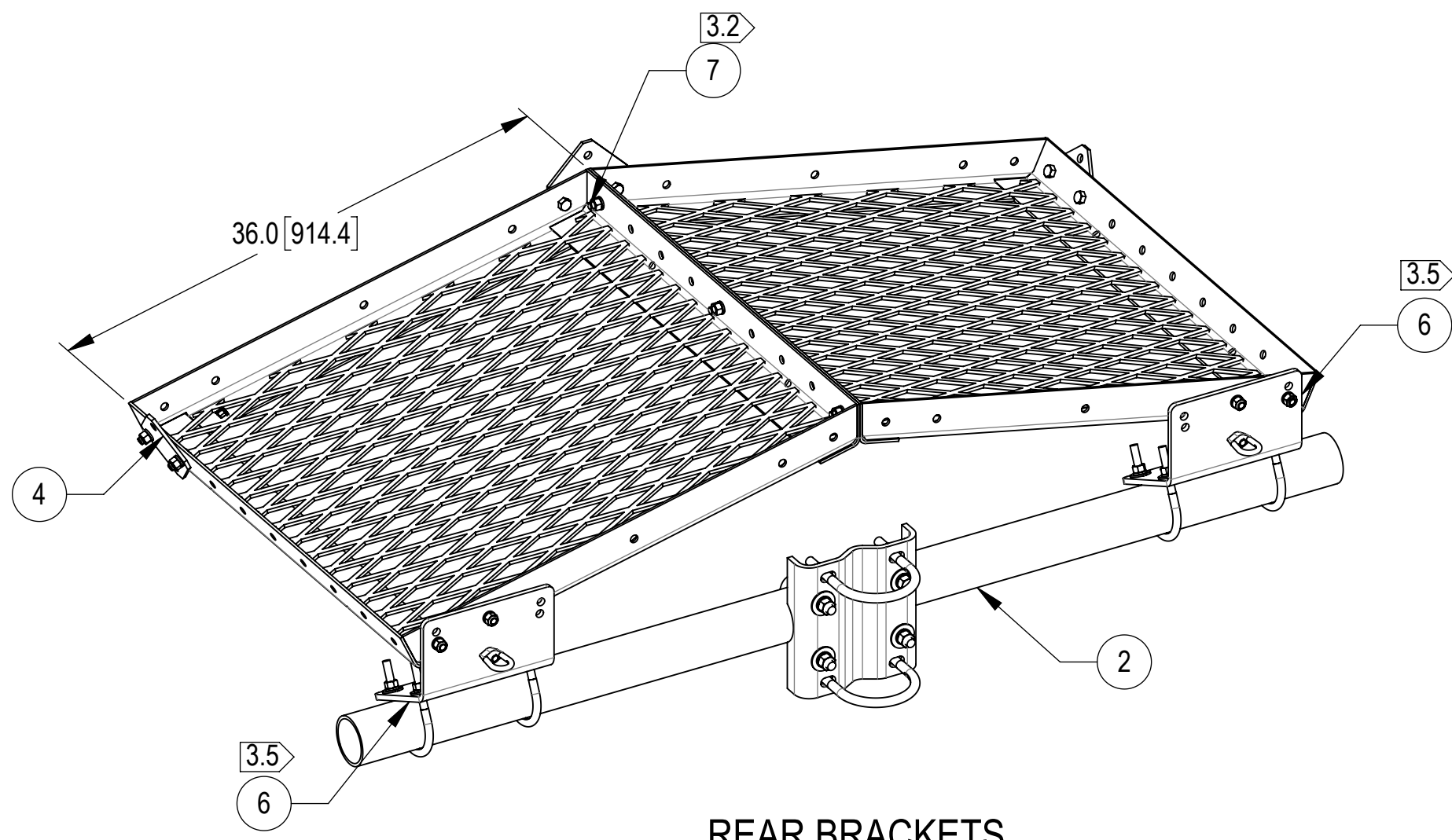
COMMSCOPE, INC. OF NORTH CAROLINA				
TITLE MICROWAVE DISH SHIELD, 3' ANTENNA				
SIZE C	SCALE 1:24	DOCUMENT NO. MD-S3		
 		DRAWING		SHEET 2 OF 3
		VERSION 00	STATUS RE	

4

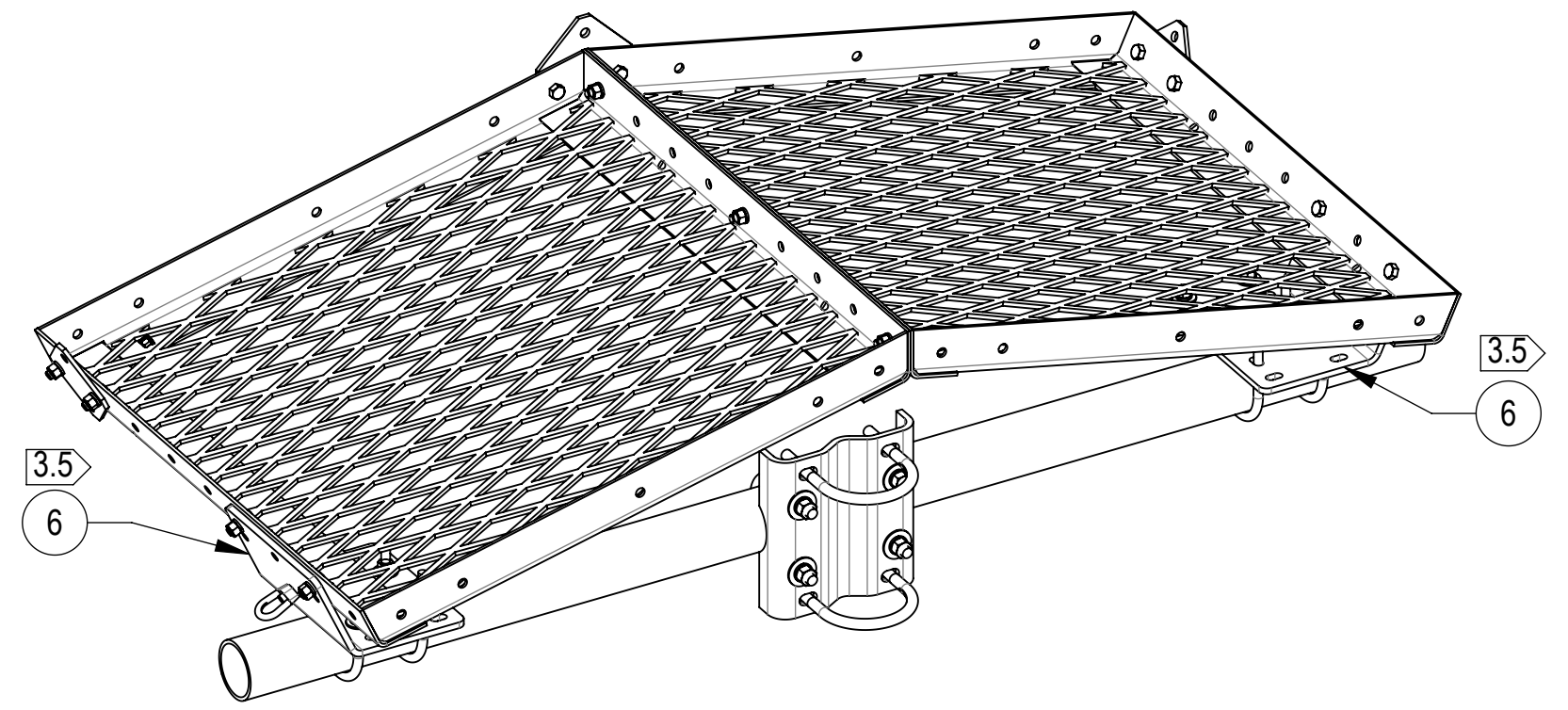
3

2

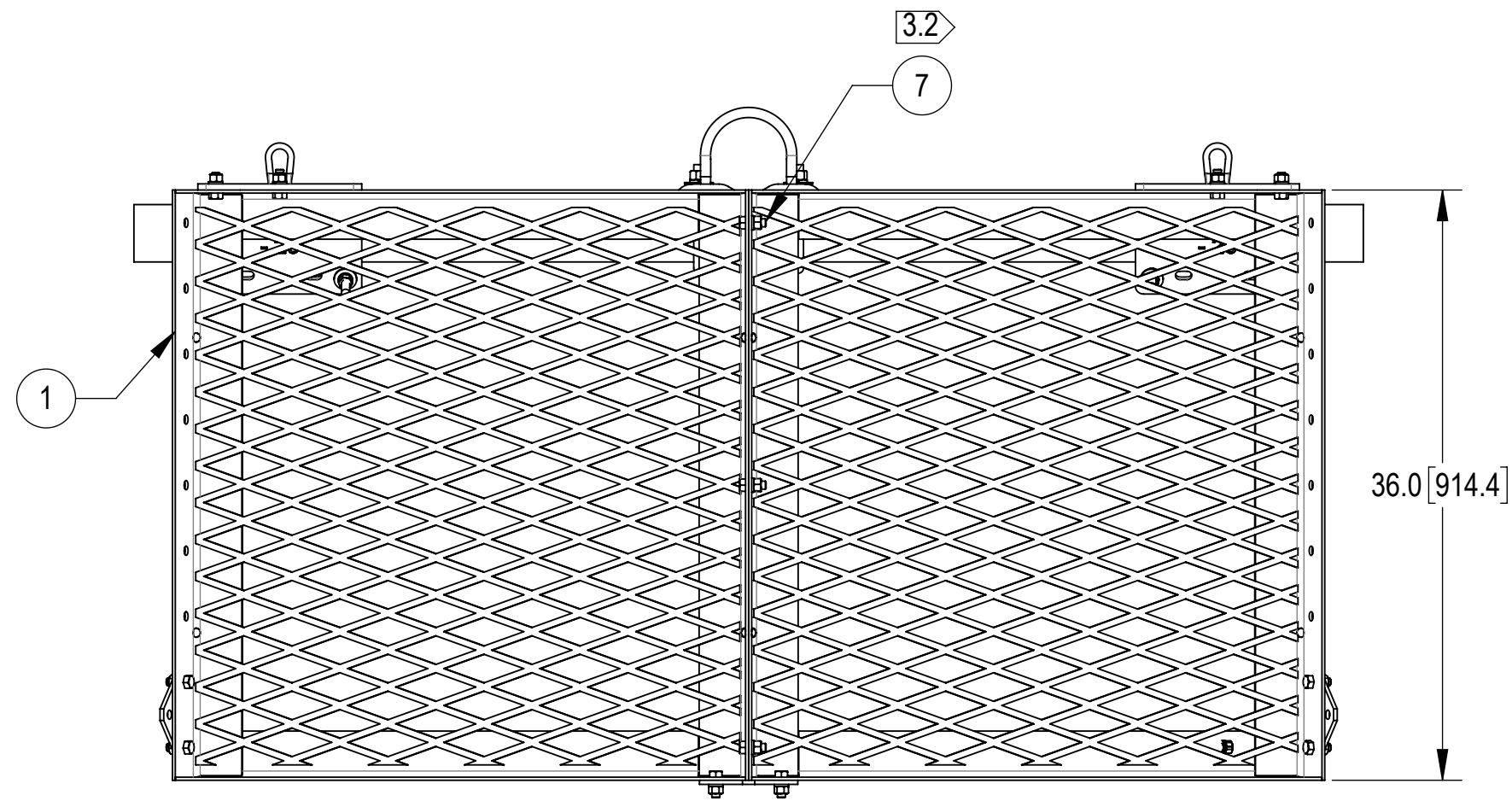
1


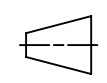


REAR BRACKETS



SIDE BRACKETS



COMMSCOPE, INC. OF NORTH CAROLINA				
TITLE MICROWAVE DISH SHIELD, 3' ANTENNA				
SIZE C	SCALE 1:24	DOCUMENT NO. MD-S3		
 		DRAWING		SHEET 3 OF 3
		VERSION 00	STATUS RE	