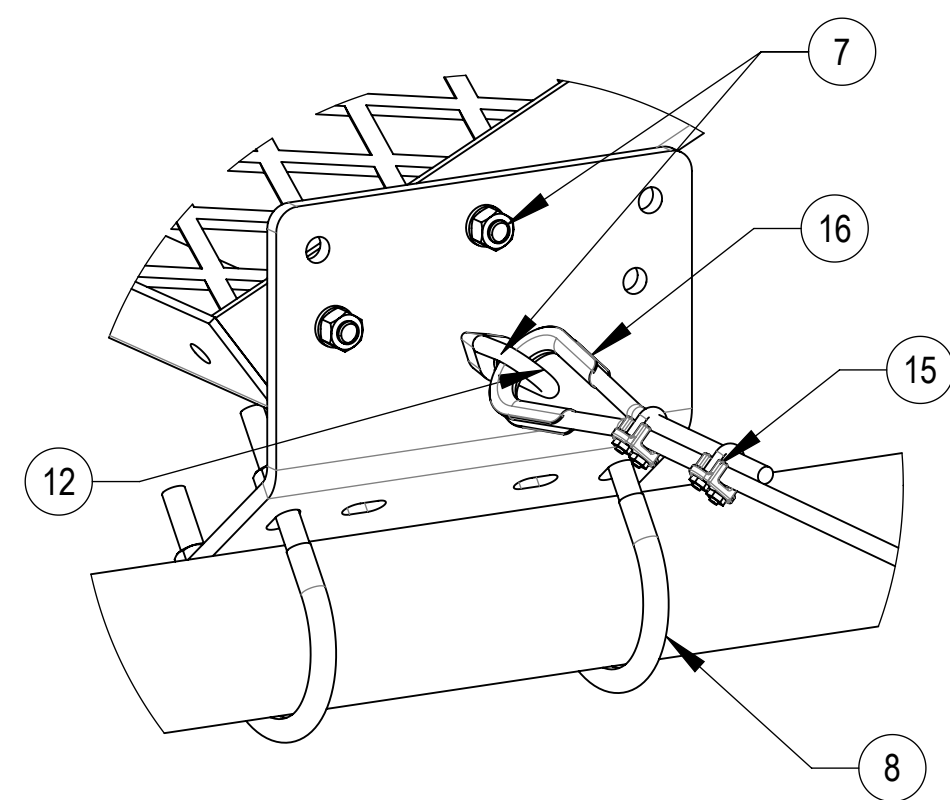
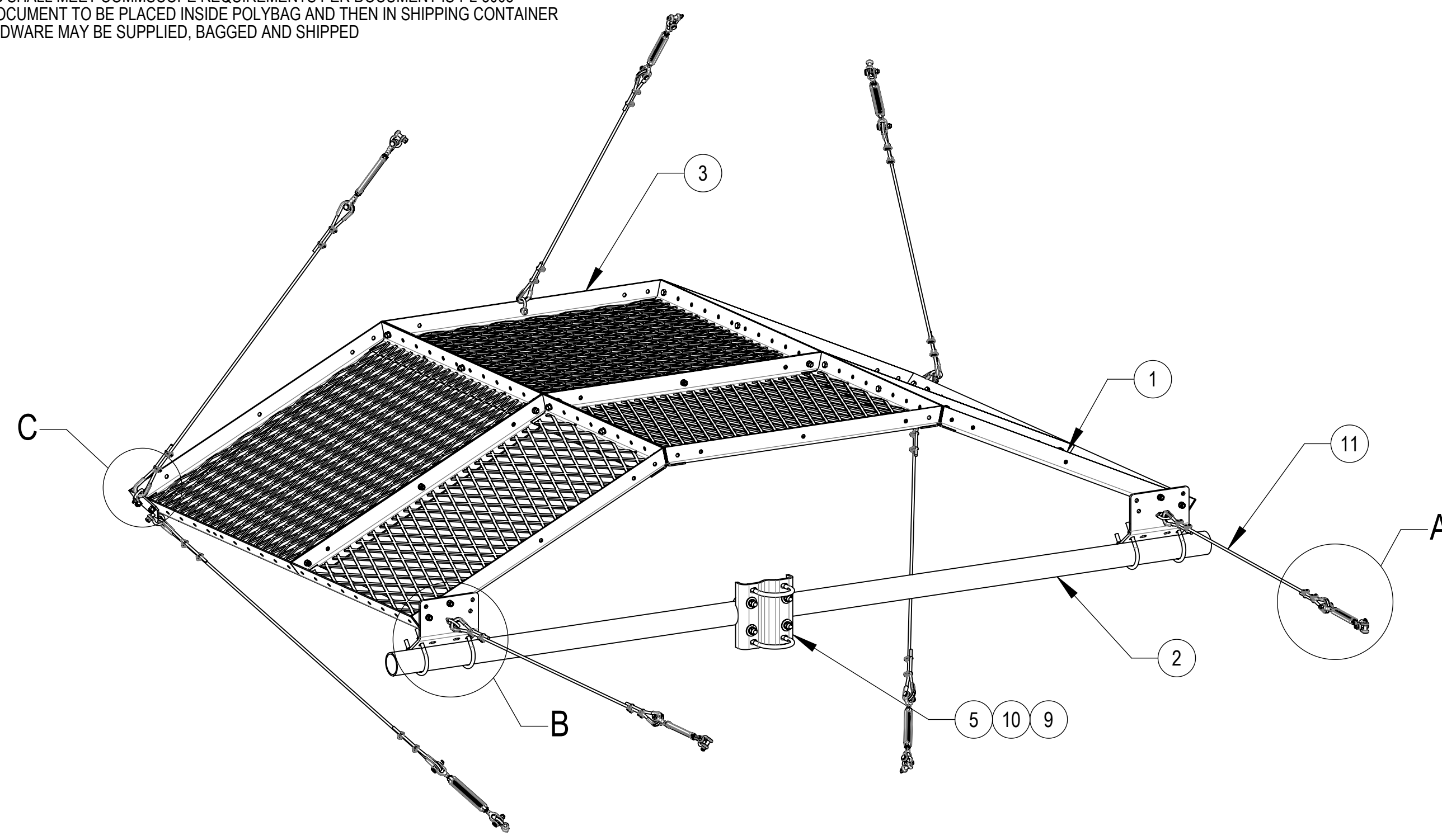
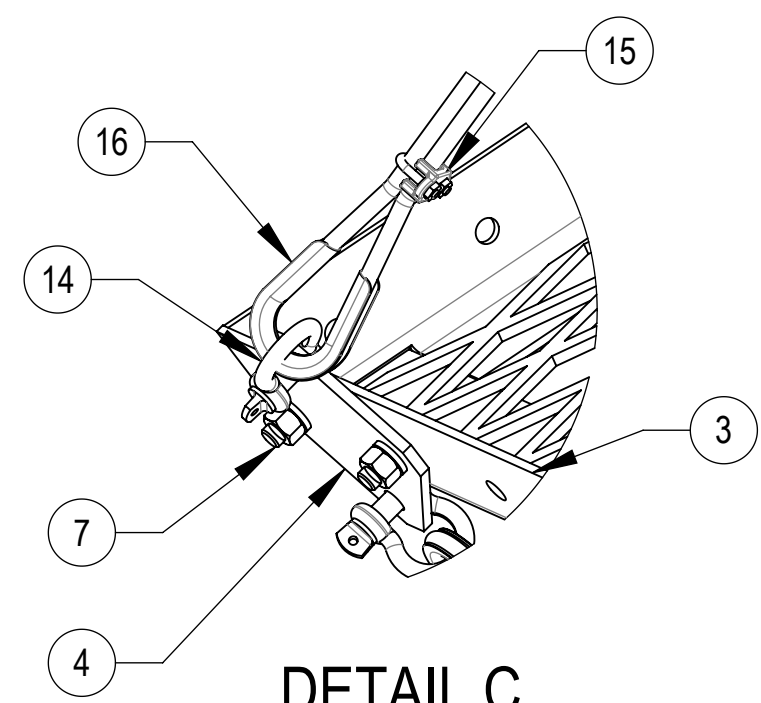


- 1.0 GENERAL NOTES
  - 1.1 ALL METRIC DIMENSIONS ARE IN BRACKETS [X. X]
  - 1.2 FOR PATENT INFO: <https://www.cs-pat.com>
- 2.0 DESIGN NOTES
- 3.0 MANUFACTURING/SPECIAL REQUIREMENTS
  - 3.1 TIGHTEN ALL BOLTS SECURING FLAT PLATES BY THE TURN-OF-NUT METHOD. TIGHTEN ALL U-BOLTS USING TURN-OF-NUT METHOD WITH ATTENTION TO LEAVE EQUAL DISTANCE AND EQUAL FORCE ON EACH LEG OF THE U-BOLT.
  - 3.2 >3 BOLTS AT EACH PANEL CONNECTION.
  - 3.3 MINIMUM 45 FT-LBS OF TORQUE ON CABLE CLIPS.
  - 3.4 MUST HAVE ALL 7 GUY CABLE LOCATIONS.
  - 3.5 >BRACKETS ARE MODEL DEPENDENT. BRACKETS CAN BE MOUNTED TO SIDES OR REAR.
- 4.0 TEST
- 5.0 PACKAGING
  - 5.1 PACKAGING SHALL MEET COMMSCOPE REQUIREMENTS PER DOCUMENT IS-PL-3005
  - 5.2 PRINTED DOCUMENT TO BE PLACED INSIDE POLYBAG AND THEN IN SHIPPING CONTAINER
  - 5.3 EXTRA HARDWARE MAY BE SUPPLIED, BAGGED AND SHIPPED

REVISIONS			
REV.	DESCRIPTION	DATE	APPROVED
D	INITIAL RELEASE	DRR 01MAR11	TP
E	REDRAWN IN SW	YX1027 09AUG24	BA1025 40202084CMO



DETAIL B  
SCALE 1 : 4



DETAIL C  
SCALE 1 : 4

COMPONENT PART NUMBERS PROVIDED FOR ASSEMBLY PURPOSES;  
INDIVIDUAL COMPONENTS MAY BE SHIPPED AS PARTS WITHIN AN INCLUDED KIT.

ITEM NO.	PART NUMBER	DESCRIPTION	QTY.	WEIGHT	NOTE NO.
1	MDS03	48" X 36" PANEL	3	87.02 LBS	
2	MT547140	3 1/2" O.D. X 11'-8" GALV. PIPE	1	88.70 LBS	
3	MDS04	48"X48" PANEL FOR DISH SHIELDS	3	108.52 LBS	
4	MDS17	SHACKLE PLATE	2	1.32 LBS	
5	MT21613	CENTER BRACKET	1	11.80 LBS	
6	MDS21	CENTER PLATE	2	13.14 LBS	3.5
7	GB-04125	1/2" X 1-1/4" GALV BOLT KIT	31	0.12 LBS	
8	GUB-4356	1/2" X 3-5/8" X 6" GALV U-BOLT KIT	4	0.88 LBS	
9	GUB-53560	5/8" X 3-5/8" X 6" GALV U-BOLT	2	1.30 LBS	
10	GUB-5456	5/8" X 4-5/8" X 6 1/2" GALV U-BOLT	2	1.43 LBS	
11	MT-297	7 X19 3/8 (200 FOOT) WIRE ROPE	1	2.46 LBS	
12	MT-309	EYE NUT 3/8" WITH 1/2" THREAD	2	0.26 LBS	
13	MT-320	1/2" X 6" LONG JAW-JAW TURNBUCKLE	7	1.788 LBS	
14	MT-345	3/8 SHACKLE	12	0.33 LBS	
15	MT-326	3/8" CABLE CLIP	28	0.08 LBS	
16	MT-303	3/8" OPEN THIMBLE GALV	14	0.12 LBS	

DENSITY	770.55	lbs/in <sup>3</sup>
MASS	770.55	lbs
VOLUME	2714.68	in <sup>3</sup>
SURFACE AREA	30385.92	in <sup>2</sup>
HEIGHT	119"	
LENGTH	141"	
WIDTH	157"	

© 2024 CommScope, Inc. Confidential

<b>COMMSCOPE, INC. OF NORTH CAROLINA</b>									
TOLERANCES					SAP MATERIAL MASTER				
1 PLACE .X[X] ± 0.12[3.0]			3 PLACE .XXX[X] ± 0.031[0.8]		<b>MD-S10</b>				
2 PLACE .XX[X] ± 0.06[1.5]			ANGLES ± 2°						
FINISH					MATERIAL				
<b>MICROWAVE DISH SHIELD, 10' ANTENNA</b>									
SCALE		DOCUMENT NO.							
<b>1:50</b>		<b>MD-S10</b>							
SIZE		Auth Group		INSL		MODEL		DRAWING	
<b>C</b>		[Symbol]		[Symbol]		[Symbol]		[Symbol]	
VERSION		STATUS		REVISION		VERSION		STATUS	
01		RE		M		01		RE	
SHEET		1 OF 3							

4

3

2

1

NOTES:

- 1. WIRE ROPE TURN-BACK SHOULD BE 6 1/2" MINIMUM
- 2. APPLY CABLE CLAMP AS SHOWN (SADDLE ON LIVE END OF CABLE)
- 3. USE TORQUE WRENCH TO TIGHTEN U-BOLT EVENLY TO 45LB/FT.
- 4. CABLE CLIPS SHOULD BE 1" FROM END AND 1" FROM THIMBLE.

LIVE END

11

15

16

DEAD END

13

DETAIL A  
SCALE 1:1

14


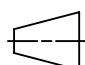
U-BOLT

SADDLE

COMMSCOPE, INC. OF NORTH CAROLINA

TITLE  
MICROWAVE DISH SHIELD, 10' ANTENNA

SIZE <b>C</b>	SCALE <b>1:100</b>	DOCUMENT NO. <b>MD-S10</b>
------------------	-----------------------	-------------------------------

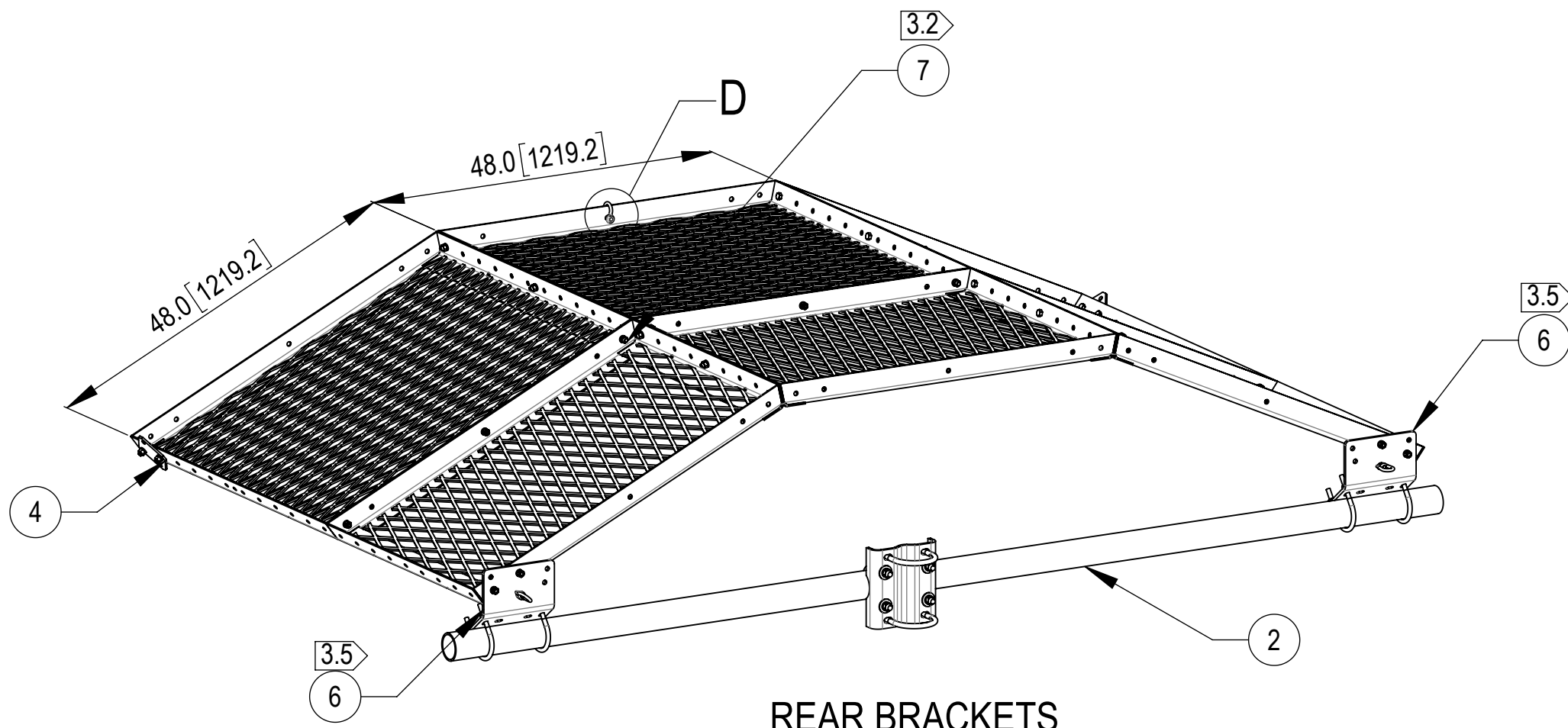
 	DRAWING			SHEET 2 OF 3
	VERSION 01	STATUS RE	REVISION E	

4

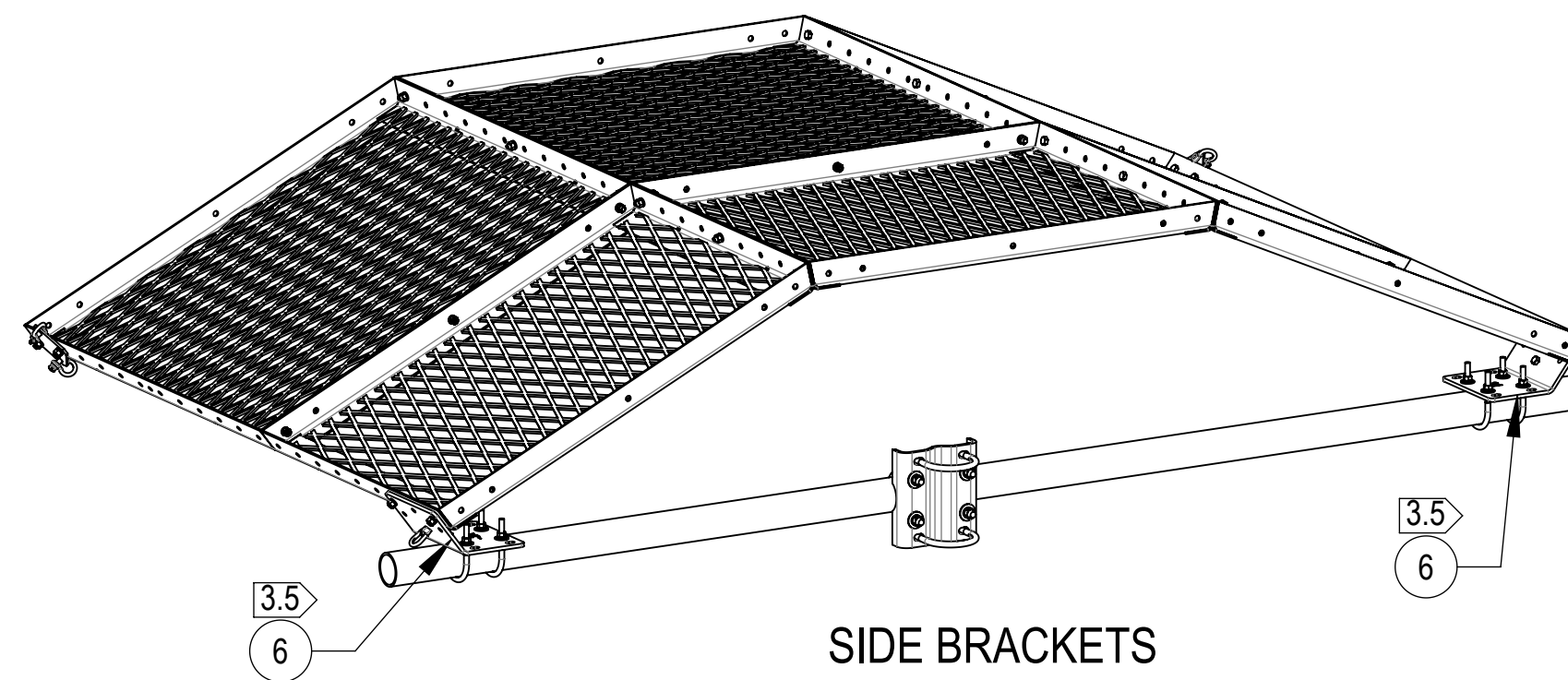
3

2

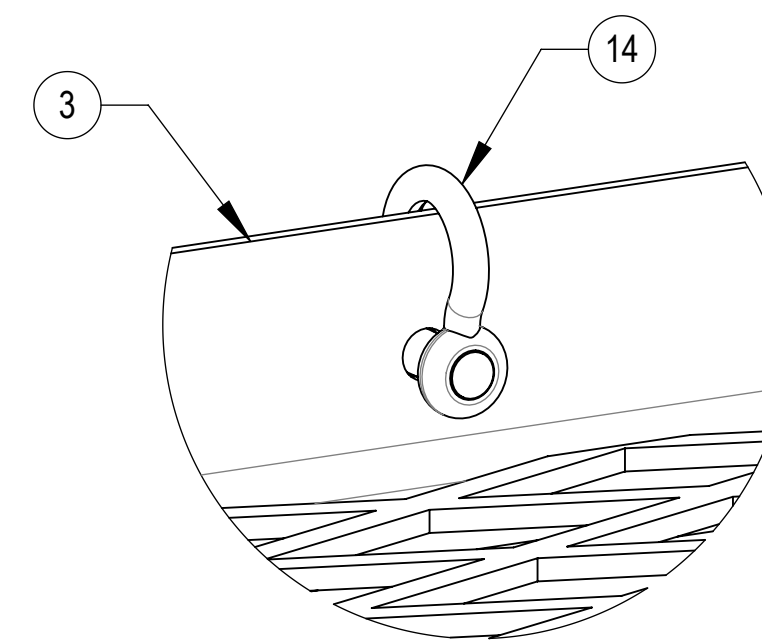
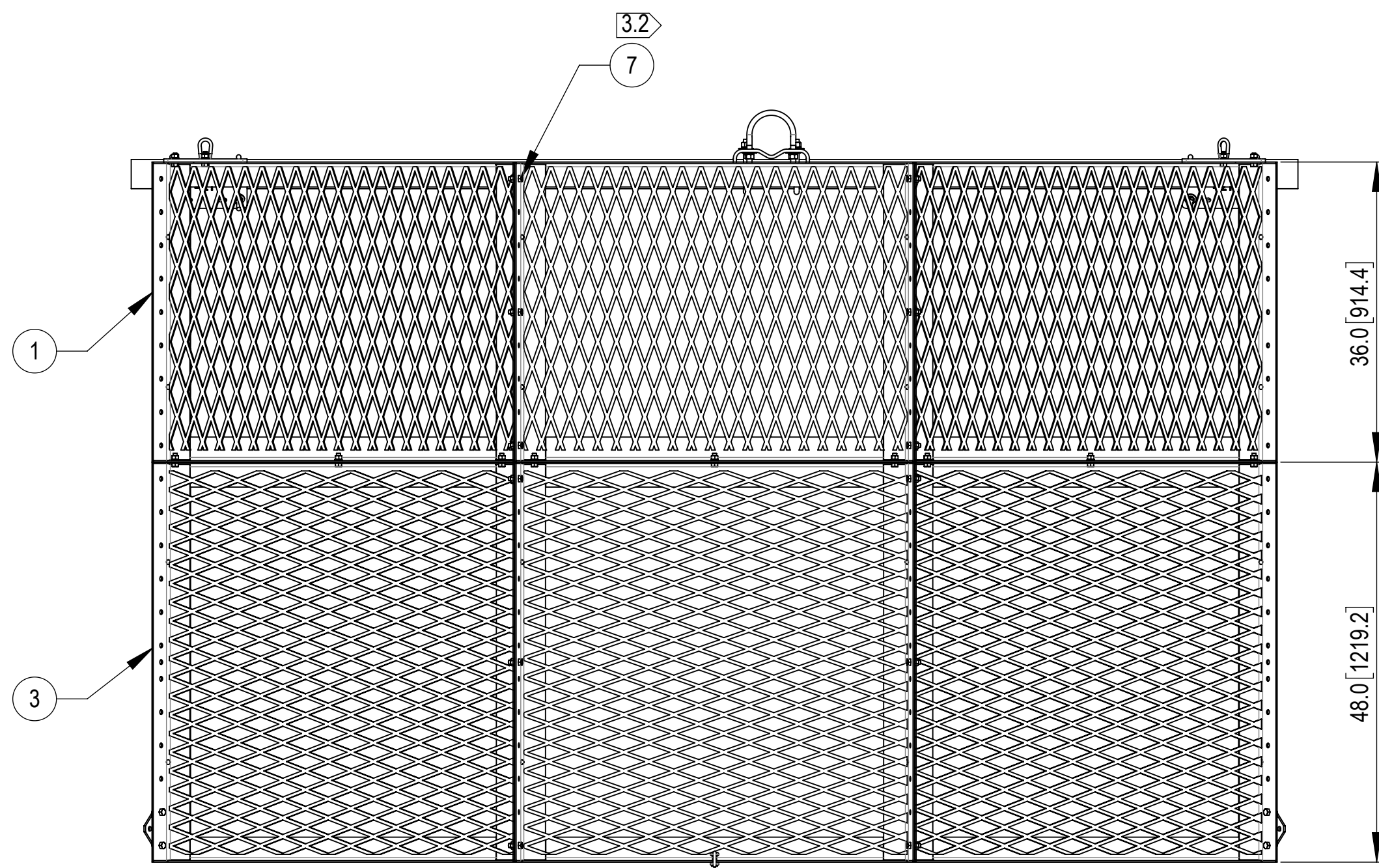
1



REAR BRACKETS



SIDE BRACKETS



DETAIL D  
SCALE 1:2

COMMSCOPE, INC. OF NORTH CAROLINA				
TITLE MICROWAVE DISH SHIELD, 10' ANTENNA				
SIZE C	SCALE 1:50	DOCUMENT NO. MD-S10		
		DRAWING		SHEET
		VERSION	STATUS	REVISION
		01	RE	E
				SHEET 3 OF 3