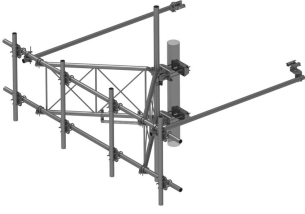


SFG23RHDXL12-4-96



G23RHDXL PIM OPTIMIZED SPACING High Capacity Sector Frame with extended 10' Spine for RRU Mounting & extended frame for sites requiring increased sector to sector antenna spacing. 2 7/8in OD x 12.5ft face with (4) 2-7/8in OD x 96in Antenna pipes

Product Classification

| | |
|-----------------------|----------------------------------|
| Product Type | High capacity Tower sector frame |
| Product Brand | PIM-guard |
| Product Series | G2 |

General Specifications

| | |
|--------------------------|--|
| Mounting | Angle 60°, 203.2 mm (8 in) Straight or tapered legs up to 203.2 mm (8 in) OD |
| Patent Number | For patents see: www.cs-pat.com |
| Pipe, quantity | 4 |
| Sectors, quantity | 1 |
| Tower Taper | Non-tapered Tapered |

Dimensions

| | |
|-----------------------------------|----------------------|
| Height | 2,438.4 mm 96 in |
| Face Width | 3.81 m 12.5 ft |
| Platform Width | 3,810 mm 150 in |
| Face Support Pipe Diameter | 73.025 mm 2.875 in |
| Mounting Diameter, maximum | 203.2 mm 8 in |
| Mounting Diameter, minimum | 38.1 mm 1.5 in |
| Pipe Outer Diameter | 73.025 mm 2.875 in |

Material Specifications

| | |
|----------------------|--------------------------|
| Material Type | Hot dip galvanized steel |
|----------------------|--------------------------|

Mechanical Specifications

| | |
|--------------------------------|--|
| Wind Rating | For Specifications, please contact steelproducts@commscope.com or call 800-255-1479 |
| Wind Rating Test Method | TIA/EIA-222-G |

SFG23RHDXL12-4-96

Packaging and Weights

Included Frame | Plain end pipes (4) | Stiff arms (2) | Tower attachment
Packaging quantity 1

* Footnotes

Wind Rating BWS—Base Wind Speed; FBC—Florida Building Code