

SYSTIMAX[®]
COMMSCOPE

GigaSHIELD™ X10D Category 6A solution

Endless Innovation





Expect more from your Cat 6A shielded solution— and partner.

The rise of the hyperconnected, AI-enabled enterprise has created new challenges for network managers, especially where shielded Category 6A cabling is used. As more data-intensive devices and systems are deployed, the copper access layer is expected to provide more of everything:

More effective shielding that consistently meets throughput and latency requirements

More streamlined processes to accelerate deployment, change management and scaling

More design flexibility to quickly modify and reconfigure channels—indoors and out

More automated network intelligence to driver faster, more accurate decision making

More manageable jumpers that are thinner and easier to handle and connect

More end-to-end thinking that transforms individual components into a unified platform

More sustainability, from eco-friendly/installer-friendly packaging to energy savings

Enterprise network managers must choose not only the right solution but the right partner. When it comes to Cat 6A shielded solutions, one portfolio and one provider stand out. The GigaSHIELD X10D Category 6A solution by CommScope.

The GigaSHIELD X10D platform from SYSTIMAX

The GigaSHIELD X10D solution is a complete shielded Cat 6A platform that gives you more of everything that matters. Optimal shielding, design flexibility, fast deployment, easy management and sustainability. Manufactured and tested to exceed the standards-based specifications for channel performance, it is ideal for light industrial and high-security environments and those transitioning to Industry 4.0/5.0.

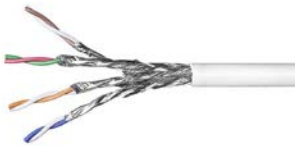
Available in F/UTP, F/FTP or S/FTP designs, the GigaSHIELD X10D solution is designed to provide optimal EMI / RFI rejection and optimal pair balance without degrading channel performance. Compared to legacy shielded Cat 6A solutions, the GigaSHIELD

X10D solution delivers vastly improved cross talk, insertion loss and channel performance across the complete frequency spectrum, 1 MHz to 500 MHz.

The new platform also delivers the unexpected. GigaSHIELD X10D patch panels integrate with SYSTIMAX imVision® and VisiPORT™ network intelligence solutions to deliver the visibility and intelligence needed to maximize operational efficiency and sustainability. The panels also support SYSTIMAX InstaPATCH® preterminated connectivity, enabling you to reduce installation time to a fraction of the time needed for field-terminated solutions.

The GigaSHIELD X10D portfolio

As an end-to-end solution, the GigaSHIELD X10D portfolio includes F/UTP, F/FTP and S/FTP Cat 6A cabling, easy-to-handle MiNo patch cords and new, compact MGS600S M-series jacks with matching faceplates. All components are designed to work together, providing you with one solution for all your Cat 6A shielded applications, inside and out.



Cat 6A shielded cabling

- F/UTP, F/FTP and S/FTP options provide optimal EMI / RFI rejection
- Meets or exceeds the latest ISO/IEC Class E_A cabling specification
- Supports network line speeds up to 10 Gbps and beyond



Patch panels

- 24-port (1U) and 48-port (2U) sizes, straight and angled faces
- Available empty (for preterminated installations) or preloaded with the new MS600S jacks
- Supports InstaPATCH preterminated connectivity and VisiPORT and imVision intelligence



MiNo patch cords

- Slim, easy-to-handle 5.82 mm (0.229 inch) outside diameter
- Less performance variation and excellent end-to-end signal integrity
- Modular design



MGS600S jacks

- RJ45 outlet jack with a compact M-series footprint
- Installs quickly, accurately and consistently with SYSTIMAX universal termination tool
- Available in seven colors



Faceplates

- Made of high-impact, flame-retardant thermoplastic or stainless steel
- Thermoplastic available in seven colors
- All faceplates compatible with the new MGS600S jacks



Surface-mount boxes

- UL rated and specifically designed for copper connectivity and termination
- One-, two-, four-, six-, and 12-outlet configurations in a variety of colors
- Plenum- and non-plenum-rated options



SYSTIMAX imVision
and VisiPORT

Add the power of intelligence

The GigaSHIELD X10D platform also enables you to leverage the actionable insights of SYSTIMAX imVision and VisiPORT automated intelligence solutions. So, you can extract more value and productivity from your network cabling and hardware.

With an intuitive, web-based architecture, imVision enables you to monitor and document your cabling infrastructure while tracking the location of all connected network devices. It delivers

actionable, real-time data and performance insights that enable you to optimize capacity, availability and efficiency.

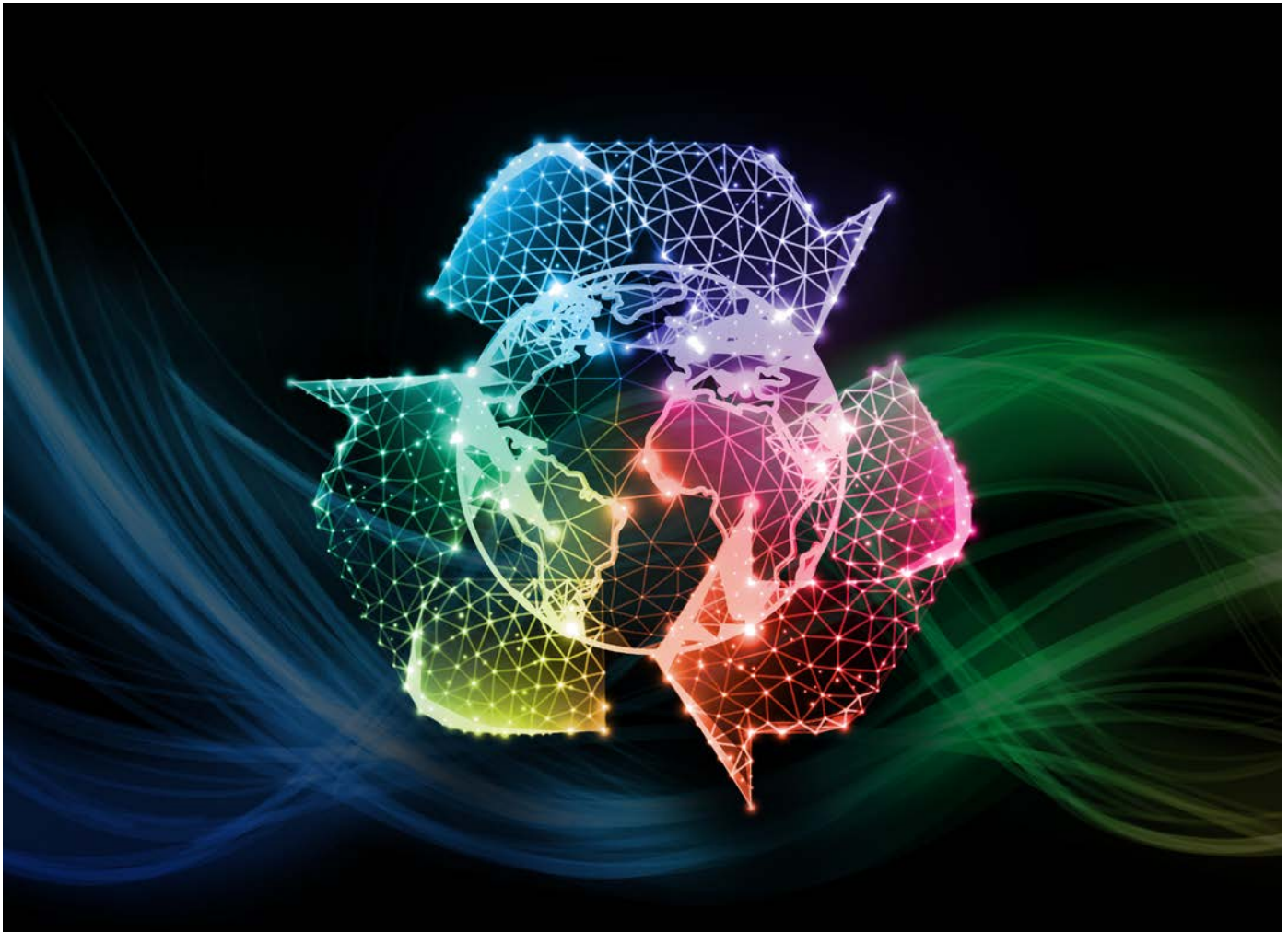
The VisiPORT port monitoring solution is an easy-to-deploy and easy-to-manage solution. It enables you to monitor the status and capacity of all copper and fiber ports in real time.

Sustainable design

The entire GigaSHIELD X10D platform is designed to help you reach your sustainability targets. A streamlined, modular design reduces the number of SKUs, lowering the environmental impacts to produce, distribute and support additional components. Because it uses eco-friendly packaging with little to no single-use plastic, it also reduces your waste stream.

As a Category 6A solution, the GigaSHIELD X10D platform takes advantage of extended bandwidth and power-carrying capabilities, providing a solution that can support multiple upgrades. Over the long term, this reduces the environmental impacts of mining, processing and distributing replacement components. Leveraging the insights and network intelligence of the imVision and VisiPORT solutions, the GigaSHIELD X10D platform also helps optimize resource use and minimize energy consumption.

-  Helps you reach sustainability goals
-  Lowers environmental impact
-  Reduces waste stream
-  Helps optimize resources
-  Minimizes energy requirements



Developed for you. Supported by CommScope.

Built on the legacy of the SYSTIMAX portfolio, the GigaSHIELD X10D platform is the only shielded Cat 6A solution fully backed and supported by SYSTIMAX Assurance™, an innovative and bold new customer service commitment that supports you across the entire network life cycle.

SYSTIMAX Assurance features the existing customer service programs offered under the SYSTIMAX brand—25-Year Extended Warranty, Applications Assurance, design support, technical training, etc.—plus online tools, 24/7 live tech support, project installation site surveys and more. Add in CommScope-provided design tools, calculators and WebTrak® performance verification and the result is blanket protection and unprecedented peace of mind.

Dependability at its core

The next level of customer service multi-channel, around-the-clock incident support



**25-YEAR
EXTENDED PRODUCT
WARRANTY**



**25-YEAR
APPLICATIONS
ASSURANCE**



**24/7 ONLINE
TECHNICAL
ASSISTANCE**



**ONLINE PRODUCT
PERFORMANCE TESTING
CERTIFICATES (WEBTRAK®)**



One platform for all your shielded Cat 6A applications

The GigaSHIELD X10D solution gives you one high-performance, end-to-end platform for most shielded Cat 6A configurations and applications. It also strengthens the reputation of the SYSTIMAX brand as a media-agnostic provider, able to support any type of enterprise network, end to end. Shielded and unshielded copper, multimode and singlemode fiber.

For more than 40 years, SYSTIMAX brand customers and partners have informed and inspired our endless innovation. We asked them what they needed in their Category 6A shielded solution. They told us: more of everything that matters most. We listened. The result is the GigaSHIELD X10D platform.

CommScope pushes the boundaries of communications technology with revolutionary ideas and ground-breaking discoveries that spark profound human achievement.

We collaborate with our customers and partners to design, create and build the world's most advanced networks. It is our passion and commitment to identify the next opportunity and realize a better tomorrow.

For more information, visit the SYSTIMAX 2.0 solutions page
www.systimax.com



SYSTIMAX[®]
COMMSCOPE

YOUR NETWORK

YOUR FUTURE

systimax.com

Visit our website or contact your local CommScope representative for more information.

© 2024 CommScope, LLC. All rights reserved. CommScope and the CommScope logo are registered trademarks of CommScope and/or its affiliates in the U.S. and other countries. For additional trademark information see <https://www.commscope.com/trademarks>. All product names, trademarks and registered trademarks are property of their respective owners.

BR-119369-EN (10/24)