

6P-6M-A0



6-port sector antenna, 6x 1695–2690 MHz, 65° HPBW, tilt adjustment by manual control module

General Specifications

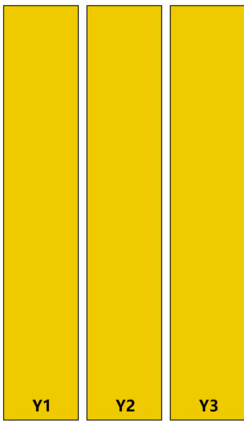
Antenna Type	Sector
Band	Single band
Color	Light Gray (RAL 7035)
Grounding Type	RF connector inner conductor and body grounded to reflector and mounting bracket
Performance Note	Outdoor usage
Radome Material	Fiberglass, UV resistant
Radiator Material	Aluminum
Reflector Material	Aluminum
RF Connector Interface	4.3-10 Female
RF Connector Location	Bottom
RF Connector Quantity, mid band	6
RF Connector Quantity, total	6

Dimensions

Width	377 mm 14.843 in
Depth	87 mm 3.425 in
Length	1397 mm 55 in
Net Weight, antenna only	14.6 kg 32.187 lb

Array Layout

6P-6M-A0



Array ID	Frequency (MHz)	RF Connector	HPBW	RET (N/A)	AISG No.	RET UID
Y1	1695-2690	1 - 2	65°	N/A	NA	N/A
Y2	1695-2690	3 - 4	65°			
Y3	1695-2690	5 - 6	65°			

(Sizes of colored boxes are not true depictions of array sizes)

Port Configuration



Electrical Specifications

Impedance	50 ohm
Operating Frequency Band	1695 – 2690 MHz
Polarization	±45°
Total Input Power, maximum	600 W

6P-6M-A0

Electrical Specifications

	Y1-Y3	Y1-Y3	Y1-Y3	Y1-Y3	Y1-Y3
Frequency Band, MHz	1695–1880	1850–1990	1920–2200	2300–2500	2500–2690
RF Port	1-6	1-6	1-6	1-6	1-6
Gain, dBi	17.1	17.5	17.9	18.3	18.2
Beamwidth, Horizontal, degrees	67	65	63	59	58
Beamwidth, Vertical, degrees	7.2	6.9	6.4	5.5	5.3
Beam Tilt, degrees	2–12	2–12	2–12	2–12	2–12
USLS (First Lobe), dB	19	21	19	18	20
Front-to-Back Ratio, Copolarization 180° ± 30°, dB	31	33	32	31	30
Isolation, Cross Polarization, dB	28	28	28	28	28
Isolation, Inter-band, dB	28	28	28	28	28
VSWR Return loss, dB	1.5 14.0	1.5 14.0	1.5 14.0	1.5 14.0	1.5 14.0
PIM, 3rd Order, 2 x 20 W, dBc	-150	-150	-150	-150	-150
Input Power per Port, maximum, watts	250	250	250	250	250

Mechanical Specifications

Wind Loading @ Velocity, frontal	524.0 N @ 150 km/h (117.8 lbf @ 150 km/h)
Wind Loading @ Velocity, lateral	58.0 N @ 150 km/h (13.0 lbf @ 150 km/h)
Wind Loading @ Velocity, rear	482.0 N @ 150 km/h (108.4 lbf @ 150 km/h)
Wind Speed, maximum	241 km/h (150 mph)

Packaging and Weights

Width, packed	472 mm 18.583 in
Depth, packed	207 mm 8.15 in
Length, packed	1627 mm 64.055 in
Weight, gross	23 kg 50.706 lb

Regulatory Compliance/Certifications

Agency	Classification
ISO 9001:2015	Designed, manufactured and/or distributed under this quality management system
UK-ROHS	Compliant

6P-6M-A0

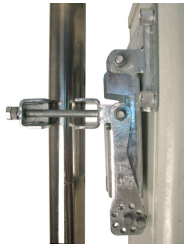
Included Products

- BSAMNT-B95-03 – Wide Profile Antenna Downtilt Mounting Kit for 2.4 - 4.5 in (60 - 115 mm) OD round members. Kit contains one scissor top bracket set and one bottom bracket set.

* Footnotes

Performance Note Severe environmental conditions may degrade optimum performance

BSAMNT-B95-03



Wide Profile Antenna Downtilt Mounting Kit for 2.4 - 4.5 in (60 - 115 mm) OD round members. Kit contains one scissor top bracket set and one bottom bracket set.

Product Classification

Product Type Downtilt mounting kit

General Specifications

Application Outdoor

Color Silver

Dimensions

Compatible Diameter, maximum 114.3 mm | 4.5 in

Compatible Diameter, minimum 61 mm | 2.402 in

Weight, net 4.5 kg | 9.921 lb

Material Specifications

Material Type Galvanized steel

Packaging and Weights

Included Brackets | Hardware

Packaging quantity 2

Regulatory Compliance/Certifications

Agency

CE
ISO 9001:2015

Classification

Compliant with the relevant CE product directives
Designed, manufactured and/or distributed under this quality management system

