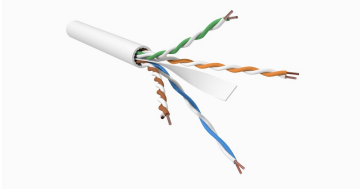


# 3081B

## Base Product



## GigaSPEED XL5™ 3081B ETL Verified Category 6 U/UTP Cable

### Product Classification

|                              |   |
|------------------------------|---|
| <b>Regional Availability</b> | Asia   Australia/New Zealand   EMEA   Latin America |
| <b>Portfolio</b>             | SYSTIMAX®   |
| <b>Product Type</b>          | Twisted pair cable                                  |
| <b>Product Brand</b>         | GigaSPEED XL®                                       |

### General Specifications

|                                |   |
|--------------------------------|---|
| <b>Product Number</b>          | 3081B   |
| <b>ANSI/TIA Category</b>       | 6   |
| <b>Cable Component Type</b>    | Horizontal  |
| <b>Cable Type</b>              | U/UTP (unshielded)  |
| <b>Conductor Type, singles</b> | Solid   |
| <b>Conductors, quantity</b>    | 8   |
| <b>Pairs, quantity</b>         | 4   |
| <b>Separator Type</b>          | Bisector  |
| <b>Supported Application</b>   | Fully Supports 2.5/5GBASE-T applications in a 4 connector channel @ 100 meters              |
| <b>Transmission Standards</b>  | 10/100/1000/2.5G/5GBASE-T   ANSI/TIA-568.2-D   CENELEC EN 50288-6-1   ISO/IEC 11801 Class E |

### Dimensions

|  |                     |
|--|---------------------|
| <b>Diameter Over Insulated Conductor</b> | 1.041 mm   0.041 in |
| <b>Diameter Over Jacket, nominal</b>     | 5.969 mm   0.235 in |
| <b>Jacket Thickness</b>                  | 0.508 mm   0.02 in  |
| <b>Conductor Gauge, singles</b>          | 23 AWG              |

### Electrical Specifications

|   |                                    |
|---|------------------------------------|
| <b>dc Resistance Unbalance, maximum</b> | 5 %                                |
| <b>dc Resistance, maximum</b>           | 7.61 ohms/100 m   2.32 ohms/100 ft |

# 3081B

|  |   |
|--|---|
| <b>Mutual Capacitance at Frequency</b>       | 5.6 nF/100 m @ 1 kHz  |
| <b>Nominal Velocity of Propagation (NVP)</b> | 70 %  |
| <b>Operating Frequency, maximum</b>          | 300 MHz   |
| <b>Operating Voltage, maximum</b>            | 80 V  |
| <b>Remote Powering</b>                       | Fully complies with the recommendations set forth by IEEE 802.3bt (Type 4) for the safe delivery of power over LAN cable when installed according to ISO/IEC 14763-2, CENELEC EN 50174-1, CENELEC EN 50174-2 or TIA TSB-184-A |
| <b>Segregation Class</b>                     | c   |

## Representative Image



## Material Specifications

|                            |                               |
|----------------------------|-------------------------------|
| <b>Conductor Material</b>  | Bare copper                   |
| <b>Insulation Material</b> | Polyolefin                    |
| <b>Jacket Material</b>     | Low Smoke Zero Halogen (LSZH) |
| <b>Separator Material</b>  | Polyolefin                    |

## Mechanical Specifications

|                                 |                  |
|---------------------------------|------------------|
| <b>Pulling Tension, maximum</b> | 11.34 kg   25 lb |
|---------------------------------|------------------|

## Environmental Specifications

|                                 |                                     |
|---------------------------------|-------------------------------------|
| <b>Installation temperature</b> | 0 °C to +60 °C (+32 °F to +140 °F)  |
| <b>Operating Temperature</b>    | -20 °C to +60 °C (-4 °F to +140 °F) |

# 3081B

---

|                             |                               |
|-----------------------------|-------------------------------|
| <b>Acid Gas Test Method</b> | IEC 60754-2                   |
| <b>Environmental Space</b>  | Low Smoke Zero Halogen (LSZH) |
| <b>Flame Test Method</b>    | IEC 60332-3-22                |
| <b>Smoke Test Method</b>    | IEC 61034-2                   |

## Packaging and Weights

|                     |                          |
|---------------------|--------------------------|
| <b>Cable weight</b> | 37.204 kg/km   25 lb/kft |
|---------------------|--------------------------|