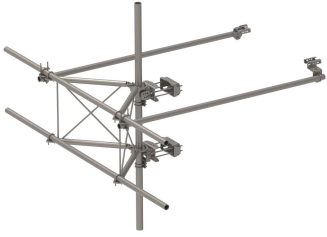


# SFG23RHDX-13-B



G23RHDX Tower Sector Frame with spine extension for RRU Mounting, 13 ft x 2.88 in OD face pipes. Base Kit Only. No antenna pipes.

- Extended spine for SFG23 RHDX mounts that decrease PIM from radio relocation
- Increased versatility and stability
- Updated frame provides higher loading
- More RRU mounting available, reducing need for additional mounts
- Better load management
- Less structure stress
- Can be used in combination with APEX RRU mounts

## Product Classification

<b>Product Type</b>	High capacity Tower sector frame
<b>Product Brand</b>	PIM-guard
<b>Product Series</b>	G2

## General Specifications

<b>Mounting</b>	Angle 60°, 203.2 mm (8 in)   Straight or tapered legs up to 203.2 mm (8 in) OD
<b>Patent Number</b>	Patent pending
<b>Pipe, quantity</b>	0
<b>Sectors, quantity</b>	1
<b>Tower Taper</b>	Non-tapered   Tapered

## Dimensions

<b>Face Width</b>	3,962 mm   13 ft
<b>Width</b>	3,962.4 mm   156 in
<b>Face Support Pipe Diameter</b>	73.025 mm   2.875 in
<b>Mounting Diameter, maximum</b>	218.44 mm   8.6 in
<b>Mounting Diameter, minimum</b>	38.1 mm   1.5 in
<b>Pipe Outer Diameter</b>	73.025 mm   2.875 in
<b>Stand-off Distance</b>	1,066.8 mm   42 in

## Material Specifications

# SFG23RHDX-13-B

---

**Material Type** Hot dip galvanized steel

## Mechanical Specifications

**Wind Rating** For Specifications, please contact [steelproducts@commscope.com](mailto:steelproducts@commscope.com) or call 800-255-1479

## Packaging and Weights

**Included** Frame | Stiff arms (2) | Tower attachment

**Packaging quantity** 1

**Weight, net** 298.146 kg | 657.3 lb

## Regulatory Compliance/Certifications

Agency	Classification
CHINA-ROHS	Above maximum concentration value
ROHS	Compliant/Exempted
UK-ROHS	Compliant/Exempted



## \* Footnotes

**Wind Rating** BWS—Base Wind Speed; FBC—Florida Building Code