

4

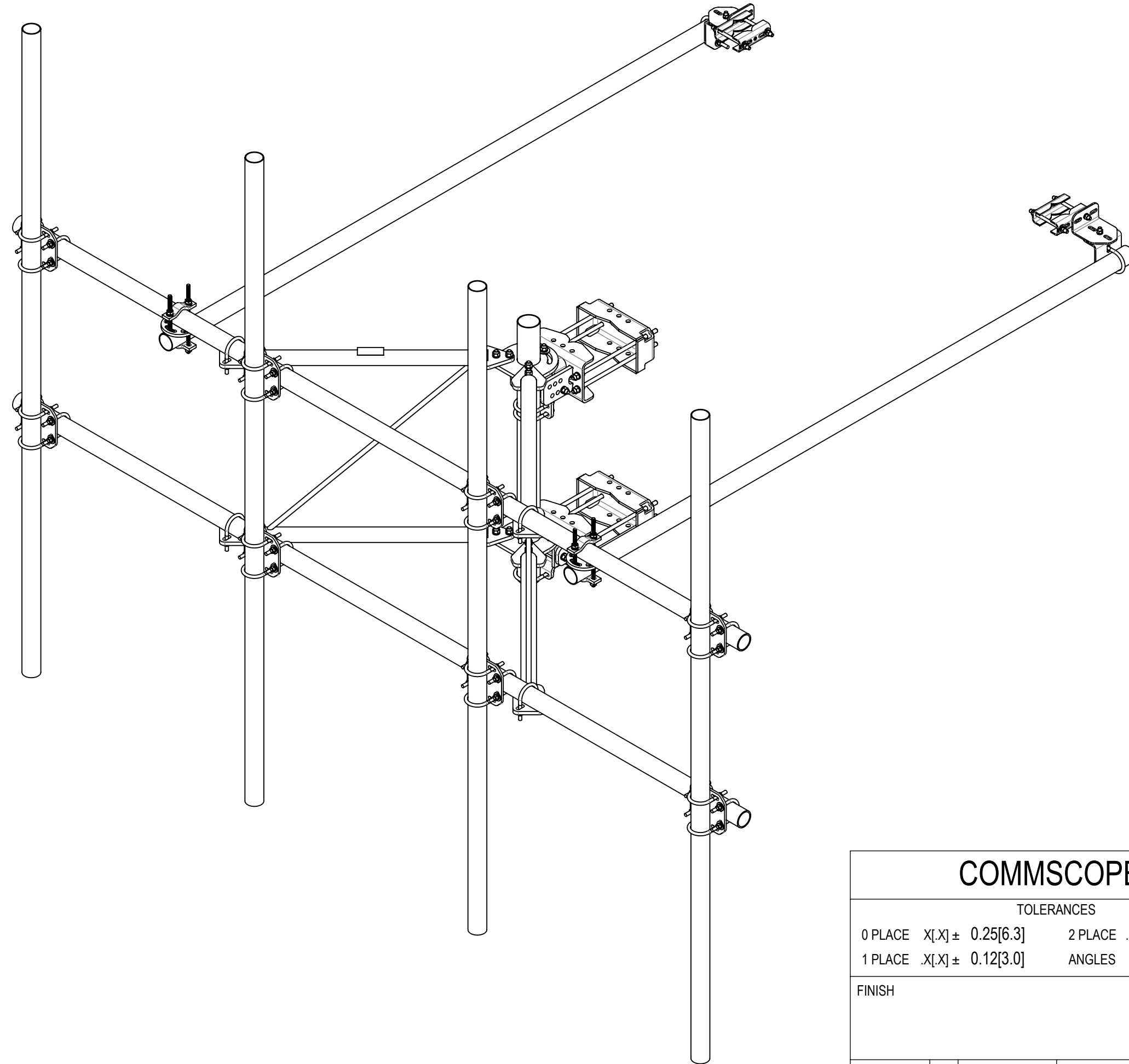
3


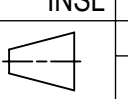
2

1

- 1.0 GENERAL NOTES
 - 1.1 ALL METRIC DIMENSIONS ARE IN BRACKETS [X.XX]
 - 1.2 FOR PATENT INFO: <https://www.cs-pat.com>
- 2.0 DESIGN NOTES
 - 2.1 ANY HAZARDS OR OBSTRUCTIONS TO THE CLIMBING FACILITY AND SAFETY CLIMB MUST BE IDENTIFIED PRIOR TO INSTALLING THE APPURTENANCE. ADDITIONAL PRODUCTS MAY BE REQUIRED TO MAINTAIN THE INTEGRITY OF THE SAFETY CLIMB. DURING INSTALLATION, TEMPORARY AND/OR PERMANENT PRECAUTIONARY MEASURES SHOULD BE TAKEN TO PRESERVE THE CLIMBING FACILITY AND/OR SAFETY CLIMB.
 - 2.2 UP TO 5.0° TAPER AVAILABLE ON MODELS THAT SUPPORT ADJUSTMENT.
 - 2.3 FACE WIDTH MUST BE GREATER THAN OR EQUAL TO 23.5" TO MEET THE APEX DISTANCE OF ANTENNA TO ANTENNA >24"
- 3.0 MANUFACTURING/SPECIAL REQUIREMENTS
 - 3.1 TIGHTEN ALL BOLTS SECURING FLAT PLATES BY THE TURN-OF-NUT METHOD. TIGHTEN ALL U-BOLTS USING TURN-OF-NUT METHOD WITH ATTENTION TO LEAVE EQUAL DISTANCE AND EQUAL FORCE ON EACH LEG OF THE U-BOLT.
- 4.0 TEST
- 5.0 PACKAGING
 - 5.1 PACKAGING SHALL MEET COMMSCOPE REQUIREMENTS PER DOCUMENT IS-PL-3005.
 - 5.2 PRINTED DOCUMENT TO BE PLACED INSIDE POLYBAG AND THEN IN SHIPPING CONTAINER.
 - 5.3 EXTRA HARDWARE MAY BE SUPPLIED, BAGGED AND SHIPPED.

REVISIONS			
REV.	DESCRIPTION	DATE	APPROVED
A	INITIAL RELEASE	JL1183 05FEB24	CB1094 40188553CMO
B	SADDLE MOUNT CHANGED TO G23	YMENG 13JUN24	BA1025 40197994CMO



COMMSCOPE, INC. OF NORTH CAROLINA										
TOLERANCES					SAP MATERIAL MASTER					
0 PLACE .X[X] ± 0.25[6.3]		2 PLACE .XX[X] ± 0.06[1.5]			SFG22HDX-13-4-H10					
1 PLACE .X[X] ± 0.12[3.0]		ANGLES ± 2°								
FINISH					MATERIAL					
UNLESS OTHERWISE SPECIFIED DIMENSIONS ARE IN INCHES INTERPRET PER ANSI Y 14.5M-1994	NAME		DATE		SF, 13',(4)2.88"X120"-PIPES-PIM-SPACED					
	CE	JL1183	05FEB24							
	RW	RY1002	06/27/2024							
	AD	YMENG	06/27/2024							
	RE	YMENG	06/28/2024							
ECN 40197994CMO					SCALE		DOCUMENT NO.			
					1:16		SFG22HDX-13-4-H10			
SIZE		Auth Group		INSL		MODEL			DRAWING	
C						VERSION			STATUS	
00		RE		A			01		RE B	
SHEET										
1 OF 6										

DENSITY		lbs/in³
MASS	705.43	lbs
VOLUME	2490.88	in³
SURFACE AREA	27883.81	in²
HEIGHT	120"	
LENGTH	156"	
WIDTH	120"	

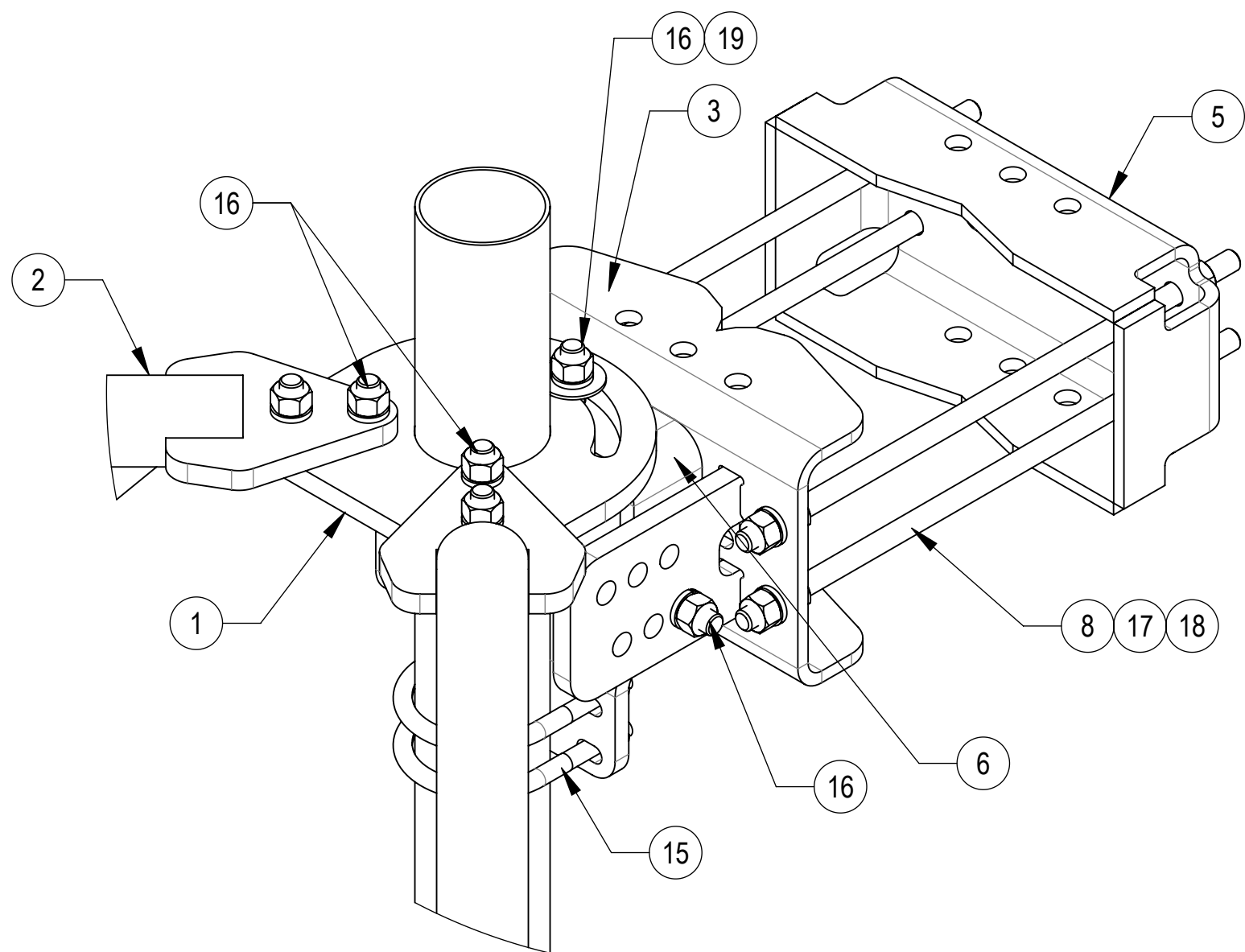
© 2024 CommScope, Inc. Confidential

4

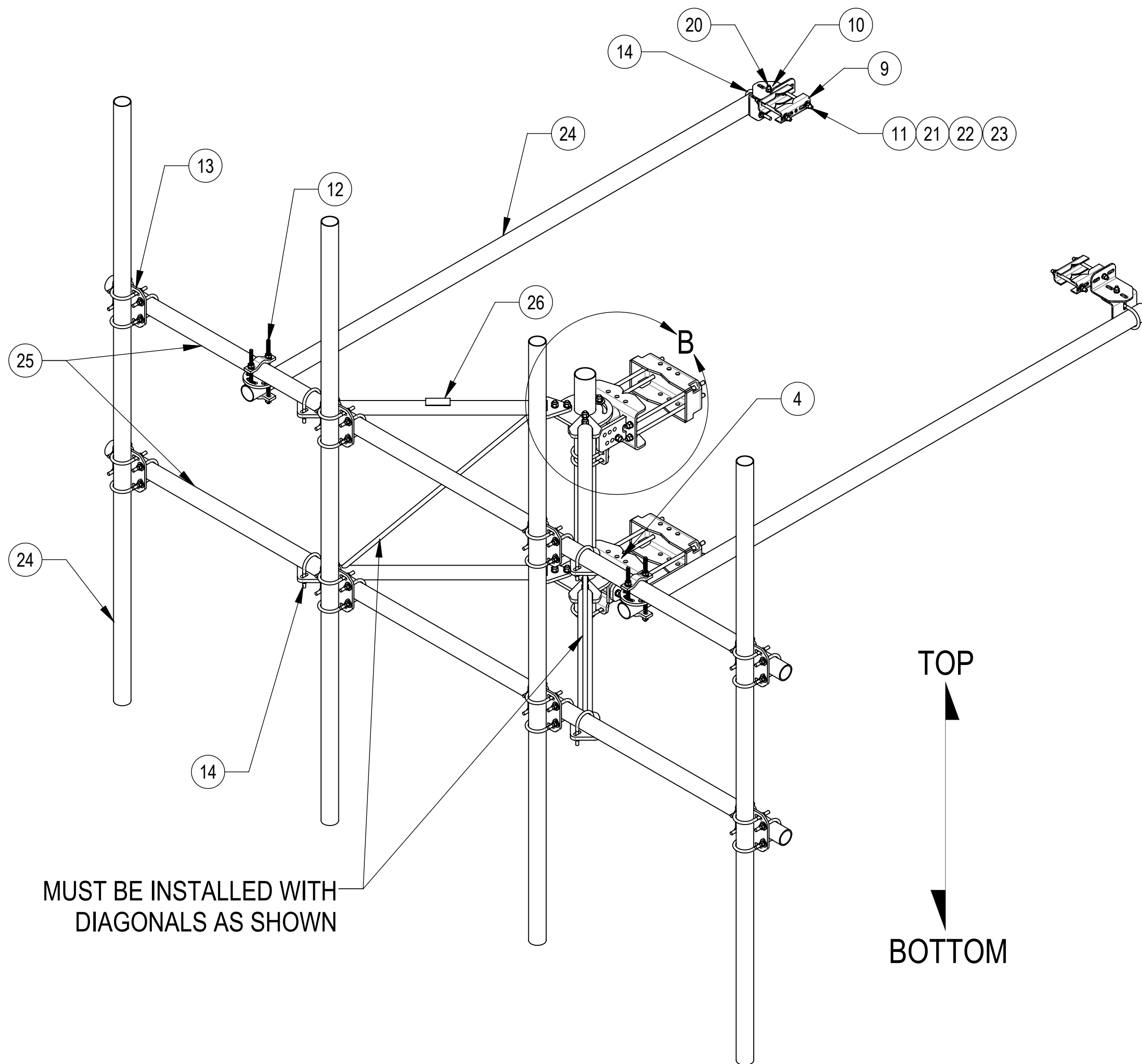
3

2

1



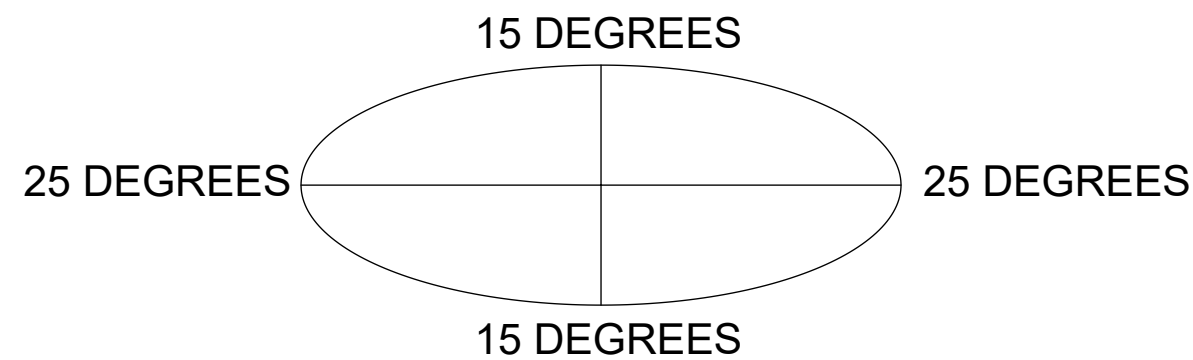
DETAIL B
SCALE 1 : 4



MUST BE INSTALLED WITH
DIAGONALS AS SHOWN

ALLOWABLE TIEBACK ANGLE

± 15 DEGREES VERTICAL
± 25 DEGREES HORIZONTAL



COMPONENT PART NUMBERS PROVIDED FOR ASSEMBLY PURPOSES;
INDIVIDUAL COMPONENTS MAY BE SHIPPED AS PARTS WITHIN AN INCLUDED KIT.

ITEM	PART NO.	DESCRIPTION	QTY.	WEIGHT	NOTE NO.
1	SFG2270	BACK VERTICAL ARM MOUNT	1	36.96 LBS	
2	SFG2278	ARM, STANDOFF - SFG22	2	40.92 LBS	
3	SFG2380	WELDMENT, HD, TOP TAPER BRACKET	1	22.78 LBS	
4	SFG2381	WELDMENT, HD, LOWER TOWER LEG BRACKET	1	17.42 LBS	
5	SFG2289	G2 RRU BACK CLAMP, HD	2	18.65 LBS	
6	SFG2386	WELDMENT, SFG2 AZIMUTH BRACKET	1	10.07 LBS	
7	SFG2397-00	WELDMENT, G23 AZIMUTH BRACKET	1	7.94 LBS	
8	MT-382-18	5/8" X 18" THREADED ROD	8	1.43 LBS	
9	SAB01	FORMED CLAMP	4	1.35 LBS	
10	XAU01	ANGLE, CROSSOVER, 1.9-3.5" X 1.9-3.5" OD	4	2.98 LBS	
11	MT-379-8	1/2" X 8" GALV THREADED ROD	4	0.45 LBS	
12	XP-R	CROSSOVER PLATE, ROUND, UP TO 3.5" OD	2	6.20 LBS	
13	XP-2525	CROSSOVER PLATE KIT, 2-7/8 OD X 2-7/8 OD	8	8.37 LBS	
14	GUB-4352	1/2" X 3" X 5-1/4" GALV U-BOLT	6	0.71 LBS	
15	GUB-4355	1/2" X 3-5/8" X 5" GALV U-BOLT	3	0.71 LBS	
16	GB-05225	5/8" X 2-1/4" GALV BOLT KIT	14	0.28 LBS	
17	GN-05	5/8" GALV HEX NUT	24	0.08 LBS	
18	GWL-05	5/8" GALV LOCK WASHER	16	0.03 LBS	
19	GWF-05	5/8" GALV FLAT WASHER, 1.7OD	2	0.06 LBS	
20	GB-04145	1/2" X 1-1/2" GALV BOLT KIT	2	0.13 LBS	
21	GN-04	1/2" GALV HEX NUT	10	0.04 LBS	
22	GWL-04	1/2" GALV LOCK WASHER	10	0.01 LBS	
23	GWF-04	1/2" GALV FLAT WASHER	8	0.04 LBS	
24	MT546120120	PIPE, 2.875"OD X 120"	6	35.44 LBS	
25	MT546156	2.875" O.D. X 156" PIPE	2	75.58 LBS	
26	SFG2255	LABEL, SFG22HDX	1	0.04 LBS	

COMMSCOPE, INC. OF NORTH CAROLINA				
TITLE SF, 13',(4)2.88"X120"-PIPES-PIM-SPACED				
SIZE C	SCALE 1:16	DOCUMENT NO. SFG22HDX-13-4-H10		
DRAWING		REVISION		SHEET
VERSION 01	STATUS RE	REVISION B	2 OF 6	

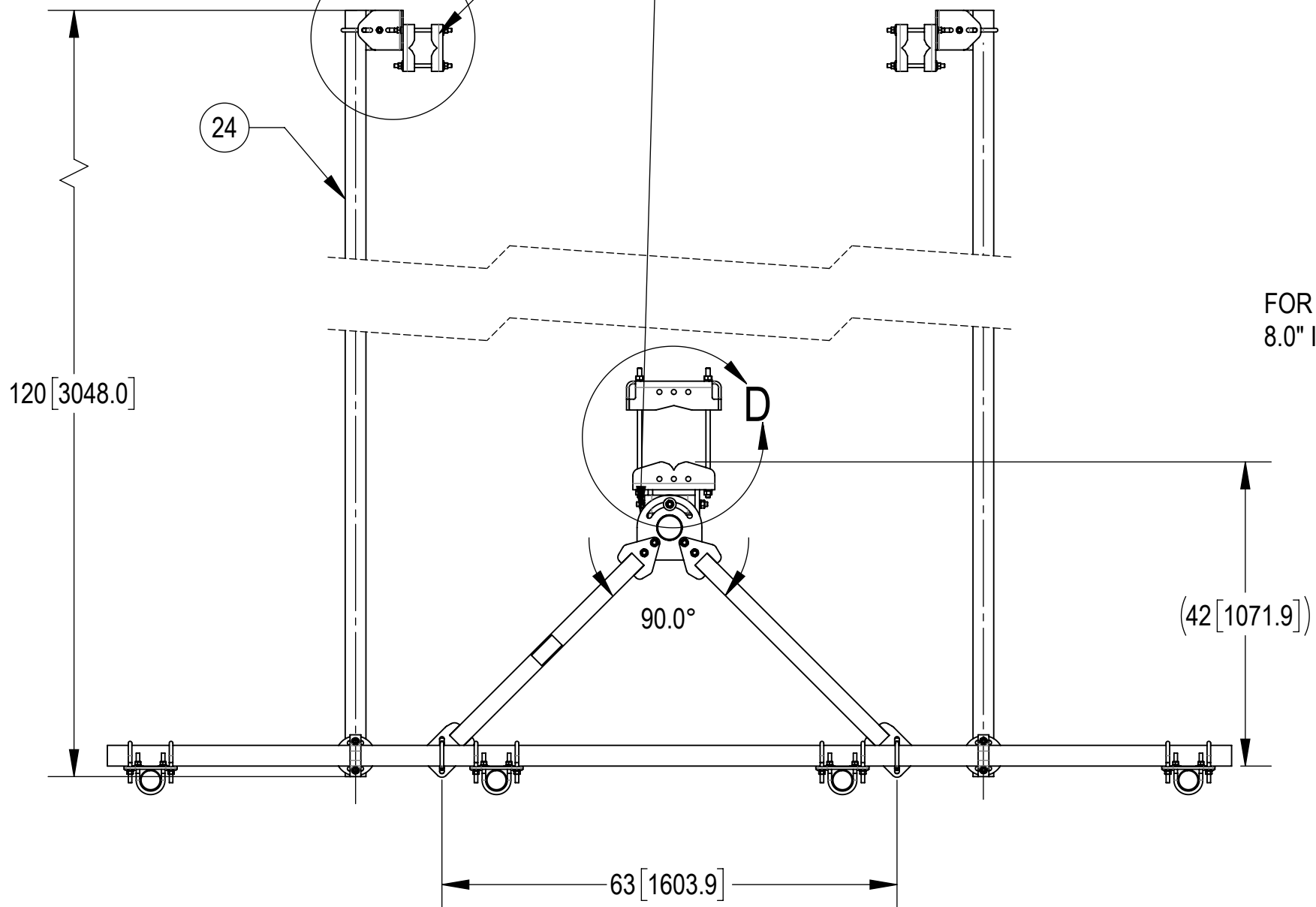
4

3

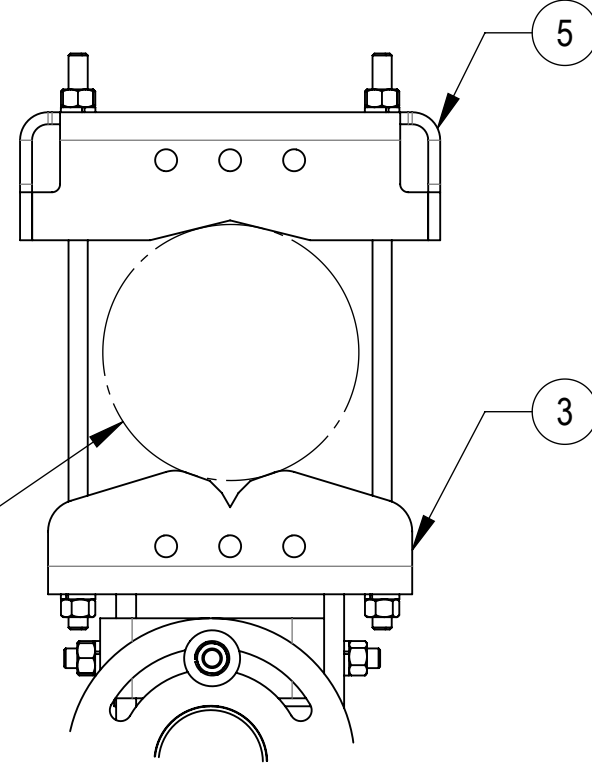
2

1

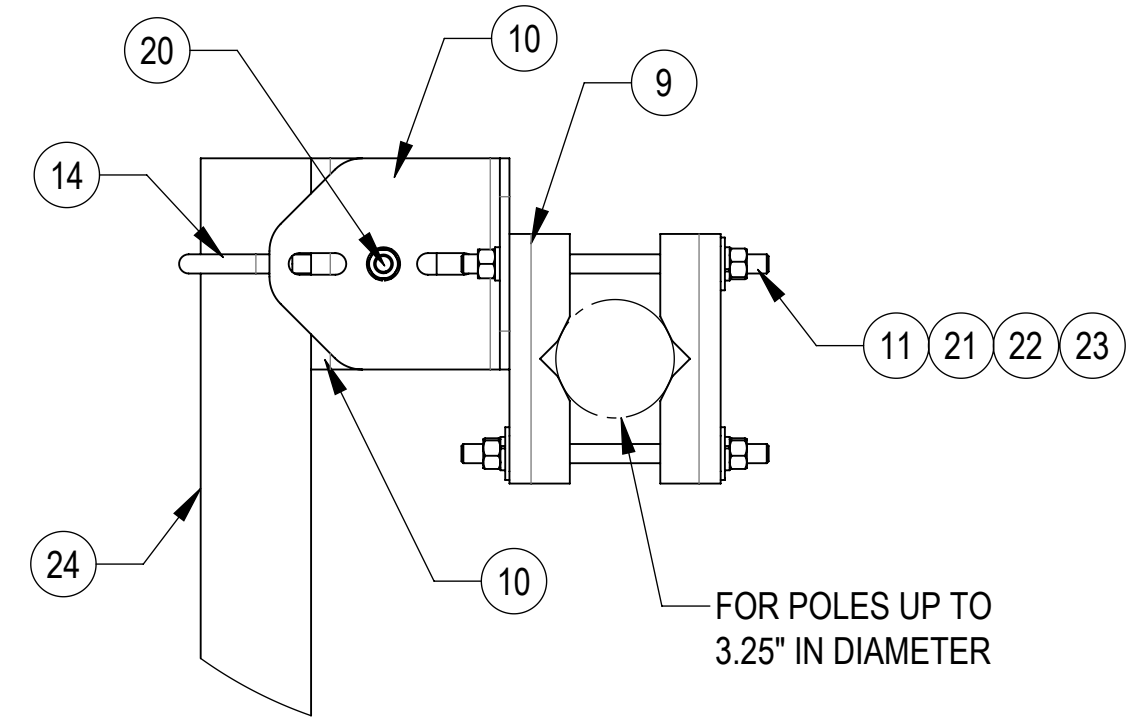
TIEBACK MUST BE CONNECTED TO A RIGID MEMBER THAT PROVIDES ADEQUATE SUPPORT WITHIN THE LIMITS NOTED IN THE TIEBACK ANGLE RANGE DETAIL. UNLESS APPROVED BY ENGINEER OF RECORD. SPINE STEM OF NEIGHBORING MOUNT IS ACCEPTABLE.



FOR POLES UP TO 8.0" IN DIAMETER



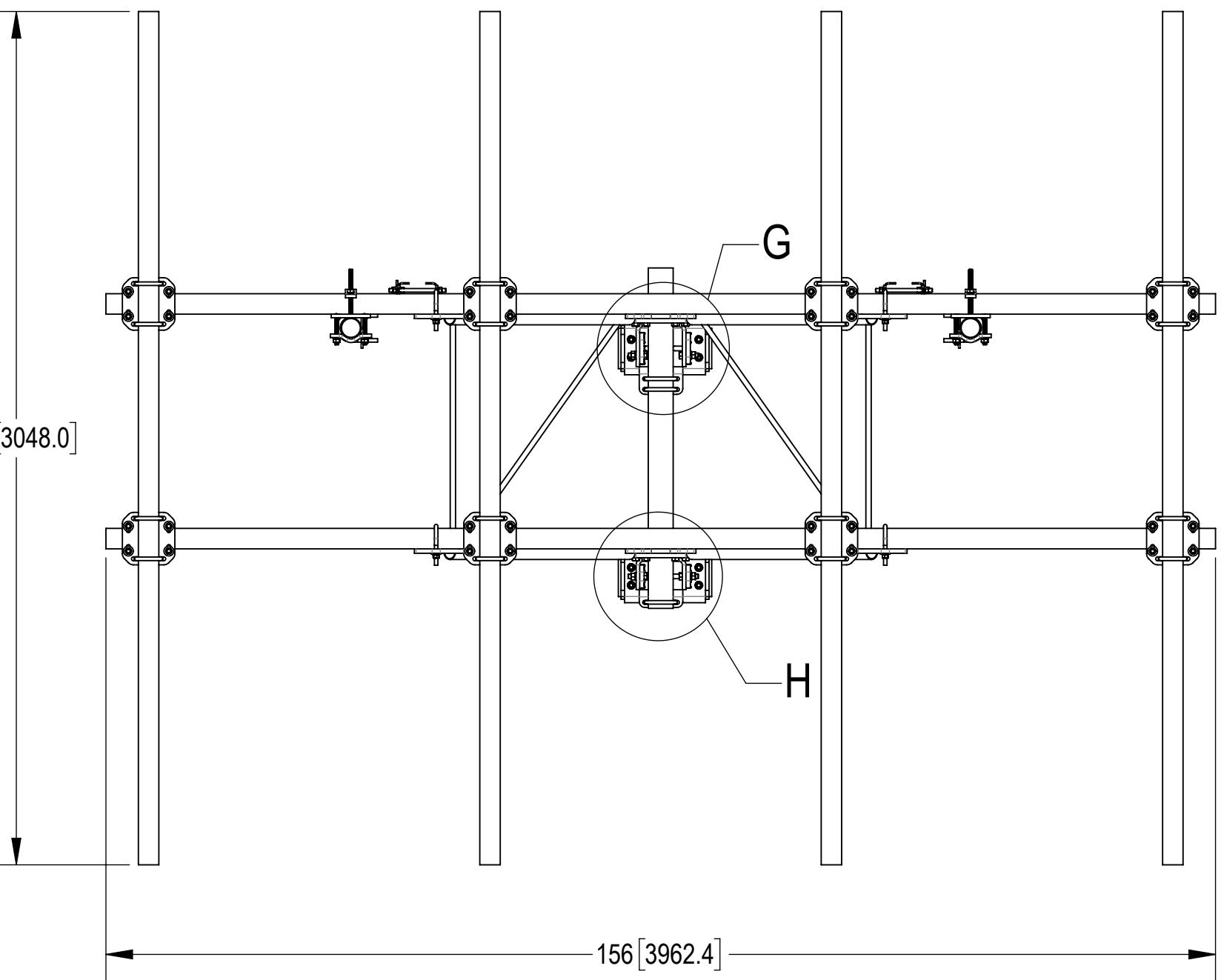
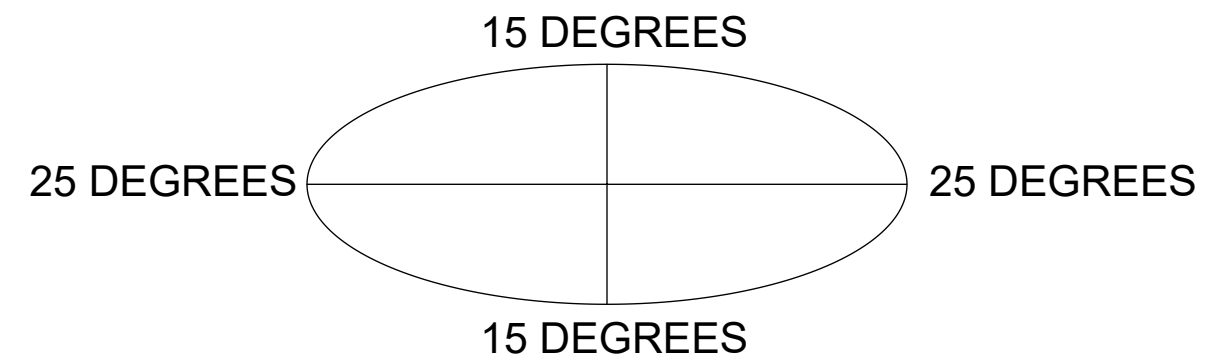
DETAIL D
SCALE 1:6



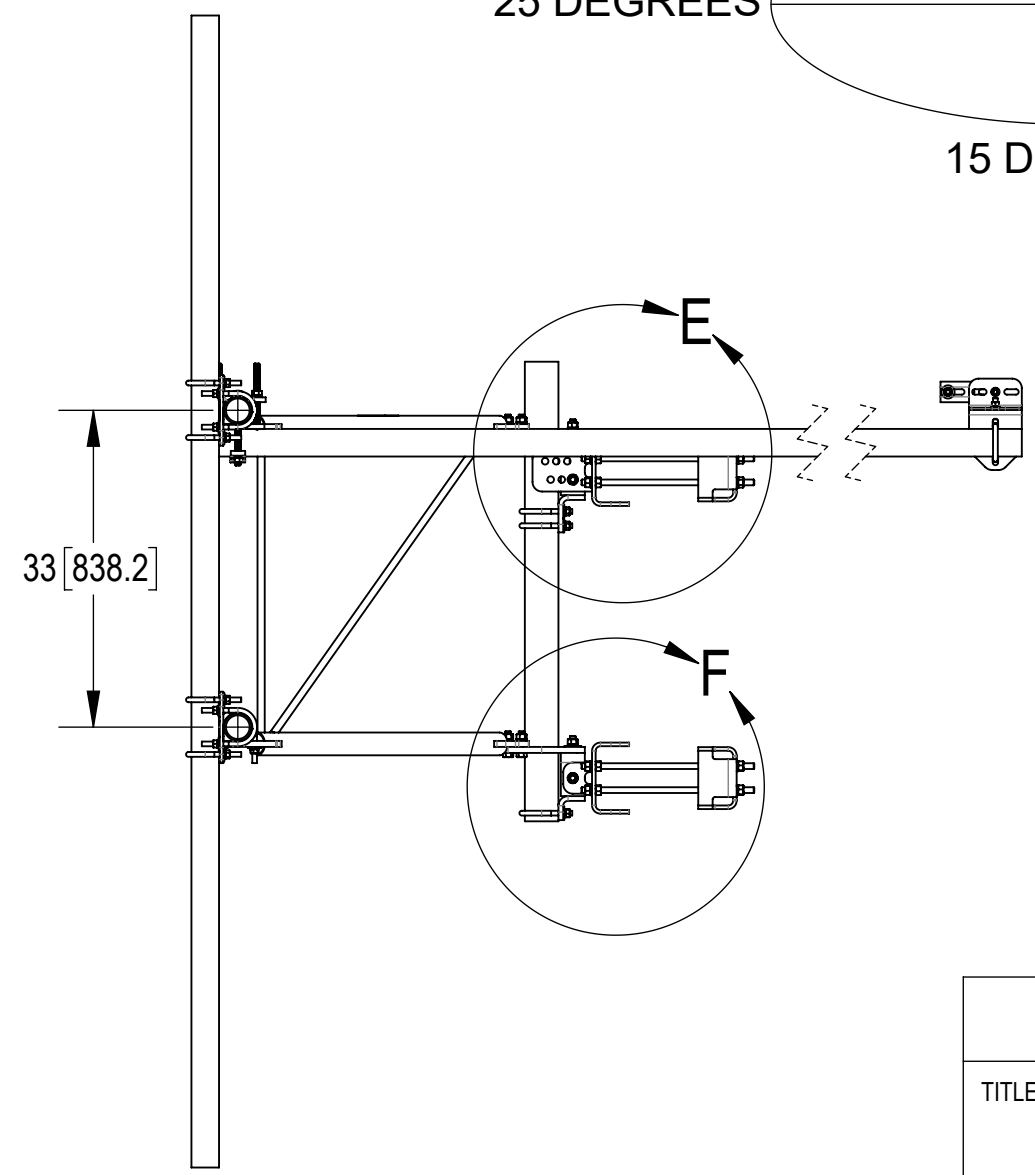
DETAIL C
SCALE 1:5

FOR POLES UP TO 3.25" IN DIAMETER

ALLOWABLE TIEBACK ANGLE
± 15 DEGREES VERTICAL
± 25 DEGREES HORIZONTAL



TOP
BOTTOM



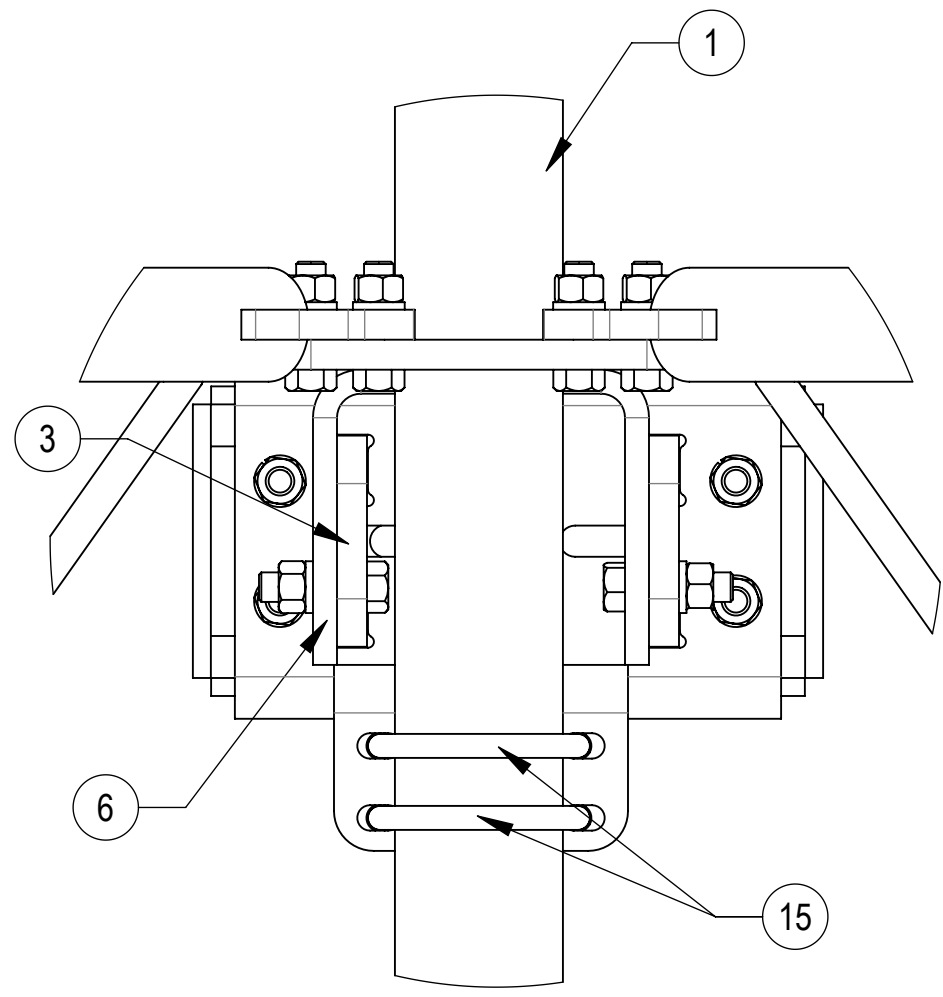
COMMSCOPE, INC. OF NORTH CAROLINA				
TITLE SF, 13', (4) 2.88" X 120" - PIPES - PIM - SPACED				
SIZE C	SCALE 1:22	DOCUMENT NO. SFG22HDX-13-4-H10		
		DRAWING		SHEET
		VERSION	STATUS	REVISION
		01	RE	B
				3 OF 6

4

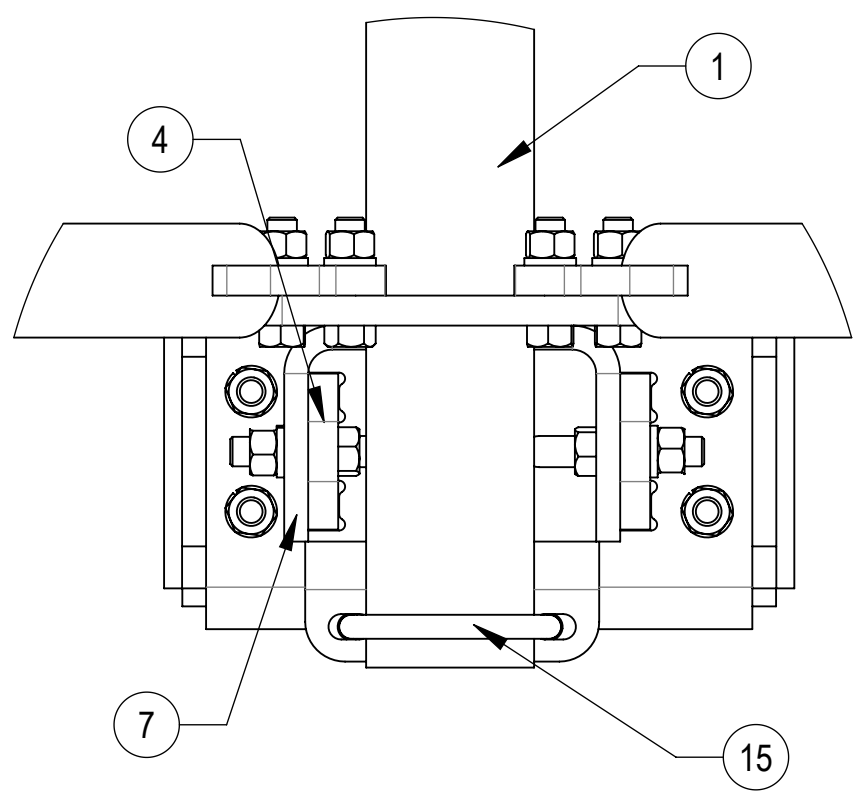
3

2

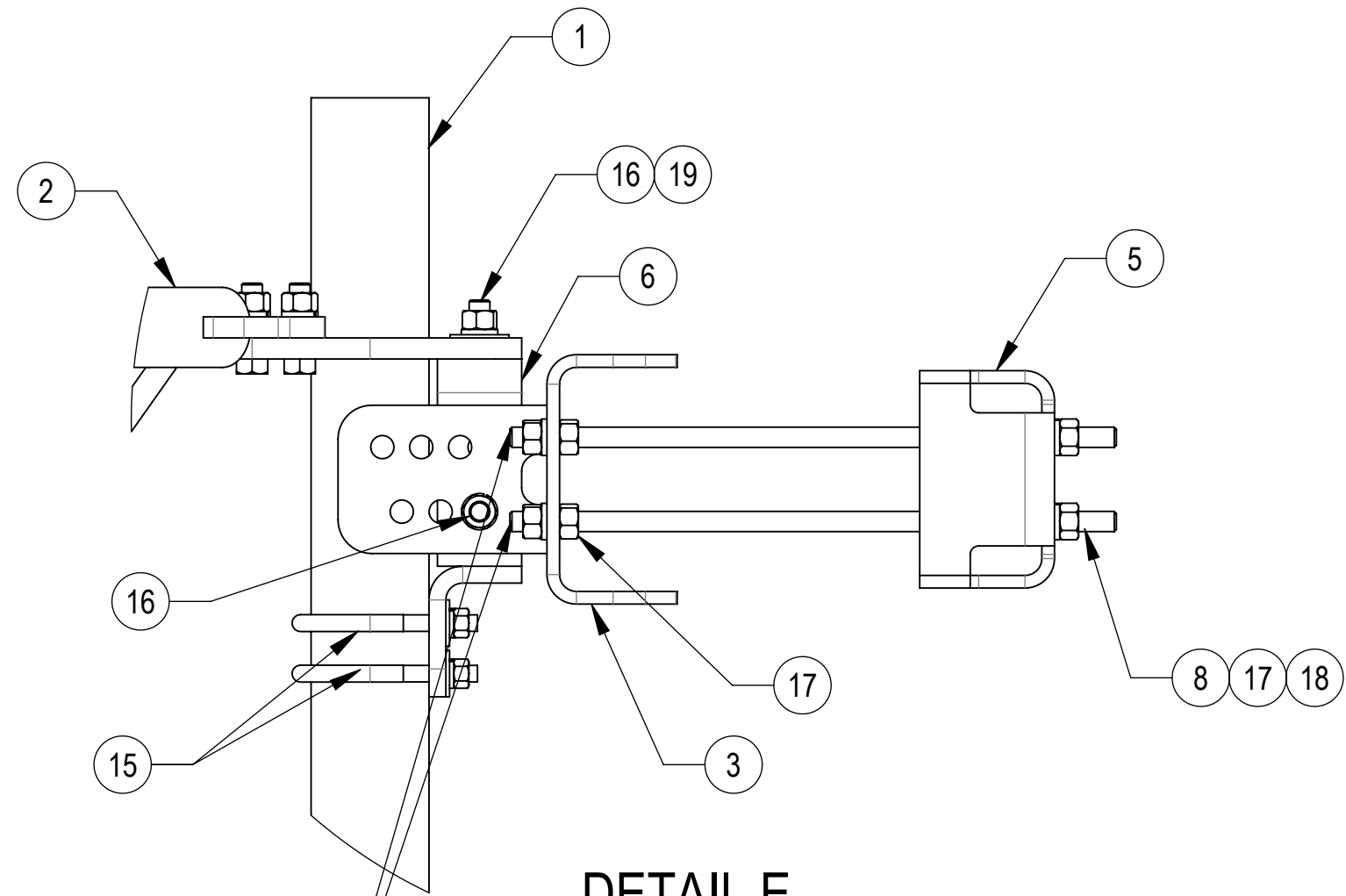
1



DETAIL G
SCALE 1 : 4

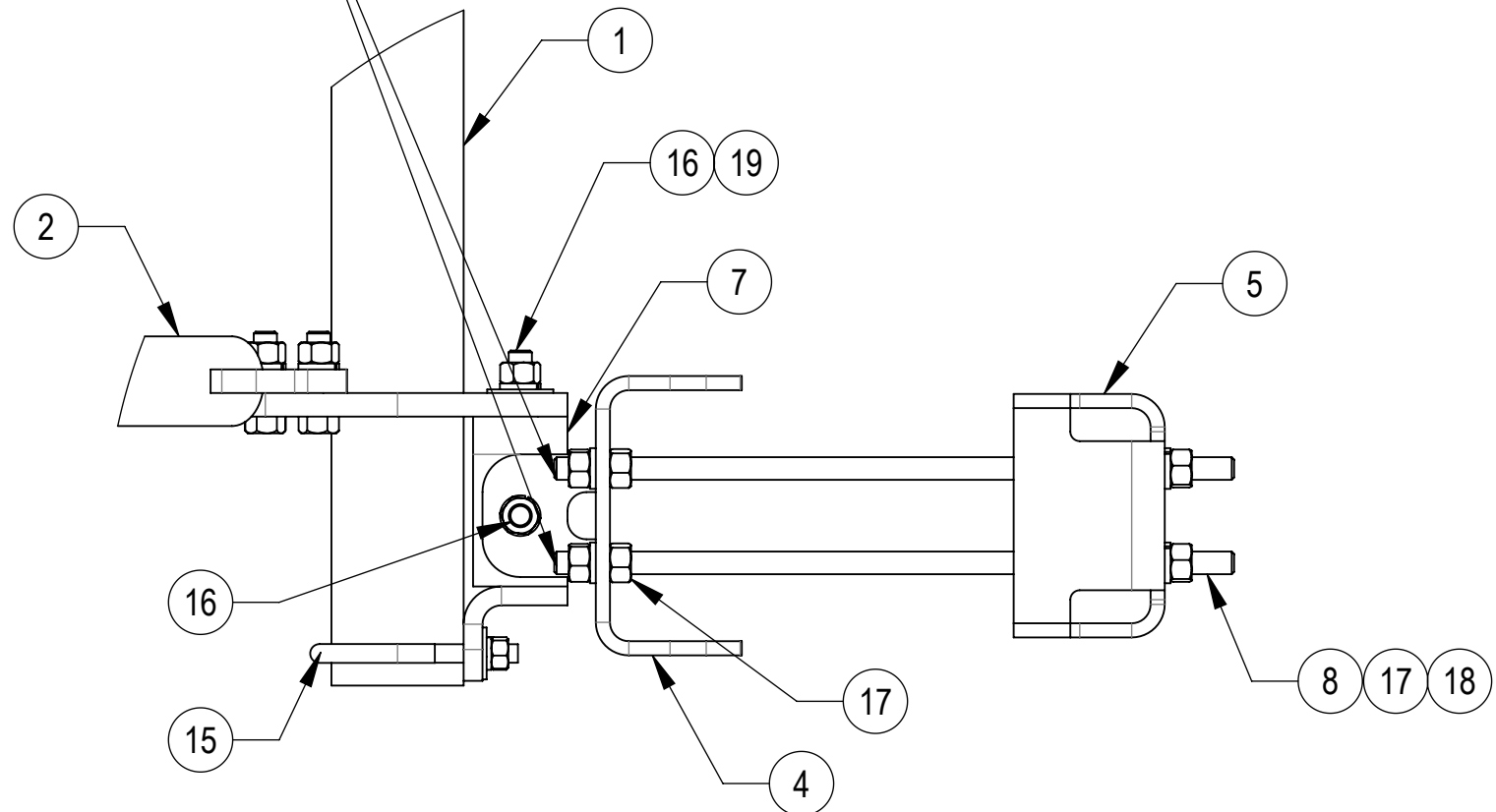


DETAIL H
SCALE 1 : 4


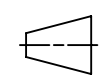


DETAIL E
SCALE 1 : 5

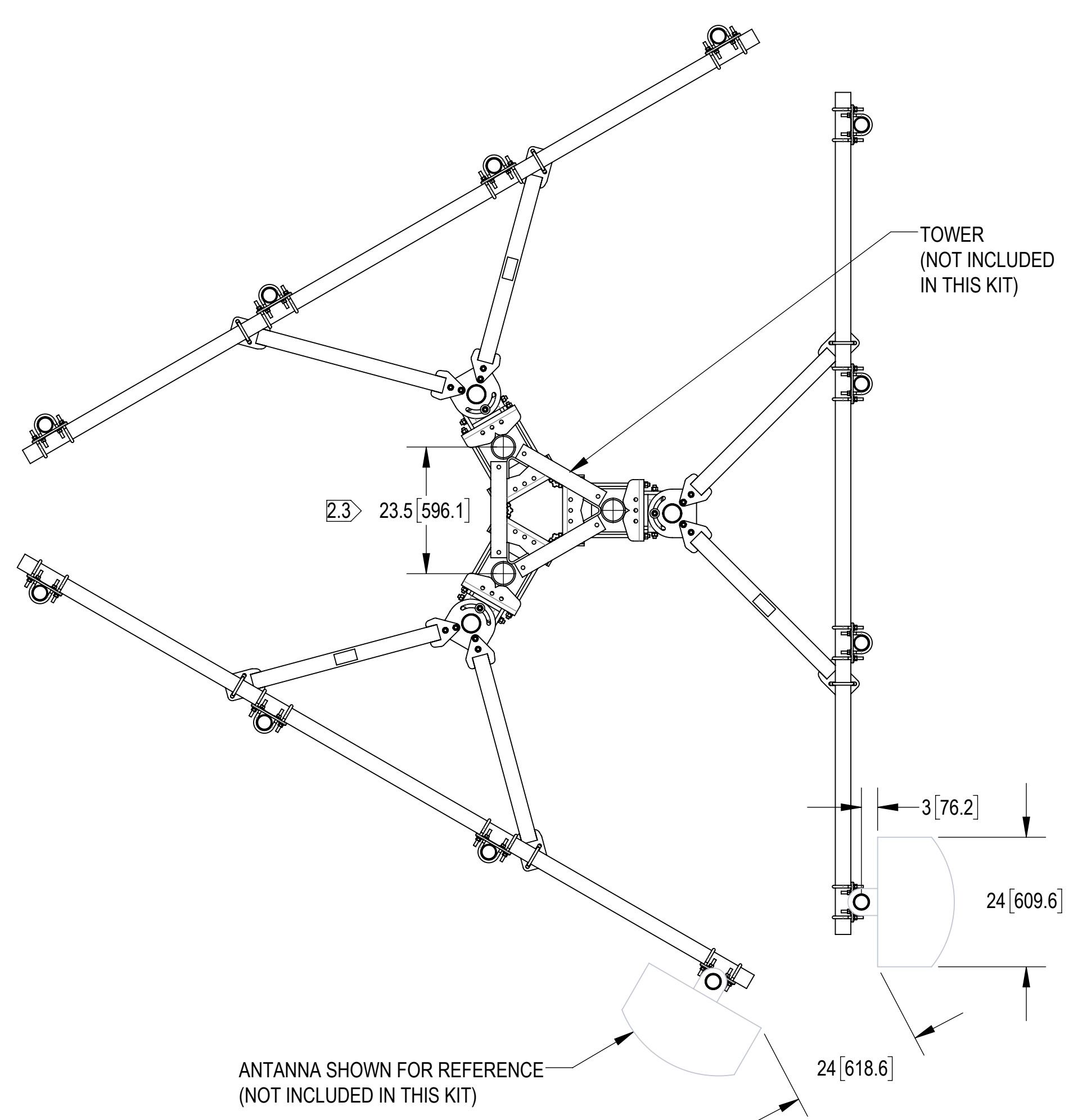
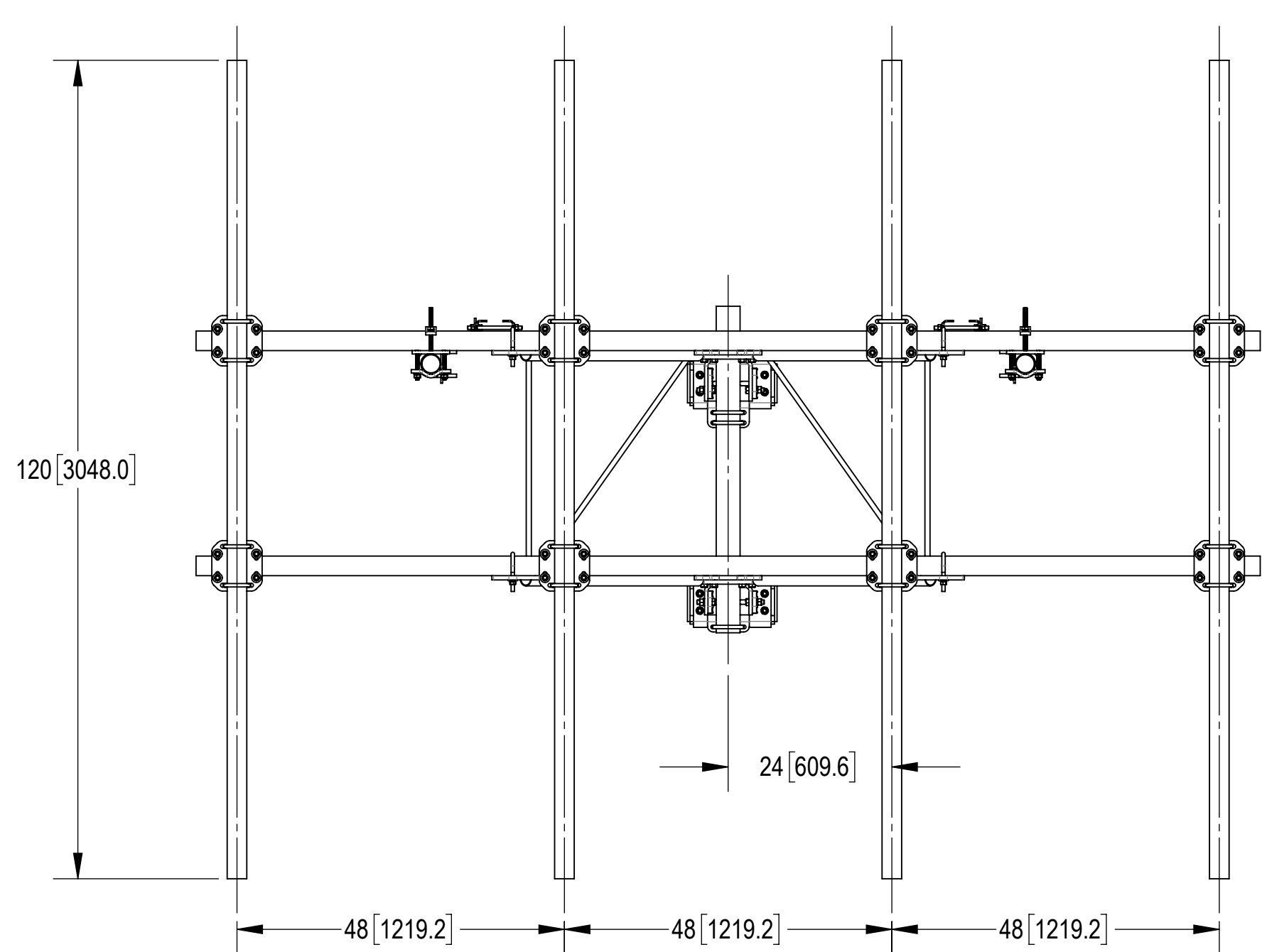
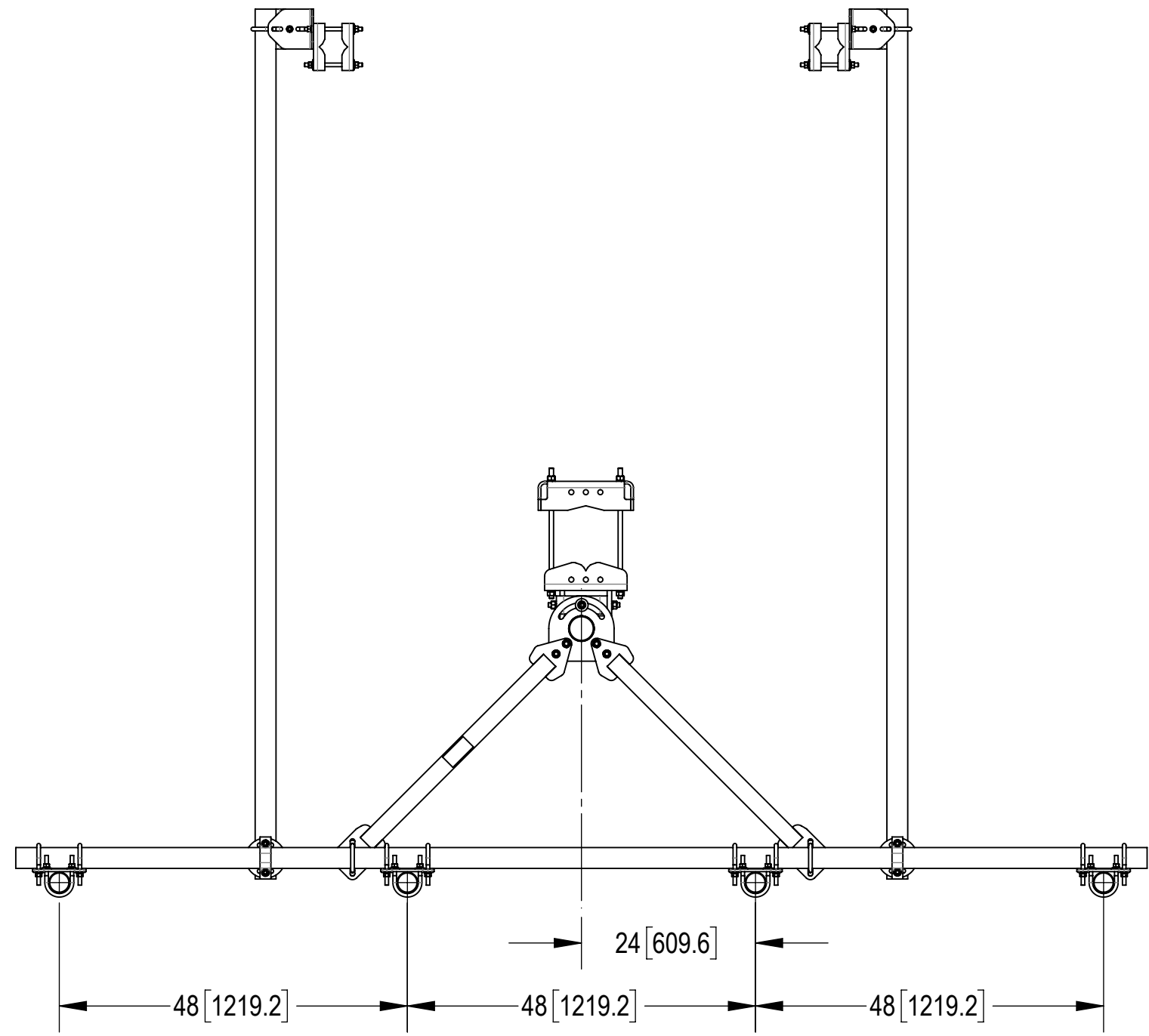
THE THREADED ROD CAN ONLY EXPOSE 4 TO 7 THREADS ON ONE SIDE OF THE BRACKET, WHICH IS TO PREVENT INTERFERENCE WITH THE SIDE BOLTS



DETAIL F
SCALE 1 : 5

COMMSCOPE, INC. OF NORTH CAROLINA				
TITLE SF, 13', (4) 2.88" X 120" - PIPES - PIM-SPACED				
SIZE C	SCALE 1:20	DOCUMENT NO. SFG22HDX-13-4-H10		
 		DRAWING		SHEET 4 OF 6
		VERSION 01	STATUS RE	

ANTENNA SPACING SHOWN

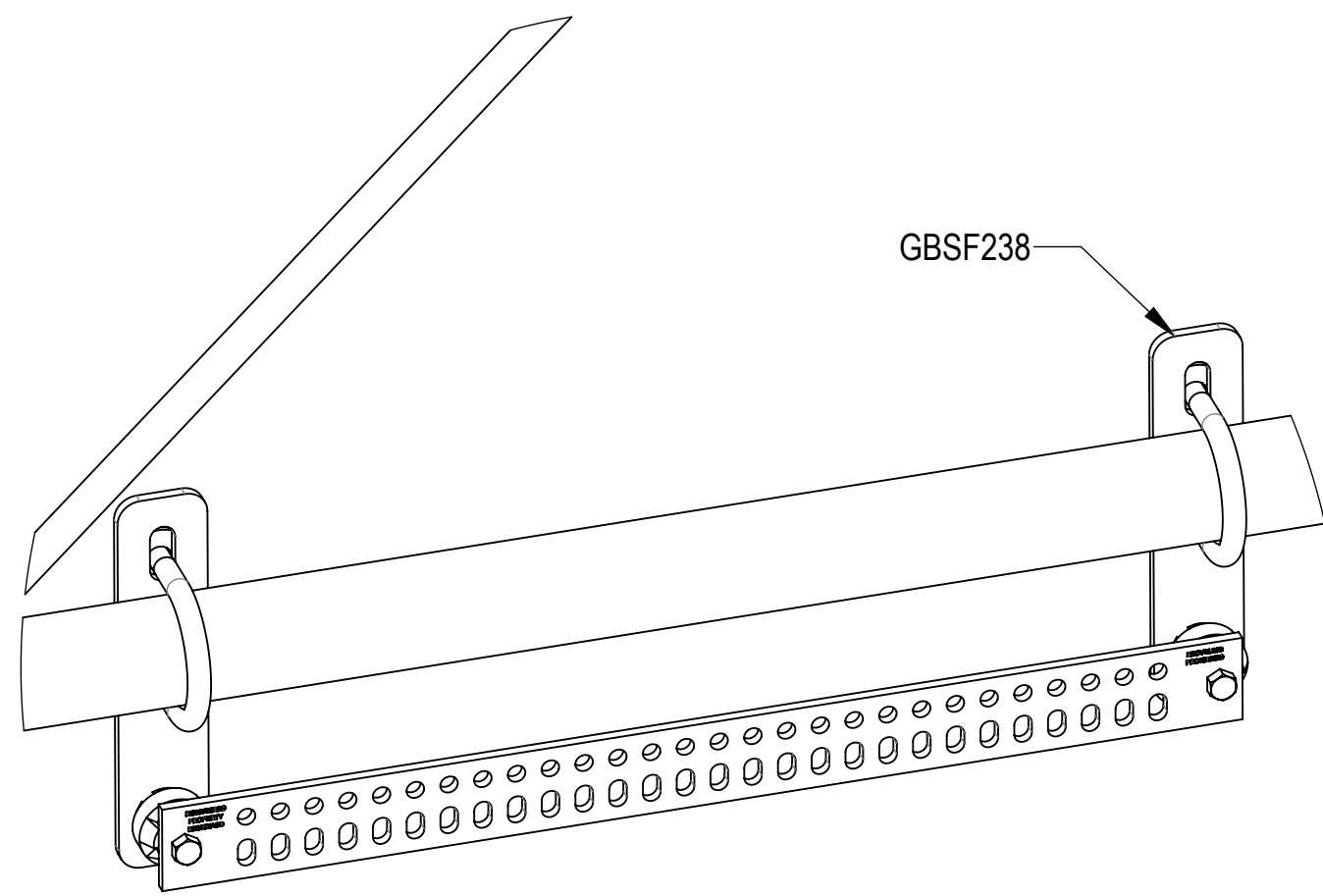
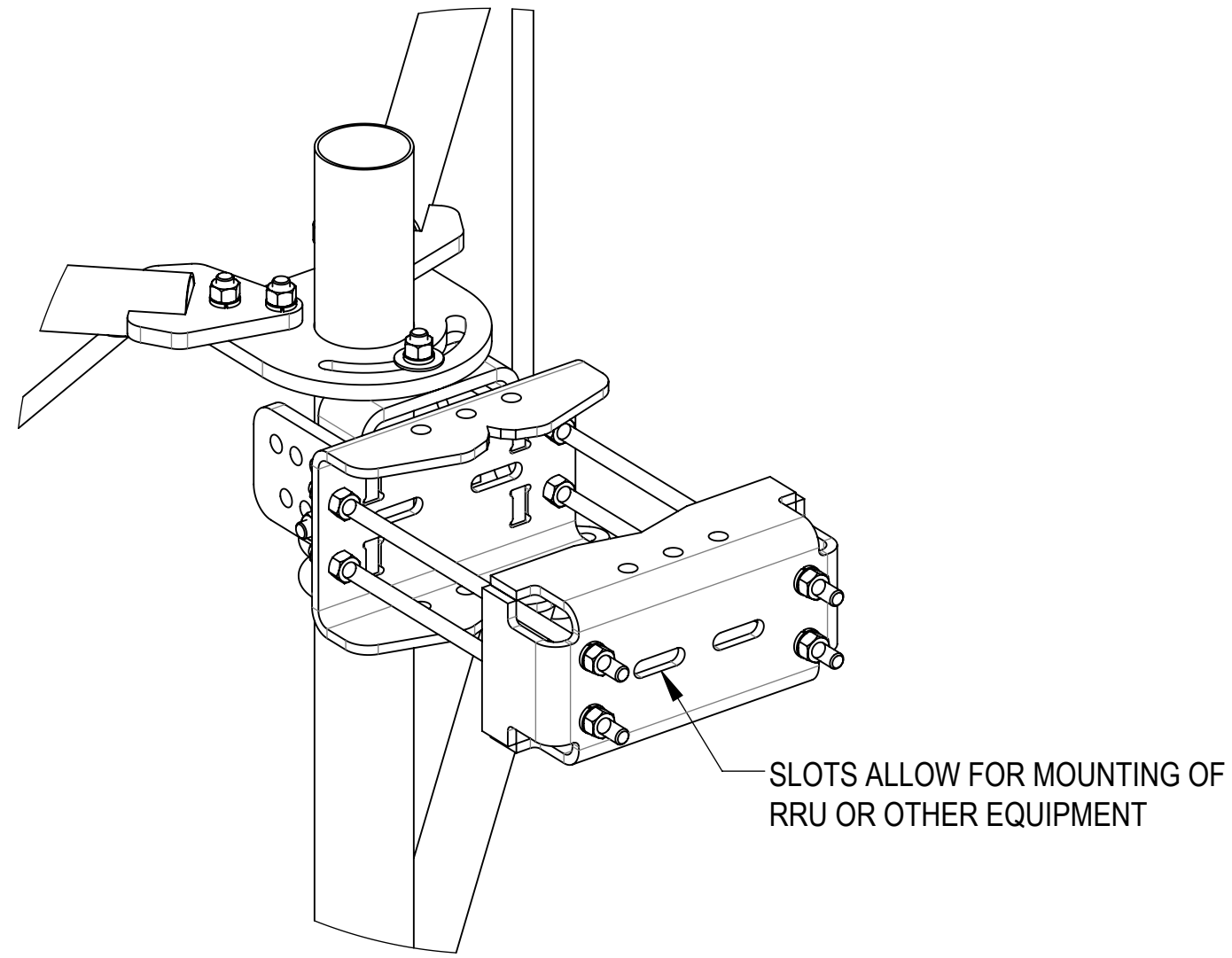


INSTALLED ON STANDARD TOWER SHOWN

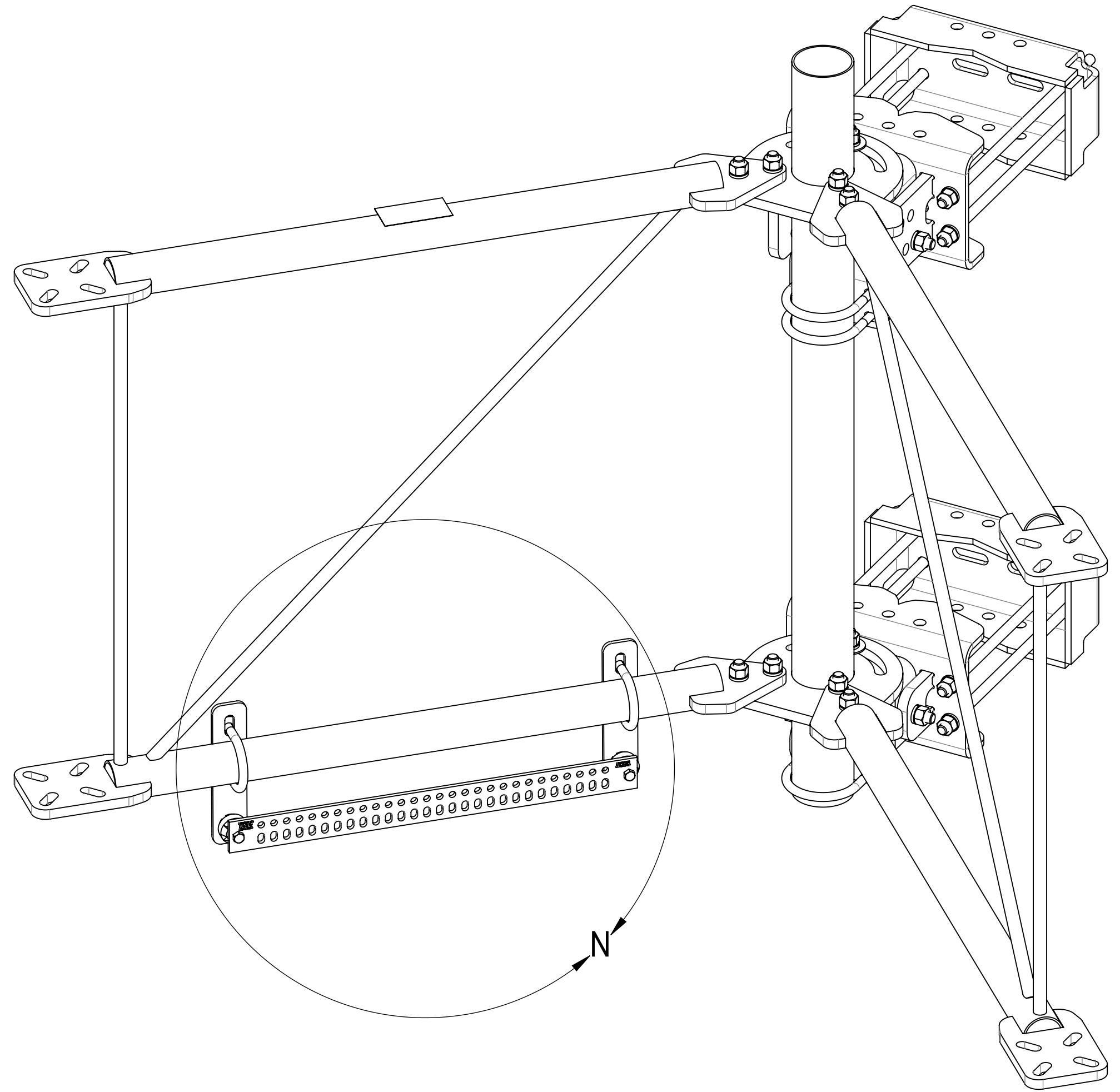
COMMSCOPE, INC. OF NORTH CAROLINA				
TITLE SF, 13', (4) 2.88" X 120" - PIPES - PIM - SPACED				
SIZE C	SCALE 1:20	DOCUMENT NO. SFG22HDX-13-4-H10		
		DRAWING		SHEET
		VERSION	STATUS	REVISION
		01	RE	B
				SHEET 5 OF 6

OPTIONAL ACCESSORIES:

BUS BAR MOUNT KIT GBSF238 IS WELL SUITED TO BE USED SHOULD THE NEED ARISE
NOTE THAT THIS KIT DOES NOT INCLUDE THE ISOLATORS OR BUS BAR



DETAIL N
SCALE 1 : 4



ISO VIEW

COMMSCOPE, INC. OF NORTH CAROLINA				
TITLE SF,13',(4)2.88"X120"-PIPES-PIM-SPACED				
SIZE C	SCALE 1:6	DOCUMENT NO. SFG22HDX-13-4-H10		
		DRAWING		SHEET 6 OF 6
		VERSION 01	STATUS RE	