

4

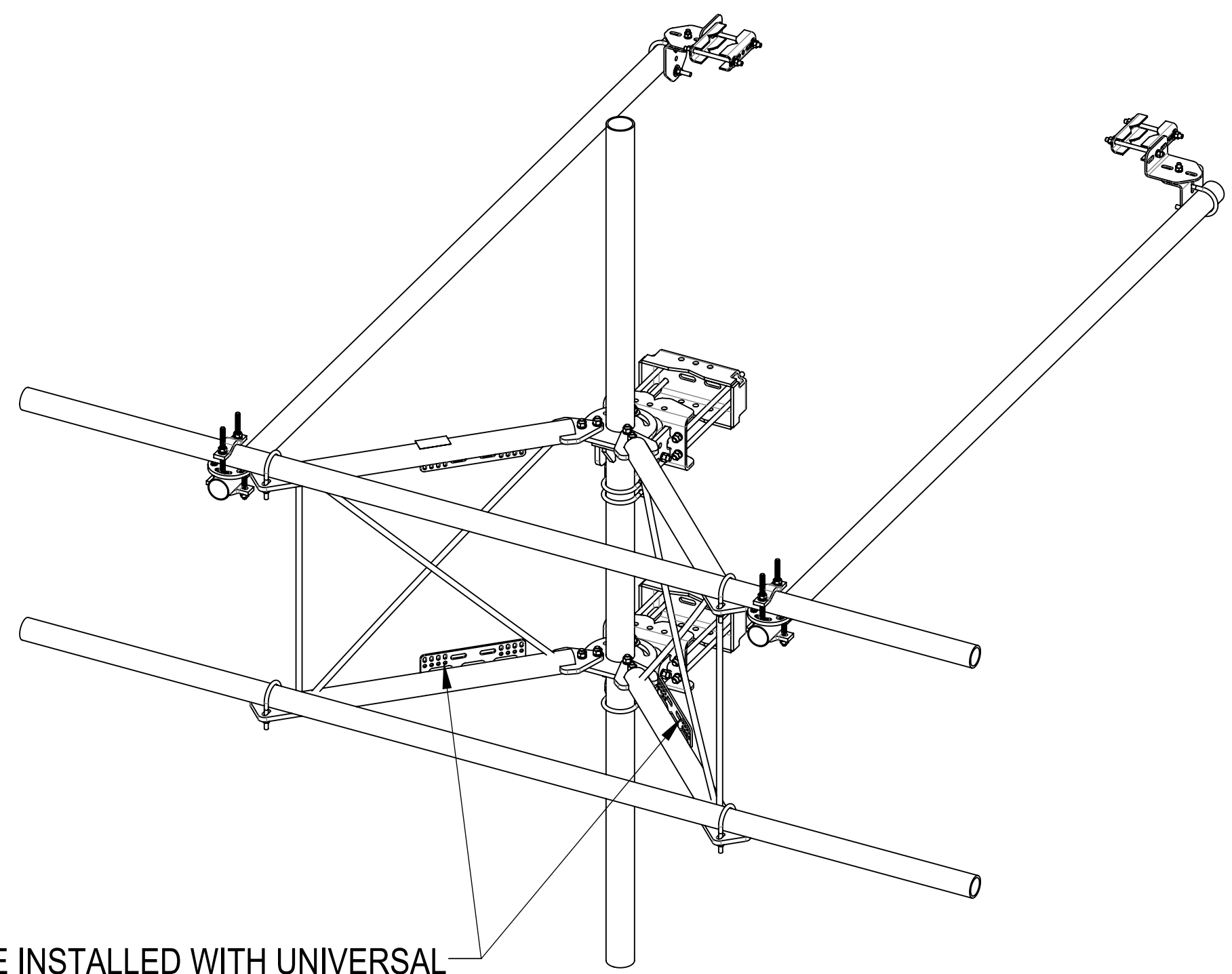
3

2

1

- 1.0 GENERAL NOTES
 - 1.1 ALL METRIC DIMENSIONS ARE IN BRACKETS [X. X]
 - 1.2 FOR PATENT INFO: <https://www.cs-pat.com>
- 2.0 DESIGN NOTES
 - 2.1 ANY HAZARDS OR OBSTRUCTIONS TO THE CLIMBING FACILITY AND SAFETY CLIMB MUST BE IDENTIFIED PRIOR TO INSTALLING THE APPURTENANCE. ADDITIONAL PRODUCTS MAY BE REQUIRED TO MAINTAIN THE INTEGRITY OF THE SAFETY CLIMB. DURING INSTALLATION, TEMPORARY AND/OR PERMANENT PRECAUTIONARY MEASURES SHOULD BE TAKEN TO PRESERVE THE CLIMBING FACILITY AND/OR SAFETY CLIMB.
 - 2.2 UP TO 5.0° TAPER AVAILABLE ON MODELS THAT SUPPORT ADJUSTMENT
- 3.0 MANUFACTURING/SPECIAL REQUIREMENTS
 - 3.1 TIGHTEN ALL BOLTS SECURING FLAT PLATES BY THE TURN-OF-NUT METHOD. TIGHTEN ALL U-BOLTS USING TURN-OF-NUT METHOD WITH ATTENTION TO LEAVE EQUAL DISTANCE AND EQUAL FORCE ON EACH LEG OF THE U-BOLT.
- 4.0 TEST
- 5.0 PACKAGING
 - 5.1 PACKAGING SHALL MEET COMMSCOPE REQUIREMENTS PER DOCUMENT IS-PL-3005.
 - 5.2 PRINTED DOCUMENT TO BE PLACED INSIDE POLYBAG AND THEN IN SHIPPING CONTAINER.
 - 5.3 EXTRA HARDWARE MAY BE SUPPLIED, BAGGED AND SHIPPED.

REVISIONS			
REV.	DESCRIPTION	DATE	APPROVED
A	INITIAL RELEASE	YMENG 15SEP23	YW1047 40179448CMO
B	UPDATED SFG23175 TO ADD UNIVERSAL INTERFACE PLATES	RY1002 22AUG24	XK1001 40202713CMO



SHOULD BE INSTALLED WITH UNIVERSAL INTERFACE PLATES FACING OUTWARDS

COMMSCOPE, INC. OF NORTH CAROLINA												
TOLERANCES					SAP MATERIAL MASTER							
1 PLACE .X[X] ± 0.2[6.3]			3 PLACE .XXX[X] ± 0.060[1.5]		SFG23RHDX-11-B							
2 PLACE .XX[X] ± 0.12[3.0]				ANGLES ± 2°								
FINISH					MATERIAL							
			SF, 11', BASE-KIT									
			SCALE		DOCUMENT NO.							
			1:16		SFG23RHDX-11-B							
			ECN 40202713CMO									
SIZE		Auth Group		INSL		MODEL			DRAWING			
C						VERSION			STATUS			
				01			RE			B		
				01			RE			B		
SHEET 1 OF 5												

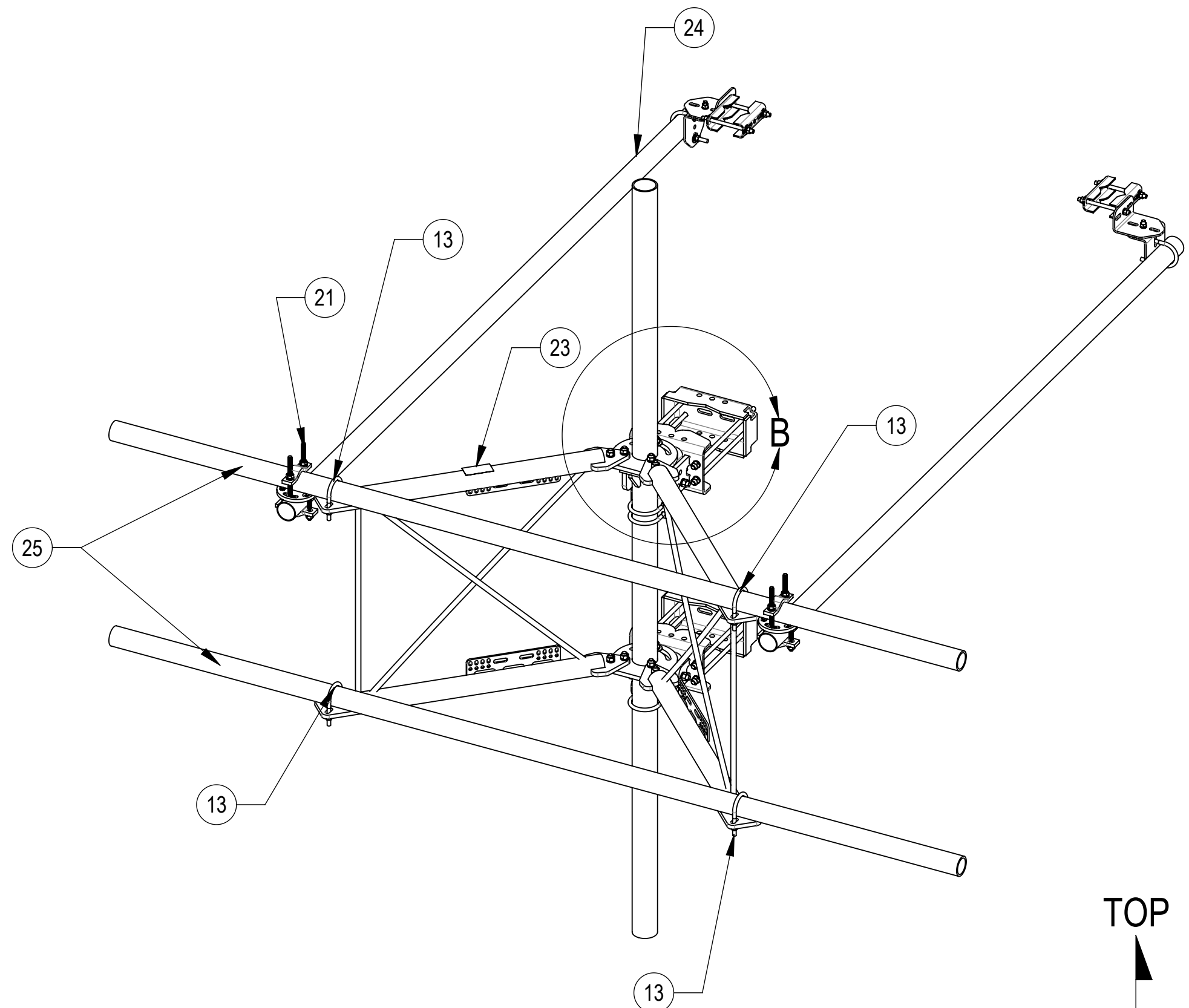
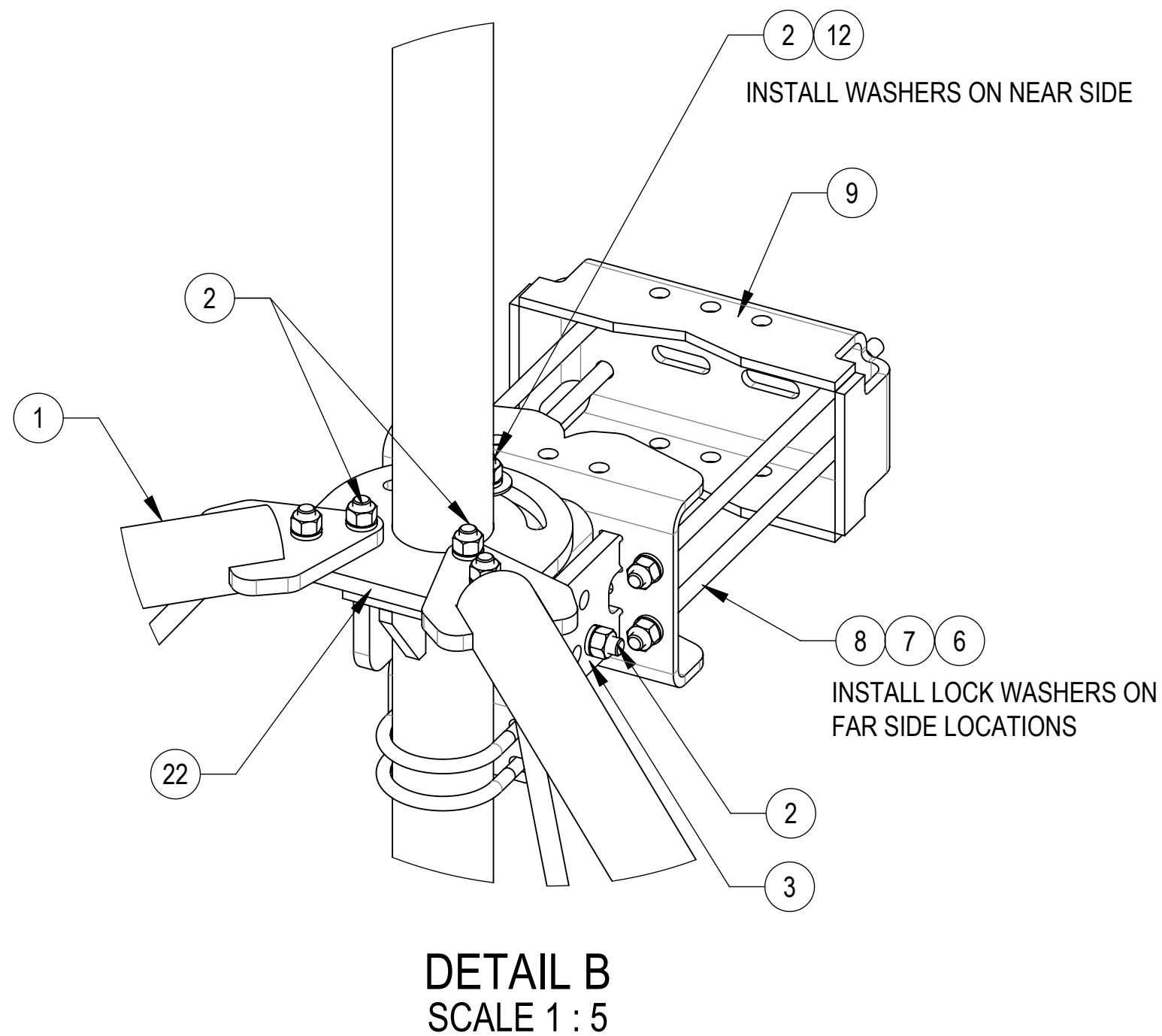
DENSITY		lbs/in ³
MASS	626.55	lbs
VOLUME	2210.79	in ³
SURFACE AREA	18981.41	in ²
HEIGHT	120"	
LENGTH	132"	
WIDTH	120"	

4

3

2

1

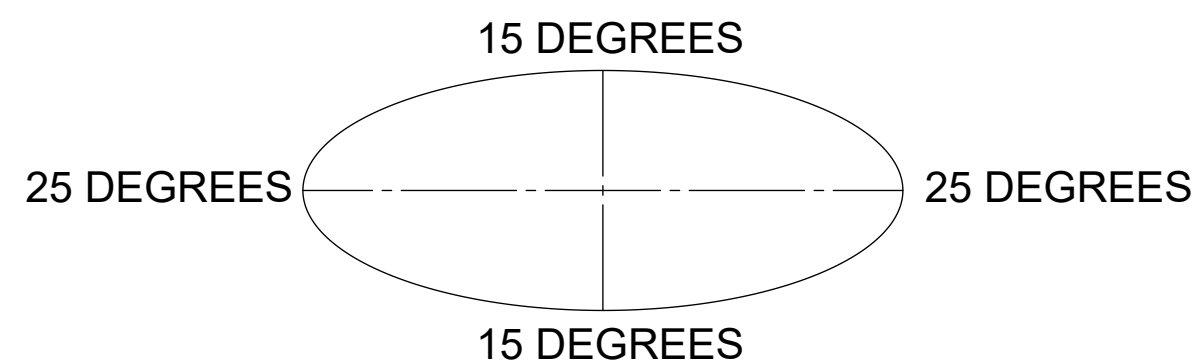


COMPONENT PART NUMBERS PROVIDED FOR ASSEMBLY PURPOSES;
INDIVIDUAL COMPONENTS MAY BE SHIPPED AS PARTS WITHIN AN INCLUDED KIT.

ITEM	PART NO.	DESCRIPTION	QTY.	WEIGHT	NOTE NO.
1	SFG23175	ARM STANDOFF SFG23	2	66.67 LBS	
2	GB-05225	5/8" X 2-1/4" GALV BOLT KIT	14	0.28 LBS	
3	SFG2380	WELDMENT, HD, TOP TAPER BRACKET	1	22.78 LBS	
4	SFG2386	WELDMENT, SFG2 AZIMUTH BRACKET	1	10.07 LBS	
5	SFG2397-00	WELDMENT, G23 AZIMUTH BRACKET	1	7.94 LBS	
6	GN-05	5/8" GALV HEX NUT	24	0.08 LBS	
7	GWL-05	5/8" GALV LOCK WASHER	16	0.03 LBS	
8	MT-382-18	5/8" X 18" THREADED ROD	8	1.43 LBS	
9	SFG2289	G2 RRU BACK CLAMP, HD	2	18.65 LBS	
10	SFG2381	WELDMENT, HD, LOWER TOWER LEG BRACKET	1	17.42 LBS	
11	GUB-4355	1/2" X 3-5/8" X 5" GALV U-BOLT	3	0.71 LBS	
12	GWF-05	5/8" GALV FLAT WASHER, 1.7OD	2	0.06 LBS	
13	GUB-4352	1/2" X 3" X 5-1/4" GALV U-BOLT	6	0.71 LBS	
14	SAB01	FORMED CLAMP	4	1.35 LBS	
15	MT-379-8	1/2" X 8" GALV THREADED ROD	4	0.45 LBS	
16	XAU01	ANGLE, CROSSOVER, 1.9-3.5" X 1.9-3.5" OD	4	2.98 LBS	
17	GB-04145	1/2" X 1-1/2" GALV BOLT KIT	2	0.13 LBS	
18	GWF-04	1/2" GALV FLAT WASHER	8	0.04 LBS	
19	GWL-04	1/2" GALV LOCK WASHER	10	0.01 LBS	
20	GN-04	1/2" GALV HEX NUT	10	0.04 LBS	
21	XP-R	CROSSOVER PLATE, ROUND, UP TO 3.5" OD	2	6.20 LBS	
22	SFG2204	WELDMENT, BACK VERTICAL ARM MOUNT	1	97.29 LBS	
23	SFG2398	LABEL, SFG23RHDX	1	0.04 LBS	
24	MT546120120	PIPE, 2.875"OD X 120"	2	35.44 LBS	
25	MT546132276	PIPE, 2.875"OD X 132"	2	84.58 LBS	

ALLOWABLE TIEBACK ANGLE

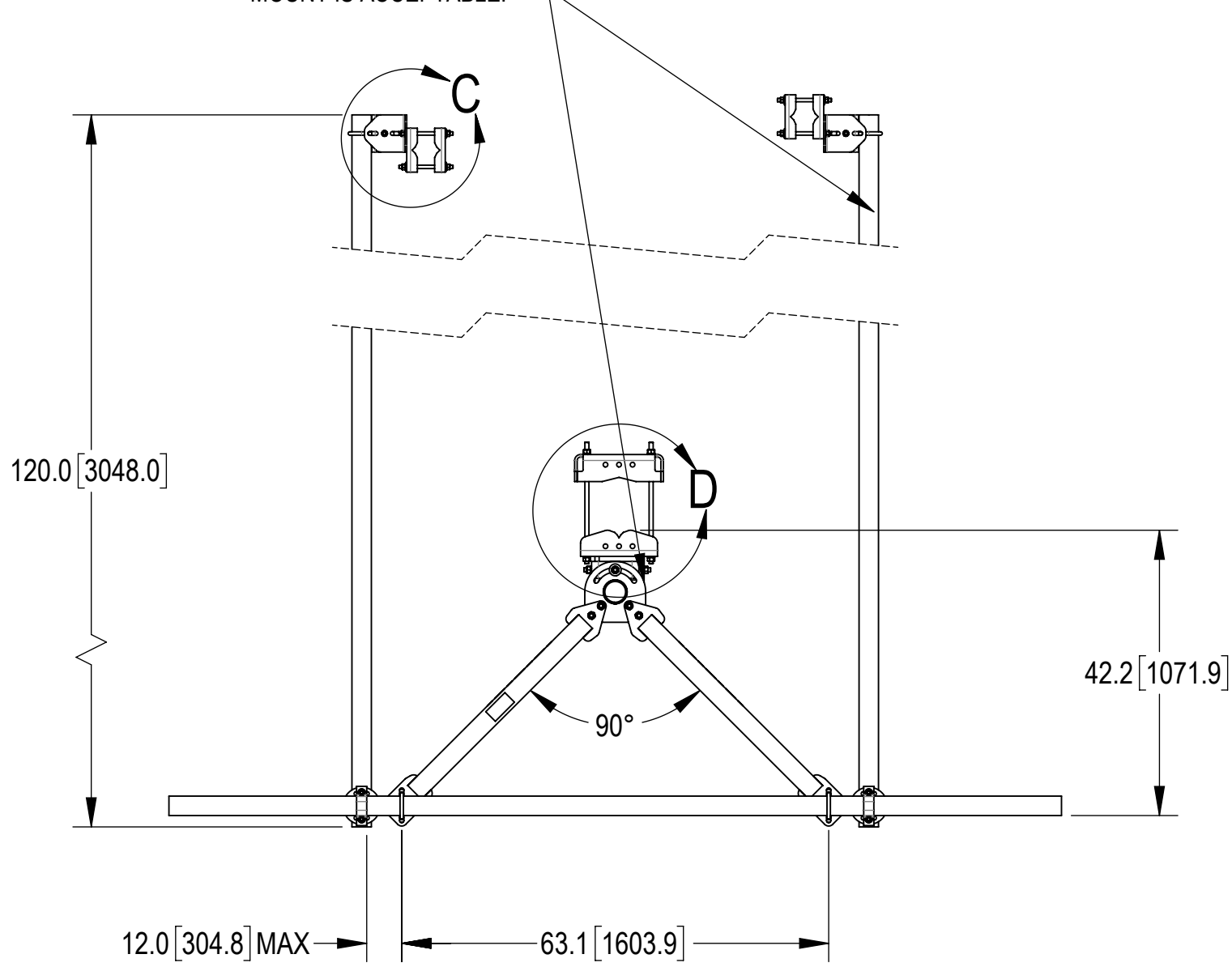
±15 DEGREES VERTICAL
±25 DEGREES HORIZONTAL



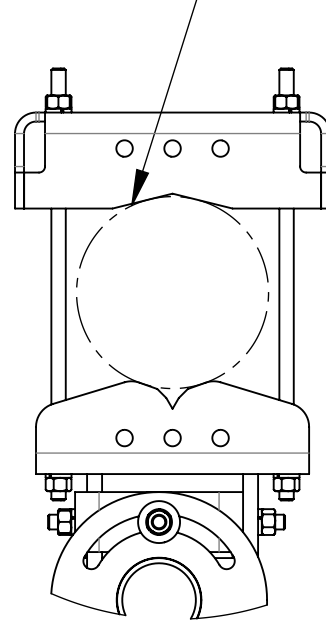
COMMSCOPE, INC. OF NORTH CAROLINA

TITLE				
SF,11',BASE-KIT				
SIZE	SCALE	DOCUMENT NO.		
C	1:32	SFG23RHDX-11-B		
DRAWING				SHEET 2 OF 5
VERSION	STATUS	REVISION		
01	RE	B		

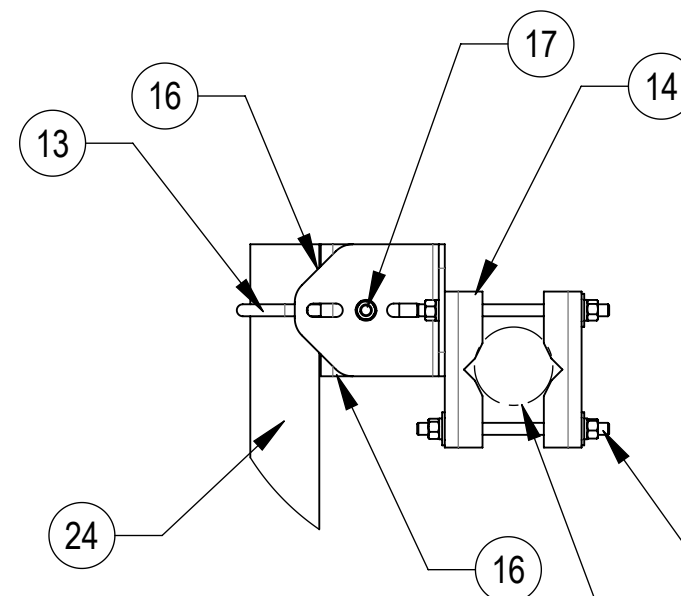
TIEBACK MUST BE CONNECTED TO A RIGID MEMBER THAT PROVIDES ADEQUATE SUPPORT WITHIN THE LIMITS NOTED IN THE TIEBACK ANGLE RANGE DETAIL. UNLESS APPROVED BY ENGINEER OF RECORD. SPINE STEM OF NEIGHBORING MOUNT IS ACCEPTABLE.



FOR POLES UP TO 8.0" IN DIAMETER

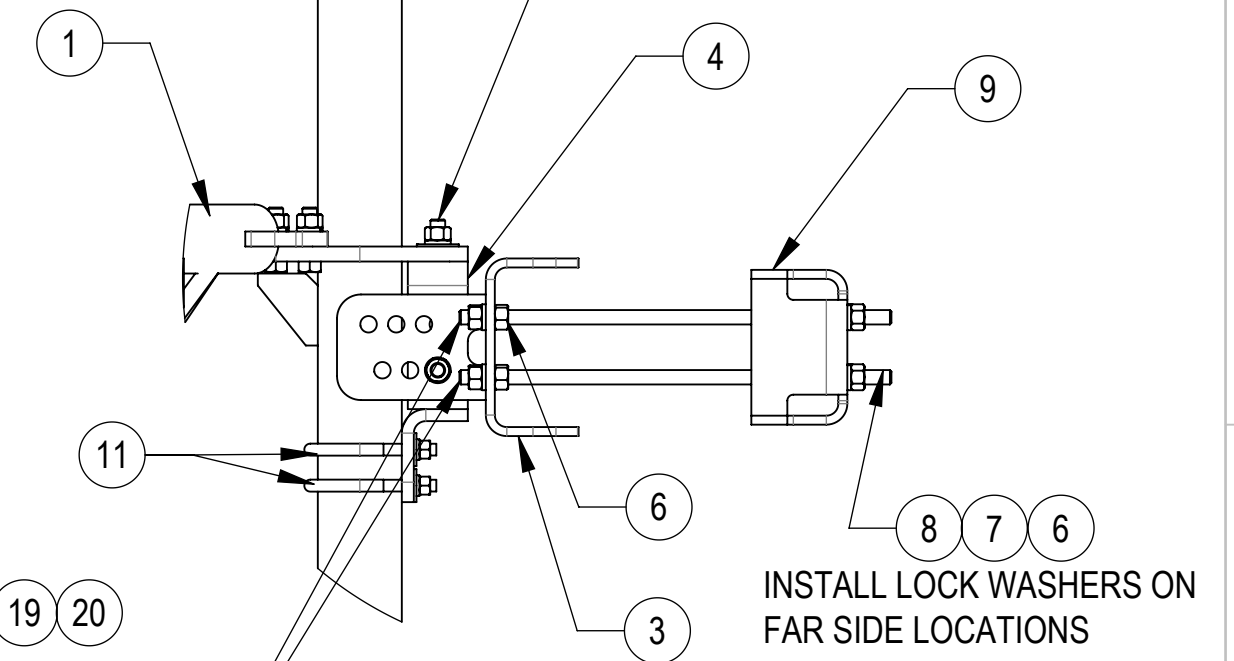


DETAIL D
SCALE 1 : 8



DETAIL C
SCALE 1 : 8

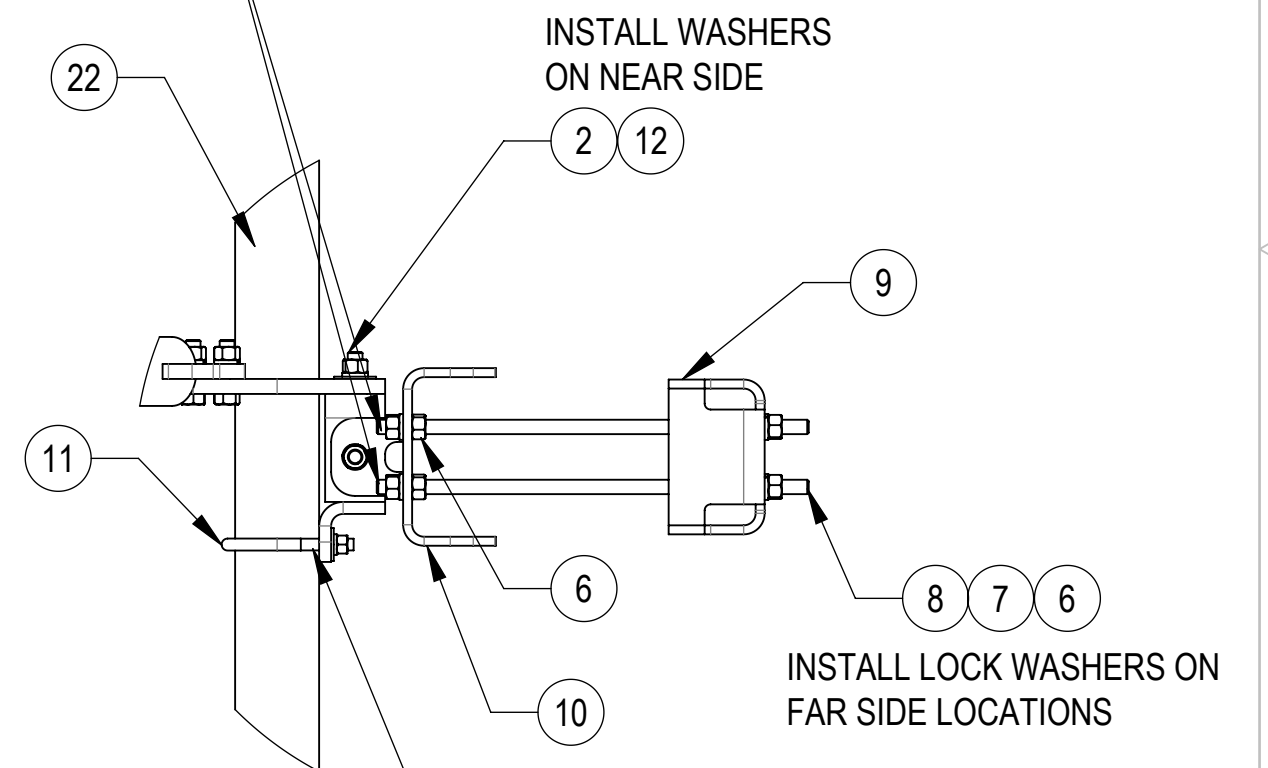
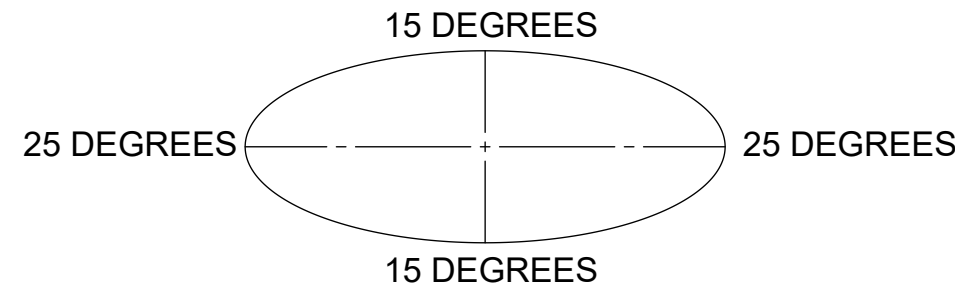
FOR POLES UP TO 3.25" IN DIAMETER



DETAIL E
SCALE 1 : 8

THE THREADED ROD CAN ONLY EXPOSE 4 TO 7 THREADS ON ONE SIDE OF THE BRACKET, WHICH IS TO PREVENT INTERFERENCE WITH THE SIDE BOLTS

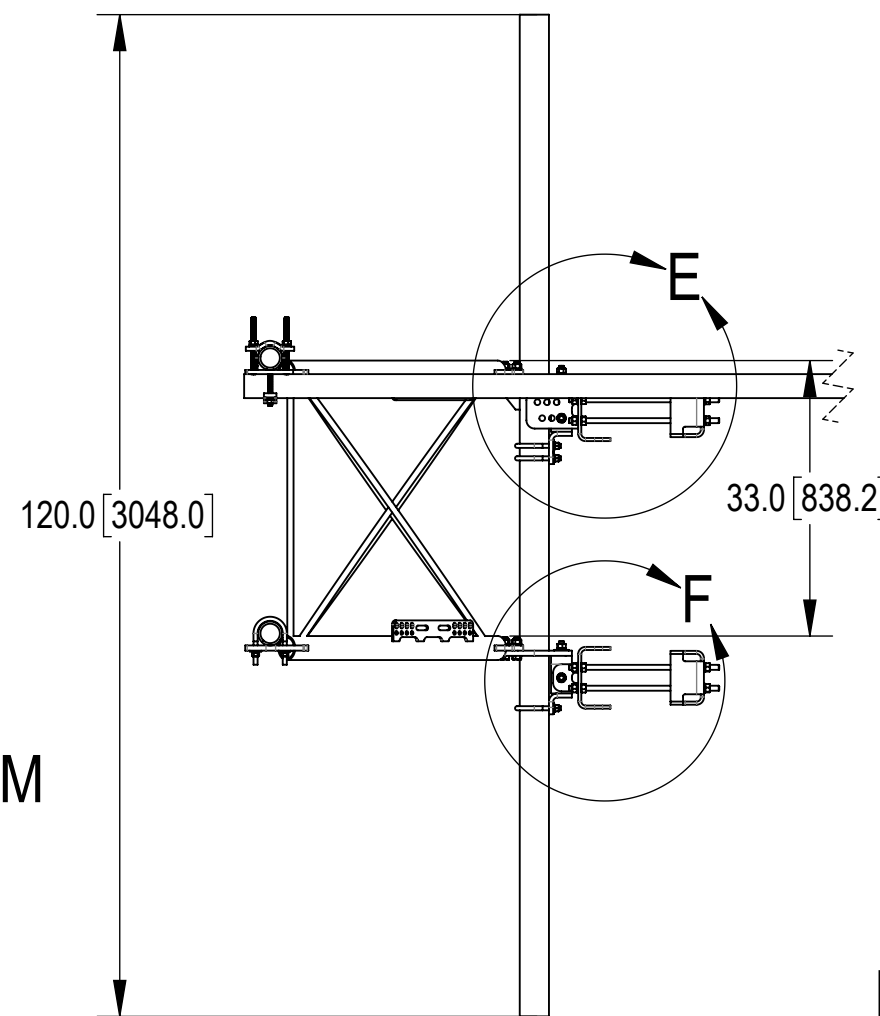
ALLOWABLE TIEBACK ANGLE
± 15 DEGREES VERTICAL
± 25 DEGREES HORIZONTAL



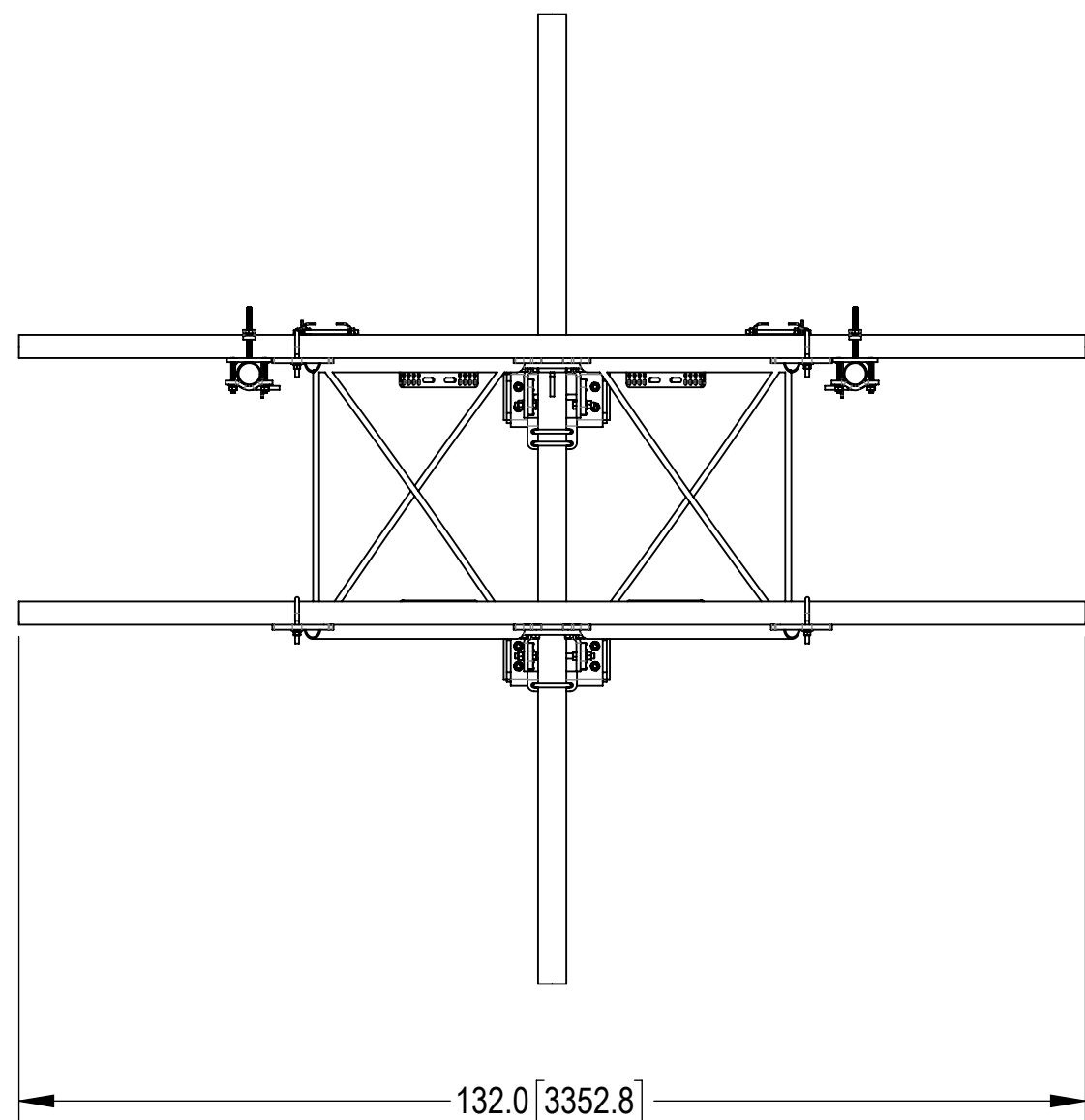
DETAIL F
SCALE 1 : 8

DO NOT OVER TIGHTEN, END OF POLE CAN BE DAMAGED

TOP
BOTTOM



DETAIL ISO BOTTOM ROTATED
CROP VIEW
SCALE 1 : 6



COMMSCOPE, INC. OF NORTH CAROLINA				
TITLE SF, 11', BASE-KIT				
SIZE C	SCALE 1:32	DOCUMENT NO. SFG23RHDx-11-B		
		DRAWING		SHEET
		VERSION	STATUS	REVISION
		01	RE	B
				3 OF 5

4

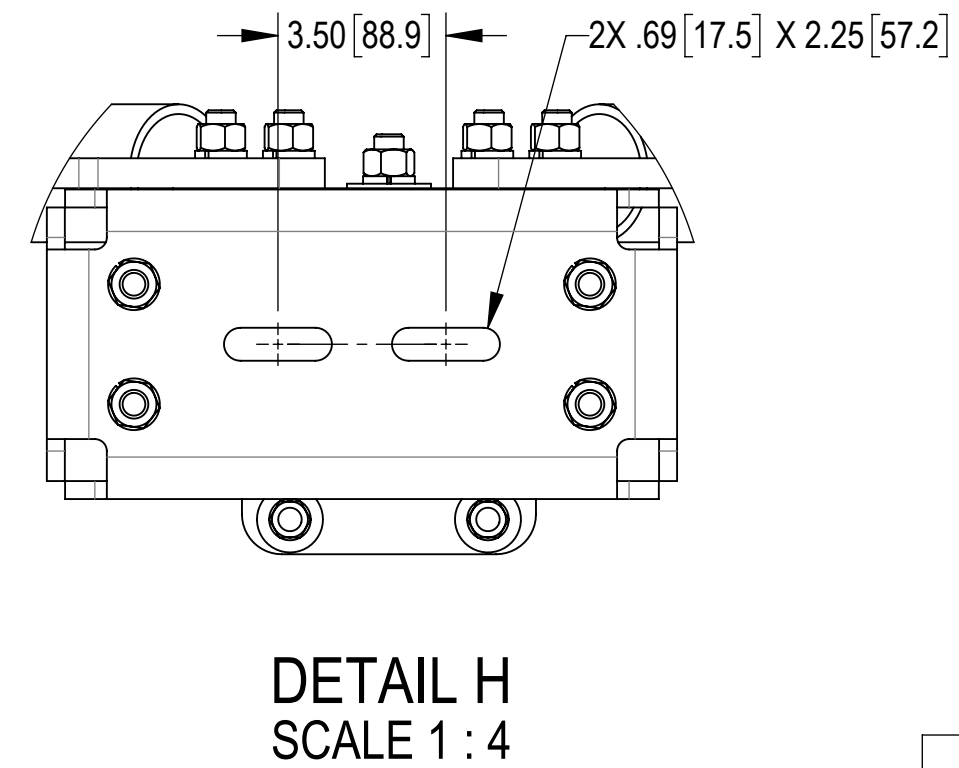
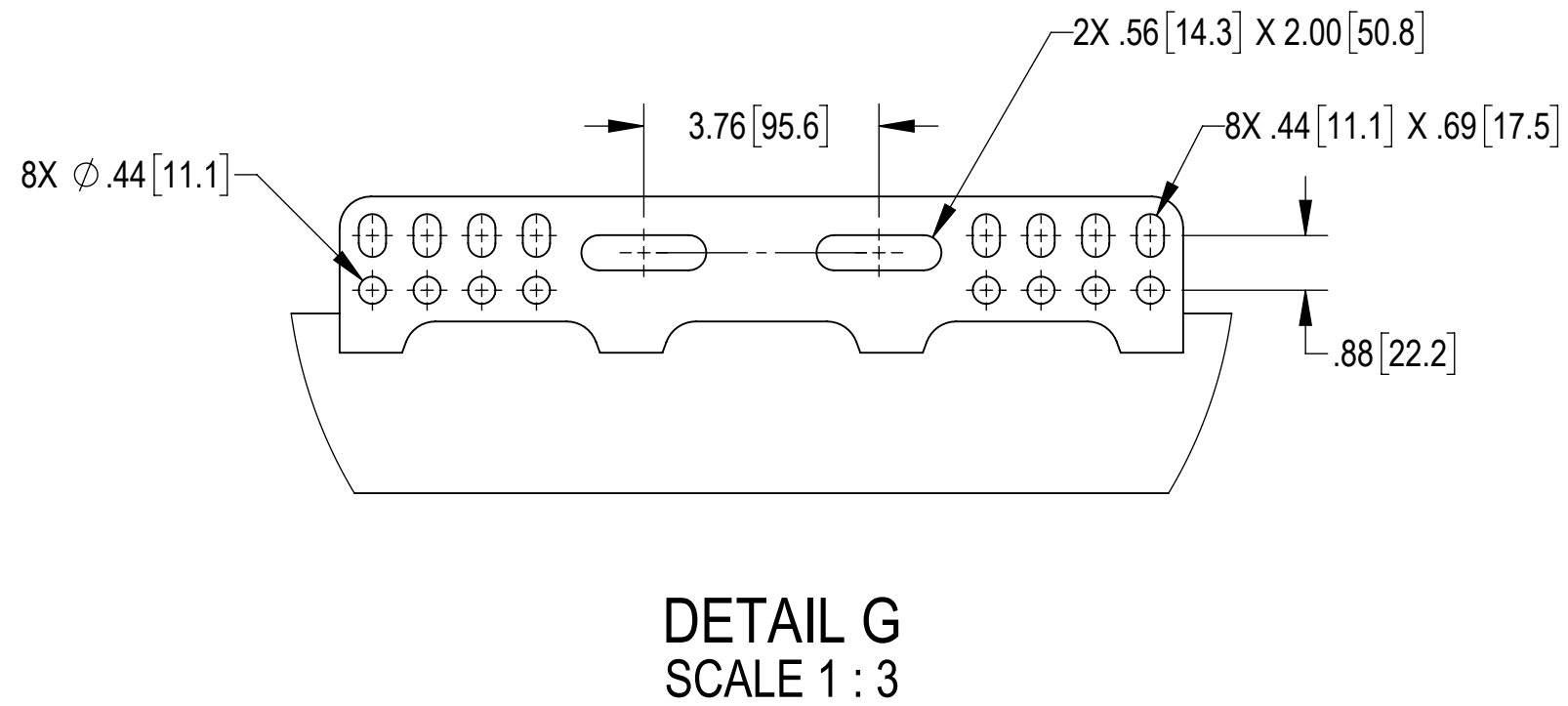
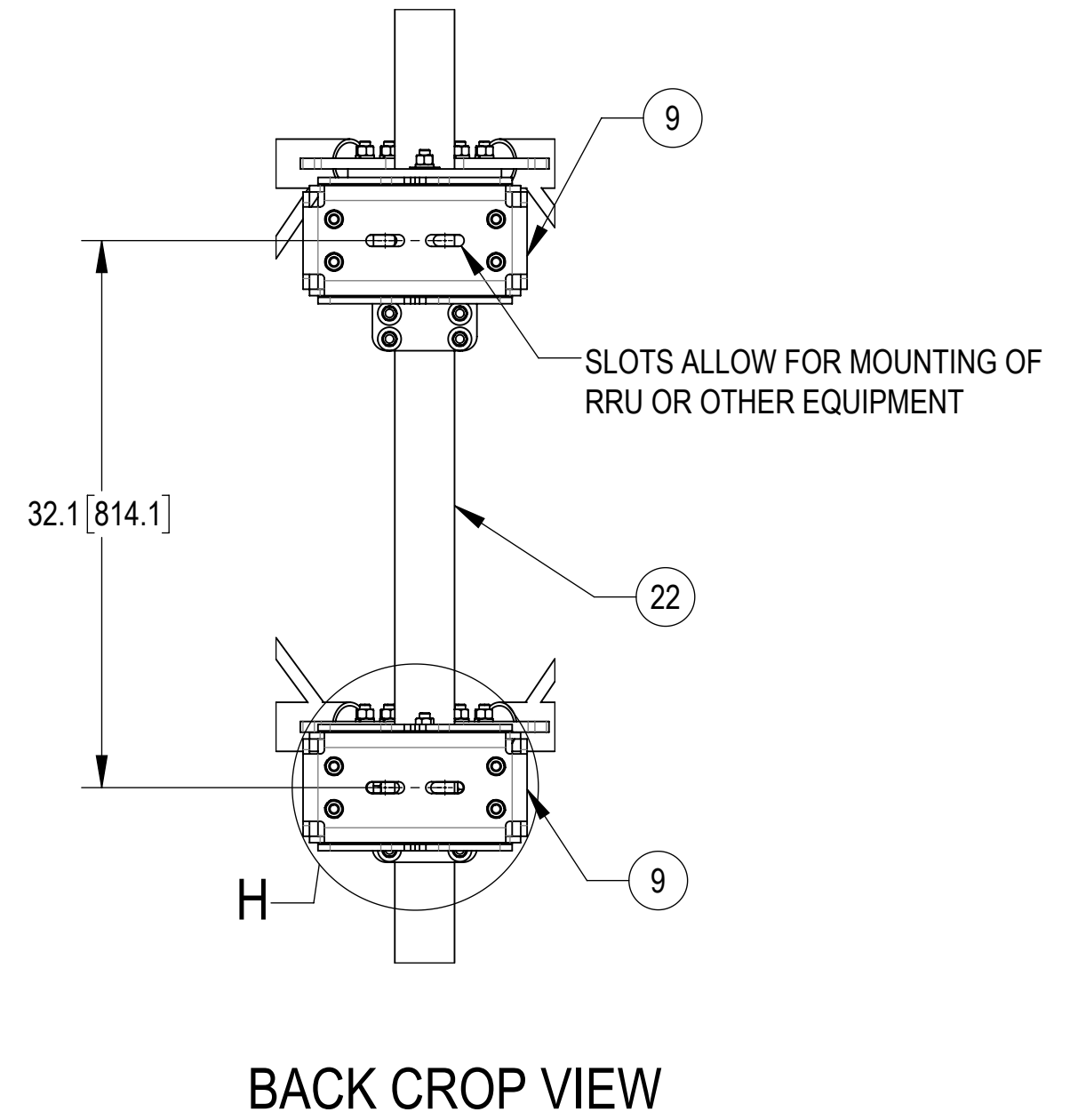
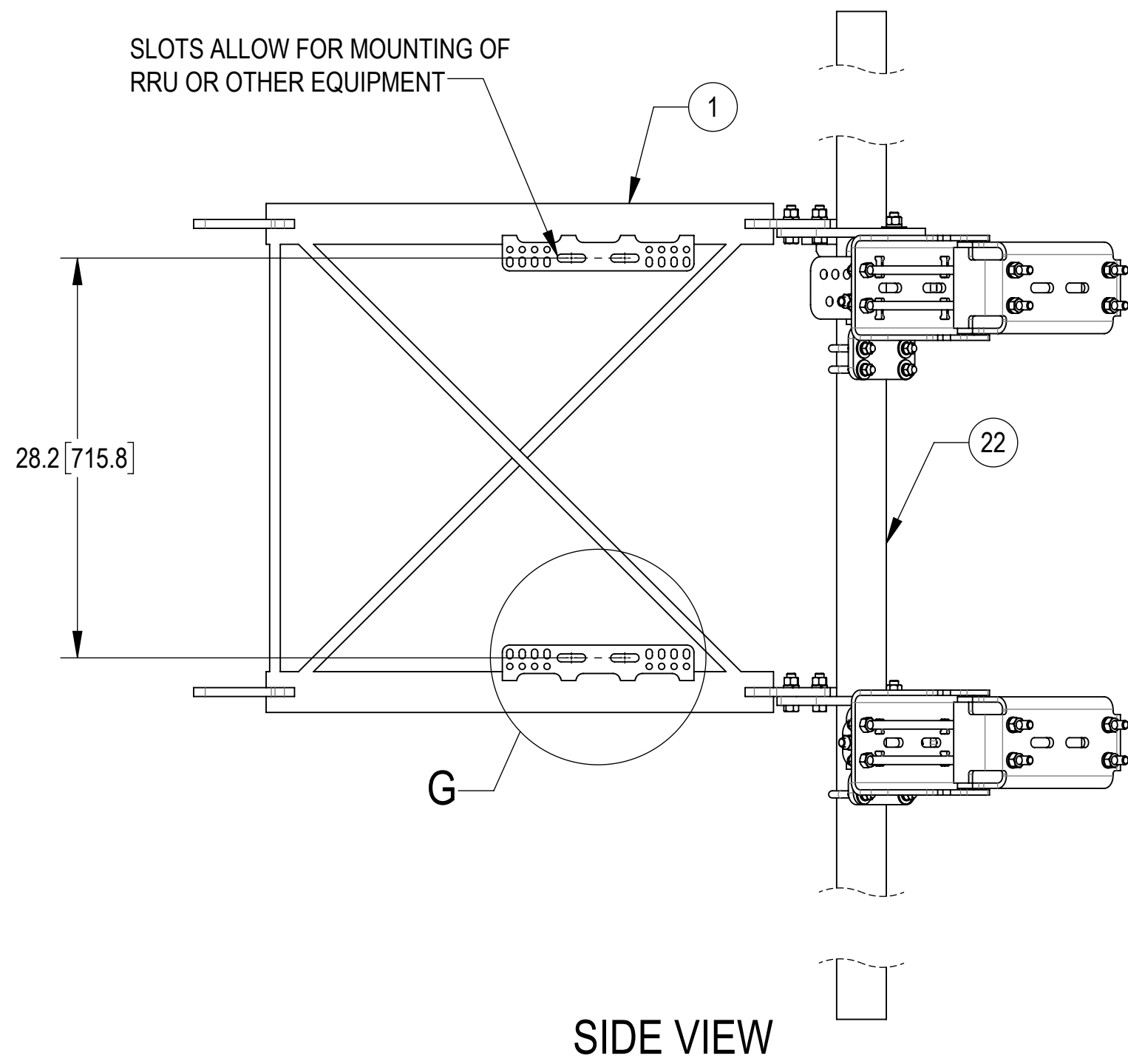
3

2

1

D

D



COMMSCOPE, INC. OF NORTH CAROLINA				
TITLE SF,11',BASE-KIT				
SIZE C	SCALE 1:10	DOCUMENT NO. SFG23RHDX-11-B		
		DRAWING		SHEET 4 OF 5
		VERSION 01	STATUS RE	

4

3

2

1

A

A

B

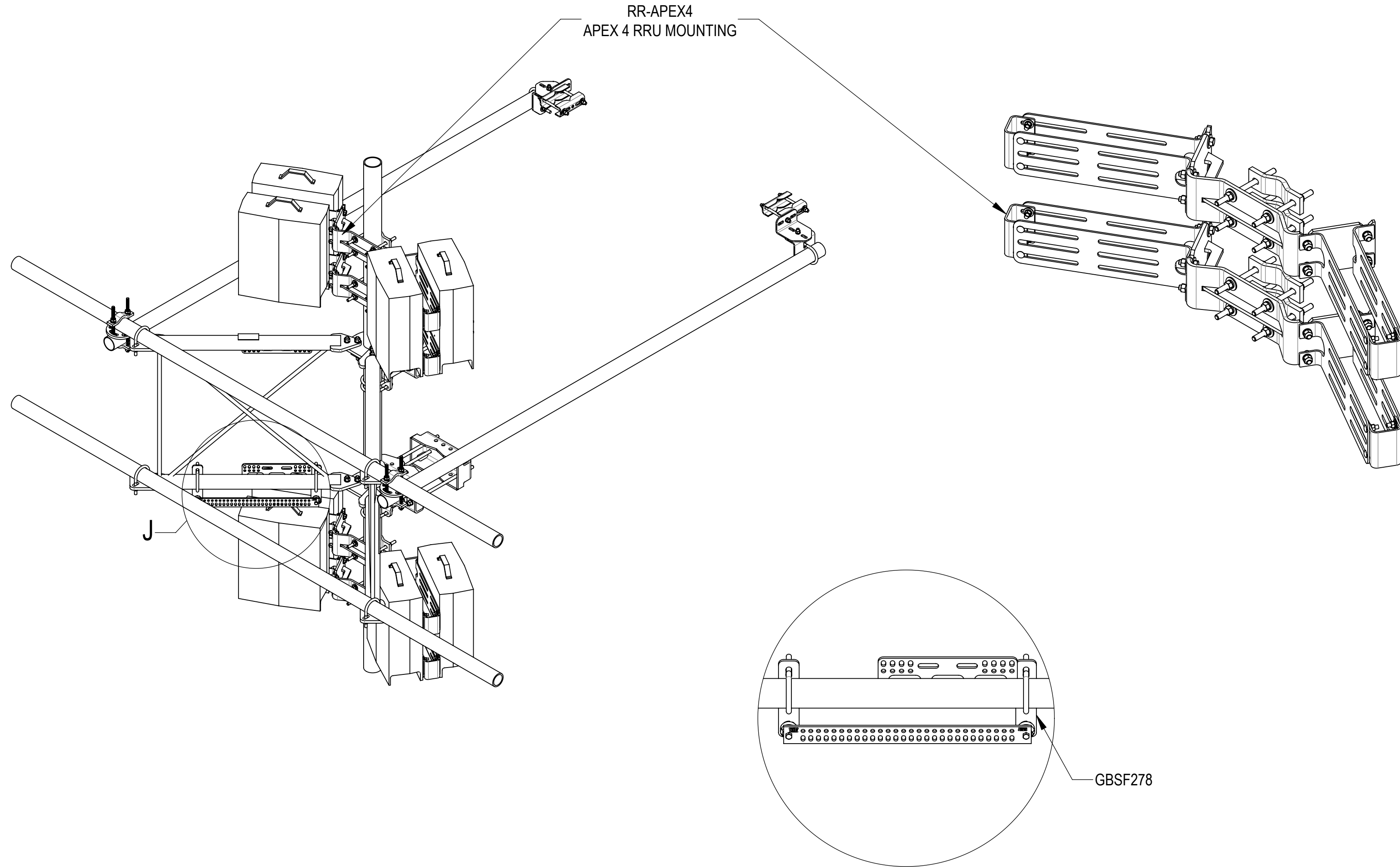
B

C

C

NOT ALL MATERIALS ARE INCLUDED WITH
ITEMS SHOWN ON THIS PAGE
SEE RESPECTIVE PART NUMBER DRAWING
BOM FOR DETAILS

ACCESSORIES ORDERED SEPARATELY:



DETAIL J
SCALE 1 : 8

COMMSCOPE, INC. OF NORTH CAROLINA				
TITLE SF,11',BASE-KIT				
SIZE C	SCALE 1:32	DOCUMENT NO. SFG23RHDX-11-B		
		DRAWING		SHEET
		VERSION	STATUS	REVISION
		01	RE	B
				5 OF 5