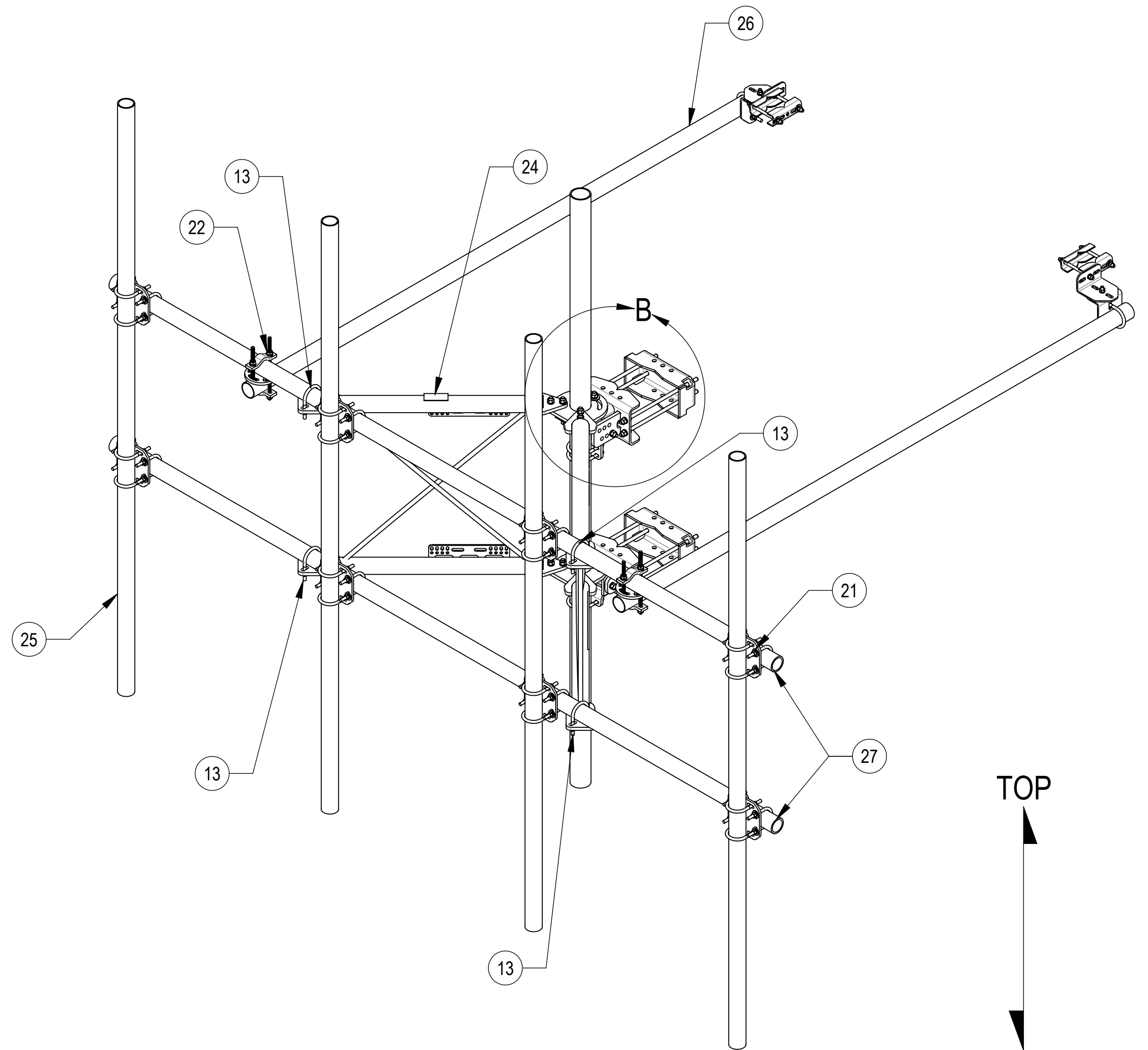
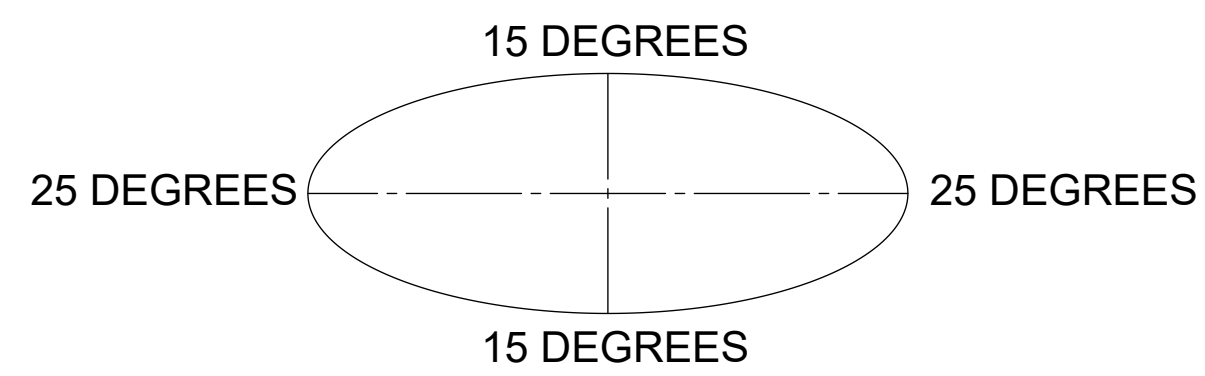


**DETAIL B**  
SCALE 1 : 5



**ALLOWABLE TIEBACK ANGLE**  
±15 DEGREES VERTICAL  
±25 DEGREES HORIZONTAL

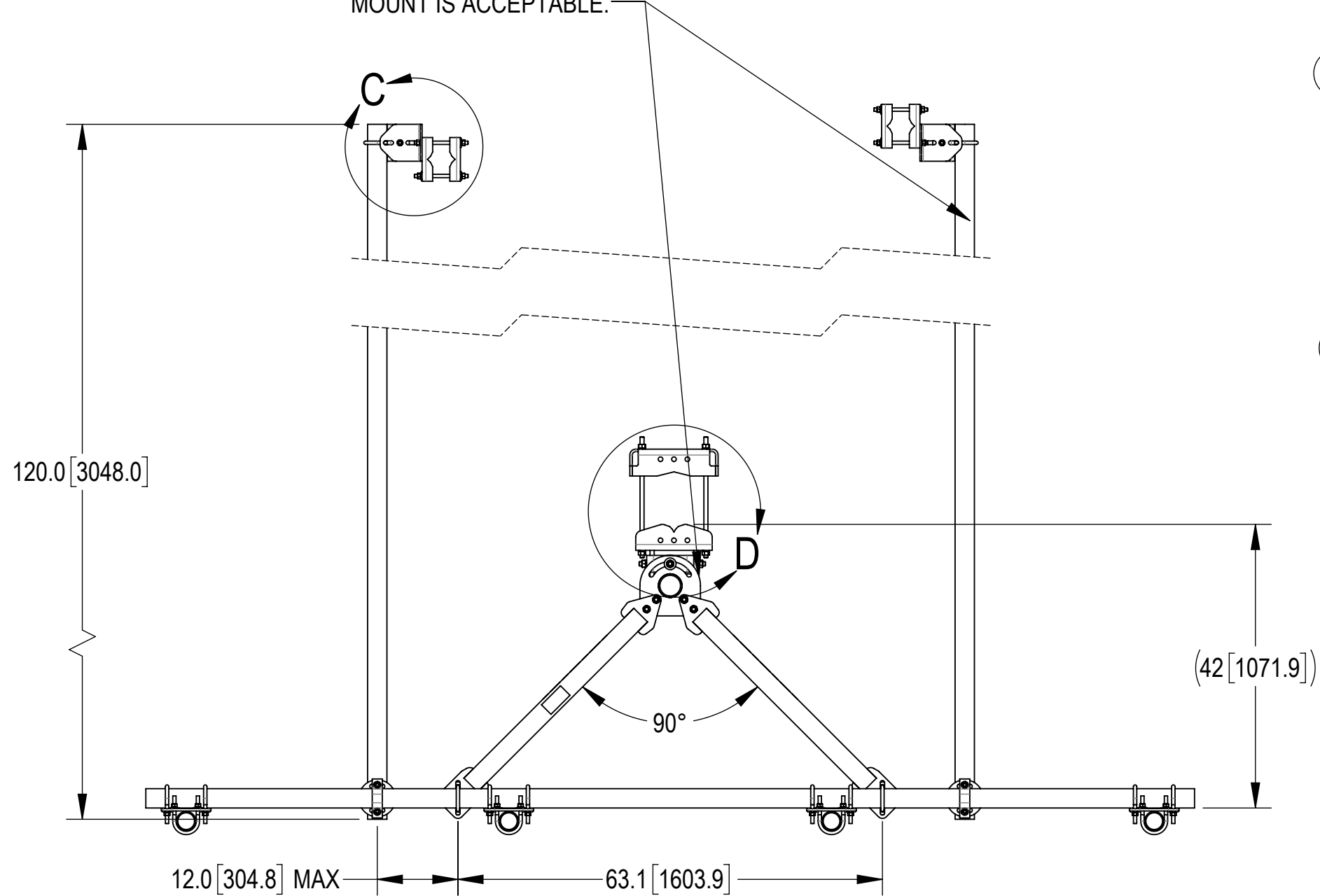


COMPONENT PART NUMBERS PROVIDED FOR ASSEMBLY PURPOSES;  
INDIVIDUAL COMPONENTS MAY BE SHIPPED AS PARTS WITHIN AN INCLUDED KIT.

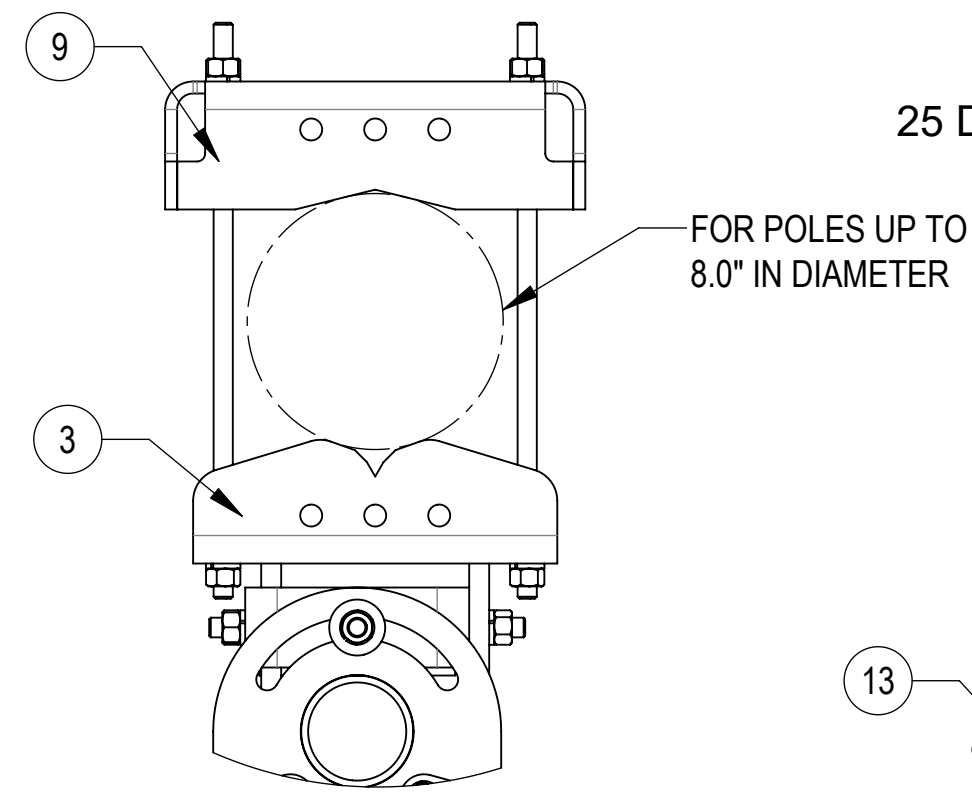
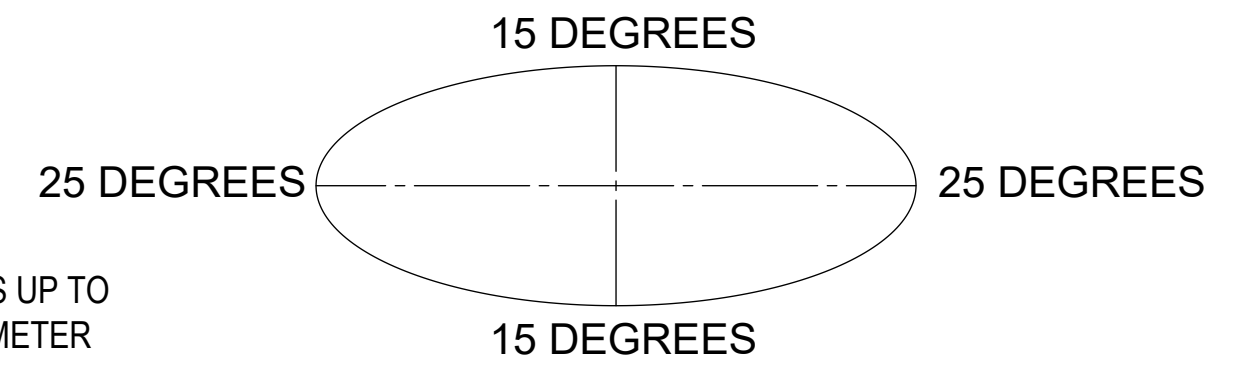
ITEM	PART NO.	DESCRIPTION	QTY.	WEIGHT	NOTE NO.
1	SFG23175	ARM STANDOFF SFG23	2	66.67 LBS	
2	GB-05225	5/8" X 2-1/4" GALV BOLT KIT	14	0.28 LBS	
3	SFG2380	WELDMENT, HD, TOP TAPER BRACKET	1	22.78 LBS	
4	SFG2386	WELDMENT, SFG2 AZIMUTH BRACKET	1	10.07 LBS	
5	SFG2397-00	WELDMENT, G23 AZIMUTH BRACKET	1	7.94 LBS	
6	GN-05	5/8" GALV HEX NUT	24	0.08 LBS	
7	GWL-05	5/8" GALV LOCK WASHER	16	0.03 LBS	
8	MT-382-18	5/8" X 18" THREADED ROD	8	1.43 LBS	
9	SFG2289	G2 RRU BACK CLAMP, HD	2	18.65 LBS	
10	SFG2381	WELDMENT, HD, LOWER TOWER LEG BRACKET	1	17.42 LBS	
11	GUB-4355	1/2" X 3-5/8" X 5" GALV U-BOLT	3	0.71 LBS	
12	GWF-05	5/8" GALV FLAT WASHER, 1.7OD	2	0.06 LBS	
13	GUB-4352	1/2" X 3" X 5-1/4" GALV U-BOLT	6	0.71 LBS	
14	SAB01	FORMED CLAMP	4	1.35 LBS	
15	MT-379-8	1/2" X 8" GALV THREADED ROD	4	0.45 LBS	
16	XAU01	ANGLE, CROSSOVER, 1.9-3.5" X 1.9-3.5" OD	4	2.98 LBS	
17	GB-04145	1/2" X 1-1/2" GALV BOLT KIT	2	0.13 LBS	
18	GWF-04	1/2" GALV FLAT WASHER	8	0.04 LBS	
19	GWL-04	1/2" GALV LOCK WASHER	10	0.01 LBS	
20	GN-04	1/2" GALV HEX NUT	10	0.04 LBS	
21	XP-2525	CROSSOVER PLATE KIT, 2-7/8 OD X 2-7/8 OD	8	8.37 LBS	
22	XP-R	CROSSOVER PLATE, ROUND, UP TO 3.5" OD	2	6.20 LBS	
23	SFG2204	WELDMENT, BACK VERTICAL ARM MOUNT	1	97.29 LBS	
24	SFG2398	LABEL, SFG23RHDX	1	0.04 LBS	
25	MT546120	PIPE, 2.875"OD X 120"	4	57.45 LBS	
26	MT546120120	PIPE, 2.875"OD X 120"	2	35.44 LBS	
27	MT546156276	PIPE, 2.875"OD X 156"	2	99.95 LBS	

COMMSCOPE, INC. OF NORTH CAROLINA				
TITLE PG,SF,13'FP,(4)120"AP				
SIZE <b>C</b>	SCALE <b>1:32</b>	DOCUMENT NO. <b>SFG23RHDX-13-4-120</b>		
DRAWING		VERSION	STATUS	REVISION
		01	RE	B
				SHEET 2 OF 7

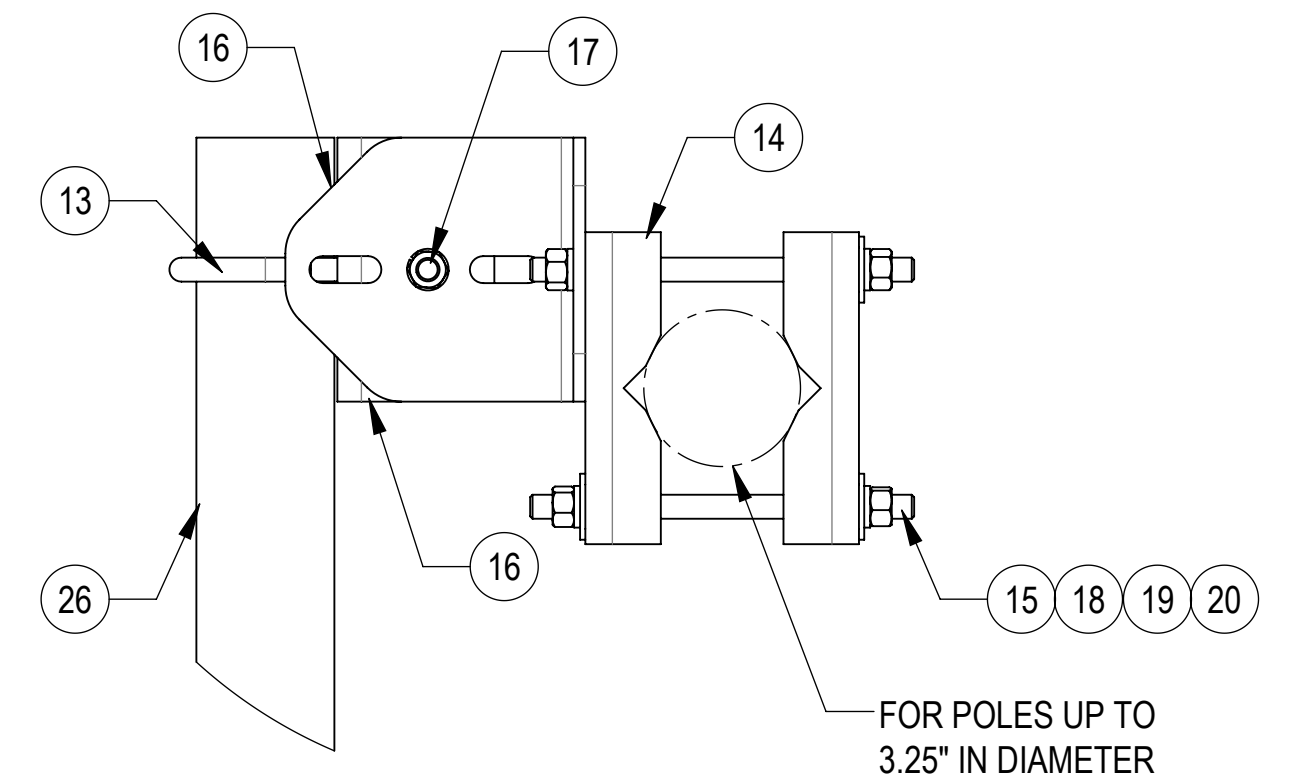
TIEBACK MUST BE CONNECTED TO A RIGID MEMBER THAT PROVIDES ADEQUATE SUPPORT WITHIN THE LIMITS NOTED IN THE TIEBACK ANGLE RANGE DETAIL. UNLESS APPROVED BY ENGINEER OF RECORD. SPINE STEM OF NEIGHBORING MOUNT IS ACCEPTABLE.



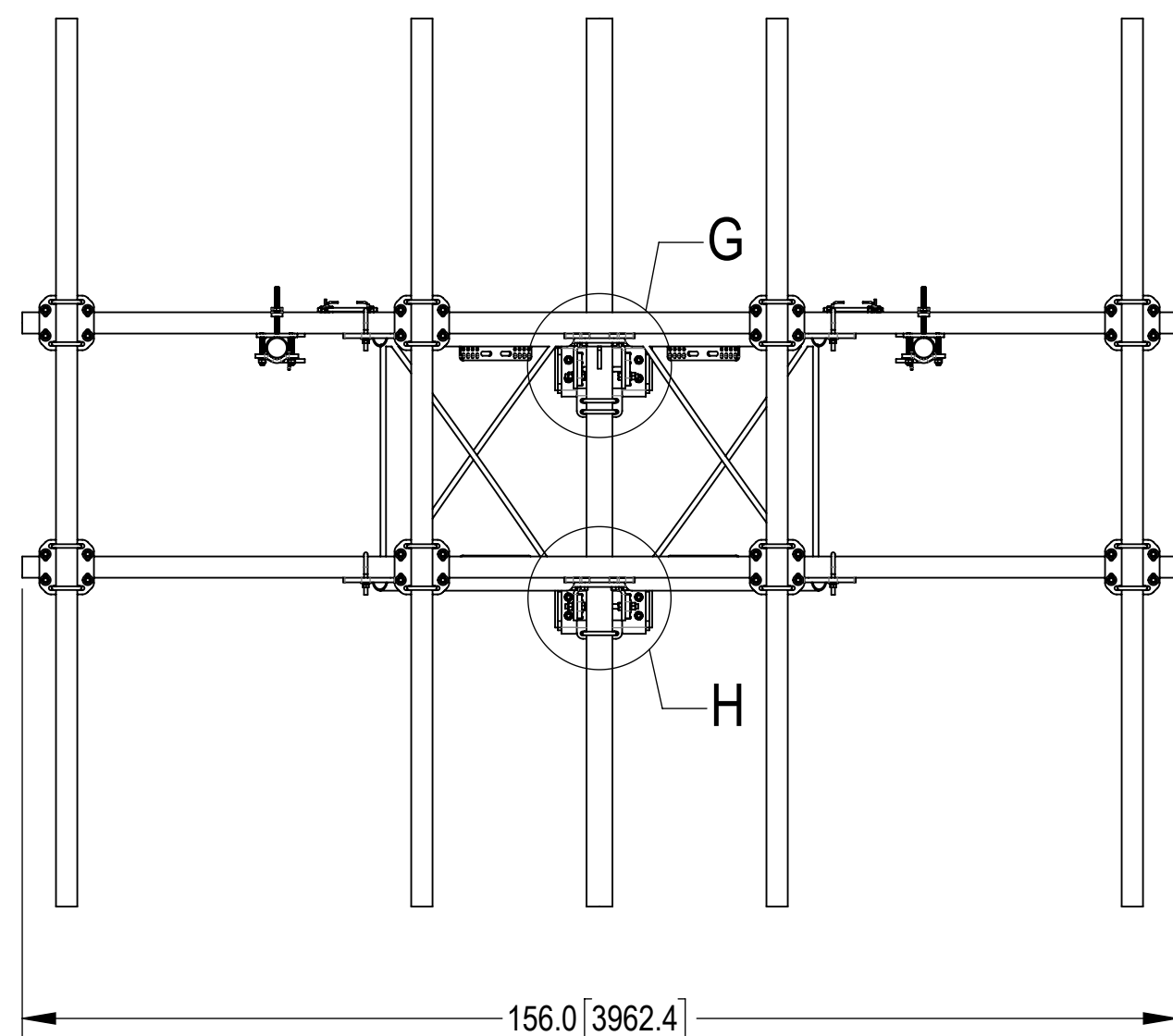
**ALLOWABLE TIEBACK ANGLE**  
 +15 DEGREES VERTICAL  
 ±25 DEGREES HORIZONTAL



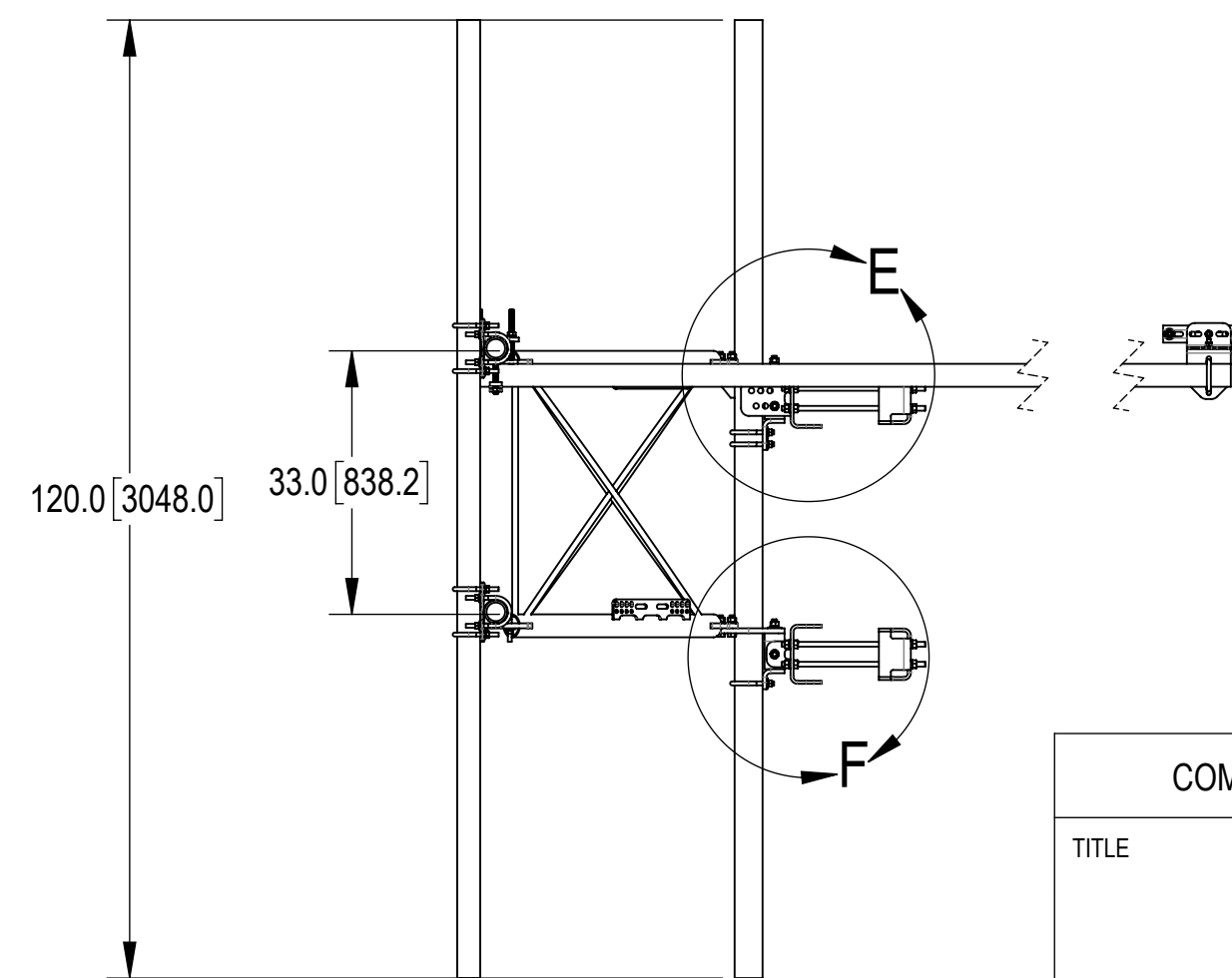
DETAIL D  
SCALE 1 : 6



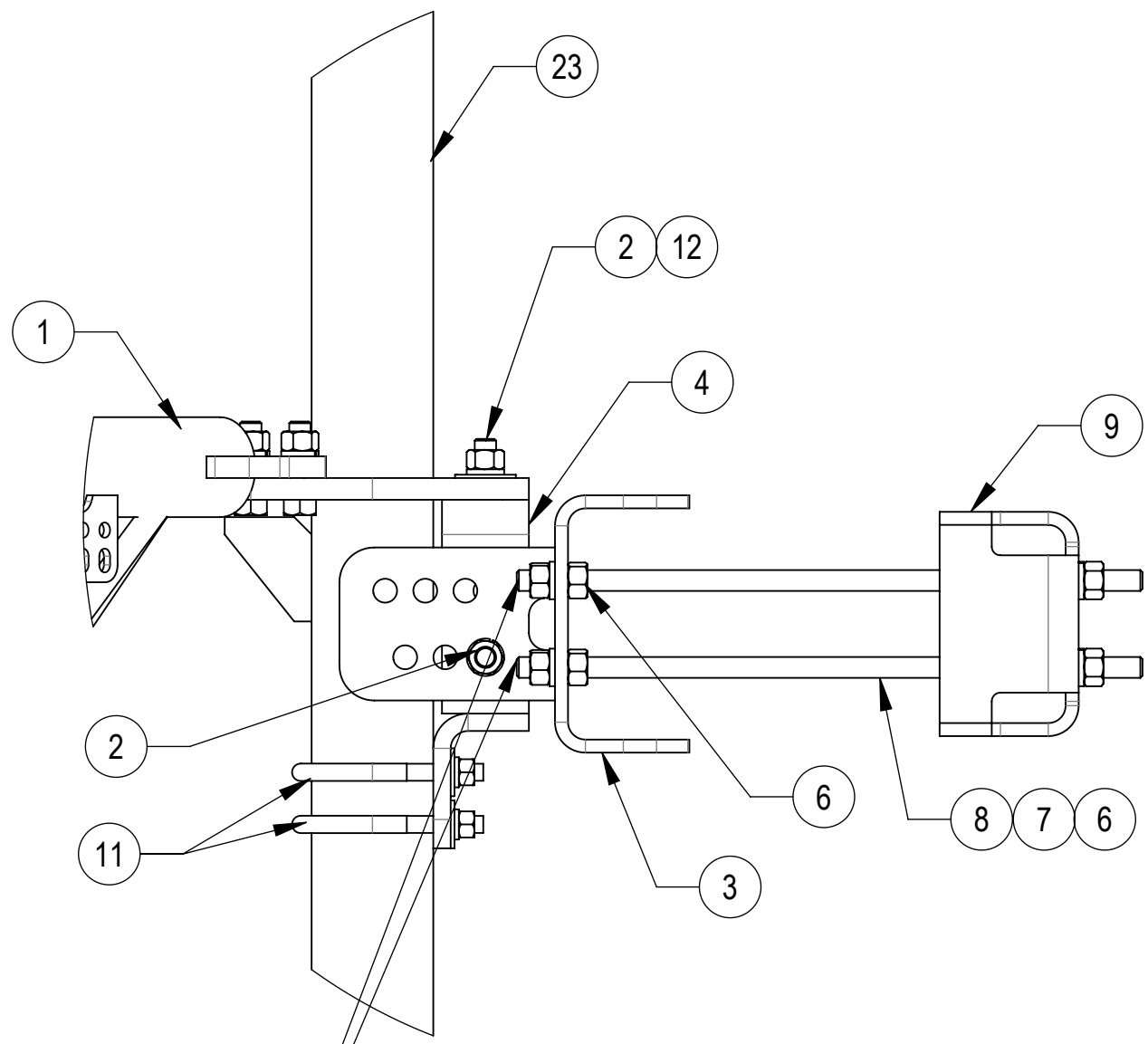
DETAIL C  
SCALE 1 : 4



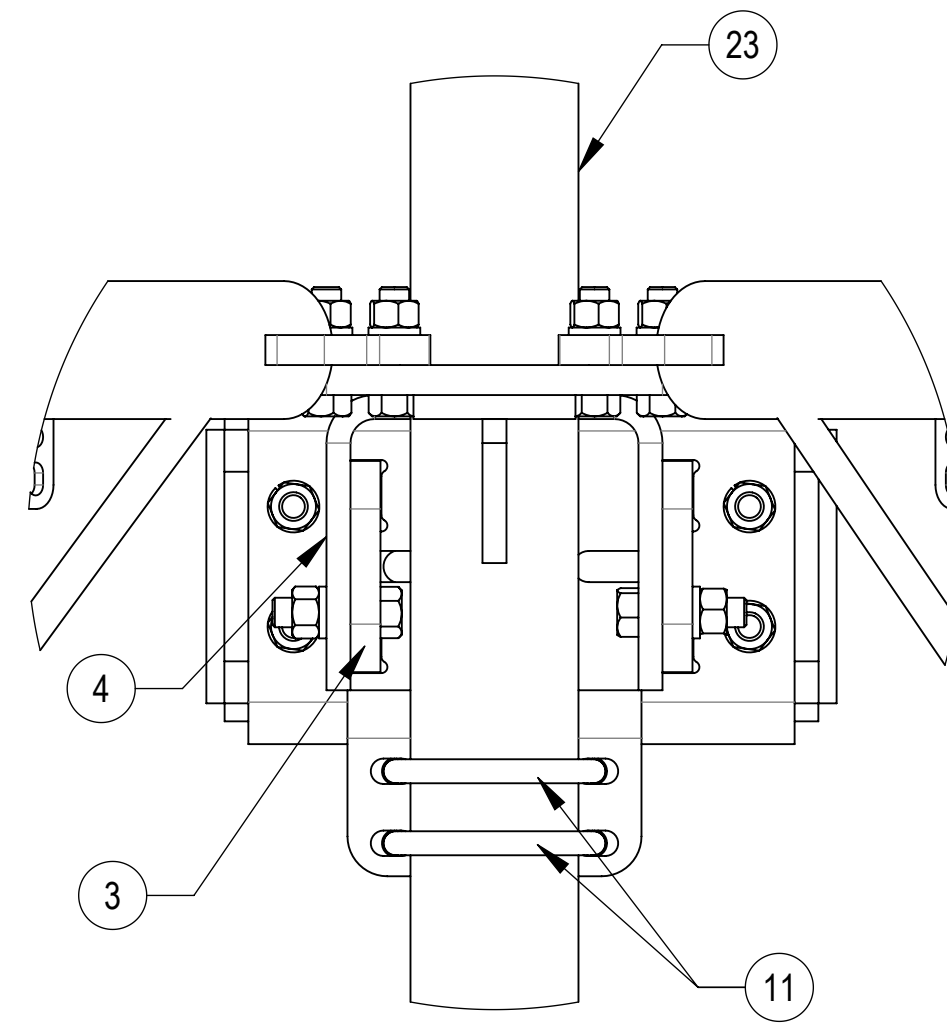
TOP  
↑  
↓  
BOTTOM



COMMSCOPE, INC. OF NORTH CAROLINA				
TITLE PG,SF,13'FP,(4)120"AP				
SIZE C	SCALE 1:22	DOCUMENT NO. SFG23RHDX-13-4-120		
		DRAWING		SHEET
		VERSION	STATUS	REVISION
		01	RE	B
				3 OF 7

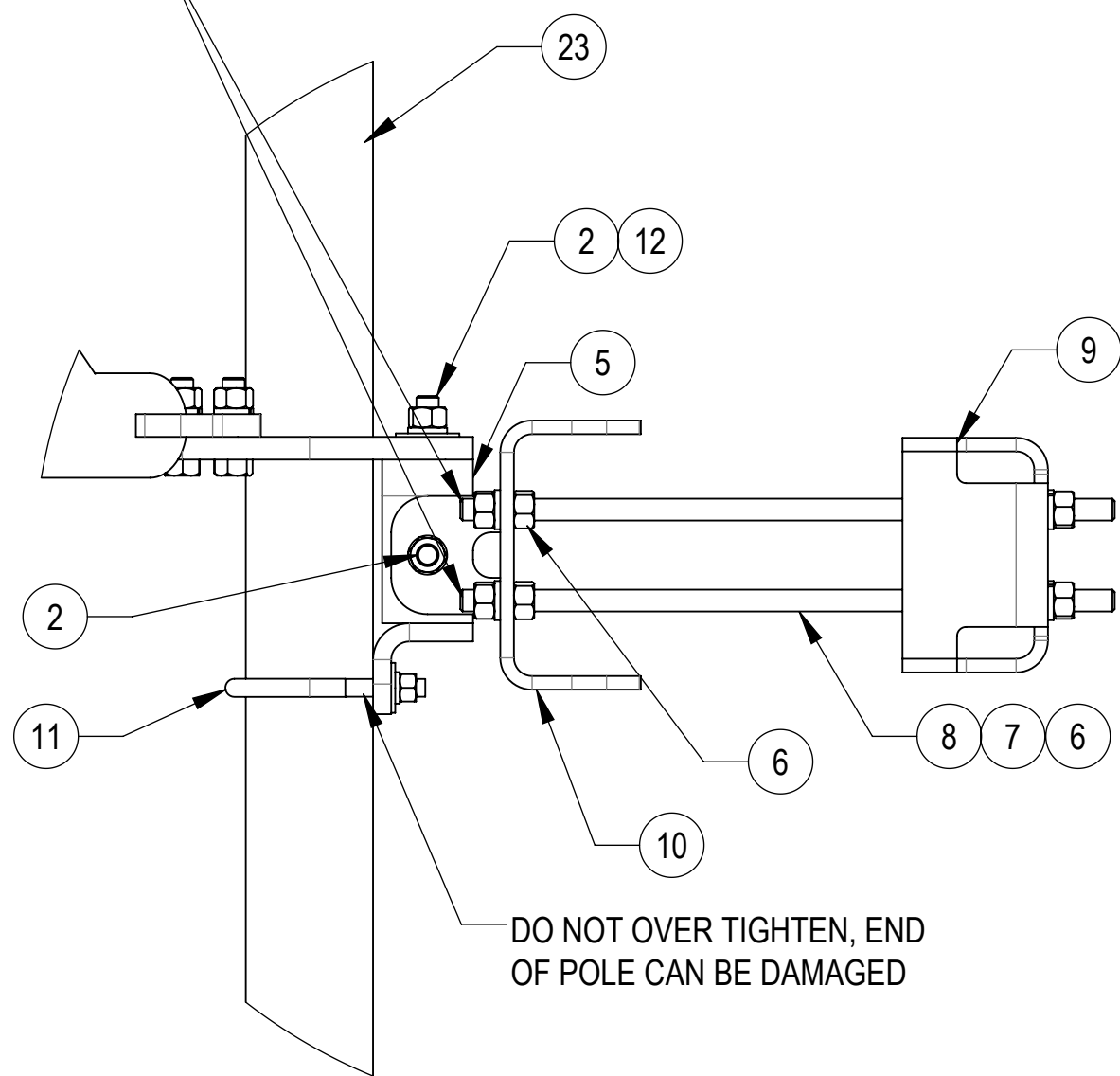


**DETAIL E**  
SCALE 1 : 5



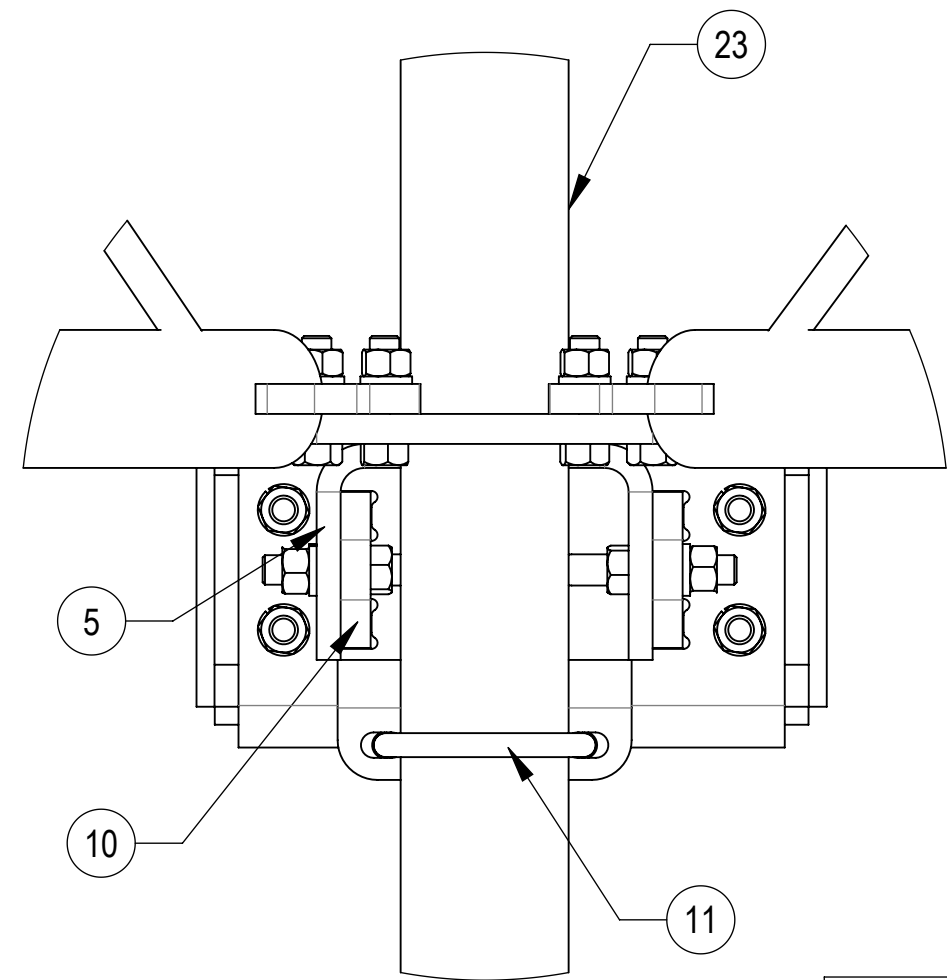
**DETAIL G**  
SCALE 1 : 4

THE THREADED ROD CAN ONLY EXPOSE 4 TO 7  
THREADS ON ONE SIDE OF THE BRACKET, WHICH IS  
TO PREVENT INTERFERENCE WITH THE SIDE BOLTS



**DETAIL F**  
SCALE 1 : 5

DO NOT OVER TIGHTEN, END  
OF POLE CAN BE DAMAGED



**DETAIL H**  
SCALE 1 : 4

COMMSCOPE, INC. OF NORTH CAROLINA				
TITLE PG,SF,13'FP,(4)120"AP				
SIZE <b>C</b>	SCALE <b>1:22</b>	DOCUMENT NO. SFG23RHDx-13-4-120		
		DRAWING		SHEET
		VERSION	STATUS	REVISION
		01	RE	B
				4 OF 7

4

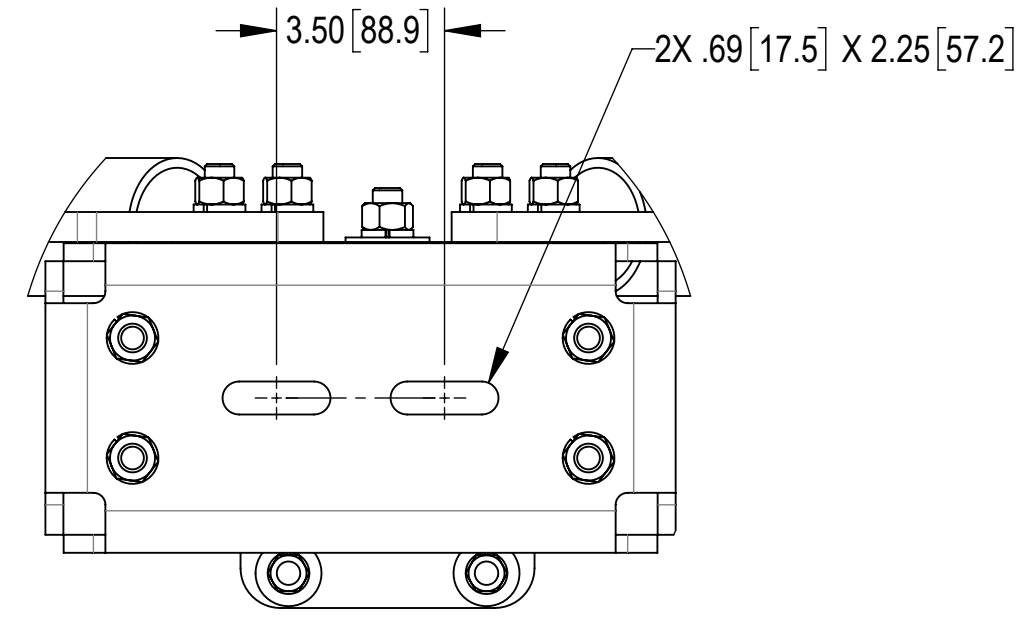
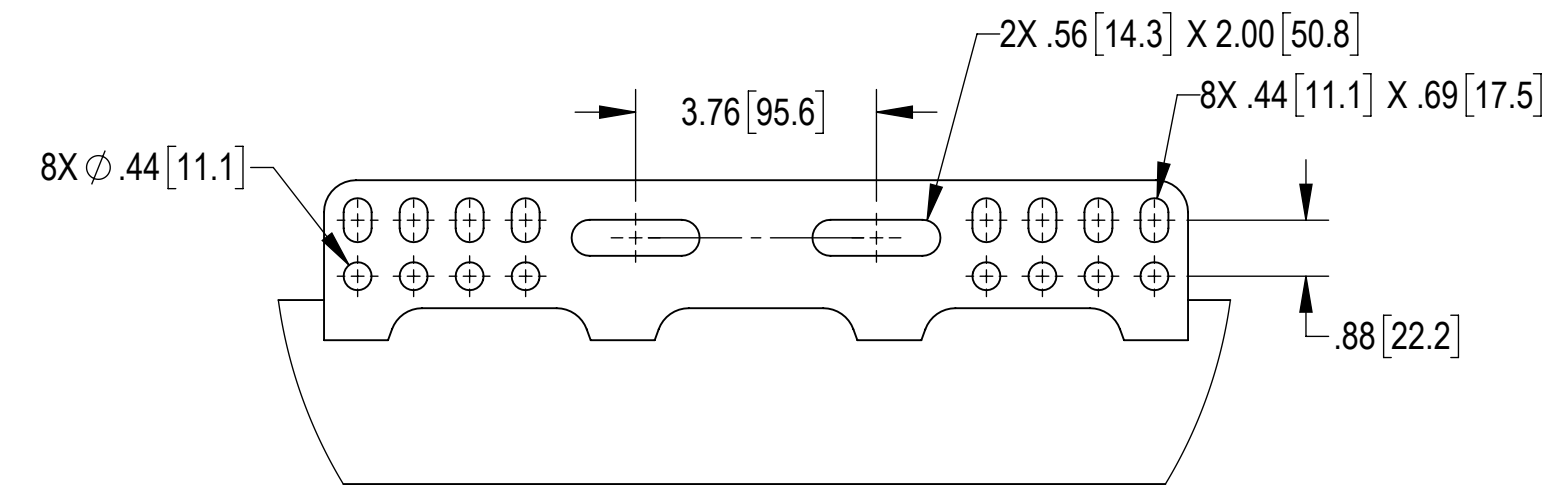
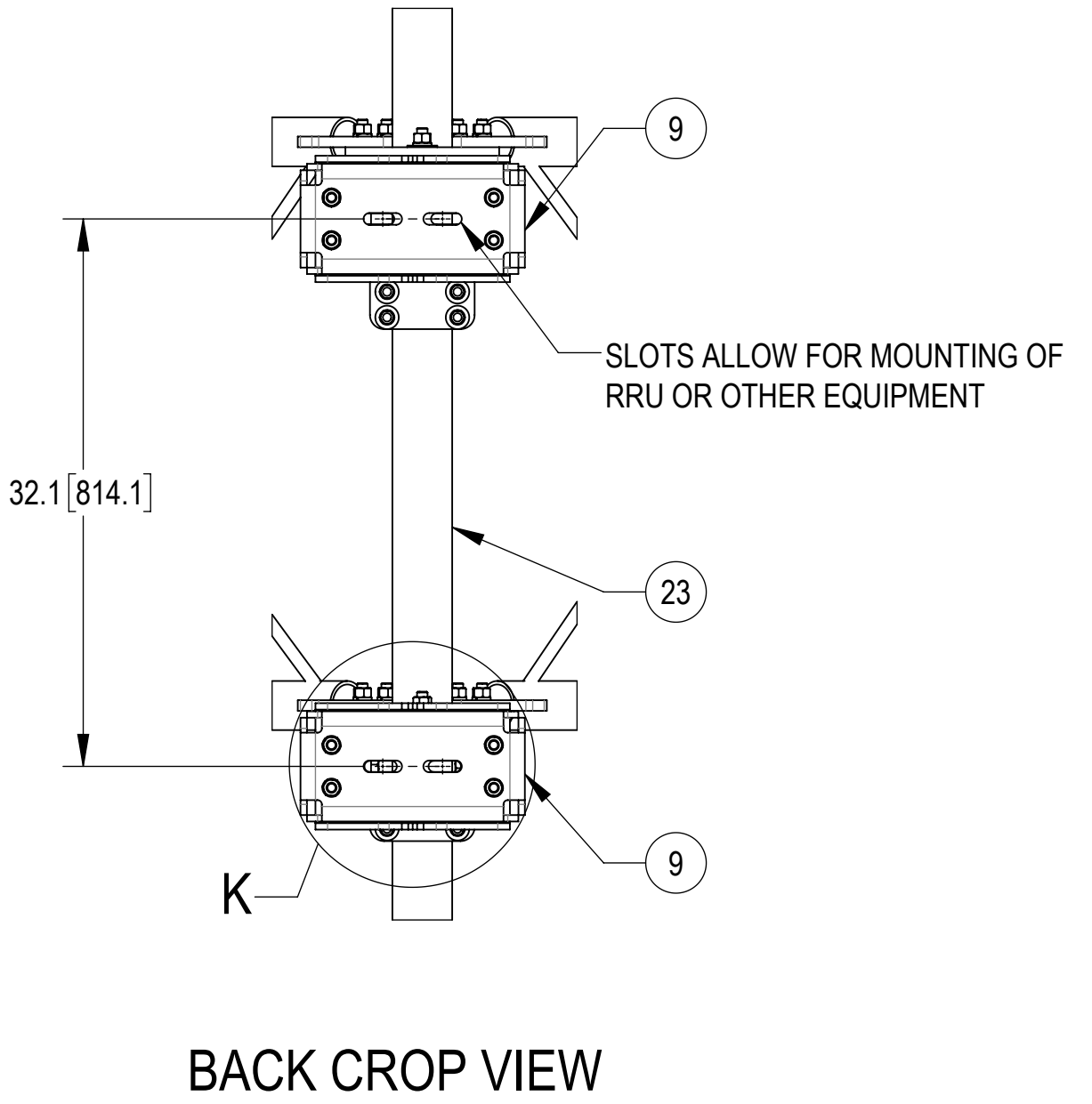
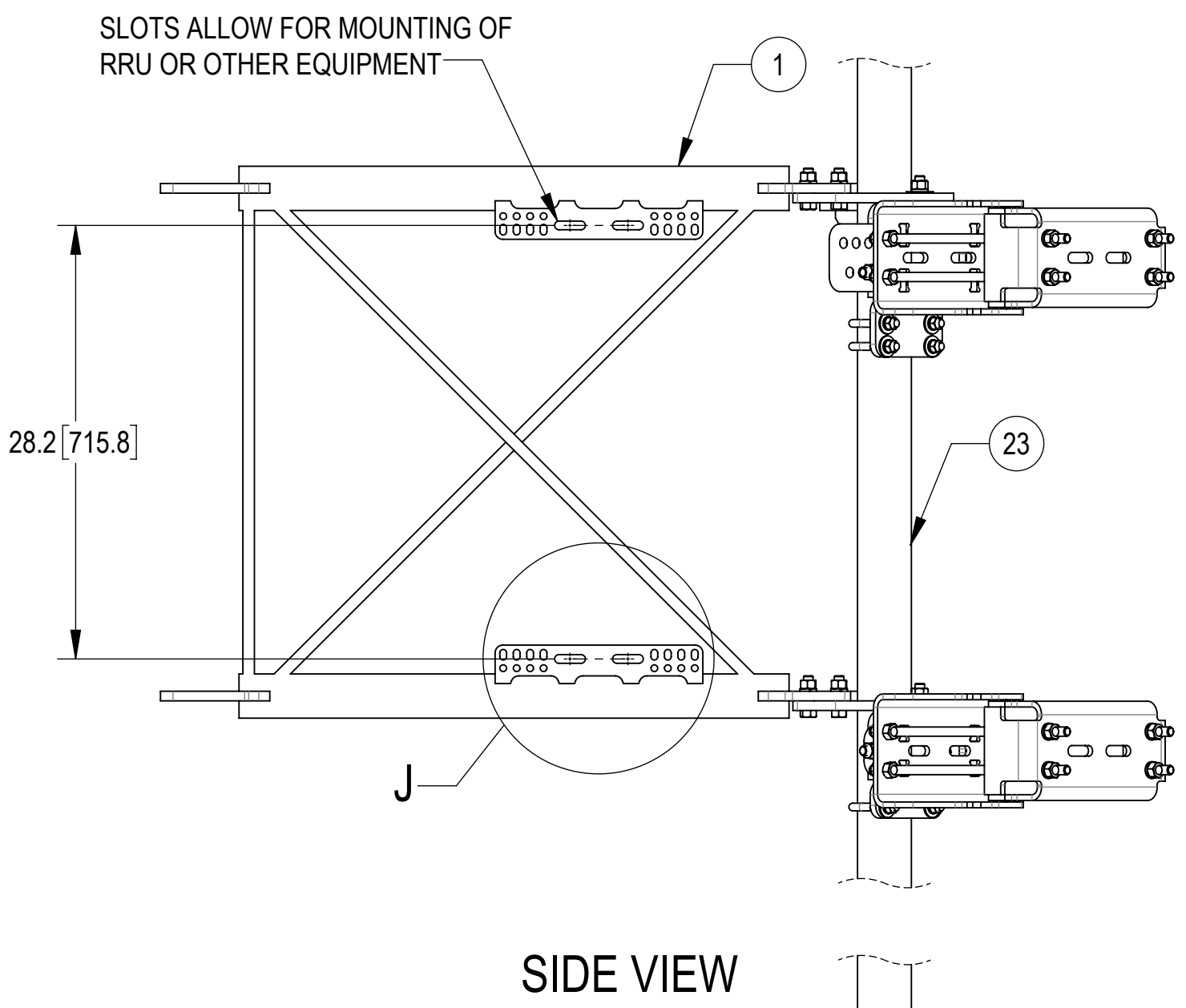
3

2

1

D

D



B

B

A

A

COMMSCOPE, INC. OF NORTH CAROLINA				
TITLE PG,SF,13'FP,(4)120"AP				
SIZE C	SCALE 1:10	DOCUMENT NO. SFG23RHDX-13-4-120		
		DRAWING		SHEET
		VERSION 01	STATUS RE	REVISION B

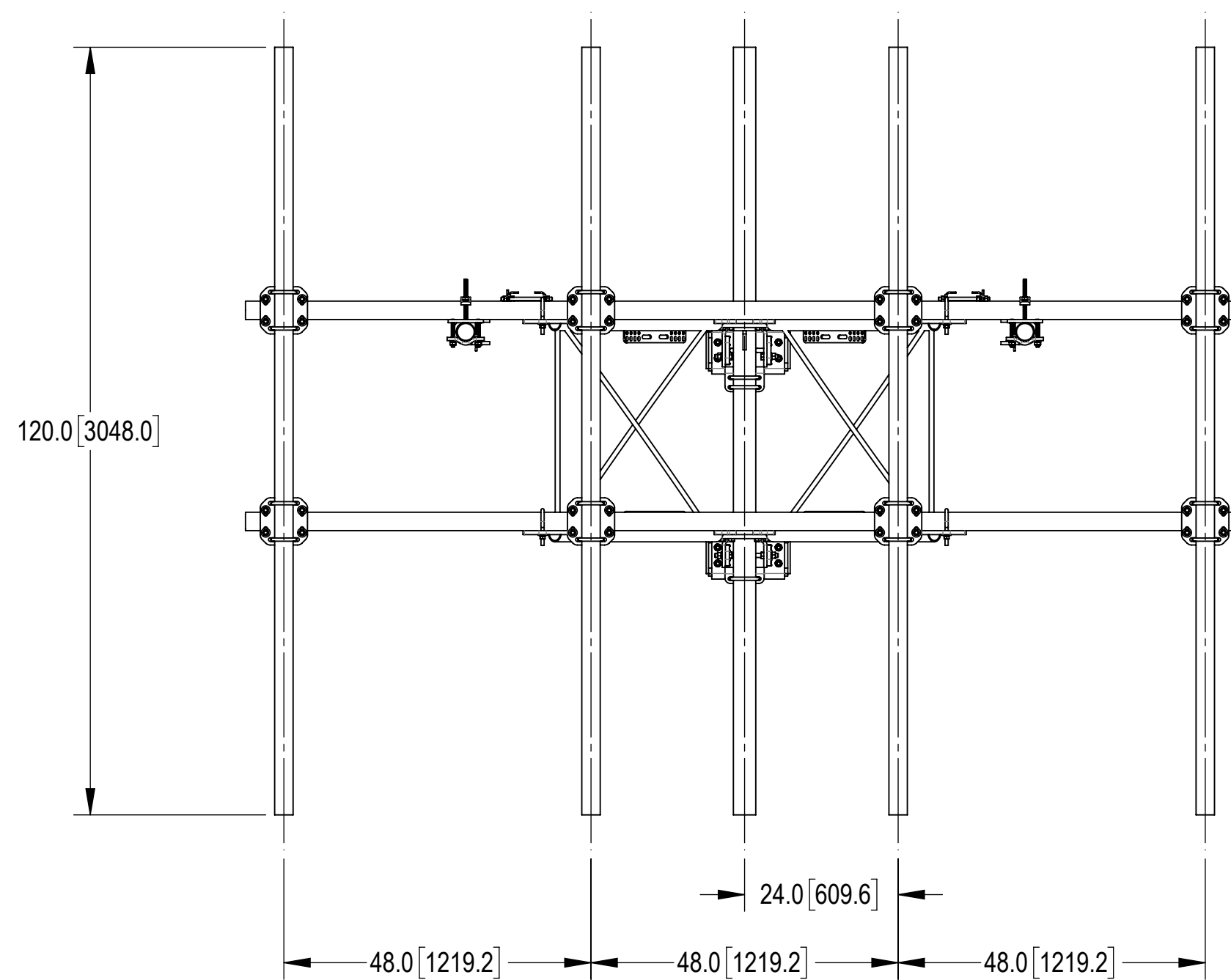
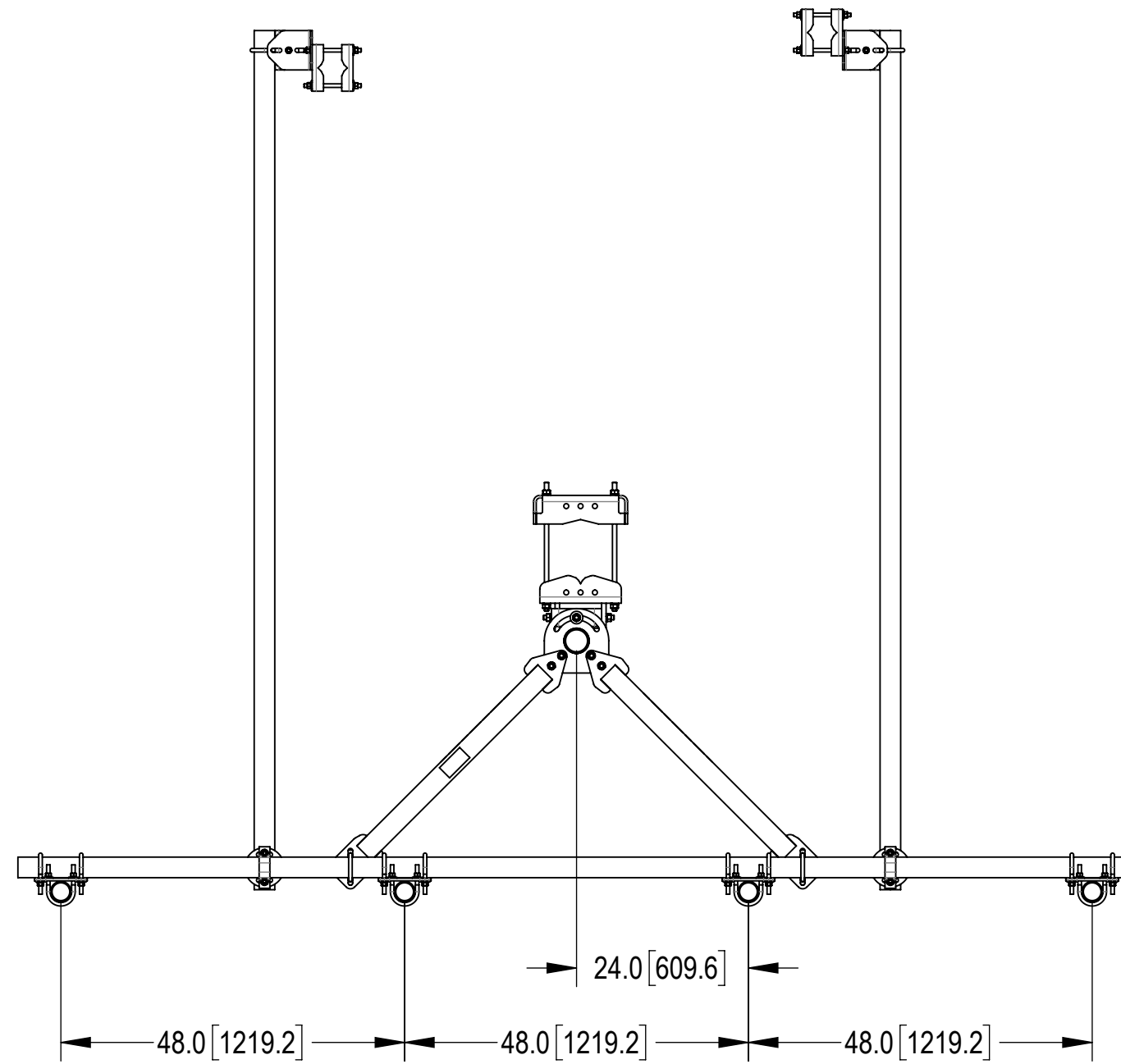
4

3

2

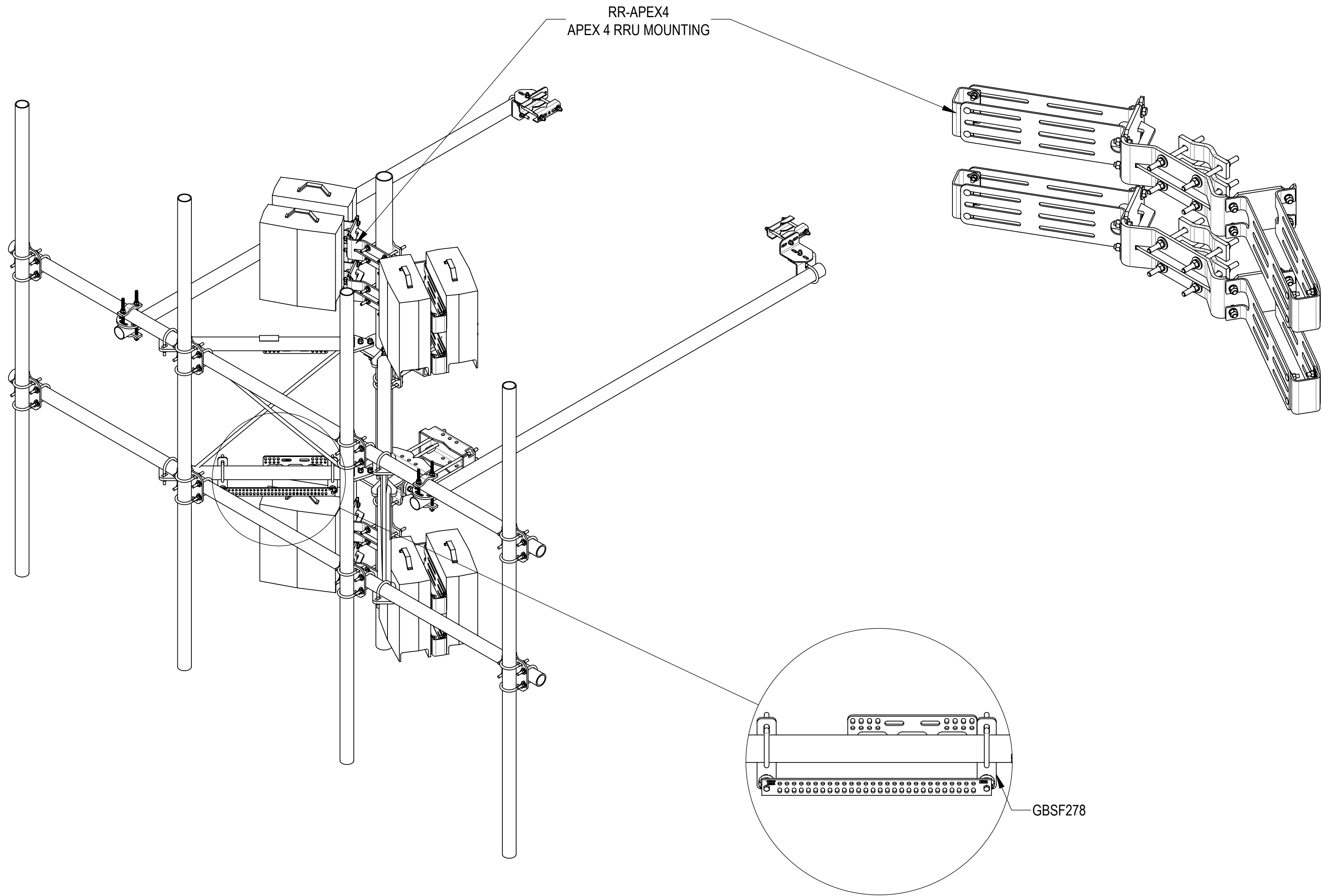
1

# ANTENNA SPACING SHOWN


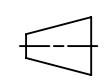


COMMSCOPE, INC. OF NORTH CAROLINA				
TITLE PG,SF,13'FP,(4)120"AP				
SIZE <b>C</b>	SCALE <b>1:20</b>	DOCUMENT NO. SFG23RHDX-13-4-120		
		DRAWING		SHEET
		VERSION	STATUS	REVISION
		01	RE	B
				6 OF 7

ACCESSORIES ORDERED SEPARATELY:



DETAIL L  
SCALE 1 : 8

COMMSCOPE, INC. OF NORTH CAROLINA				
TITLE PG,SF,13'FP,(4)120"AP				
SIZE <b>C</b>	SCALE <b>1:14</b>	DOCUMENT NO. SFG23RHDX-13-4-120		
 		DRAWING		SHEET
		VERSION 01	STATUS RE	REVISION B