

4

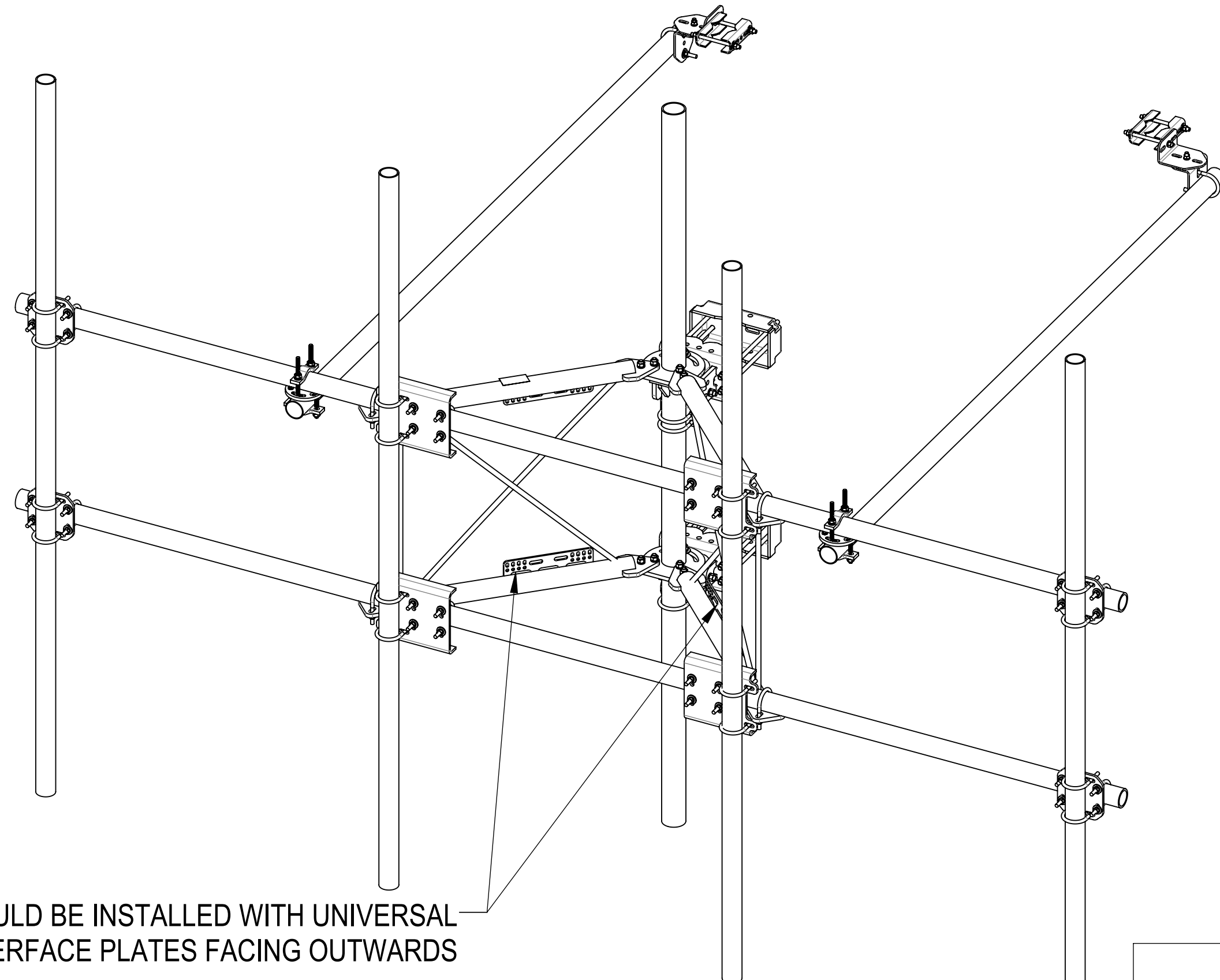
3

2

1

- 1.0 GENERAL NOTES
  - 1.1 ALL METRIC DIMENSIONS ARE IN BRACKETS [X.X]
  - 1.2 FOR PATENT INFO: <https://www.cs-pat.com>
- 2.0 DESIGN NOTES
  - 2.1 ANY HAZARDS OR OBSTRUCTIONS TO THE CLIMBING FACILITY AND SAFETY CLIMB MUST BE IDENTIFIED PRIOR TO INSTALLING THE APPURTENANCE. ADDITIONAL PRODUCTS MAY BE REQUIRED TO MAINTAIN THE INTEGRITY OF THE SAFETY CLIMB. DURING INSTALLATION, TEMPORARY AND/OR PERMANENT PRECAUTIONARY MEASURES SHOULD BE TAKEN TO PRESERVE THE CLIMBING FACILITY AND/OR SAFETY CLIMB.
  - 2.2 UP TO 5.0° TAPER AVAILABLE ON MODELS THAT SUPPORT ADJUSTMENT
- 3.0 MANUFACTURING/SPECIAL REQUIREMENTS
  - 3.1 TIGHTEN ALL BOLTS SECURING FLAT PLATES BY THE TURN-OF-NUT METHOD. TIGHTEN ALL U-BOLTS USING TURN-OF-NUT METHOD WITH ATTENTION TO LEAVE EQUAL DISTANCE AND EQUAL FORCE ON EACH LEG OF THE U-BOLT.
- 4.0 TEST
- 5.0 PACKAGING
  - 5.1 PACKAGING SHALL MEET COMMSCOPE REQUIREMENTS PER DOCUMENT IS-PL-3005.
  - 5.2 PRINTED DOCUMENT TO BE PLACED INSIDE POLYBAG AND THEN IN SHIPPING CONTAINER.
  - 5.3 EXTRA HARDWARE MAY BE SUPPLIED, BAGGED AND SHIPPED.

REVISIONS			
REV.	DESCRIPTION	DATE	APPROVED
A	INITIAL RELEASE	JL1183 24MAY24	CB1094 40196505CMO
B	UPDATED SFG23175 TO ADD UNIVERSAL INTERFACE PLATES	RY1002 02SEP24	XK1001 40202713CMO



SHOULD BE INSTALLED WITH UNIVERSAL  
INTERFACE PLATES FACING OUTWARDS

<b>COMMSCOPE, INC. OF NORTH CAROLINA</b>									
TOLERANCES		SAP MATERIAL MASTER							
1 PLACE .X[X] ± 0.2[6.3]	3 PLACE .XXX[X] ± 0.060[1.5]	<b>SFG23RHDX-15-4-120</b>							
2 PLACE .XX[X] ± 0.12[3.0]	ANGLES ± 2°								
FINISH		MATERIAL							
UNLESS OTHERWISE SPECIFIED DIMENSIONS ARE IN INCHES INTERPRET PER ANSI Y 14.5M-1994	NAME	DATE	<b>PG,SF,15'FP,(4)120"AP</b>						
	CE JL1183	24MAY24							
	RW RY1002	09/04/2024							
	AD XK1001	09/05/2024							
	RE RY1002	09/14/2024	SCALE	DOCUMENT NO.					
ECN 40202713CMO		<b>1:16</b>	<b>SFG23RHDX-15-4-120</b>						
SIZE	Auth Group	INSL	MODEL	DRAWING			SHEET		
C			VERSION	STATUS	REVISION	VERSION	STATUS	REVISION	1 OF 7
			01	RE	B	01	RE	B	

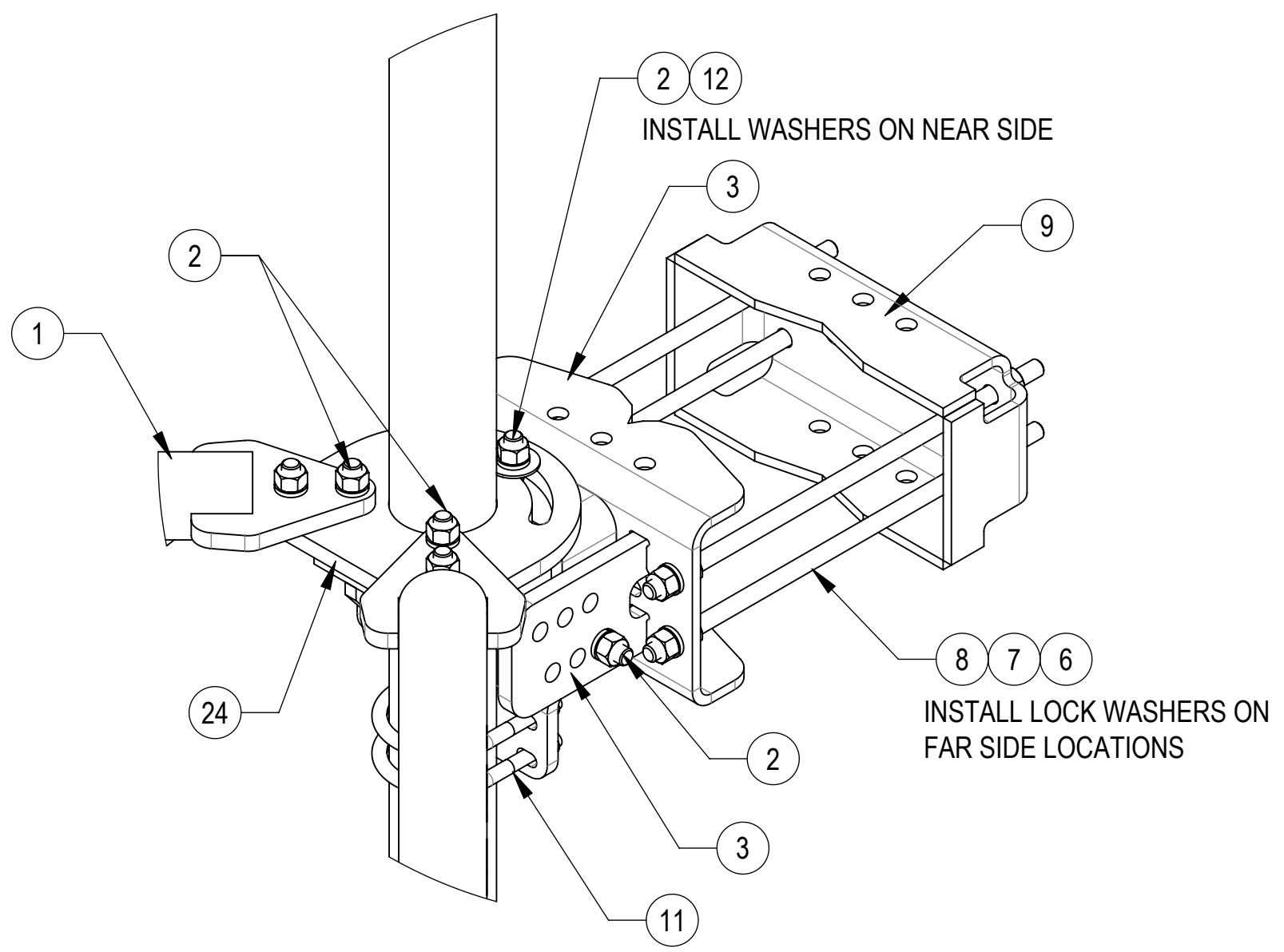
DENSITY		lbs/in <sup>3</sup>
MASS	1022.97	lbs
VOLUME	3607.67	in <sup>3</sup>
SURFACE AREA	31393.68	in <sup>2</sup>
HEIGHT	120"	
LENGTH	180"	
WIDTH	120"	

4

3

2

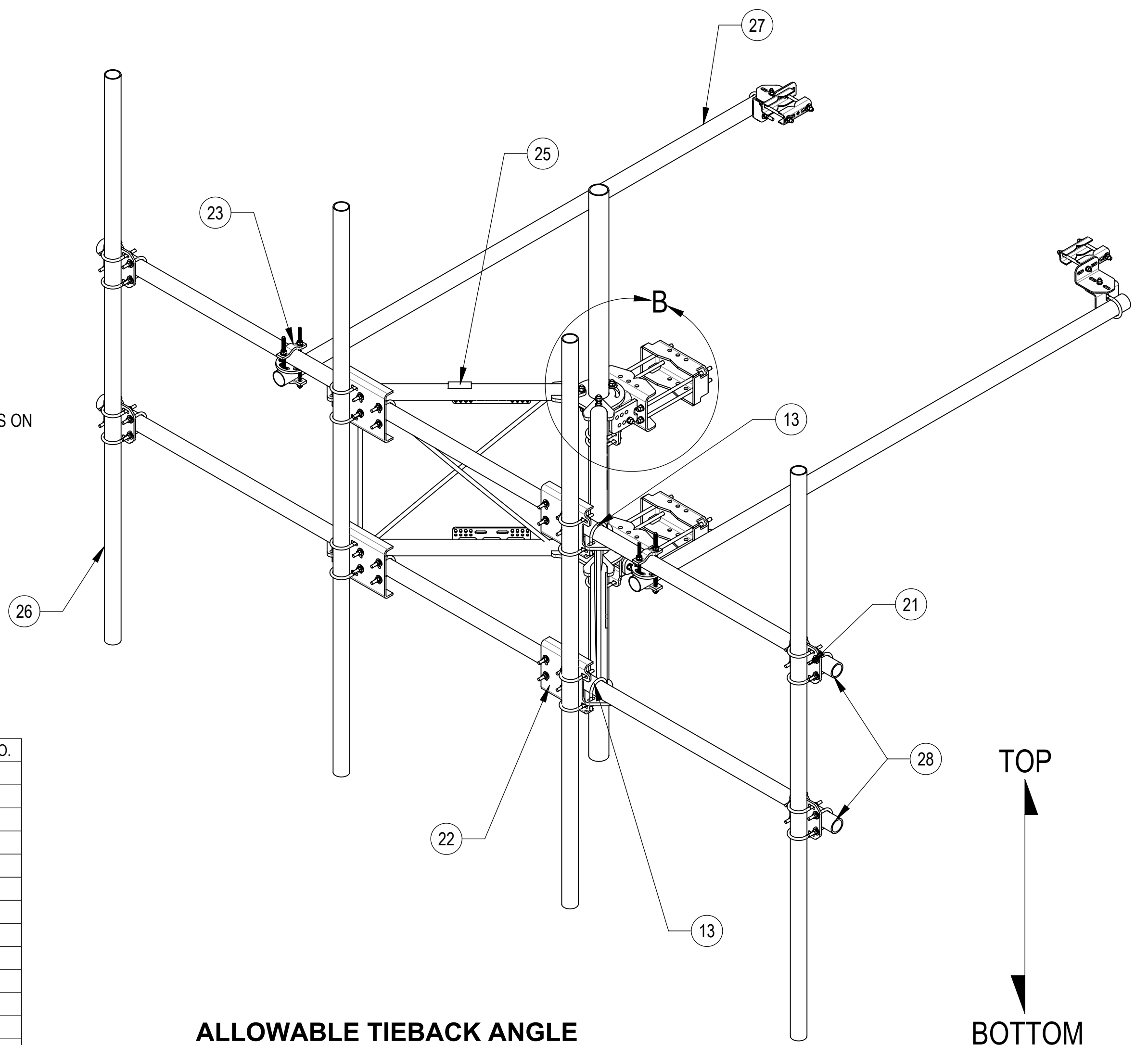
1



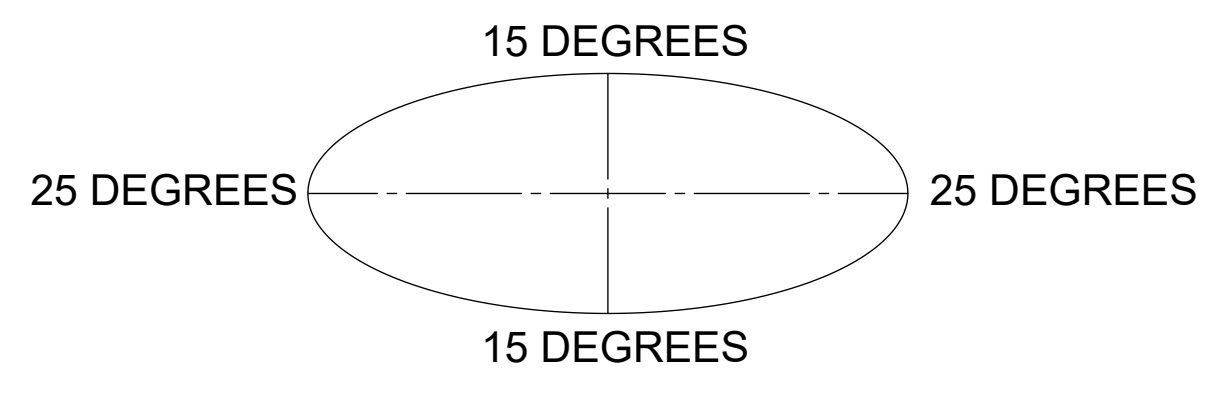
**DETAIL B**  
SCALE 1 : 5

COMPONENT PART NUMBERS PROVIDED FOR ASSEMBLY PURPOSES;  
INDIVIDUAL COMPONENTS MAY BE SHIPPED AS PARTS WITHIN AN INCLUDED KIT.

ITEM	PART NO.	DESCRIPTION	QTY.	WEIGHT	NOTE NO.
1	SFG23175	ARM STANDOFF SFG23	2	66.67 LBS	
2	GB-05225	5/8" X 2-1/4" GALV BOLT KIT	14	0.28 LBS	
3	SFG2380	WELDMENT, HD, TOP TAPER BRACKET	1	22.78 LBS	
4	SFG2386	WELDMENT, SFG2 AZIMUTH BRACKET	1	10.07 LBS	
5	SFG2397-00	WELDMENT, G23 AZIMUTH BRACKET	1	7.94 LBS	
6	GN-05	5/8" GALV HEX NUT	24	0.08 LBS	
7	GWL-05	5/8" GALV LOCK WASHER	16	0.03 LBS	
8	MT-382-18	5/8" X 18" THREADED ROD	8	1.43 LBS	
9	SFG2289	G2 RRU BACK CLAMP, HD	2	18.65 LBS	
10	SFG2381	WELDMENT, HD, LOWER TOWER LEG BRACKET	1	17.42 LBS	
11	GUB-4355	1/2" X 3-5/8" X 5" GALV U-BOLT	3	0.71 LBS	
12	GWF-05	5/8" GALV FLAT WASHER, 1.7OD	2	0.06 LBS	
13	GUB-4352	1/2" X 3" X 5-1/4" GALV U-BOLT	6	0.71 LBS	
14	SAB01	FORMED CLAMP	4	1.35 LBS	
15	MT-379-8	1/2" X 8" GALV THREADED ROD	4	0.45 LBS	
16	XAU01	ANGLE, CROSSOVER, 1.9-3.5" X 1.9-3.5" OD	4	2.98 LBS	
17	GB-04145	1/2" X 1-1/2" GALV BOLT KIT	2	0.13 LBS	
18	GWF-04	1/2" GALV FLAT WASHER	8	0.04 LBS	
19	GWL-04	1/2" GALV LOCK WASHER	10	0.01 LBS	
20	GN-04	1/2" GALV HEX NUT	10	0.04 LBS	
21	XP-2525	CROSSOVER PLATE KIT, 2-7/8 OD X 2-7/8 OD	4	8.37 LBS	
22	XP-2525-OFF	OFFSET CO PLATE KIT, 2-7/8ODX2-7/8OD	4	17.91 LBS	
23	XP-R	CROSSOVER PLATE, ROUND, UP TO 3.5" OD	2	6.20 LBS	
24	SFG2204	WELDMENT, BACK VERTICAL ARM MOUNT	1	97.29 LBS	
25	SFG2398	LABEL, SFG23RHD	1	0.04 LBS	
26	MT546120	PIPE, 2.875"OD X 120"	4	57.45 LBS	
27	MT546120120	PIPE, 2.875"OD X 120"	2	35.44 LBS	
28	MT546180276	PIPE, 2.875"OD X 180"	2	115.33 LBS	



**ALLOWABLE TIEBACK ANGLE**  
±15 DEGREES VERTICAL  
±25 DEGREES HORIZONTAL

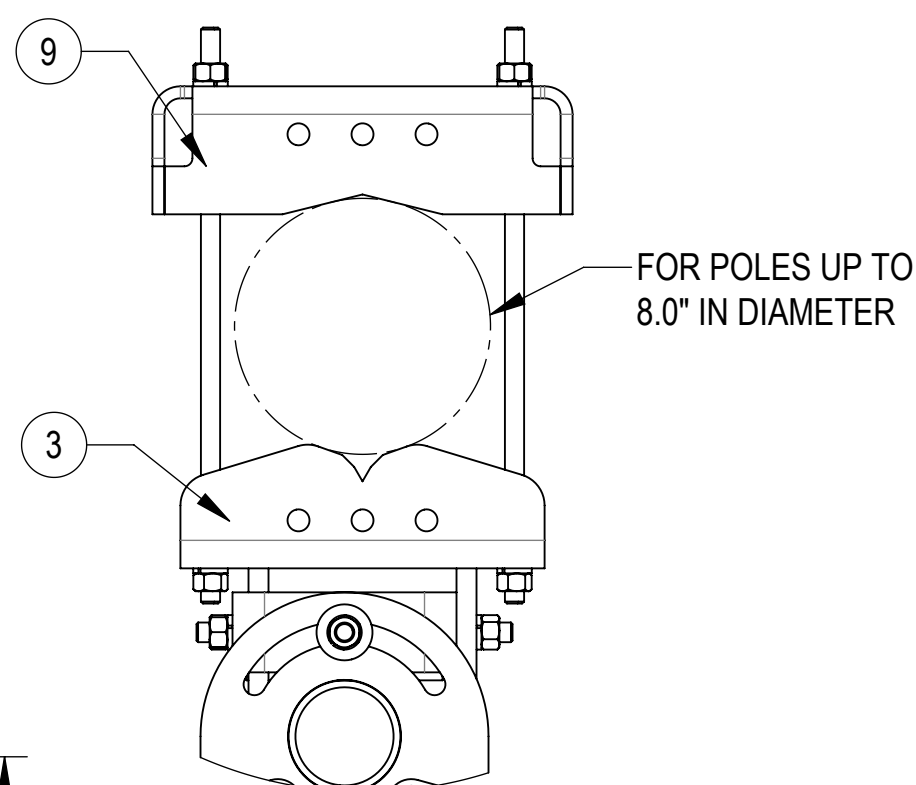
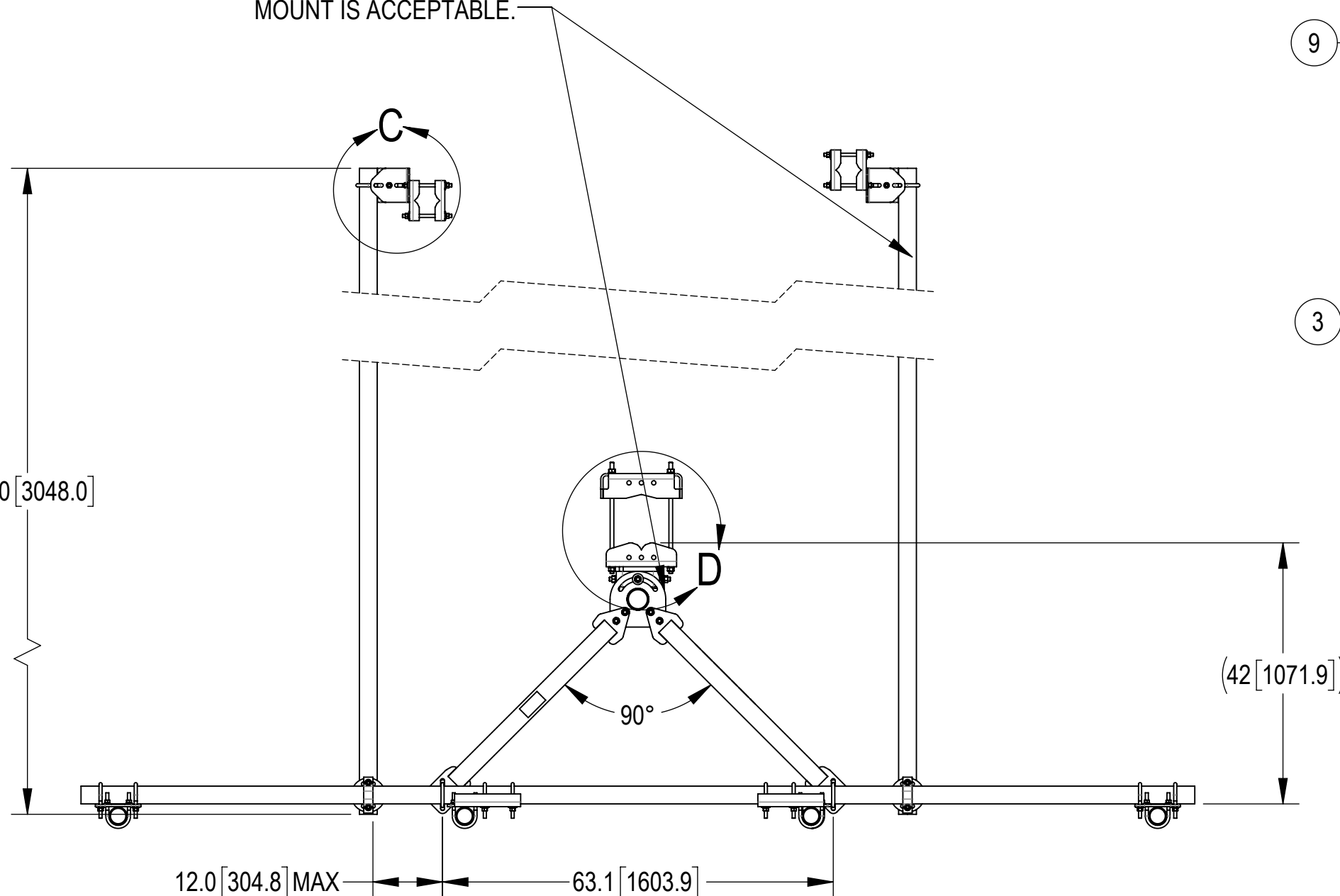
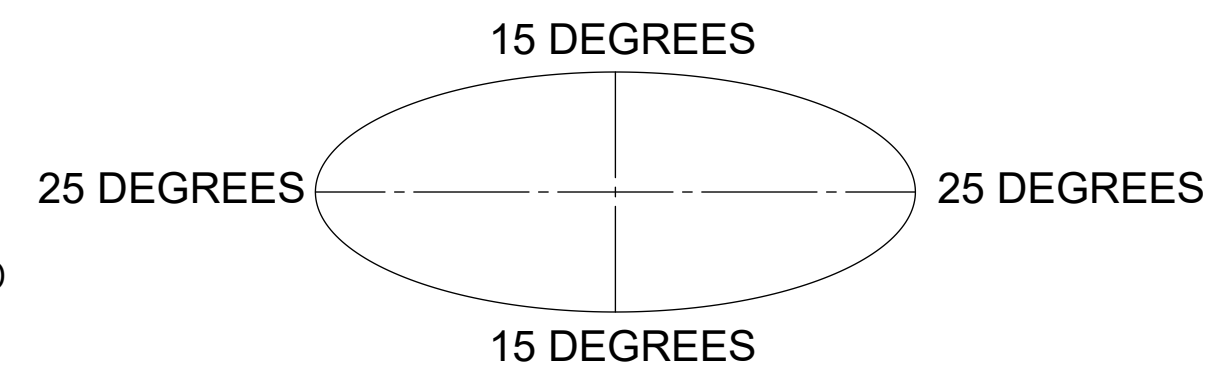


COMMSCOPE, INC. OF NORTH CAROLINA				
TITLE PG,SF,15'FP,(4)120"AP				
SIZE <b>C</b>	SCALE <b>1:32</b>	DOCUMENT NO. <b>SFG23RHD-15-4-120</b>		
DRAWING		VERSION	STATUS	REVISION
		01	RE	B
				SHEET 2 OF 7

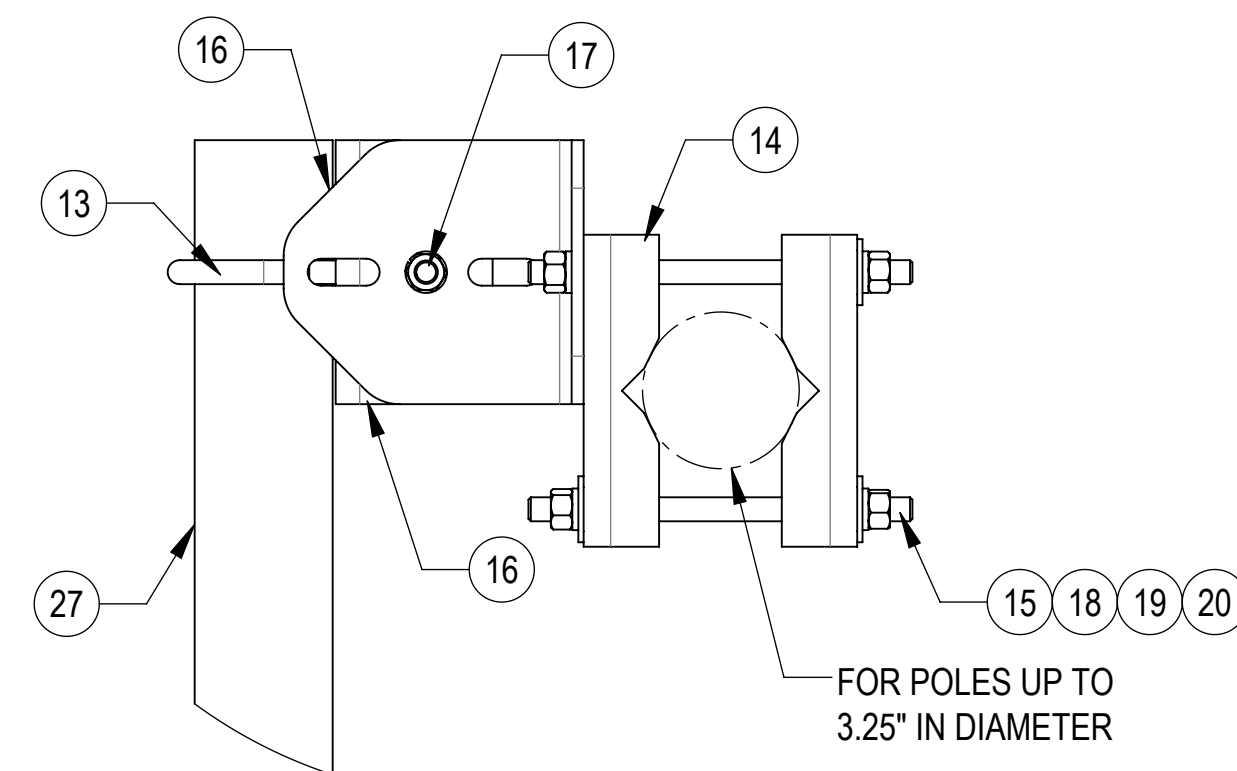
TIEBACK MUST BE CONNECTED TO A RIGID MEMBER THAT PROVIDES ADEQUATE SUPPORT WITHIN THE LIMITS NOTED IN THE TIEBACK ANGLE RANGE DETAIL. UNLESS APPROVED BY ENGINEER OF RECORD, SPINE STEM OF NEIGHBORING MOUNT IS ACCEPTABLE.

### ALLOWABLE TIEBACK ANGLE

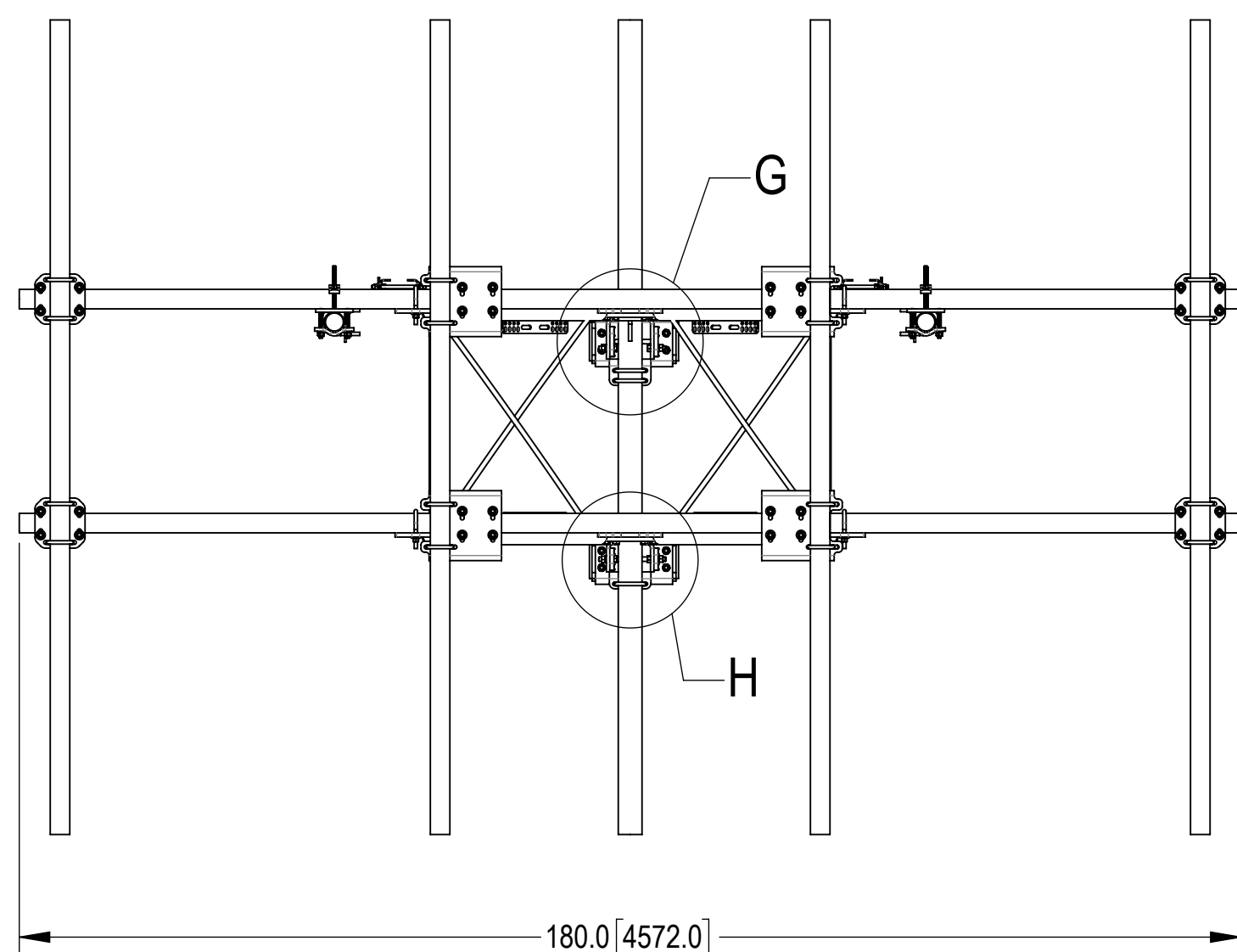
± 15 DEGREES VERTICAL  
± 25 DEGREES HORIZONTAL



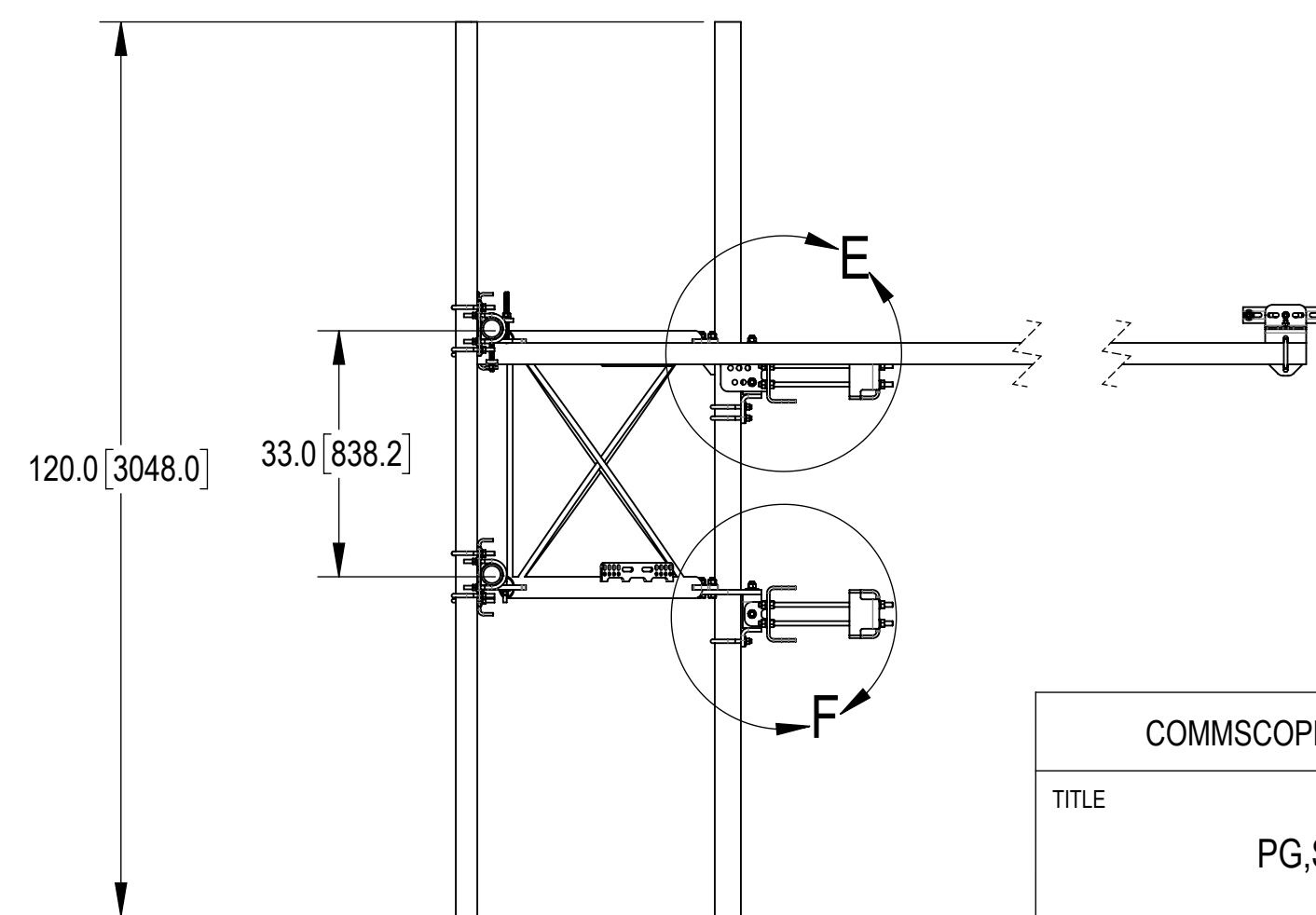
DETAIL D  
SCALE 1 : 6



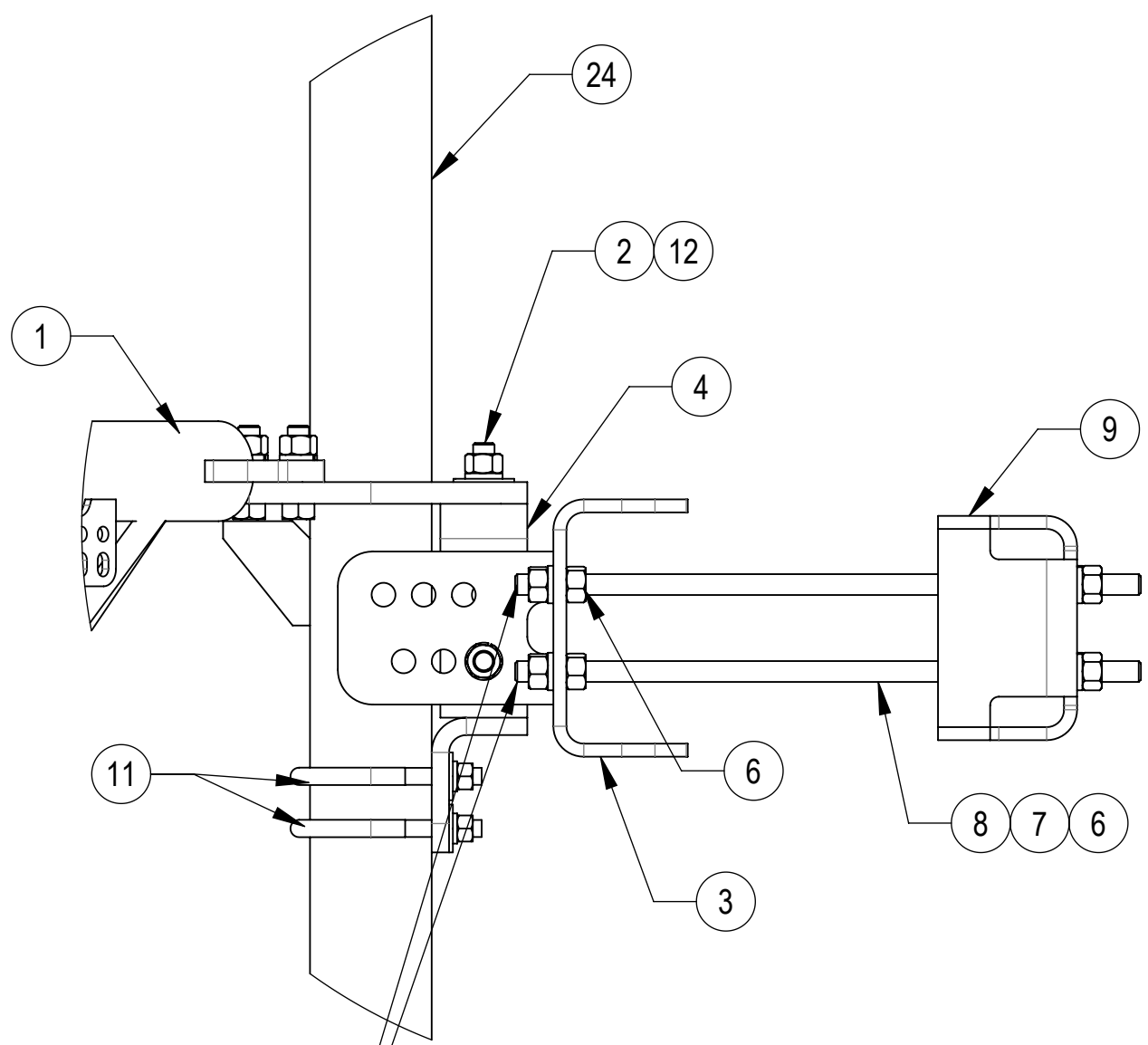
DETAIL C  
SCALE 1 : 4



TOP  
↓  
BOTTOM

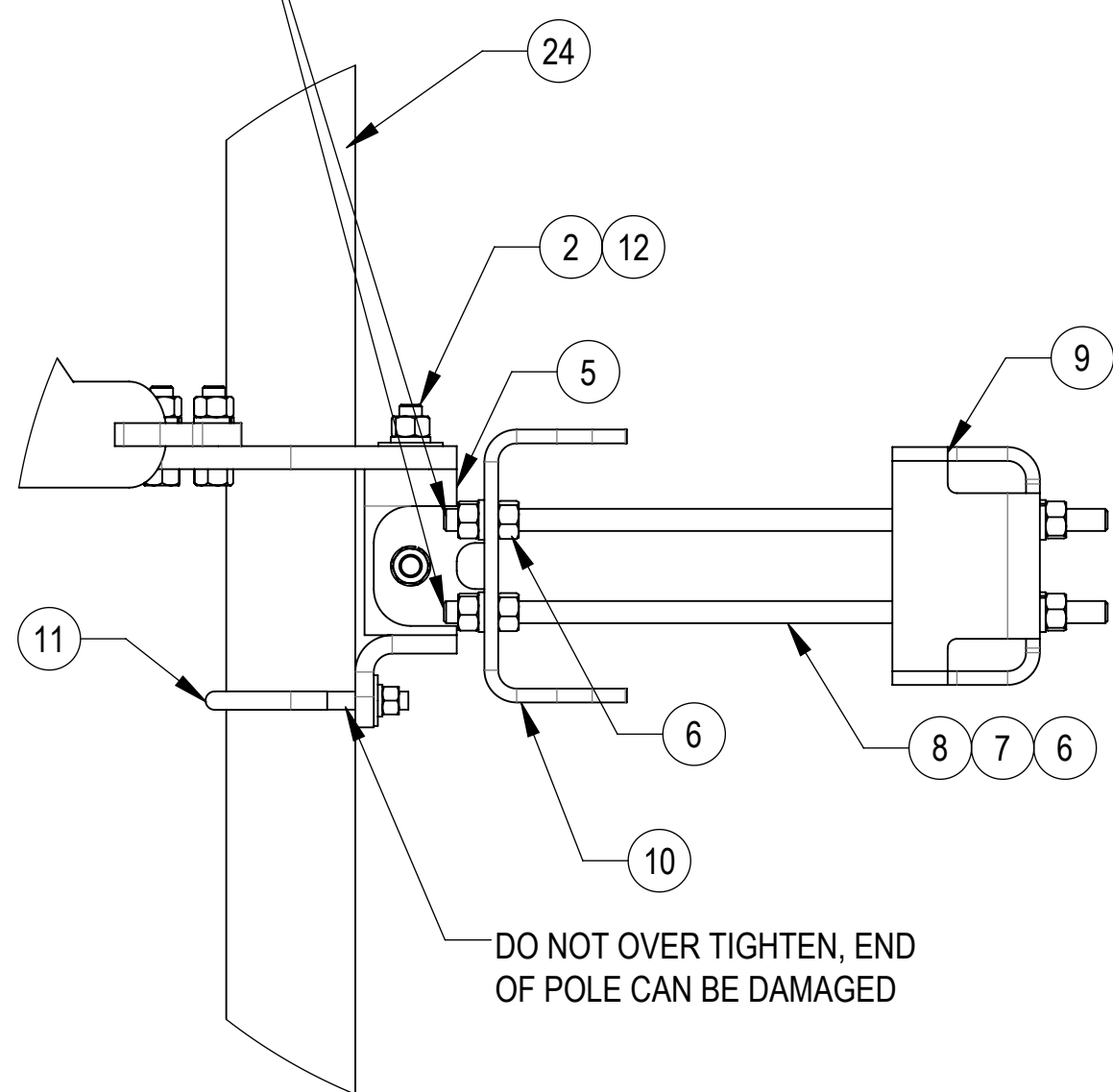


COMMSCOPE, INC. OF NORTH CAROLINA				
TITLE PG,SF,15'FP,(4)120"AP				
SIZE C	SCALE 1:22	DOCUMENT NO. SFG23RHDX-15-4-120		
		DRAWING		SHEET
		VERSION	STATUS	REVISION
		01	RE	B
				SHEET 3 OF 7



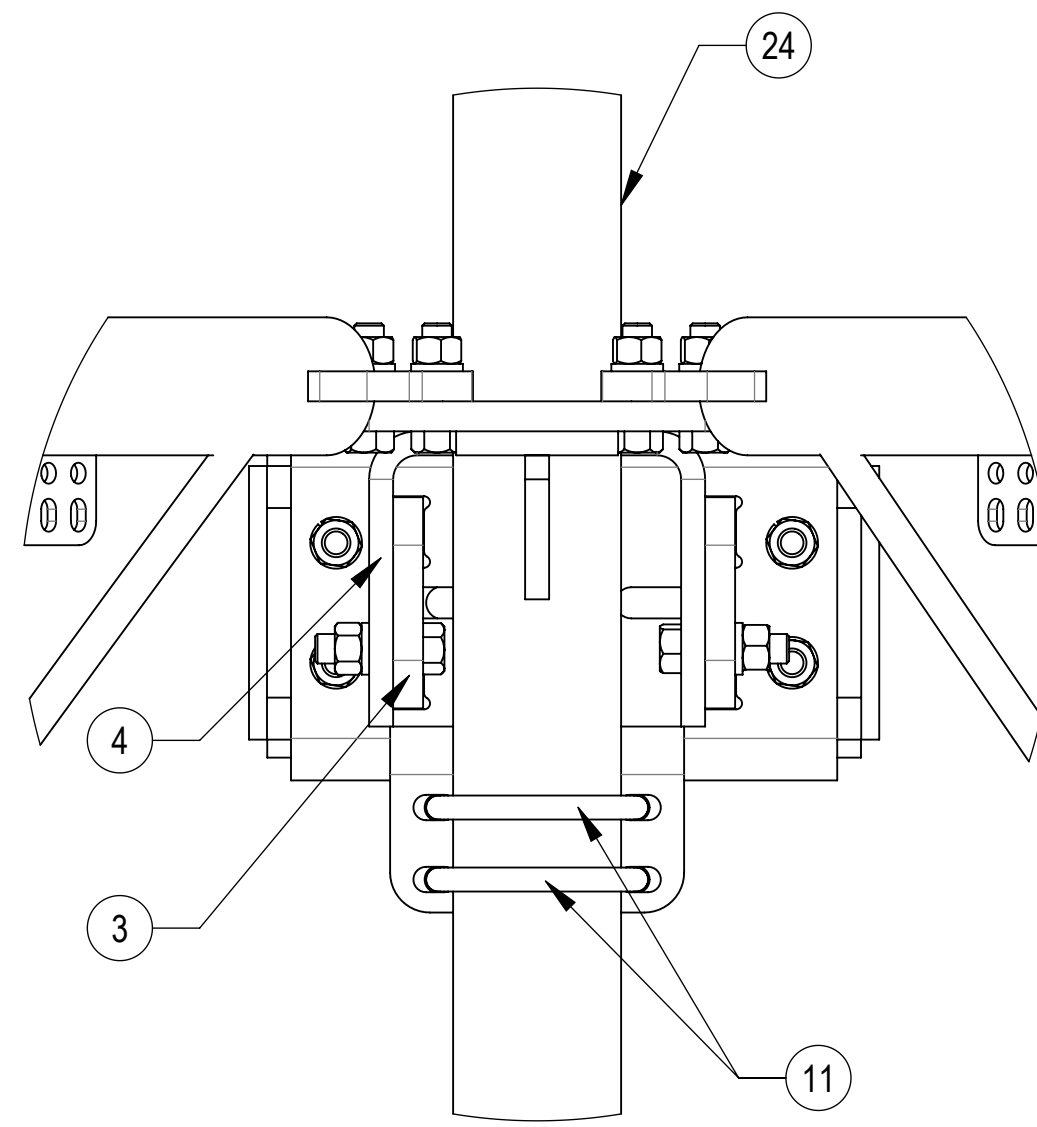
**DETAIL E**  
SCALE 1 : 5

THE THREADED ROD CAN ONLY EXPOSE 4 TO 7  
THREADS ON ONE SIDE OF THE BRACKET, WHICH IS  
TO PREVENT INTERFERENCE WITH THE SIDE BOLTS

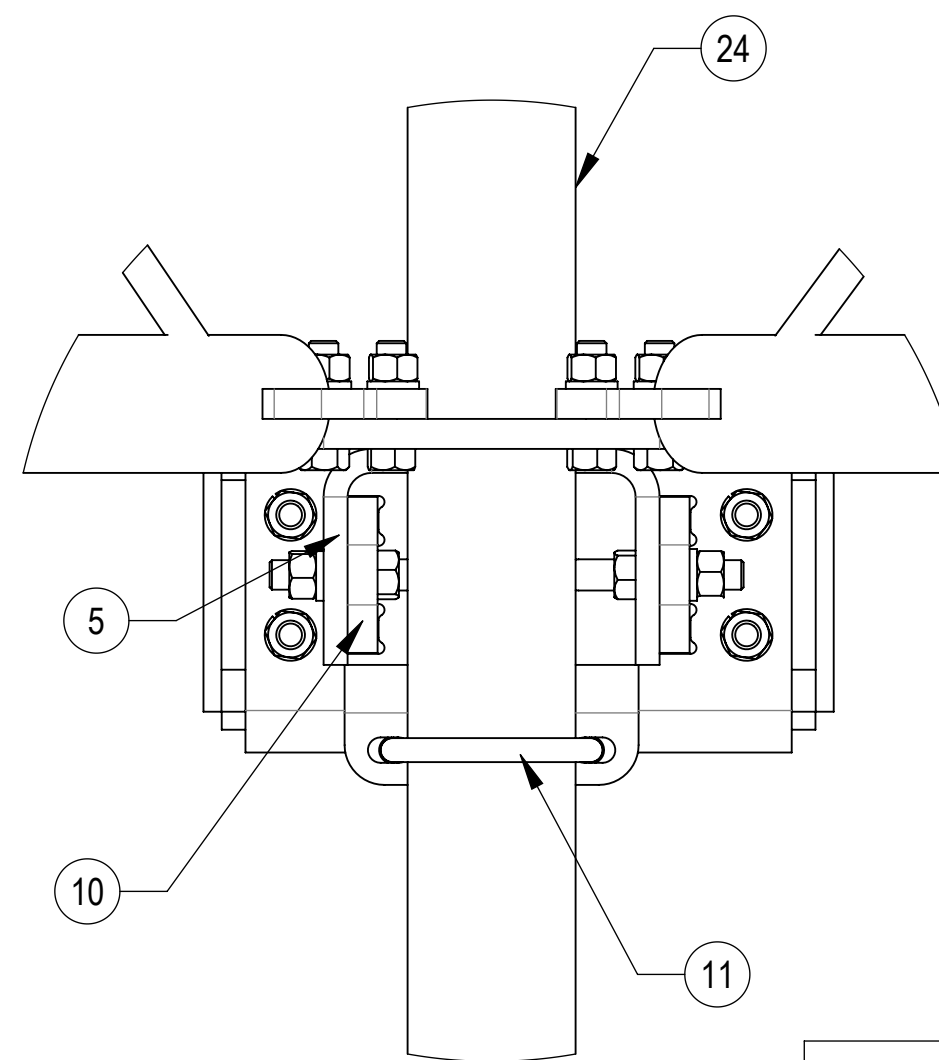


**DETAIL F**  
SCALE 1 : 5

DO NOT OVER TIGHTEN, END  
OF POLE CAN BE DAMAGED



**DETAIL G**  
SCALE 1 : 4



**DETAIL H**  
SCALE 1 : 4

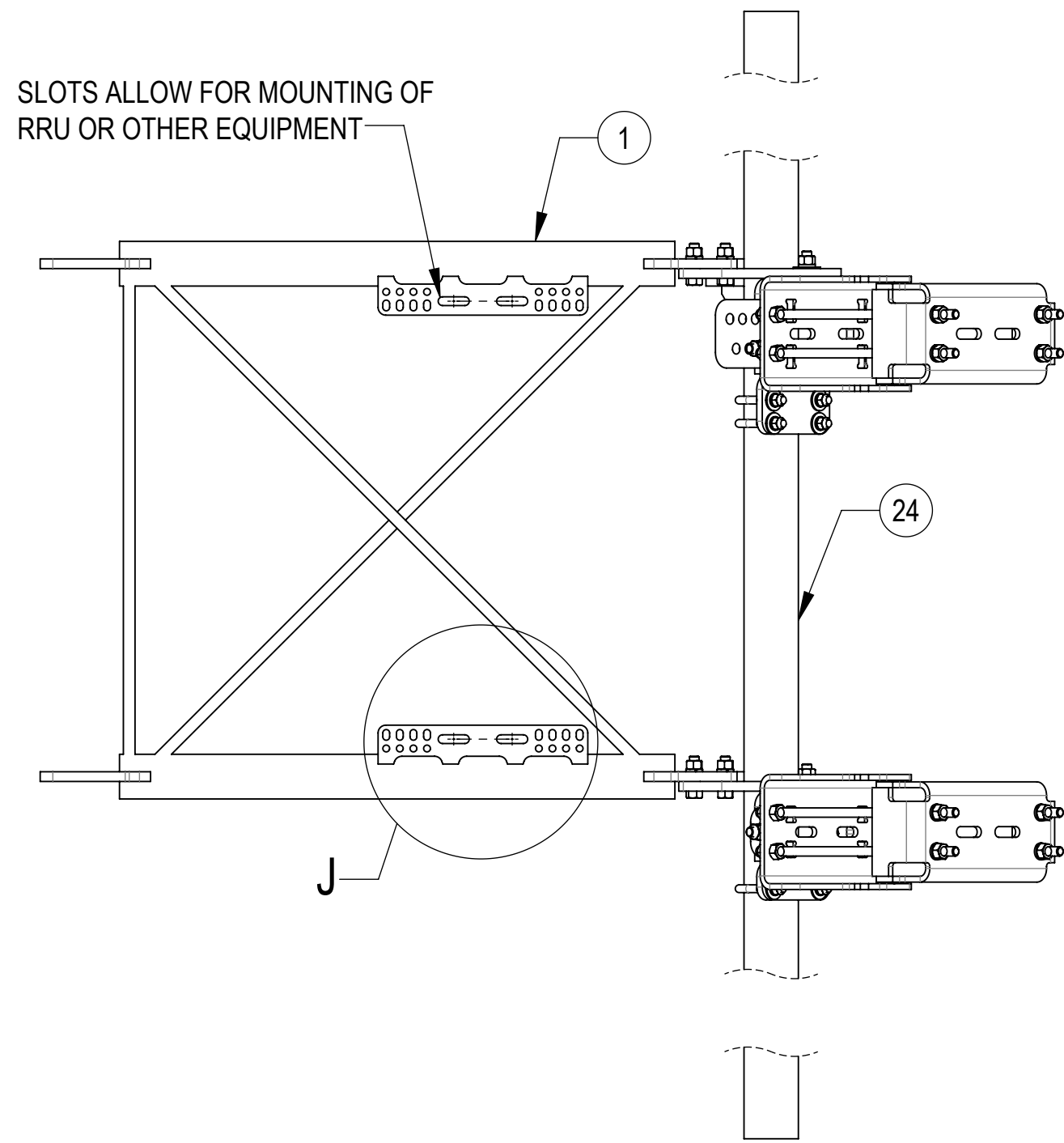
COMMSCOPE, INC. OF NORTH CAROLINA				
TITLE PG,SF,15'FP,(4)120"AP				
SIZE <b>C</b>	SCALE <b>1:22</b>	DOCUMENT NO. SFG23RHDX-15-4-120		
		DRAWING		SHEET
		VERSION	STATUS	REVISION
		01	RE	B
				4 OF 7

4

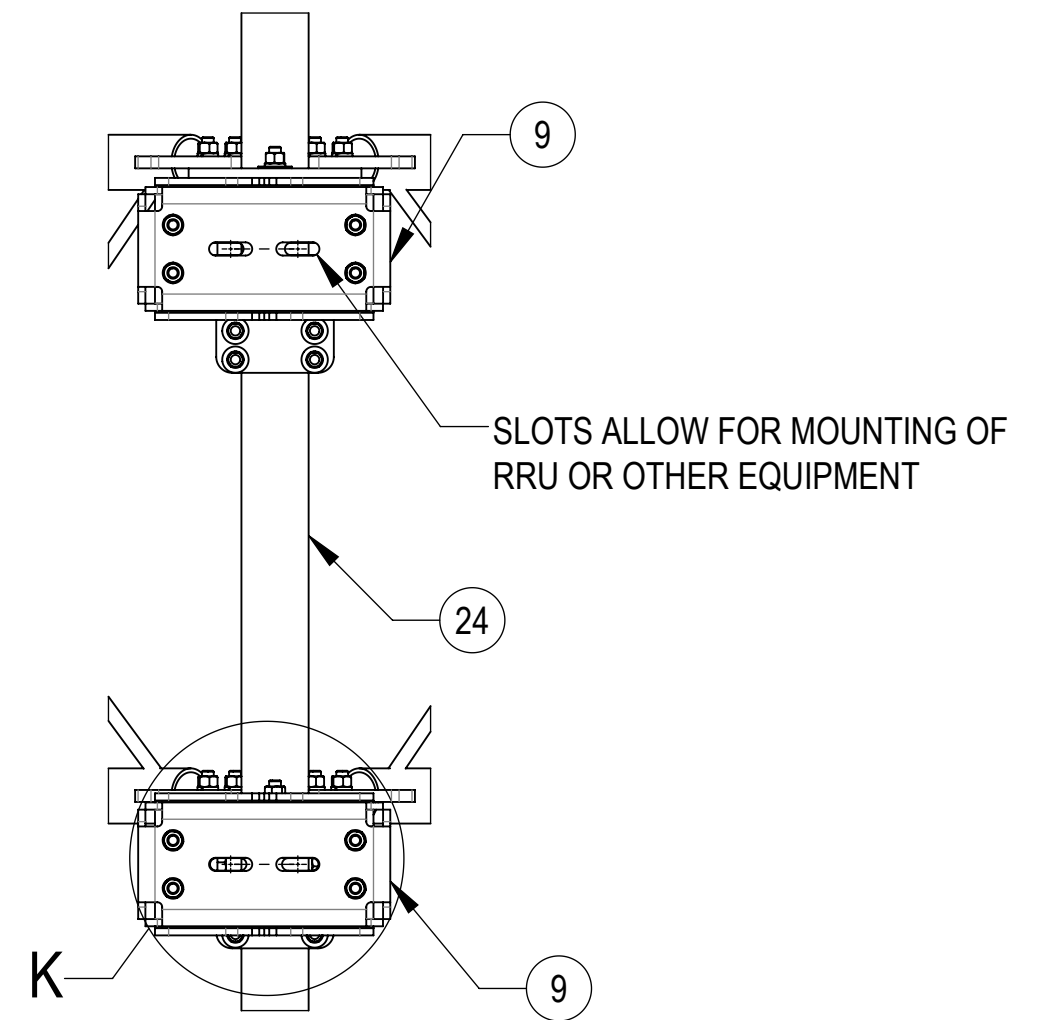
3

2

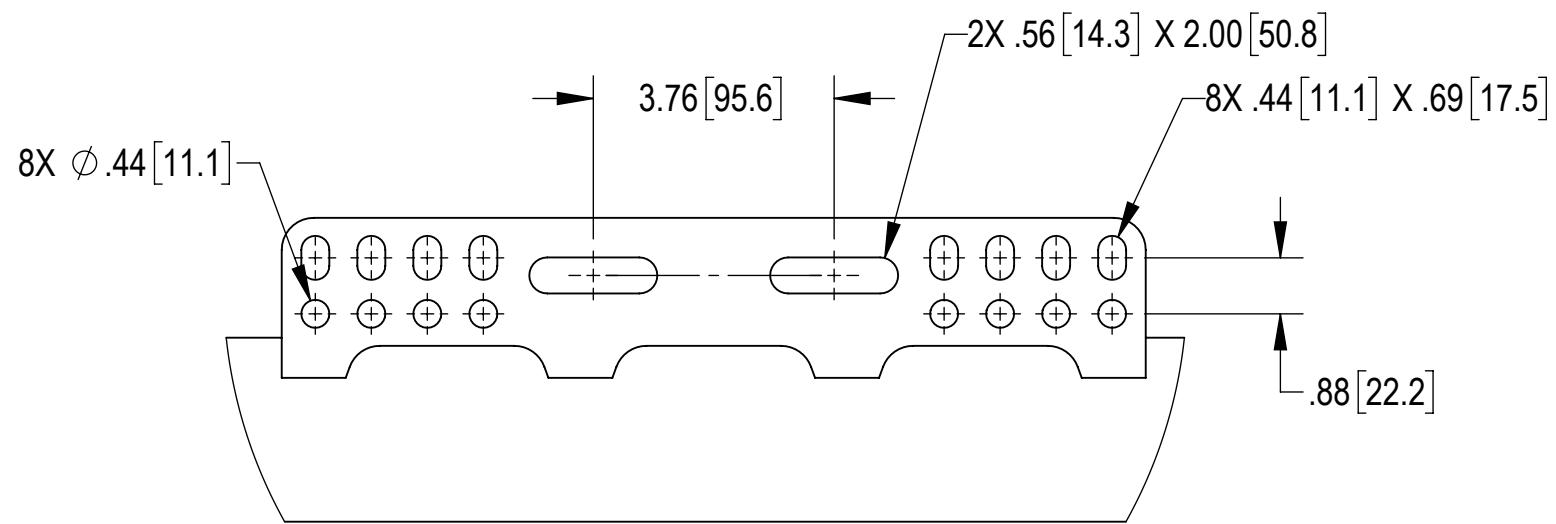
1



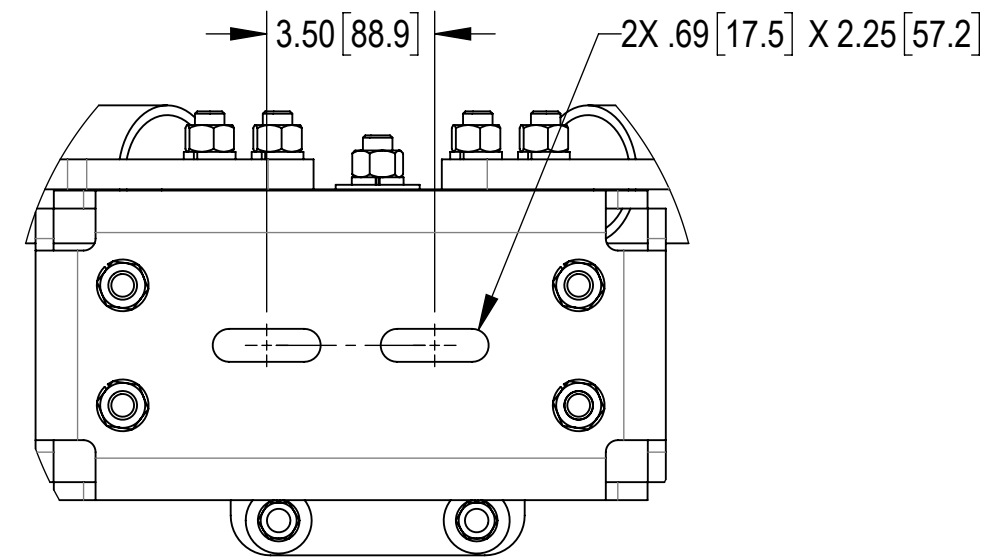
SIDE VIEW



BACK CROP VIEW



DETAIL J  
SCALE 1 : 3



DETAIL K  
SCALE 1 : 4

COMMSCOPE, INC. OF NORTH CAROLINA				
TITLE PG,SF,15'FP,(4)120"AP				
SIZE <b>C</b>	SCALE <b>1:10</b>	DOCUMENT NO. SFG23RHDX-15-4-120		
		DRAWING		SHEET 5 OF 7
		VERSION 01	STATUS RE	

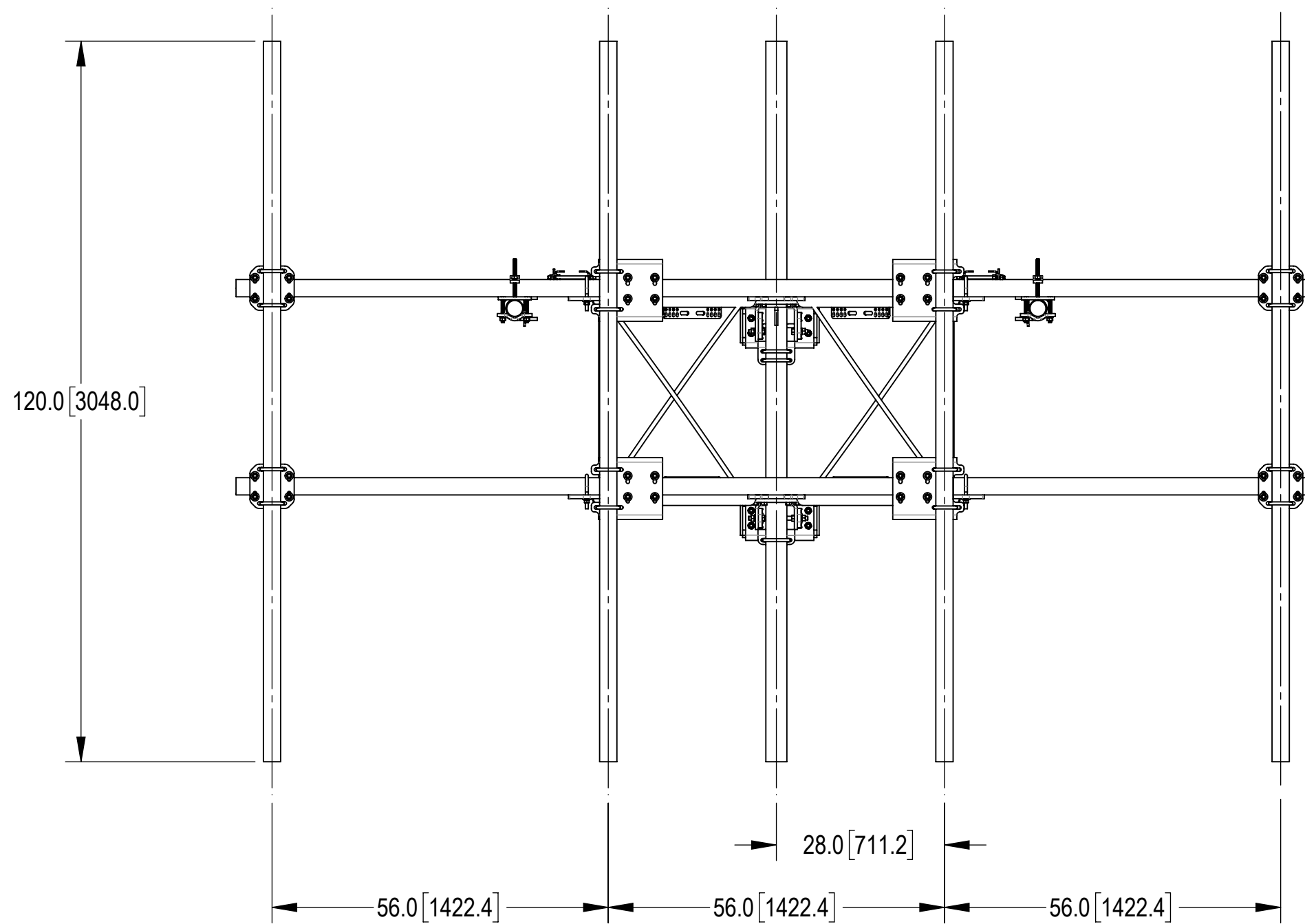
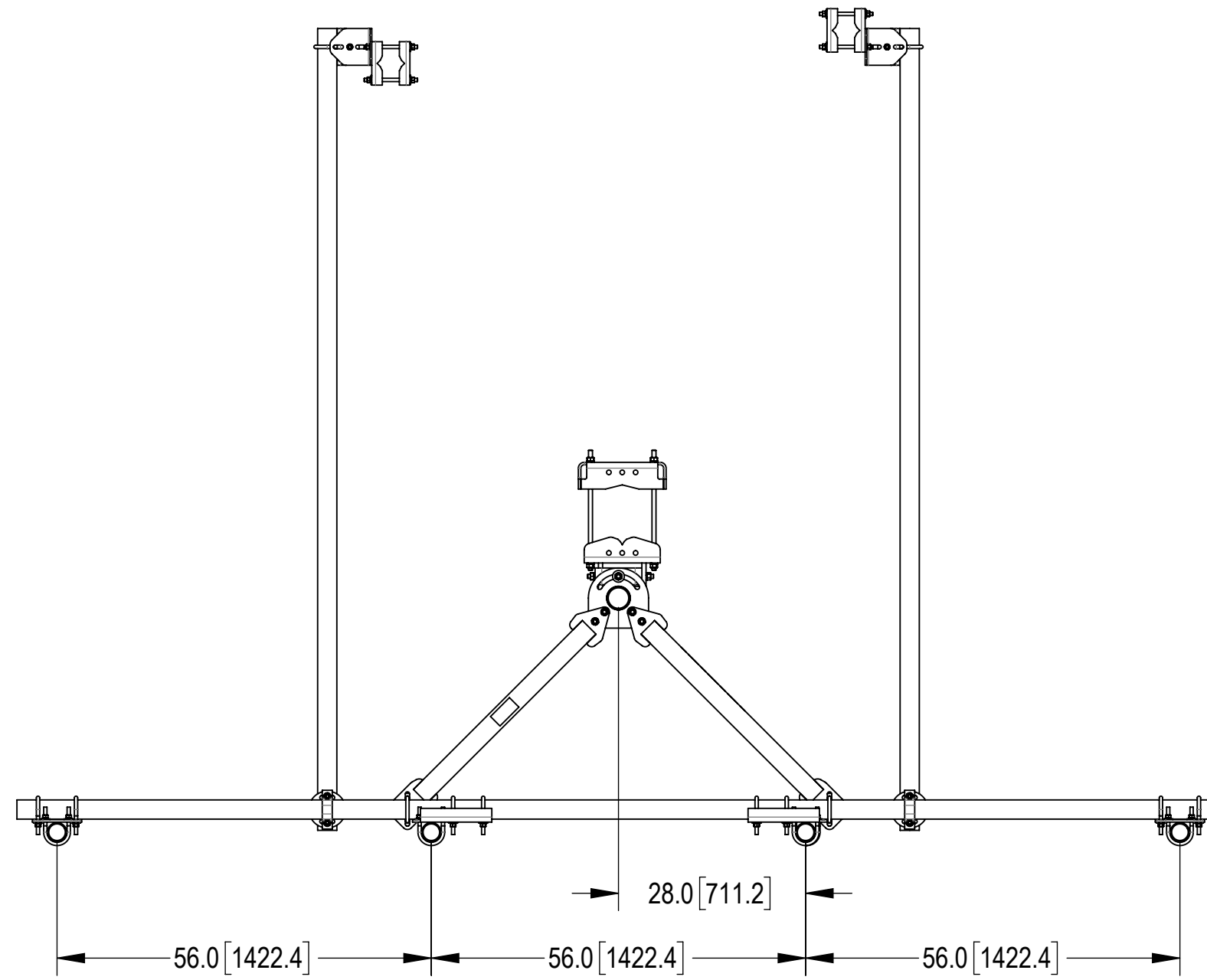
4

3

2

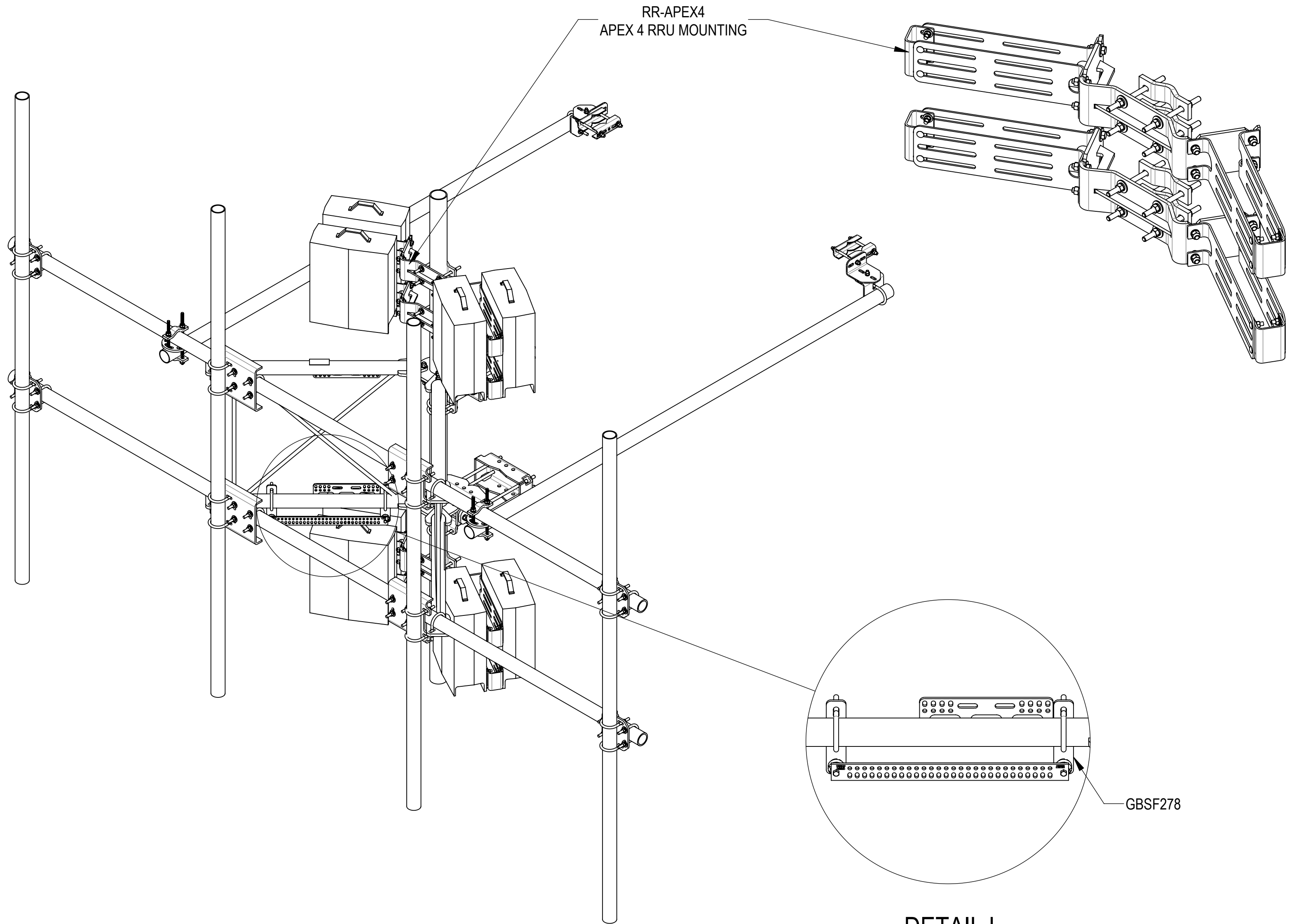
1

# ANTENNA SPACING SHOWN


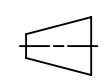


COMMSCOPE, INC. OF NORTH CAROLINA					
TITLE PG,SF,15'FP,(4)120"AP					
SIZE <b>C</b>	SCALE <b>1:20</b>	DOCUMENT NO. SFG23RHDx-15-4-120			
		DRAWING			SHEET
		VERSION	STATUS	REVISION	6 OF 7
		01	RE	B	

ACCESSORIES ORDERED SEPARATELY:



**DETAIL L**  
SCALE 1 : 8

COMMSCOPE, INC. OF NORTH CAROLINA				
TITLE PG,SF,15'FP,(4)120"AP				
SIZE <b>C</b>	SCALE <b>1:14</b>	DOCUMENT NO. SFG23RHDx-15-4-120		
 		DRAWING		SHEET
		VERSION 01	STATUS RE	REVISION B