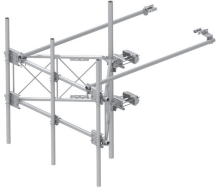


# SFG22RHDXL9-3-96



G22RHDXL PIM OPTIMIZED SPACING High Capacity Sector Frame with extended 10' Spine for RRU Mounting & extended frame for sites requiring increased sector to sector antenna spacing. 2 7/8in OD x 9ft face with (3) 2-7/8in OD x 96in Antenna pipes

- Extended spine for SFG22 RHDX mounts that decrease PIM from radio relocation plus extended stand-off frame
- Increased versatility and stability
- Updated frame provides higher loading
- More RRU mounting available, reducing need for additional mounts
- Better load management
- Less structure stress
- Can be used in combination with APEX RRU mounts

## Product Classification

<b>Product Type</b>	High capacity Tower sector frame
<b>Product Brand</b>	PIM-guard
<b>Product Series</b>	G2

## General Specifications

<b>Mounting</b>	Angle 60°, 203.2 mm (8 in)   Straight or tapered legs up to 203.2 mm (8 in) OD
<b>Patent Number</b>	Patent pending
<b>Pipe, quantity</b>	3
<b>Sectors, quantity</b>	1
<b>Tower Taper</b>	Non-tapered   Tapered

## Dimensions

<b>Height</b>	2,438.4 mm   96 in
<b>Face Width</b>	2.743 m   9 ft
<b>Width</b>	2,743.2 mm   108 in
<b>Pipe Length</b>	2,438.4 mm   96 in
<b>Face Support Pipe Diameter</b>	73.025 mm   2.875 in
<b>Mounting Diameter, maximum</b>	218.44 mm   8.6 in

# SFG22RHDXL9-3-96

---

<b>Mounting Diameter, minimum</b>	38.1 mm   1.5 in
<b>Pipe Outer Diameter</b>	73.025 mm   2.875 in
<b>Stand-off Distance</b>	1,549.4 mm   61 in

## Material Specifications

<b>Material Type</b>	Hot dip galvanized steel
----------------------	--------------------------

## Mechanical Specifications

<b>Wind Rating</b>	For Specifications, please contact <a href="mailto:steelproducts@commscope.com">steelproducts@commscope.com</a> or call 800-255-1479
--------------------	--

## Packaging and Weights

<b>Included</b>	Antenna mounting pipes   Crossover plates   Frame   Stiff arms (2)   Tower attachment
<b>Packaging quantity</b>	1
<b>Weight, net</b>	353.965 kg   780.36 lb

## \* Footnotes

<b>Wind Rating</b>	BWS—Base Wind Speed; FBC—Florida Building Code
--------------------	--