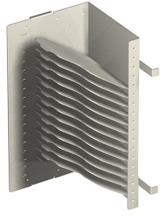


# MX6-12SPNL-R

---



OMX Fiber Splice Block, unloaded, for 12 splice wheels, right sided, putty white

## OBSOLETE

This product was discontinued on: December 30, 2018

## Product Classification

|                              |                                      |
|------------------------------|--------------------------------------|
| <b>Regional Availability</b> | EMEA   Latin America   North America |
| <b>Product Type</b>          | Fiber splice block                   |
| <b>Product Brand</b>         | OMX600®                              |
| <b>Product Series</b>        | OMX                                  |

## General Specifications

|                                   |                               |
|-----------------------------------|-------------------------------|
| <b>Functionality</b>              | Splicing                      |
| <b>Application</b>                | Used in OMX-style frames only |
| <b>Body Style</b>                 | Right orientation             |
| <b>Cable Exit Location</b>        | Side                          |
| <b>Color</b>                      | Putty white                   |
| <b>Color, front</b>               | Putty white                   |
| <b>Growth Configuration</b>       | Unloaded                      |
| <b>Interface, front</b>           | Unloaded                      |
| <b>Patching Capacity, maximum</b> | 0                             |
| <b>Rack Type</b>                  | OMX                           |
| <b>Splicing Capacity, maximum</b> | 144                           |

## Material Specifications

|                      |               |
|----------------------|---------------|
| <b>Finish</b>        | Powder coated |
| <b>Material Type</b> | Steel         |

# MX6-12SPNL-R

---

## Packaging and Weights

**Packaging quantity** 1