

# EGRZZV4-65D-R8



18-port sector antenna, 2x 694-862 (R1), 2x 880-960 (R2), 2x 694-960 (R3), 4x 1427-2690 (Y2&Y4) & 8x 1695-2690 (Y1/Y3/Y5/Y6) MHz, 65° HPBW, 8x RET.

- All Internal RET actuators are connected in “Cascaded SRET” configuration

## OBSOLETE

This product was discontinued on: **March 31, 2021**

### Replaced By:

EGRZZV4-65D-R8V2    18-port sector antenna, 2x 694-862 (R1), 2x 880-960 (R2), 2x 694-960 (R3), 4x 1427-2690 (Y2&Y4) & 8x 1695-2690 (Y1/Y3/Y5/Y6) MHz, 65° HPBW, 8x RET.

## General Specifications

<b>Antenna Type</b>	Sector
<b>Band</b>	Multiband
<b>Grounding Type</b>	RF connector inner conductor and body grounded to reflector and mounting bracket
<b>Performance Note</b>	Outdoor usage   Wind loading figures are validated by wind tunnel measurements described in white paper WP-112534-EN
<b>Radome Material</b>	Fiberglass, UV resistant
<b>Reflector Material</b>	Aluminum
<b>RF Connector Interface</b>	4.3-10 Female
<b>RF Connector Location</b>	Bottom
<b>RF Connector Quantity, high band</b>	12
<b>RF Connector Quantity, low band</b>	6
<b>RF Connector Quantity, total</b>	18

## Remote Electrical Tilt (RET) Information

<b>RET Hardware</b>	CommRET v1   CommRET v2
<b>RET Interface</b>	8-pin DIN Female   8-pin DIN Male
<b>RET Interface, quantity</b>	1 female   1 male

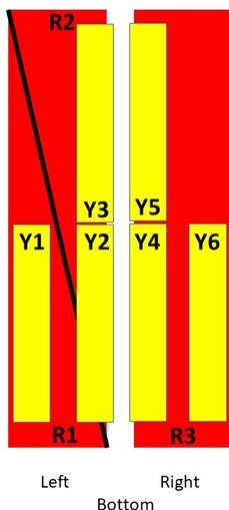
# EGRZZV4-65D-R8

<b>Input Voltage</b>	10–30 Vdc
<b>Internal RET</b>	High band (5)   Low band (3)
<b>Power Consumption, idle state, maximum</b>	2 W
<b>Power Consumption, normal conditions, maximum</b>	9 W
<b>Protocol</b>	3GPP/AISG 2.0 (Single RET)

## Dimensions

<b>Width</b>	498 mm   19.606 in
<b>Depth</b>	197 mm   7.756 in
<b>Length</b>	2688 mm   105.827 in
<b>Net Weight, without mounting kit</b>	62 kg   136.686 lb

## Array Layout

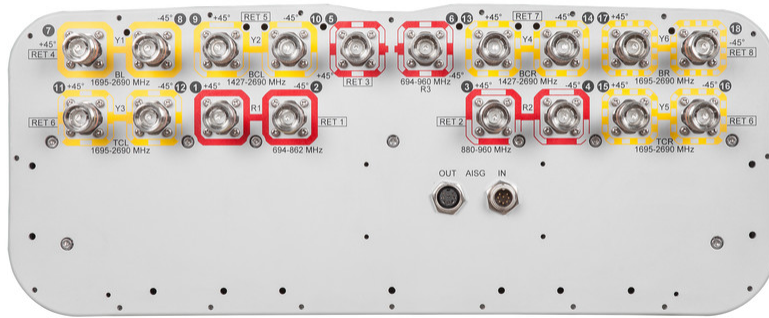


Array	Freq (MHz)	Conns	RET <sub>(SRET)</sub>	AISG RET UID
R1	694-862	1-2	1	CPxxxxxxxxxxxxxxxxR1
R2	880-960	3-4	2	CPxxxxxxxxxxxxxxxxR2
R3	694-960	5-6	3	CPxxxxxxxxxxxxxxxxR3
Y1	1695-2690	7-8	4	CPxxxxxxxxxxxxxxxxY1
Y2	1427-2690	9-10	5	CPxxxxxxxxxxxxxxxxY2
Y3	1695-2690	11-12	6	CPxxxxxxxxxxxxxxxxY3
Y5	1695-2690	15-16		
Y4	1427-2690	13-14	7	CPxxxxxxxxxxxxxxxxY4
Y6	1695-2690	17-18	8	CPxxxxxxxxxxxxxxxxY6

(Sizes of colored boxes are not true depictions of array sizes)

## Port Configuration

# EGRZZV4-65D-R8



## Electrical Specifications

<b>Impedance</b>	50 ohm
<b>Operating Frequency Band</b>	1427 – 2690 MHz   1695 – 2690 MHz   694 – 862 MHz   694 – 960 MHz   880 – 960 MHz
<b>Polarization</b>	±45°
<b>Total Input Power, maximum</b>	900 W @ 50 °C

## Electrical Specifications

	<b>R1</b>	<b>R2</b>	<b>R3</b>	<b>Y1/Y3/Y5/Y6</b>	<b>Y1/Y3/Y5/Y6</b>	<b>Y1/Y3/Y5/Y6</b>	<b>Y2&amp;Y4</b>	<b>Y2&amp;Y4</b>	<b>Y2&amp;Y4</b>
<b>Frequency Band, MHz</b>	<b>694–862</b>	<b>880–960</b>	<b>694–960</b>	<b>1695–2200</b>	<b>2300–2400</b>	<b>2490–2690</b>	<b>1427–1518</b>	<b>1695–2180</b>	<b>2300–2690</b>
<b>Gain, dBi</b>	15.3	15.5	16.1	17.4	18	18.1	15.2	17	17.8
<b>Beamwidth, Horizontal, degrees</b>	69	64	68	59	58	59	66	62	58
<b>Beamwidth, Vertical, degrees</b>	8.6	7.4	8.1	6.9	5.7	5.3	9.5	7.4	5.6
<b>Beam Tilt, degrees</b>	2–14	2–14	2–14	2–12	2–12	2–12	2–12	2–12	2–12
<b>USLS (First Lobe), dB</b>	17	20	19	18	21	22	23	18	23
<b>Front-to-Back Ratio at 180°, dB</b>	34	27	29	33	32	29	35	36	32
<b>Isolation, Cross Polarization, dB</b>	28	28	28	25	25	25	25	25	25

# EGRZZV4-65D-R8

<b>Isolation, Inter-band, dB</b>	28	28	28	25	25	25	25	25	25
<b>VSWR   Return loss, dB</b>	1.5 14.0	1.5 14.0	1.5 14.0	1.5 14.0	1.5 14.0	1.5 14.0	1.5 14.0	1.5 14.0	1.5 14.0
<b>PIM, 3rd Order, 2 x 20 W, dBc</b>	-150	-150	-150	-150	-150	-150	-150	-150	-150
<b>Input Power per Port at 50°C, maximum, watts</b>	200	200	200	200	200	200	200	200	200

## Electrical Specifications, BASTA

<b>Frequency Band, MHz</b>	<b>694-862</b>	<b>880-960</b>	<b>694-960</b>	<b>1695-2200</b>	<b>2300-2400</b>	<b>2490-2690</b>	<b>1427-1518</b>	<b>1695-2180</b>	<b>2300-2690</b>
<b>Gain by all Beam Tilts, average, dBi</b>	15	15.3	15.7	16.6	17.7	17.5	14.9	16.2	17.4
<b>Gain by all Beam Tilts Tolerance, dB</b>	±0.5	±0.4	±0.6	±1	±0.5	±0.8	±0.4	±0.9	±0.5
<b>Gain by Beam Tilt, average, dBi</b>	2° 14.8 8° 15.1 14° 14.8	2° 15.1 8° 15.5 14° 14.9	2° 15.6 8° 15.9 14° 15.5	2° 16.4 7° 16.8 12° 16.5	2° 17.4 7° 17.8 12° 17.5	2° 17.2 7° 17.7 12° 17.3	2° 14.7 7° 14.9 12° 14.9	2° 16.0 7° 16.3 12° 16.1	2° 17.0 7° 17.6 12° 17.3
<b>Beamwidth, Horizontal Tolerance, degrees</b>	±8.1	±3.5	±6.8	±10.5	±4.9	±7.3	±7.1	±9.3	±4.9
<b>Beamwidth, Vertical Tolerance, degrees</b>	±0.8	±0.5	±1.1	±0.9	±0.2	±0.2	±0.5	±1	±0.5
<b>USLS, beampeak to 20° above beampeak, dB</b>	13	14	16	16	16	16	14	17	18
<b>Front-to-Back Total Power at 180° ± 30°, dB</b>	22	22	23	27	26	24	25	28	26
<b>CPR at Boresight, dB</b>	21	19	20	19	18	20	18	19	21
<b>CPR at Sector, dB</b>	9	12	11	7	5	6	3	6	4

## Mechanical Specifications

<b>Effective Projective Area (EPA), frontal</b>	1 m <sup>2</sup>   10.764 ft <sup>2</sup>
<b>Effective Projective Area (EPA), lateral</b>	0.35 m <sup>2</sup>   3.767 ft <sup>2</sup>
<b>Mechanical Tilt Range</b>	0°-12°
<b>Wind Loading @ Velocity, frontal</b>	1,070.0 N @ 150 km/h (240.5 lbf @ 150 km/h)
<b>Wind Loading @ Velocity, lateral</b>	375.0 N @ 150 km/h (84.3 lbf @ 150 km/h)
<b>Wind Loading @ Velocity, maximum</b>	1,385.0 N @ 150 km/h (311.4 lbf @ 150 km/h)
<b>Wind Loading @ Velocity, rear</b>	880.0 N @ 150 km/h (197.8 lbf @ 150 km/h)
<b>Wind Speed, maximum</b>	241 km/h (150 mph)

## Packaging and Weights

# EGRZZV4-65D-R8

---

<b>Width, packed</b>	565 mm   22.244 in
<b>Depth, packed</b>	309 mm   12.165 in
<b>Length, packed</b>	2935 mm   115.551 in
<b>Weight, gross</b>	82.96 kg   182.895 lb

## Regulatory Compliance/Certifications

### Agency

ISO 9001:2015



### Classification

Designed, manufactured and/or distributed under this quality management system

## Included Products

- |           |   |  |
|-----------|---|--|
| BSAMNT-4  | - | Wide Profile Antenna Downtilt Mounting Kit for 2.4 - 4.5 in (60 - 115 mm) OD round members. Kit contains one scissor top bracket set and one bottom bracket set. |
| BSAMNT-M4 | - | Middle Downtilt Mounting Kit for Long Antennas for 2.4 - 4.5 in (60 - 115 mm) OD round members. Kit contains one scissor bracket set.                            |

## \* Footnotes

### Performance Note

Severe environmental conditions may degrade optimum performance

# BSAMNT-4



Wide Profile Antenna Downtilt Mounting Kit for 2.4 - 4.5 in (60 - 115 mm) OD round members. Kit contains one scissor top bracket set and one bottom bracket set.

## Product Classification

**Product Type** Downtilt mounting kit

## General Specifications

**Application** Outdoor

**Color** Silver

## Dimensions

**Compatible Diameter, maximum** 115 mm | 4.528 in

**Compatible Diameter, minimum** 60 mm | 2.362 in

**Weight, net** 6.5 kg | 14.33 lb

## Material Specifications

**Material Type** Galvanized steel

## Packaging and Weights

**Included** Brackets | Hardware

**Packaging quantity** 1

## Regulatory Compliance/Certifications

Agency	Classification
CHINA-ROHS	Below maximum concentration value
ISO 9001:2015	Designed, manufactured and/or distributed under this quality management system
REACH-SVHC	Compliant as per SVHC revision on <a href="http://www.commscope.com/ProductCompliance">www.commscope.com/ProductCompliance</a>
ROHS	Compliant
UK-ROHS	Compliant



# BSAMNT-M4



Middle Downtilt Mounting Kit for Long Antennas for 2.4 - 4.5 in (60 - 115 mm) OD round members. Kit contains one scissor bracket set.

## Product Classification

**Product Type** Downtilt mounting kit

## General Specifications

**Application** Outdoor

**Color** Silver

## Dimensions

**Compatible Diameter, maximum** 115 mm | 4.528 in

**Compatible Diameter, minimum** 60 mm | 2.362 in

**Weight, net** 4.6 kg | 10.141 lb

## Material Specifications

**Material Type** Galvanized steel

## Packaging and Weights

**Included** Brackets | Hardware

**Packaging quantity** 1

## Regulatory Compliance/Certifications

Agency	Classification
CHINA-ROHS	Below maximum concentration value
ISO 9001:2015	Designed, manufactured and/or distributed under this quality management system
REACH-SVHC	Compliant as per SVHC revision on <a href="http://www.commscope.com/ProductCompliance">www.commscope.com/ProductCompliance</a>
ROHS	Compliant
UK-ROHS	Compliant

