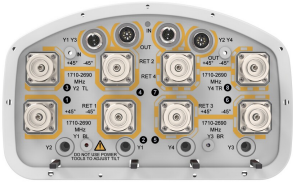


# V4-65D-R4



8-port sector antenna, 8x 1710–2690 MHz, 65° HPBW, 4x RET with manual override.

- Employs state-of-the-art ultra wideband technology providing excellent RF performance in all bands
- Integrated Internal Remote Electrical Tilt (RET), with independent control of electrical tilt with manual override on all arrays

**OBSOLETE**

This product was discontinued on: March 27, 2020

## General Specifications

<b>Antenna Type</b>	Sector
<b>Band</b>	Single band
<b>Color</b>	Light Gray (RAL 7035)
<b>Grounding Type</b>	RF connector inner conductor and body grounded to reflector and mounting bracket
<b>Performance Note</b>	Outdoor usage   Wind loading figures are validated by wind tunnel measurements described in white paper WP-112534-EN
<b>Radome Material</b>	Fiberglass, UV resistant
<b>Radiator Material</b>	Low loss circuit board
<b>Reflector Material</b>	Aluminum
<b>RF Connector Interface</b>	7-16 DIN Female
<b>RF Connector Location</b>	Bottom
<b>RF Connector Quantity, high band</b>	8
<b>RF Connector Quantity, total</b>	8

## Remote Electrical Tilt (RET) Information

<b>RET Interface</b>	8-pin DIN Female   8-pin DIN Male
<b>RET Interface, quantity</b>	2 female   2 male
<b>Input Voltage</b>	10–30 Vdc
<b>Internal RET</b>	High band (4)
<b>Power Consumption, idle state, maximum</b>	1 W

# V4-65D-R4

**Power Consumption, normal conditions, maximum** 8 W  
**Protocol** 3GPP/AISG 2.0 (Single RET)

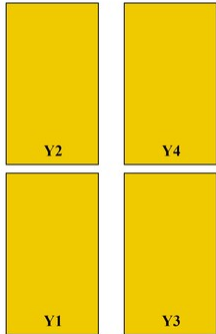
## Dimensions

**Width** 301 mm | 11.85 in  
**Depth** 180 mm | 7.087 in  
**Length** 2675 mm | 105.315 in  
**Net Weight, without mounting kit** 29.5 kg | 65.036 lb

## Array Layout

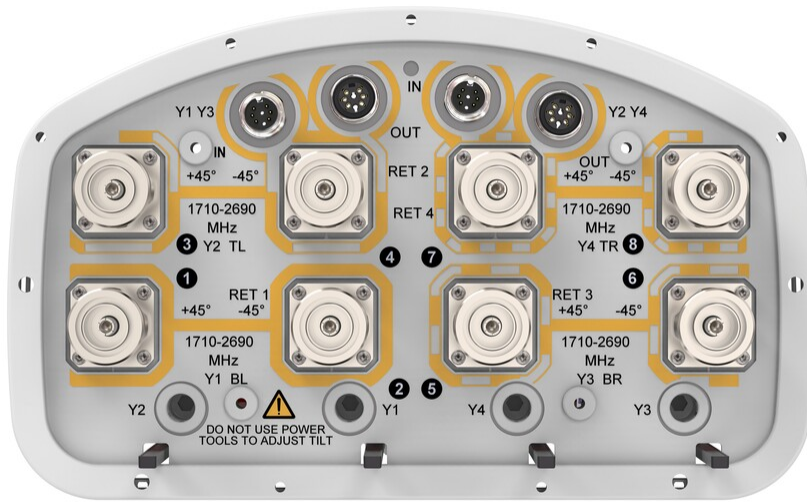
Array ID	Frequency (MHz)	RF Connector	RET (SRET)	AISG No.	RET UID
Y1	1710-2690	1 - 2	1	AISG1	CPXXXXXXXXXXXXY1
Y2	1710-2690	3 - 4	2	AISG2	CPXXXXXXXXXXXXY2
Y3	1710-2690	5 - 6	3	AISG1	CPXXXXXXXXXXXXY3
Y4	1710-2690	7 - 8	4	AISG2	CPXXXXXXXXXXXXY4

(Sizes of colored boxes are not true depictions of array sizes)



## Port Configuration

# V4-65D-R4



## Electrical Specifications

<b>Impedance</b>	50 ohm
<b>Operating Frequency Band</b>	1710 – 2690 MHz
<b>Polarization</b>	±45°
<b>Total Input Power, maximum</b>	900 W @ 50 °C

## Electrical Specifications

Frequency Band, MHz	1710–1880	1920–2200	2300–2500	2500–2690
<b>Gain, dBi</b>	16.9	17.8	18.3	18.9
<b>Beamwidth, Horizontal, degrees</b>	70	67	60	54
<b>Beamwidth, Vertical, degrees</b>	6.9	6.3	5.5	5.2
<b>Beam Tilt, degrees</b>	0–10	0–10	0–10	0–10
<b>USLS (First Lobe), dB</b>	16	17	20	20
<b>Front-to-Back Ratio at 180°, dB</b>	35	37	40	39
<b>Isolation, Cross Polarization, dB</b>	28	28	28	28
<b>VSWR   Return loss, dB</b>	1.5 14.0	1.5 14.0	1.5 14.0	1.5 14.0
<b>PIM, 3rd Order, 2 x 20 W, dBc</b>	-150	-150	-150	-150
<b>Input Power per Port at 50°C, maximum, watts</b>	200	200	200	200

# V4-65D-R4

## Electrical Specifications, BASTA

Frequency Band, MHz	1710–1880	1920–2200	2300–2500	2500–2690
Gain by all Beam Tilts, average, dBi	16.8	17.4	18.1	18.5
Gain by all Beam Tilts Tolerance, dB	±0.3	±0.5	±0.4	±0.6
Gain by Beam Tilt, average, dBi	0°   16.6 5°   16.8 10°   16.8	0°   17.3 5°   17.5 10°   17.3	0°   17.8 5°   18.1 10°   18.1	0°   18.4 5°   18.7 10°   18.2
Beamwidth, Horizontal Tolerance, degrees	±2.7	±3	±4.1	±2.8
Beamwidth, Vertical Tolerance, degrees	±0.5	±0.6	±0.4	±0.4
USLS, beampeak to 20° above beampeak, dB	15	15	18	18
Front-to-Back Total Power at 180° ± 30°, dB	25	27	28	27
CPR at Boresight, dB	15	16	16	15
CPR at Sector, dB	12	12	6	5

## Mechanical Specifications

Wind Loading @ Velocity, frontal	439.0 N @ 150 km/h (98.7 lbf @ 150 km/h)
Wind Loading @ Velocity, lateral	372.0 N @ 150 km/h (83.6 lbf @ 150 km/h)
Wind Loading @ Velocity, maximum	845.0 N @ 150 km/h (190.0 lbf @ 150 km/h)
Wind Loading @ Velocity, rear	445.0 N @ 150 km/h (100.0 lbf @ 150 km/h)
Wind Speed, maximum	241 km/h (150 mph)

## Packaging and Weights

Width, packed	409 mm   16.102 in
Depth, packed	309 mm   12.165 in
Length, packed	2924 mm   115.118 in
Weight, gross	48 kg   105.822 lb

## Regulatory Compliance/Certifications

Agency	Classification
CHINA-ROHS	Above maximum concentration value
ISO 9001:2015	Designed, manufactured and/or distributed under this quality management system
ROHS	Compliant/Exempted

# V4-65D-R4

---

UK-ROHS

Compliant/Exempted



## Included Products

- |          |   |  |
|----------|---|--|
| BSAMNT-3 | - | Wide Profile Antenna Downtilt Mounting Kit for 2.4 - 4.5 in (60 - 115 mm) OD round members. Kit contains one scissor top bracket set and one bottom bracket set. |
| BSAMNT-M | - | Middle Downtilt Mounting Kit for Long Antennas for 2.4 - 4.5 in (60 - 115 mm) OD round members. Kit contains one scissor bracket set.                            |

## \* Footnotes

**Performance Note**      Severe environmental conditions may degrade optimum performance