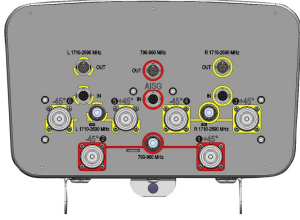


CVVPX308.10R3



6-port sector antenna, 2x 790–960 and 4x 1710–2690 MHz, 65° HPBW, 3x RET with manual override.

- Integrated Internal Remote Electrical Tilt (RET), with independent control of electrical tilt with manual override on all arrays

OBSOLETE

This product was discontinued on: March 27, 2020

General Specifications

| | |
|---|--|
| Antenna Type | Sector |
| Band | Multiband |
| Grounding Type | RF connector inner conductor and body grounded to reflector and mounting bracket |
| Performance Note | Outdoor usage |
| Radome Material | ASA, UV stabilized |
| Radiator Material | Low loss circuit board |
| Reflector Material | Aluminum |
| RF Connector Interface | 7-16 DIN Female |
| RF Connector Location | Bottom |
| RF Connector Quantity, high band | 4 |
| RF Connector Quantity, low band | 2 |
| RF Connector Quantity, total | 6 |

Remote Electrical Tilt (RET) Information

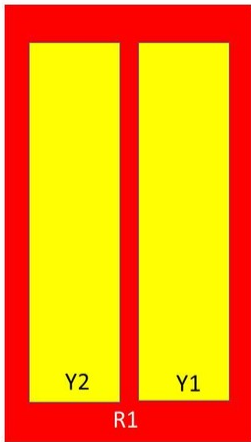
| | |
|--|-----------------------------------|
| RET Interface | 8-pin DIN Female 8-pin DIN Male |
| RET Interface, quantity | 3 female 3 male |
| Input Voltage | 10–30 Vdc |
| Internal RET | High band (2) Low band (1) |
| Power Consumption, idle state, maximum | 2 W |
| Power Consumption, normal conditions, maximum | 13 W |
| Protocol | 3GPP/AISG 2.0 (Single RET) |

CVVPX308.10R3

Dimensions

| | |
|---|---------------------|
| Width | 354 mm 13.937 in |
| Depth | 210 mm 8.268 in |
| Length | 2025 mm 79.724 in |
| Net Weight, without mounting kit | 26.1 kg 57.541 lb |

Array Layout



| Array | Freq (MHz) | Conns | RET (SRET) | AISG RET UID |
|-------|------------|-------|------------|----------------------|
| R1 | 790-960 | 1-2 | 1 | ARxxxxxxxxxxxxxxxxx1 |
| Y1 | 1710-2690 | 3-4 | 2 | ARxxxxxxxxxxxxxxxxx2 |
| Y2 | 1710-2690 | 5-6 | 3 | ARxxxxxxxxxxxxxxxxx3 |

Left Bottom Right

(Sizes of colored boxes are not true depictions of array sizes)

Electrical Specifications

| | |
|---------------------------------|---------------------------------|
| Impedance | 50 ohm |
| Operating Frequency Band | 1710 – 2690 MHz 790 – 960 MHz |
| Polarization | ±45° |

Electrical Specifications

| Frequency Band, MHz | 790–890 | 890–960 | 1710–1920 | 1920–2180 | 2300–2690 |
|---------------------------------------|---------|---------|-----------|-----------|-----------|
| Gain, dBi | 15.5 | 15.9 | 16.5 | 17.1 | 17.8 |
| Beamwidth, Horizontal, degrees | 65 | 64 | 61 | 60 | 62.6 |
| Beamwidth, Vertical, degrees | 11.2 | 10.3 | 8.3 | 7.4 | 5.9 |
| Beam Tilt, degrees | 0–10 | 0–10 | 0–10 | 0–10 | 0–10 |
| USLS (First Lobe), dB | 18 | 18 | 18 | 18 | 18 |
| Front-to-Back Ratio at 180°, | 27 | 28 | 30 | 35 | 33 |

CVVPX308.10R3

dB

| | | | | | |
|---|-------------|-------------|------------|------------|------------|
| Isolation, Cross Polarization, dB | 25 | 25 | 25 | 25 | 25 |
| Isolation, Inter-band, dB | 30 | 30 | 30 | 30 | 30 |
| VSWR Return loss, dB | 1.43 15.0 | 1.43 15.0 | 1.5 14.0 | 1.5 14.0 | 1.5 14.0 |
| PIM, 3rd Order, 2 x 20 W, dBc | -150 | -150 | -150 | -150 | -150 |
| Input Power per Port, maximum, watts | 300 | 300 | 250 | 250 | 250 |

Electrical Specifications, BASTA

| Frequency Band, MHz | 790–890 | 890–960 | 1710–1920 | 1920–2180 | 2300–2690 |
|--|--------------------------------------|--------------------------------------|--------------------------------------|--------------------------------------|--------------------------------------|
| Gain by all Beam Tilts, average, dBi | 15.3 | 15.7 | 16.2 | 16.7 | 17.4 |
| Gain by all Beam Tilts Tolerance, dB | ±0.3 | ±0.2 | ±0.4 | ±0.3 | ±0.5 |
| Gain by Beam Tilt, average, dBi | 0° 15.4 5° 15.3 10° 15.2 | 0° 15.7 5° 15.7 10° 15.6 | 0° 16.3 5° 16.2 10° 16.3 | 0° 16.7 5° 16.7 10° 16.7 | 0° 17.6 5° 17.5 10° 17.1 |
| Beamwidth, Horizontal Tolerance, degrees | ±1.4 | ±1.3 | ±2.5 | ±2.1 | ±6.1 |
| Beamwidth, Vertical Tolerance, degrees | ±0.6 | ±0.3 | ±0.5 | ±0.6 | ±0.5 |
| USLS, beampeak to 20° above beampeak, dB | 18 | 18 | 18 | 18 | 18 |
| Front-to-Back Total Power at 180° ± 30°, dB | 25 | 26 | 23 | 25 | 27 |
| CPR at Boresight, dB | 17 | 15 | 21 | 20 | 17 |
| CPR at Sector, dB | 9 | 9 | 7 | 5 | 7 |

Mechanical Specifications

| | |
|---|---|
| Wind Loading @ Velocity, frontal | 904.0 N @ 150 km/h (203.2 lbf @ 150 km/h) |
| Wind Loading @ Velocity, lateral | 348.0 N @ 150 km/h (78.2 lbf @ 150 km/h) |
| Wind Loading @ Velocity, rear | 929.0 N @ 150 km/h (208.8 lbf @ 150 km/h) |
| Wind Speed, maximum | 241 km/h (150 mph) |

Packaging and Weights

| | |
|-----------------------|---------------------|
| Width, packed | 420 mm 16.535 in |
| Depth, packed | 320 mm 12.598 in |
| Length, packed | 2210 mm 87.008 in |

CVVPX308.10R3

Weight, gross

43 kg | 94.799 lb

Regulatory Compliance/Certifications

| Agency | Classification |
|---------------|--|
| CE | Compliant with the relevant CE product directives |
| CHINA-ROHS | Below maximum concentration value |
| ISO 9001:2015 | Designed, manufactured and/or distributed under this quality management system |
| REACH-SVHC | Compliant as per SVHC revision on www.commscope.com/ProductCompliance |
| ROHS | Compliant |
| UK-ROHS | Compliant |



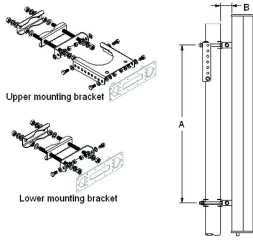
Included Products

- T-029-GL-E – Adjustable Tilt Pipe Mounting Kit for 2.362"-4.5" (60-115mm) OD round members for panel antennas. Includes 2 clamp sets.

* Footnotes

Performance Note Severe environmental conditions may degrade optimum performance

T-029-GL-E



Adjustable Tilt Pipe Mounting Kit for 2.362"-4.5" (60-115mm) OD round members for panel antennas. Includes 2 clamp sets.

Product Classification

Product Type Adjustable tilt mounting kit

General Specifications

Application Outdoor

Color Silver

Dimensions

Compatible Length, maximum 2850 mm | 112.205 in

Compatible Length, minimum 1500 mm | 59.055 in

Compatible Diameter, maximum 115 mm | 4.528 in

Compatible Diameter, minimum 60 mm | 2.362 in

Antenna-to-Pipe Distance 85 mm | 3.346 in

Bracket-to-Bracket Distance 1400 mm | 55.118 in

Weight, net 6 kg | 13.228 lb

Material Specifications

Material Type Galvanized steel

Mechanical Specifications

Mechanical Tilt 0°-8°

Packaging and Weights

Included Brackets | Hardware

Packaging quantity 1

Regulatory Compliance/Certifications

| Agency | Classification |
|--------|---|
| CE | Compliant with the relevant CE product directives |

T-029-GL-E

| | |
|---------------|--|
| CHINA-ROHS | Below maximum concentration value |
| ISO 9001:2015 | Designed, manufactured and/or distributed under this quality management system |
| REACH-SVHC | Compliant as per SVHC revision on www.commscope.com/ProductCompliance |
| ROHS | Compliant |
| UK-ROHS | Compliant |

