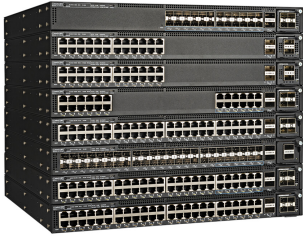


ICX7550 | RUCKUS ICX 7550 Switches



Mid-Range Enterprise-Class Stackable Access/Aggregation Switch with 100GbE

- Purpose-built wired underlay for Wi-Fi 6 deployments to support the latest generation of smartphones, tablets and laptops
- Up to 3x 4/100 GbE ports for uplink and stacking to minimize network bottlenecks
- Best-in-class-level multigigabit 2.5/5/10 GbE and 1/10 GbE fiber port density to eliminate network bottlenecks
- 90W PoE ports (802.3bt) and 2000W PoE budget to power digital signage, UHD surveillance cameras, PoE lighting and other smart-building devices
- Manageability as part of a unified wired and wireless network using RUCKUS SmartZone, RUCKUS Cloud or RUCKUS Unleashed
- Zero Touch Provisioning and auto-configuration based on predefined network policies
- Integration with RUCKUS Analytics for network intelligence and service assurance
- Dual load sharing power supplies for system power redundancy
- Unique stacking capabilities with long distance stacking on standard 100 Gbps QSFP ports up to 10 km and up to 12 units to simplify management and ease network deployment
- Redundant uplink/stacking ports
- Stack level ISSU for continuous operations
- Hot-insertion/removal of stack members to avoid service interruption
- IPv4 and IPv6
- BGP, OSPF, VRRP, PIM, PBR
- VRF
- RUCKUS SmartZone and RUCKUS Cloud support delivers unified wired & wireless management and network automation

The RUCKUS® ICX® 7550 series of midrange stackable switches are purpose-built to provide wired connectivity at the edge of the network for the latest generation Wi-Fi 6 Access-Points. With multigigabit 2.5/5/10 GbE ports and the latest 802.11bt 90W PoE power, the ICX 7550 delivers the performance, flexibility, and scalability required for the most demanding campus deployment scenarios.

The ICX 7550 offers future-ready 40/100 GbE uplink ports to eliminate bottlenecks between network layers and ensure an uninterrupted user experience in high-density wireless environments.

The ICX 7550 comes in 8 different models that can all be seamlessly stacked together to cover a broad range of deployment scenarios including gigabit or multigigabit network edge and 1/10 gigabit fiber for network aggregation or fiber to the room as well as a smart building network edge with a class-leading 2000W PoE budget and up to 90W of power delivery per port.

Product Classification

Regional Availability

Asia | Australia/New Zealand | EMEA | Latin America | North America

Product Type

Ethernet switch

Product Brand

RUCKUS®

General Specifications

ICX7550 | RUCKUS ICX 7550 Switches

Switching Capacity, maximum	1020 Gb/s
1 GbE RJ45 Ports, quantity, maximum	48
1 GbE SFP Ports, quantity, maximum	48
10 GbE SFP+ Ports, quantity, maximum	24
1/2.5 GbE RJ45 Ports, quantity, maximum	36
1/2.5/5/10 GbE RJ45 Ports, quantity, maximum	12
40 GbE QSFP Ports, quantity, maximum	4
PoE Power Budget, maximum	2000 W
Switches per Stack, maximum	12
Aggregate Stack Bandwidth, maximum	2400 Gb/s
PoE/PoE+	Yes
Stacking	Yes
sFlow	Yes
Layer 3 (STATIC, RIP, OSPF)	Yes
OpenFlow with Hybrid Port Mode	Yes
Redundant Power Option	Yes
Hot Swap Internal Power Supplies & Fans	Yes
802.3bt2 (90 W PoE Power per Port)	Yes
VRF	Yes
EEE (Energy Efficient Ethernet)	Yes
MACsec	Yes
BGP	Yes
Reversible Airflow Option	Yes
VxLAN	Yes