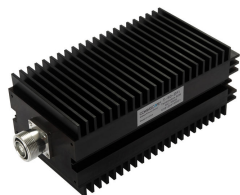


T-50-DFI

Termination Load, 0–3000 MHz



OBSOLETE

This product was discontinued on: February 28, 2015

Replaced By:

T-50-DFI6

Low PIM Termination 50 W Load, 555-2700 MHz

Product Classification

Regional Availability

Asia | Australia/New Zealand | EMEA | Latin America | North America

Product Type

Termination Load

General Specifications

Device Type

Termination Load

Application

Indoor/Outdoor

Color

Black

Inner Contact Plating

Silver

Interface

7-16 DIN Female

Outer Contact Plating

Trimetal

Dimensions

Height

87 mm | 3.425 in

Width

110 mm | 4.331 in

Length

240 mm | 9.449 in

Electrical Specifications

3rd Order IMD

-150 dBc

3rd Order IMD Test Method

Two +43 dBm carriers

T-50-DFI

Return Loss, minimum	19 dB
Average Power, maximum	50 W
Impedance	50 ohm
Operating Frequency Band	0 – 3000 MHz
VSWR	1.25

Environmental Specifications

Operating Temperature	-35 °C to +50 °C (-31 °F to +122 °F)
Relative Humidity	Up to 100%
Ingress Protection Test Method	IEC 60529:2001, IP65

Packaging and Weights

Height, packed	125 mm 4.921 in
Width, packed	185 mm 7.283 in
Length, packed	330 mm 12.992 in
Volume	763000 mm ³ 46.561 in ³
Weight, gross	3.76 kg 8.289 lb
Weight, net	2.83 kg 6.239 lb

Regulatory Compliance/Certifications

Agency	Classification
ISO 9001:2015	Designed, manufactured and/or distributed under this quality management system

