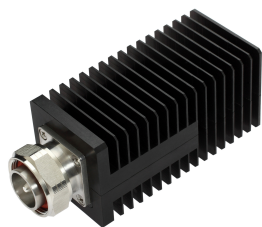


T-50-DM-S



Termination Load, 0–3000 MHz

OBSOLETE

This product was discontinued on: September 30, 2021

Product Classification

| | |
|------------------------------|---|
| Regional Availability | Asia Australia/New Zealand EMEA Latin America North America |
| Product Type | Termination Load |

General Specifications

| | |
|------------------------------|------------------|
| Device Type | Termination Load |
| Application | Indoor/Outdoor |
| Color | Black |
| Inner Contact Plating | Silver |
| Interface | 7-16 DIN Male |
| Outer Contact Plating | Trimetal |

Dimensions

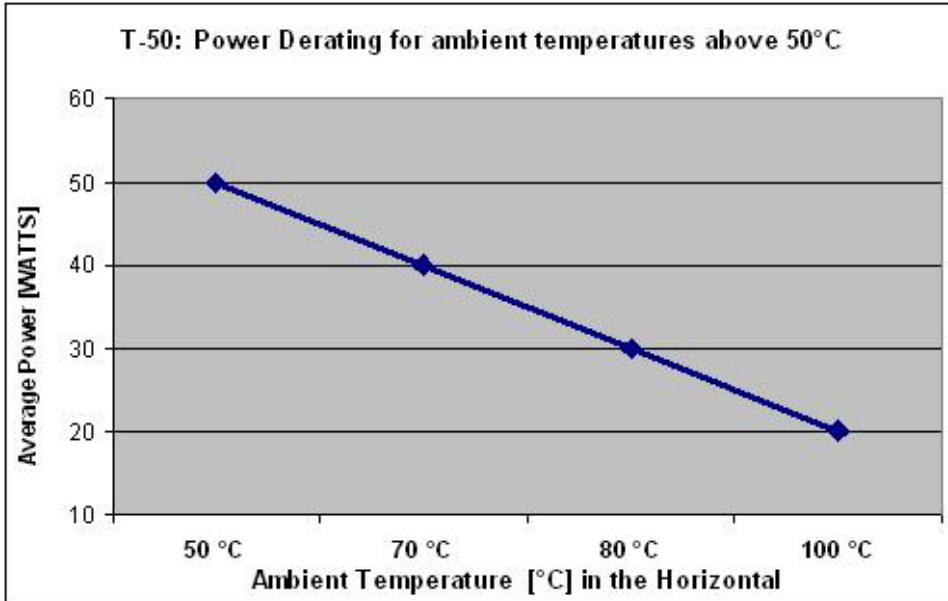
| | |
|---------------|-------------------|
| Height | 50 mm 1.969 in |
| Width | 50 mm 1.969 in |
| Length | 129 mm 5.079 in |

Electrical Specifications

| | |
|---------------------------------|--------------|
| Return Loss, minimum | 23 dB |
| Average Power, maximum | 50 W |
| Impedance | 50 ohm |
| Operating Frequency Band | 0 – 3000 MHz |
| VSWR | 1.15 |

T-50-DM-S

Derating Curve



Environmental Specifications

| | |
|---------------------------------------|--------------------------------------|
| Operating Temperature | -25 °C to +50 °C (-13 °F to +122 °F) |
| Relative Humidity | Up to 100% |
| Ingress Protection Test Method | IEC 60529:2001, IP65 |

Packaging and Weights

| | |
|-----------------------|---|
| Height, packed | 56 mm 2.205 in |
| Width, packed | 76 mm 2.992 in |
| Length, packed | 156 mm 6.142 in |
| Volume | 664 mm ³ 0.041 in ³ |
| Weight, gross | 0.48 kg 1.058 lb |
| Weight, net | 0.44 kg 0.97 lb |

Regulatory Compliance/Certifications

| Agency | Classification |
|---------------|--|
| CHINA-ROHS | Below maximum concentration value |
| ISO 9001:2015 | Designed, manufactured and/or distributed under this quality management system |
| REACH-SVHC | Compliant as per SVHC revision on www.commscope.com/ProductCompliance |

T-50-DM-S

ROHS

Compliant

UK-ROHS

Compliant

